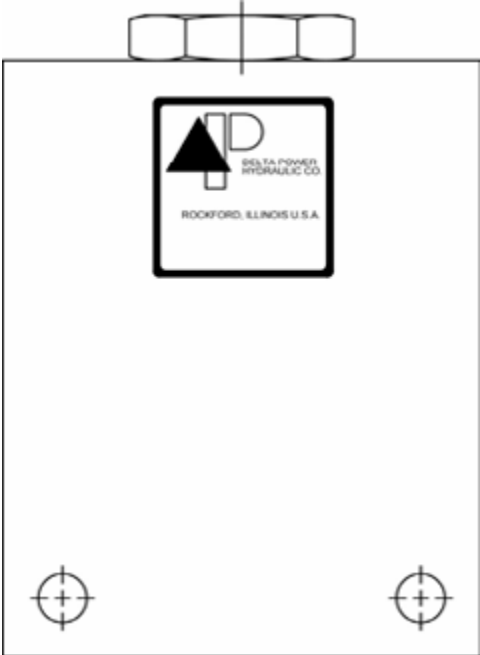


SINGLE, P.O. CHECK VALVES (PRE-ENGINEERED BLOCKS)



SERIES SINGLE PILOT OPERATED CHECK VALVE ..... HS3

W7 / 2017

**WARNING:** the specifications/application data shown in our catalogs and data sheets are intended only as a general guide for the product described (herein). Any specific application should not be undertaken without independent study, evaluation, and testing for suitability.



4484 Boeing Drive Rockford, IL 61109 • USA • Phone +1 (815) 397-6628 • Fax +1 (815) 397-2526  
 mail: delta@delta-power.com • [www.delta-power.com](http://www.delta-power.com)



Via Malavolti, 36 • 41122 Modena • ITALY • Phone +39 (059) 254895 • Fax +39 (059) 253512  
 mail: tecnord@tecnord.com • [www.tecnord.com](http://www.tecnord.com)

**WARNING:** *the specifications/application data shown in our catalogs and data sheets are intended only as a general guide for the product described (herein). Any specific application should not be undertaken without independent study, evaluation, and testing for suitability.*




4484 Boeing Drive Rockford, IL 61109 • USA • Phone +1 (815) 397-6628 • Fax +1 (815) 397-2526  
mail: [delta@delta-power.com](mailto:delta@delta-power.com) • [www.delta-power.com](http://www.delta-power.com)



Via Malavolti, 36 • 41122 Modena • ITALY • Phone +39 (059) 254895 • Fax +39 (059) 253512  
mail: [tecnord@tecnord.com](mailto:tecnord@tecnord.com) • [www.tecnord.com](http://www.tecnord.com)

**SERIES SINGLE PILOT OPERATED CHECK VALVE**

|   | GPM | PSI  | LPM | BAR | CAVITY    | MODEL         | PAGE |
|---|-----|------|-----|-----|-----------|---------------|------|
|  | 5   | 3000 | 19  | 207 | 5/8-18    | <b>MS-POC</b> | HS4  |
|   | 10  | 3500 | 38  | 241 | 3/4-16    | <b>PS-POC</b> | HS6  |
|   | 15  | 3500 | 57  | 241 | 7/8-14    | <b>DS-POC</b> | HS8  |
|   | 40  | 3500 | 151 | 241 | 1 5/16-12 | <b>SS-POC</b> | HS10 |

**TYPICAL SCHEMATIC**

Typical application for this valve is load holding when pump is off.

W7 / 2017

**WARNING:** the specifications/application data shown in our catalogs and data sheets are intended only as a general guide for the product described (herein). Any specific application should not be undertaken without independent study, evaluation, and testing for suitability.



4484 Boeing Drive Rockford, IL 61109 • USA • Phone +1 (815) 397-6628 • Fax +1 (815) 397-2526  
 mail: delta@delta-power.com • www.delta-power.com



Via Malavolti, 36 • 41122 Modena • ITALY • Phone +39 (059) 254895 • Fax +39 (059) 253512  
 mail: tecnord@tecnord.com • www.tecnord.com

**MS-POC SINGLE PILOT OPERATED CHECK VALVE**



**DESCRIPTION**

7 size, 5/8-18 thread, "Mini" series, pilot operated check valve.

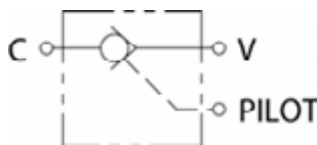
**OPERATION**

The MS-POC allows flow to pass from (V) to (C) and blocks flow from (C) to (V). When pilot pressure is applied to pilot port the valve allows flow from (C) to (V). The valve has a 6.7:1 pilot ratio, so at least .149 of the load pressure is required at the (PILOT) port to open the flow passage to allow flow from ports (C). The check is spring-biased at 50 PSI (3.4 bar) to assure holding in static or no-load conditions.

**FEATURES**

- Hardened internal parts for long life.
- Anodized aluminum body for corrosion protection.

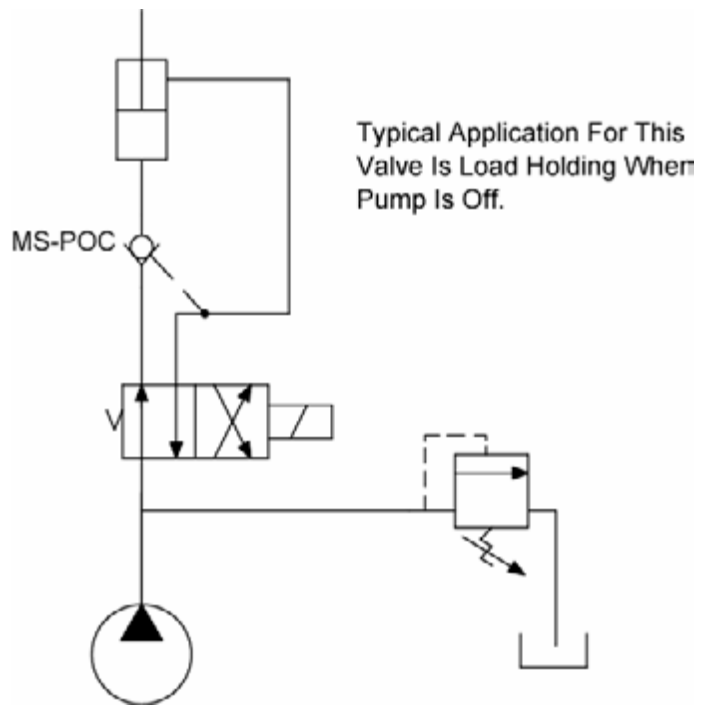
**HYDRAULIC SYMBOL**



**VALVE SPECIFICATIONS**

|                                    |                                 |
|------------------------------------|---------------------------------|
| Nominal Flow                       | 5 GPM (19 LPM)                  |
| Rated Operating Pressure           | 3000 PSI (207 bar)              |
| Typical Internal Leakage (150 SSU) | 0-5 drops/min                   |
| Viscosity Range                    | 36 to 3000 SSU (3 to 647 cSt)   |
| Filtration                         | 30 micron nominal               |
| Pilot Ratio                        | 6.7:1                           |
| Media Operating Temp. Range        | -40° to 250°F (-40° to 120°C)   |
| Weight                             | .7 lbs (.31 kg)                 |
| Operating Fluid Media              | General Purpose Hydraulic Fluid |
| Cartridge Torque Requirements      | 15 ft-lbs (20.3 Nm)             |
| Cartridge Crack Pressure           | 50 PSI (3.4 bar)                |

**TYPICAL SCHEMATIC**



**WARNING:** the specifications/application data shown in our catalogs and data sheets are intended only as a general guide for the product described (herein). Any specific application should not be undertaken without independent study, evaluation, and testing for suitability.

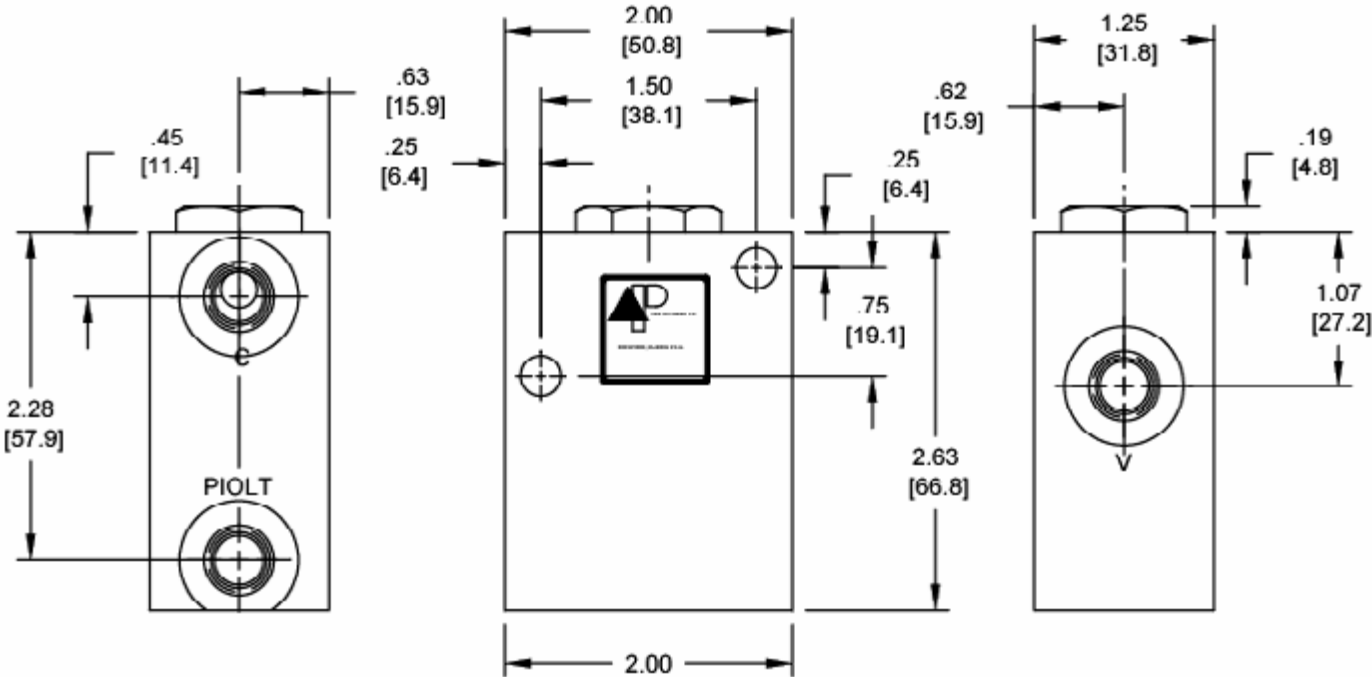


4484 Boeing Drive Rockford, IL 61109 • USA • Phone +1 (815) 397-6628 • Fax +1 (815) 397-2526  
 mail: delta@delta-power.com • www.delta-power.com



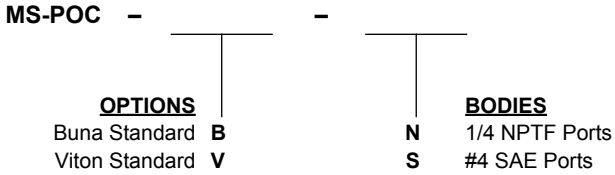
Via Malavolti, 36 • 41122 Modena • ITALY • Phone +39 (059) 254895 • Fax +39 (059) 253512  
 mail: tecnord@tecnord.com • www.tecnord.com

**DIMENSIONS**



SAE PORTS SHOWN  
 MTG. HOLES ARE .28 DIA.  
 O-RINGS ARE STANDARD ON PISTON ASSEMBLY  
 CHECK VALVE USED IS A MA-CVA

**ORDERING INFORMATION**



W7 / 2017

**WARNING:** the specifications/application data shown in our catalogs and data sheets are intended only as a general guide for the product described (herein). Any specific application should not be undertaken without independent study, evaluation, and testing for suitability.

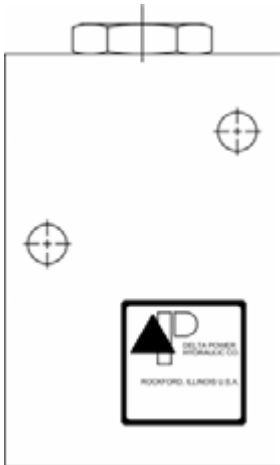


4484 Boeing Drive Rockford, IL 61109 • USA • Phone +1 (815) 397-6628 • Fax +1 (815) 397-2526  
 mail: delta@delta-power.com • www.delta-power.com



Via Malavolti, 36 • 41122 Modena • ITALY • Phone +39 (059) 254895 • Fax +39 (059) 253512  
 mail: tecnord@tecnord.com • www.tecnord.com

**PS-POC SINGLE PILOT OPERATED CHECK VALVE**



**DESCRIPTION**

8 size, 3/4-16 thread, "Power" series, pilot operated check valve.

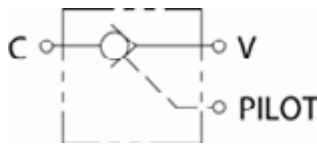
**OPERATION**

The PS-POC allows flow to pass from (V) to (C) and blocks flow from (C) to (V). When pilot pressure is applied to pilot port the valve allows flow from (C) to (V). The valve has a 4:1 pilot ratio, so at least .250 of the load pressure is required at the (PILOT) port to open the flow passage to allow flow from ports (C). The check is spring-biased at 50 PSI (3.4 bar) to assure holding in static or no-load conditions.

**FEATURES**

- Hardened internal parts for long life.
- Anodized aluminum body for corrosion protection.

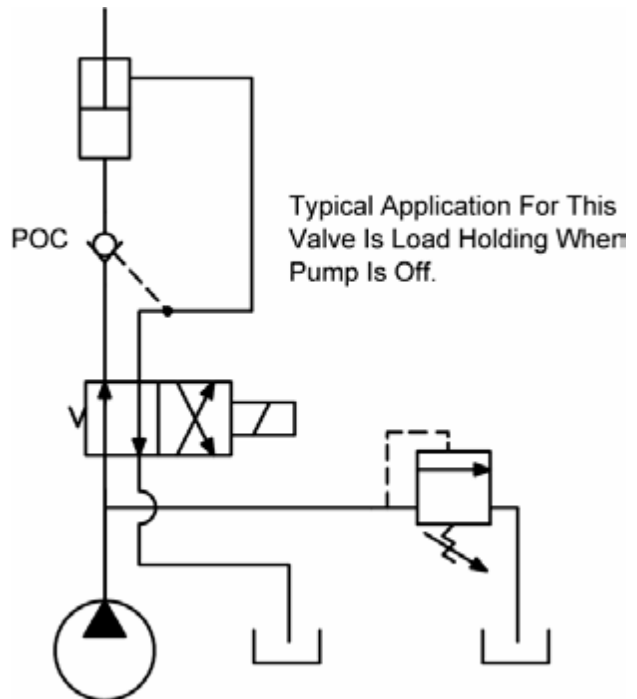
**HYDRAULIC SYMBOL**



**VALVE SPECIFICATIONS**

|                                    |                                 |
|------------------------------------|---------------------------------|
| Nominal Flow                       | 10 GPM (38 LPM)                 |
| Rated Operating Pressure           | 3500 PSI (241 bar)              |
| Typical Internal Leakage (150 SSU) | 0-5 drops/min                   |
| Viscosity Range                    | 36 to 3000 SSU (3 to 647 cSt)   |
| Filtration                         | 30 micron nominal               |
| Pilot Ratio                        | 4:1                             |
| Media Operating Temp. Range        | -40° to 250°F (-40° to 120°C)   |
| Weight                             | 1.0 lbs (.45 kg)                |
| Operating Fluid Media              | General Purpose Hydraulic Fluid |
| Cartridge Torque Requirements      | 25 ft-lbs (34 Nm)               |
| Cartridge Crack Pressure           | 50 PSI (3.4 bar)                |

**TYPICAL SCHEMATIC**



**WARNING:** the specifications/application data shown in our catalogs and data sheets are intended only as a general guide for the product described (herein). Any specific application should not be undertaken without independent study, evaluation, and testing for suitability.

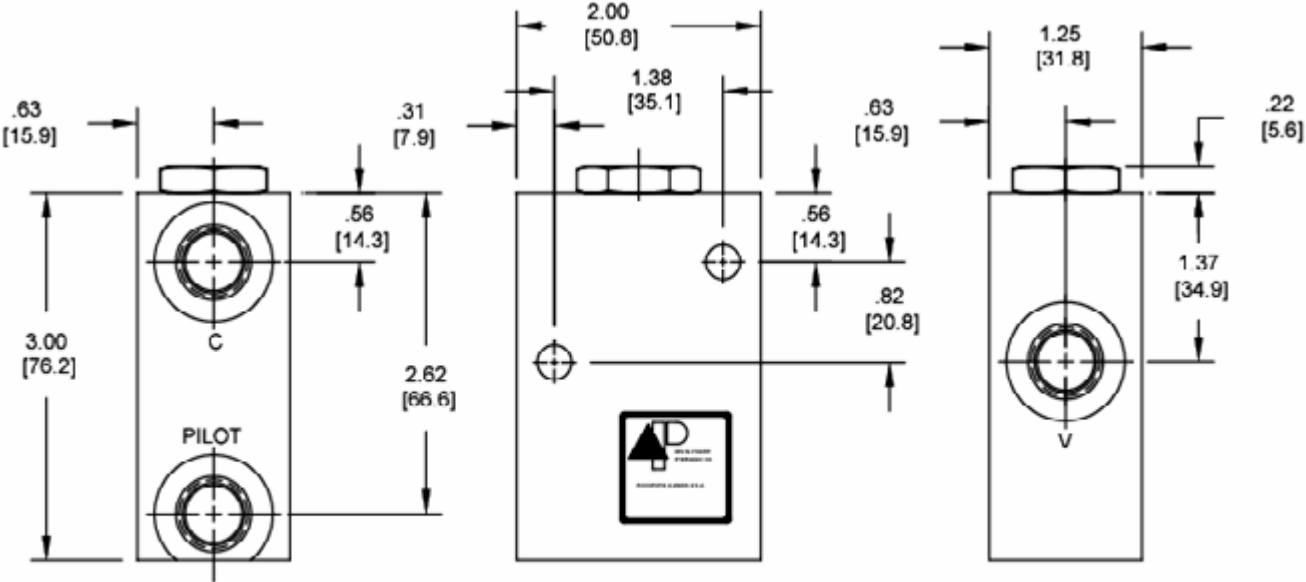


4484 Boeing Drive Rockford, IL 61109 • USA • Phone +1 (815) 397-6628 • Fax +1 (815) 397-2526  
 mail: delta@delta-power.com • www.delta-power.com



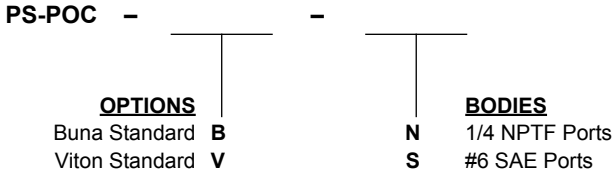
Via Malavolti, 36 • 41122 Modena • ITALY • Phone +39 (059) 254895 • Fax +39 (059) 253512  
 mail: tecnord@tecnord.com • www.tecnord.com

**DIMENSIONS**



SAE PORTS SHOWN  
 MTG. HOLES ARE .28 DIA.  
 O-RINGS ARE STANDARD ON PISTON ASSEMBLY  
 CHECK VALVE USED IS A PB-CVC

**ORDERING INFORMATION**



W7 / 2017

**WARNING:** the specifications/application data shown in our catalogs and data sheets are intended only as a general guide for the product described (herein). Any specific application should not be undertaken without independent study, evaluation, and testing for suitability.

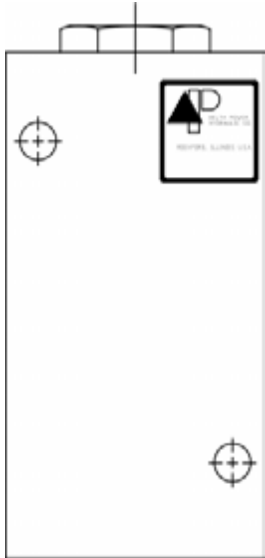


4484 Boeing Drive Rockford, IL 61109 • USA • Phone +1 (815) 397-6628 • Fax +1 (815) 397-2526  
 mail: delta@delta-power.com • www.delta-power.com



Via Malavolti, 36 • 41122 Modena • ITALY • Phone +39 (059) 254895 • Fax +39 (059) 253512  
 mail: tecnord@tecnord.com • www.tecnord.com

**DS-POC SINGLE PILOT OPERATED CHECK VALVE**



**DESCRIPTION**

10 size, 7/8-14 thread, "Delta" series, pilot operated check valve.

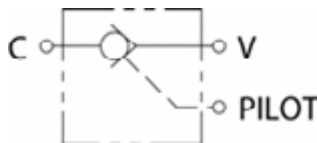
**OPERATION**

The DS-POC allows flow to pass from (V) to (C) and blocks flow from (C) to (V). When pilot pressure is applied to pilot port the valve allows flow from (C) to (V). The valve has a 4:1 pilot ratio, so at least .250 of the load pressure is required at the (PILOT) port to open the flow passage to allow flow from ports (C). The check is spring-biased at 90 PSI (6.2 bar) to assure holding in static or no-load conditions.

**FEATURES**

- Hardened internal parts for long life.
- Anodized aluminum body for corrosion protection.

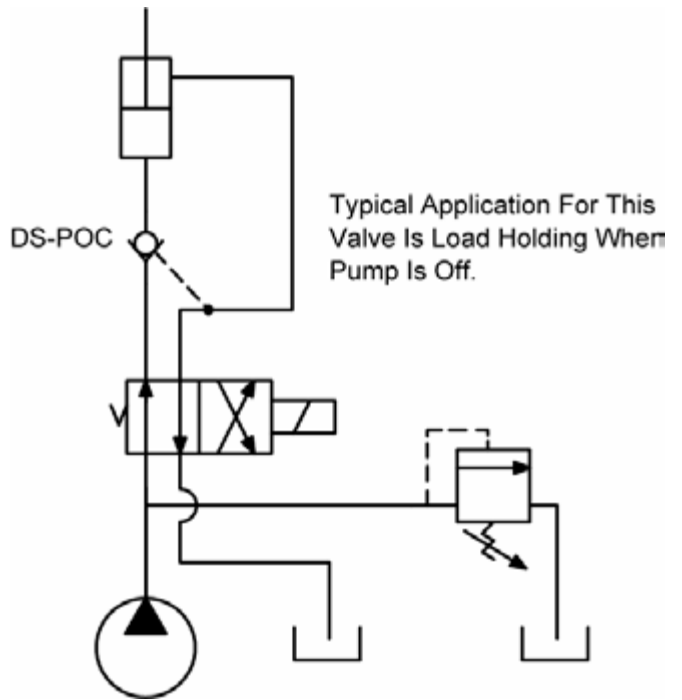
**HYDRAULIC SYMBOL**



**VALVE SPECIFICATIONS**

|                                    |                                 |
|------------------------------------|---------------------------------|
| Nominal Flow                       | 15 GPM (57 LPM)                 |
| Rated Operating Pressure           | 3500 PSI (241 bar)              |
| Typical Internal Leakage (150 SSU) | 0-5 drops/min                   |
| Viscosity Range                    | 36 to 3000 SSU (3 to 647 cSt)   |
| Filtration                         | 30 micron nominal               |
| Pilot Ratio                        | 4:1                             |
| Media Operating Temp. Range        | -40° to 250°F (-40° to 120°C)   |
| Weight                             | 1.1 lbs (.50 kg)                |
| Operating Fluid Media              | General Purpose Hydraulic Fluid |
| Cartridge Torque Requirements      | 30 ft-lbs (40.6 Nm)             |
| Cartridge Crack Pressure           | 90 PSI (6.2 bar)                |

**TYPICAL SCHEMATIC**



**WARNING:** the specifications/application data shown in our catalogs and data sheets are intended only as a general guide for the product described (herein). Any specific application should not be undertaken without independent study, evaluation, and testing for suitability.



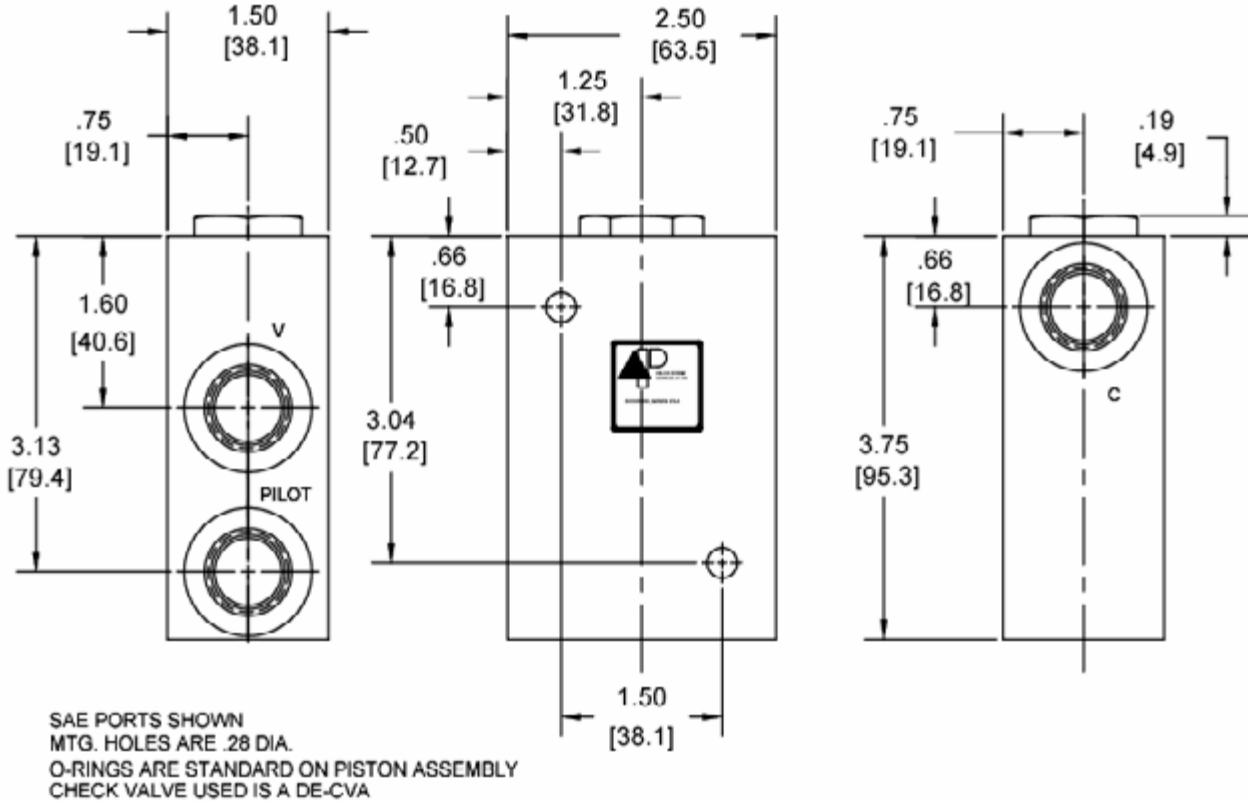
4484 Boeing Drive Rockford, IL 61109 • USA • Phone +1 (815) 397-6628 • Fax +1 (815) 397-2526  
 mail: delta@delta-power.com • www.delta-power.com



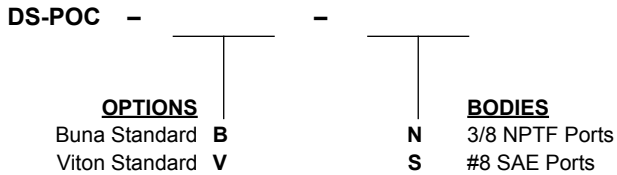
Via Malavolti, 36 • 41122 Modena • ITALY • Phone +39 (059) 254895 • Fax +39 (059) 253512  
 mail: tecnord@tecnord.com • www.tecnord.com



DIMENSIONS



ORDERING INFORMATION



W7 / 2017

**WARNING:** the specifications/application data shown in our catalogs and data sheets are intended only as a general guide for the product described (herein). Any specific application should not be undertaken without independent study, evaluation, and testing for suitability.



4484 Boeing Drive Rockford, IL 61109 • USA • Phone +1 (815) 397-6628 • Fax +1 (815) 397-2526  
 mail: delta@delta-power.com • www.delta-power.com



Via Malavolti, 36 • 41122 Modena • ITALY • Phone +39 (059) 254895 • Fax +39 (059) 253512  
 mail: tecnord@tecnord.com • www.tecnord.com

**SS-POC SINGLE PILOT OPERATED CHECK VALVE**



**DESCRIPTION**

16 size, 1 5/16-12 thread, "Super" series, pilot operated check valve.

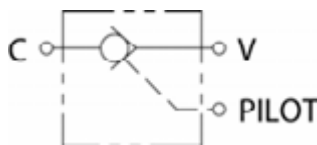
**OPERATION**

The SS-POC allows flow to pass from (V) to (C) and blocks flow from (C) to (V). When pilot pressure is applied to pilot port the valve allows flow from (C) to (V). The valve has a 3.7:1 pilot ratio, so at least .270 of the load pressure is required at the (PILOT) port to open the flow passage to allow flow from ports (C).

**FEATURES**

- Hardened internal parts for long life.
- Anodized aluminum body for corrosion protection.

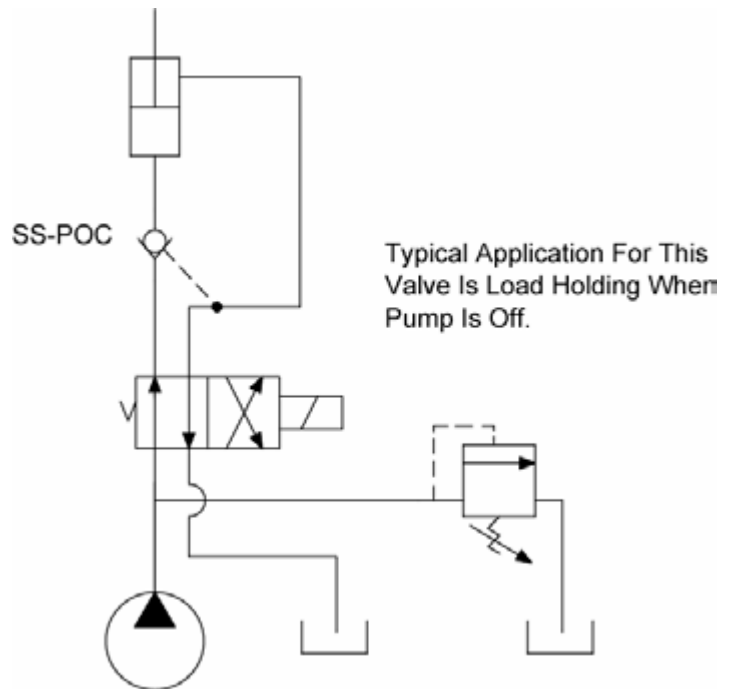
**HYDRAULIC SYMBOL**



**VALVE SPECIFICATIONS**

|                                    |                                 |
|------------------------------------|---------------------------------|
| Nominal Flow                       | 40 GPM (151 LPM)                |
| Rated Operating Pressure           | 3500 PSI (241 bar)              |
| Typical Internal Leakage (150 SSU) | 0-5 drops/min                   |
| Viscosity Range                    | 36 to 3000 SSU (3 to 647 cSt)   |
| Filtration                         | 30 micron nominal               |
| Pilot Ratio                        | 3.7:1                           |
| Media Operating Temp. Range        | -40° to 250°F (-40° to 120°C)   |
| Weight                             | 4.3 lbs (2.0 kg)                |
| Operating Fluid Media              | General Purpose Hydraulic Fluid |
| Cartridge Torque Requirements      | 90 ft-lbs (122 Nm)              |
| Cartridge Crack Pressure           | 50 PSI (3.4 bar)                |

**TYPICAL SCHEMATIC**



**WARNING:** the specifications/application data shown in our catalogs and data sheets are intended only as a general guide for the product described (herein). Any specific application should not be undertaken without independent study, evaluation, and testing for suitability.

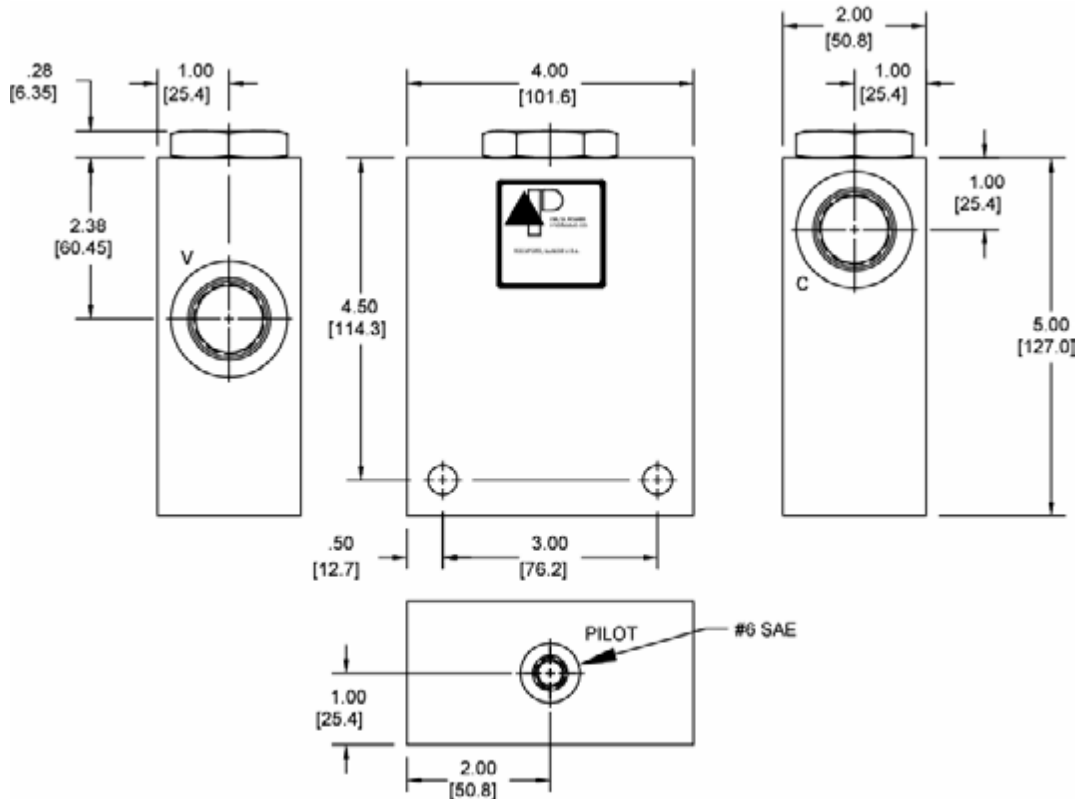


4484 Boeing Drive Rockford, IL 61109 • USA • Phone +1 (815) 397-6628 • Fax +1 (815) 397-2526  
 mail: delta@delta-power.com • www.delta-power.com



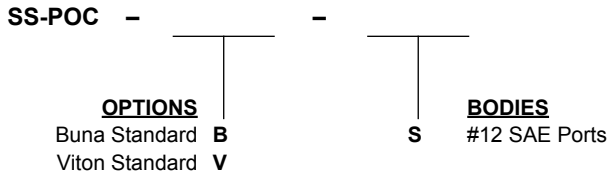
Via Malavolti, 36 • 41122 Modena • ITALY • Phone +39 (059) 254895 • Fax +39 (059) 253512  
 mail: tecnord@tecnord.com • www.tecnord.com

DIMENSIONS



SAE PORTS SHOWN  
 MTG. HOLES ARE .41 DIA.  
 O-RINGS ARE STANDARD ON PISTON ASSEMBLY  
 CHECK VALVE USED IS A SJ-CVA

ORDERING INFORMATION



W7 / 2017

**WARNING:** the specifications/application data shown in our catalogs and data sheets are intended only as a general guide for the product described (herein). Any specific application should not be undertaken without independent study, evaluation, and testing for suitability.



4484 Boeing Drive Rockford, IL 61109 • USA • Phone +1 (815) 397-6628 • Fax +1 (815) 397-2526  
 mail: delta@delta-power.com • www.delta-power.com



Via Malavolti, 36 • 41122 Modena • ITALY • Phone +39 (059) 254895 • Fax +39 (059) 253512  
 mail: tecnord@tecnord.com • www.tecnord.com