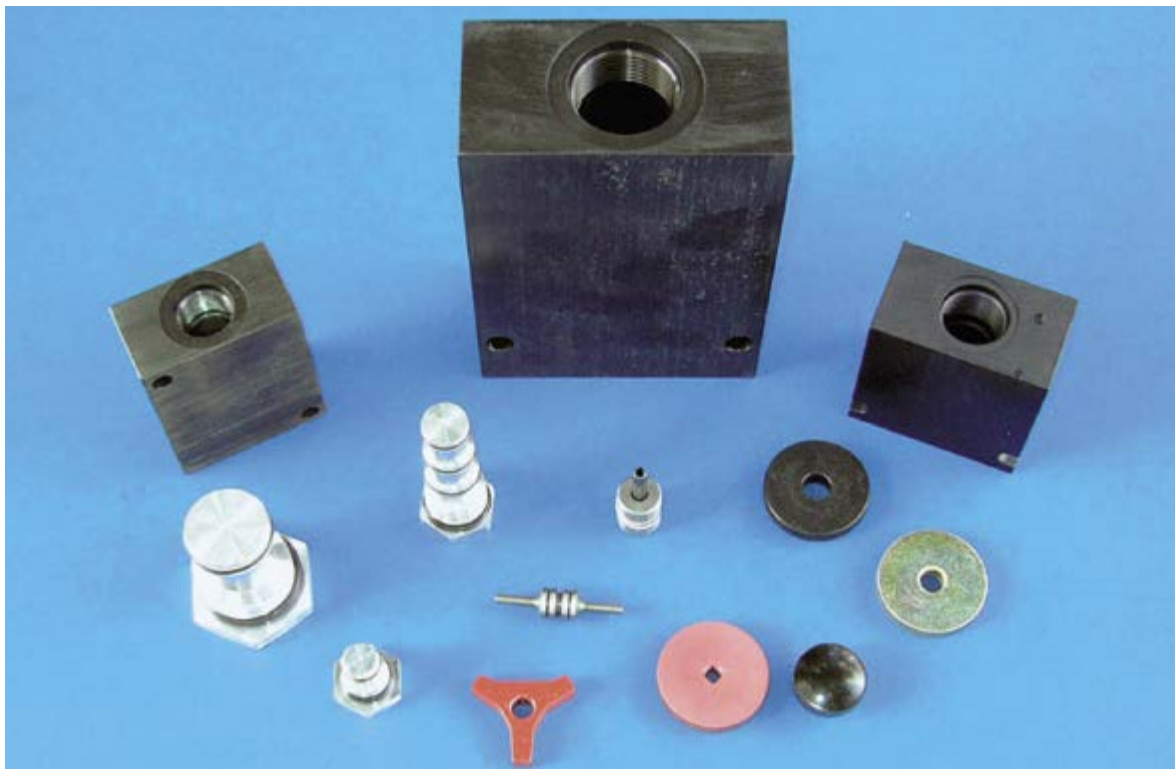


ACCESSORIES



| Section / Description | page |
|--------------------------------------|------|
| VALVE BODIES | AC2 |
| CAVITY PLUGS | AC6 |
| PILOT PISTON ASSEMBLIES | AC11 |
| MANUAL OVERRIDE OPTIONS | AC12 |

WARNING: the specifications/application data shown in our catalogs and data sheets are intended only as a general guide for the product described (herein). Any specific application should not be undertaken without independent study, evaluation, and testing for suitability.

VALVE BODIES - TECNORD

STANDARD BODIES (ALUMINIUM)

| | PORT SIZE | P/N | STYLE / SIZE | DIMENSIONS | | | | | |
|--|-----------|-------------|-----------------|------------|----|-----|----|-----|----|
| | | | | A | B | C | D | E | F |
| | 1/4 BSP | 13.1011.001 | 2W-5/8 | 30 | 50 | 50 | 25 | 42 | 34 |
| | #6SAE | 13.1011.141 | 2W-5/8 | 30 | 50 | 50 | 25 | 42 | 34 |
| | 1/4 BSP | 13.1011.002 | 3W-5/8 | 30 | 50 | 60 | 25 | 52 | 34 |
| | #6SAE | 13.1011.142 | 3W-5/8 | 30 | 50 | 60 | 25 | 52 | 34 |
| | 1/4 BSP | 13.1011.003 | 4W-5/8 | 30 | 60 | 70 | 30 | 62 | 44 |
| | #6SAE | 13.1011.143 | 4W-5/8 | 30 | 60 | 70 | 30 | 62 | 44 |
| | 1/4 BSP | 13.1011.124 | 2W-3/4 | 30 | 50 | 50 | 23 | 42 | 34 |
| | 3/8 BSP | 13.1011.125 | 2W-3/4 | 30 | 50 | 50 | 23 | 42 | 34 |
| | #6 SAE | 13.1011.144 | 2W-3/4 | 30 | 50 | 50 | 23 | 42 | 34 |
| | 1/4 BSP | 13.1011.126 | 3W-3/4 | 30 | 60 | 70 | 30 | 52 | 44 |
| | 3/8 BSP | 13.1011.127 | 3W-3/4 | 30 | 60 | 70 | 30 | 52 | 44 |
| | #6 SAE | 13.1011.145 | 3W-3/4 | 30 | 60 | 70 | 30 | 52 | 44 |
| | 1/4 BSP | 13.1011.128 | 4W-3/4 | 30 | 60 | 80 | 30 | 72 | 44 |
| | 3/8 BSP | 13.1011.129 | 4W-3/4 | 30 | 60 | 80 | 30 | 72 | 44 |
| | #6 SAE | 13.1011.146 | 4W-3/4 | 30 | 60 | 80 | 30 | 72 | 44 |
| | 3/8 BSP | 13.1011.116 | 2W-7/8 | 30 | 60 | 60 | 25 | 52 | 44 |
| | 1/2 BSP | 13.1011.115 | 2W-7/8 | 30 | 60 | 60 | 25 | 52 | 44 |
| | #8 SAE | 13.1011.147 | 2W-7/8 | 30 | 60 | 60 | 25 | 52 | 44 |
| | 3/8 BSP | 13.1011.118 | 3W-7/8 | 30 | 60 | 70 | 30 | 62 | 44 |
| | #6 SAE | 13.1011.148 | 3W-7/8 | 30 | 60 | 70 | 30 | 62 | 44 |
| | 3/8 BSP | 13.1011.121 | 4W-7/8 | 30 | 60 | 85 | 30 | 77 | 44 |
| | #6 SAE | 13.1011.149 | 4W-7/8 | 30 | 60 | 85 | 30 | 77 | 44 |
| | 3/4 BSP | 13.1011.312 | 2W-1 1/16 | 50 | 80 | 80 | 40 | 70 | 60 |
| | #12 SAE | 13.1011.138 | 2W-1 1/16 | 50 | 80 | 80 | 40 | 70 | 60 |
| | 3/4 BSP | 13.1011.131 | 3W-1 1/16 | 50 | 80 | 100 | 40 | 80 | 60 |
| | #12 SAE | 13.1011.139 | 3W-1 1/16 | 50 | 80 | 100 | 40 | 80 | 60 |
| | 1/2 BSP | 13.1011.132 | 4W-1 1/16 | 50 | 80 | 125 | 40 | 100 | 50 |
| | #10 SAE | 13.1011.140 | 4W-1 1/16 | 50 | 80 | 125 | 40 | 100 | 50 |
| | 3/4 BSP | 13.1011.008 | 2W-1 5/16 | 50 | 80 | 80 | 34 | 60 | 60 |
| | #12 SAE | 13.1011.137 | 2W-1 5/16 | 50 | 80 | 80 | 34 | 60 | 60 |
| | 3/4 BSP | 13.1011.153 | 3W-1 5/16 | 50 | 80 | 100 | 40 | 80 | 60 |
| | 3/4 BSP | 13.1011.155 | 3W-1 5/16 SHORT | 50 | 90 | 85 | 45 | 65 | 70 |
| | #12 SAE | 13.1011.154 | 3W-1 5/16 | 50 | 80 | 100 | 40 | 80 | 60 |

The following bodies are for the slip-in style cartridges. Contact factory for price and availability

| | | | | | | | | | |
|--|---------|---------------|---------------|----|----|----|----|----|----|
| | 3/8 BSP | 13.1011.042/A | 3W-cavity 042 | 30 | 70 | 80 | 35 | 72 | 54 |
| | 1/4 BSP | 13.1011.086 | 3W-cavity 043 | 40 | 60 | 50 | 30 | 40 | 40 |
| | 3/8 BSP | 13.1011.133 | 3W-cavity 057 | 50 | 60 | 70 | 30 | 62 | 44 |
| | #6 SAE | 13.1011.136 | 3W-cavity 057 | 50 | 60 | 70 | 30 | 62 | 44 |
| | 3/8 BSP | 13.1011.134 | 4W-cavity 058 | 50 | 60 | 85 | 30 | 77 | 44 |
| | #6 SAE | 13.1011.135 | 4W-cavity 058 | 50 | 60 | 85 | 30 | 77 | 44 |
| | #8 SAE | 13.1011.191 | 3W-cavity 059 | 50 | 90 | 80 | 45 | 73 | 76 |
| | 1/4 BSP | 13.1011.080 | 3W-cavity 059 | 50 | 90 | 80 | 30 | 73 | 76 |

WARNING: the specifications/application data shown in our catalogs and data sheets are intended only as a general guide for the product described (herein). Any specific application should not be undertaken without independent study, evaluation, and testing for suitability.

Via Malavolti, 36 - 41122 Modena - ITALY - Phone +39 (059) 254895 - Fax +39 (059) 253512 - mail: tecnord@tecnord.com - www.tecnord.com

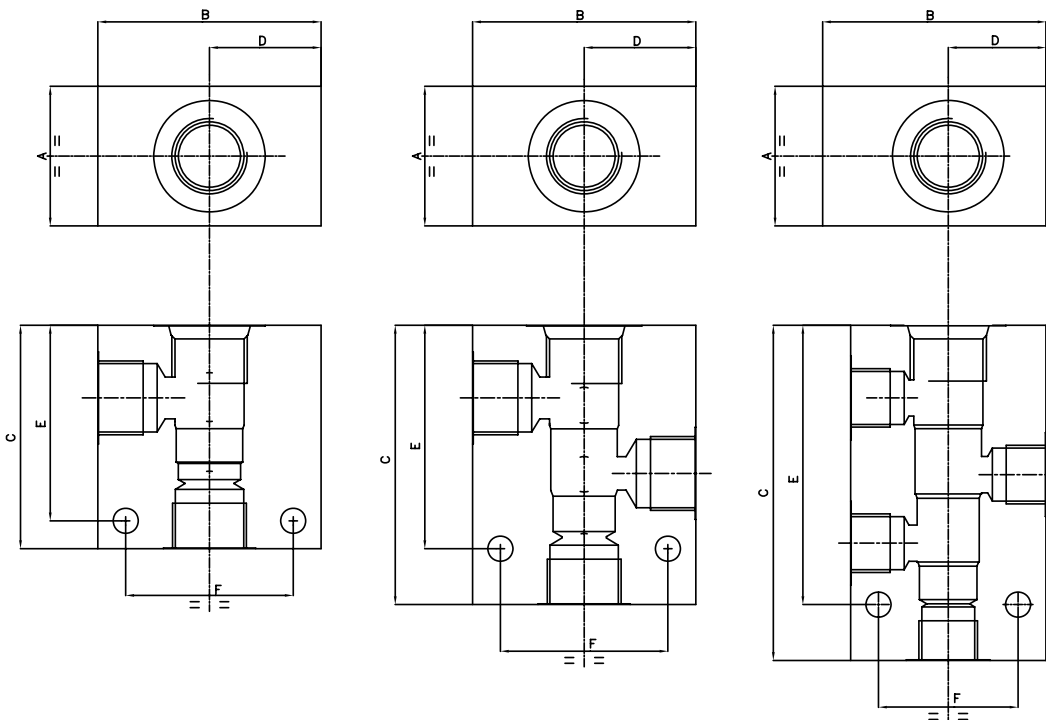
VALVE BODIES - TECNORD

2 ways

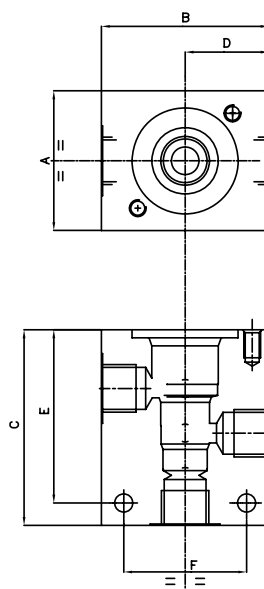
3 ways

4 ways

Standard



Special
(for slip-in style cartridges)



STANDARD BODIES - DELTA

| BODY | PORT SIZE | P/N | STYLE / SIZE | DIMENSIONS | | | | | |
|------|-----------|----------|-----------------|------------|------|-------|-------|-------|-------|
| | | | | A | B | C | D | E | F |
| AN | 1/4 NPT | 30102126 | 2W-5/8 | 1.25 | 2.25 | 1.75 | 1.13 | 1.00 | 1.50 |
| AS | #6 SAE | 30102346 | 2W-5/8 | 1.25 | 2.25 | 1.75 | 1.13 | 1.00 | 1.50 |
| CN | 1/4 NPT | 30102097 | 3W-5/8 | 1.25 | 2.0 | 2.25 | 1.0 | 1.875 | 1.5 |
| CS | #6SAE | 30102373 | 3W-5/8 | 1.25 | 2.5 | 2.25 | 1.25 | 1.875 | 2.0 |
| DN | 1/4 NPT | 30102110 | 4W-5/8 | 1.25 | 2.0 | 2.75 | 1.0 | 2.375 | 1.5 |
| DS | #6SAE | 30102288 | 4W-5/8 | 1.25 | 2.0 | 2.75 | 1.125 | 2.375 | 1.5 |
| BN | 1/4 NPT | 30102127 | 2W-3/4 | 1.25 | 2.0 | 2.0 | 1.00 | 1.50 | 1.50 |
| BS | #6SAE | 30102466 | 2W-3/4 | 1.25 | 2.0 | 2.0 | 1.125 | 1.50 | 1.50 |
| PN | 1/4 NPT | 30102534 | 3W-3/4 | 1.25 | 2.25 | 2.5 | 1.125 | 2.0 | 1.75 |
| PS | #6SAE | 30102533 | 3W-3/4 | 1.25 | 2.25 | 2.5 | 1.125 | 2.0 | 1.75 |
| QN | 1/4 NPT | 30102536 | 4W-3/4 | 1.25 | 2.25 | 3.0 | 1.125 | 2.50 | 1.75 |
| QS | #6SAE | 30102535 | 4W-3/4 | 1.25 | 2.25 | 3.0 | 1.125 | 2.50 | 1.75 |
| EN | 3/8 NPT | 30102006 | 2W-7/8 | 1.5 | 2.0 | 2.125 | 1.00 | 1.625 | 1.50 |
| ES | #8 SAE | 30102359 | 2W-7/8 | 1.5 | 2.0 | 2.0 | 1.25 | 1.50 | 1.75 |
| FN | 1/4 NPT | 30102015 | 3W-7/8 | 1.5 | 2.0 | 2.5 | 1.0 | 1.50 | 1.50 |
| FS | #6SAE | 30102360 | 3W-7/8 | 1.5 | 2.5 | 2.5 | 1.25 | 2.125 | 2.25 |
| GN | 1/4 NPT | 30102014 | 4W-7/8 | 1.5 | 2.0 | 3.25 | 1.0 | 2.125 | 1.50 |
| GS | #6SAE | 30102367 | 4W-7/8 | 1.5 | 2.5 | 3.25 | 1.25 | 2.875 | 2.25 |
| TS | #12 SAE | 30102813 | 2W-1 1/16 | 1.75 | 2.75 | 3.09 | 1.69 | 0.84 | 2.20 |
| US | #10 SAE | 30102815 | 3W-1 1/16 | 1.75 | 3.00 | 3.87 | 1.50 | 2.00 | 2.30 |
| RS | #10 SAE | 30102638 | SHORT 3W-1 1/16 | 2.0 | 3.00 | 3.25 | 1.50 | 2.70 | 2.38 |
| VS | #10 SAE | 30102816 | 4W-1 1/16 | 1.75 | 3.00 | 4.75 | 1.50 | 3.00 | 2.30 |
| JN | 3/4 NPT | 30102334 | 2W-1 5/16 | 2.0 | 3.0 | 3.0 | 1.875 | 2.25 | 2.438 |
| JS | #12 SAE | 30102331 | 2W-1 5/16 | 2.0 | 3.0 | 3.0 | 1.875 | 2.25 | 2.438 |
| KS | #12 SAE | 30102576 | 3W-1 5/16 | 2.0 | 4.0 | 4.0 | 2.0 | 3.125 | 3.38 |
| LS | #12 SAE | 30102575 | SHORT 3W-1 5/16 | 2.0 | 3.5 | 3.5 | 1.875 | 2.75 | 2.88 |
| NS | #12 SAE | 30102577 | 4W-1 5/16 | 2.0 | 4.0 | 5.25 | 2.0 | 4.25 | 3.38 |
| OS | #12 SAE | 30102589 | 5W-1 5/16 | 2.0 | 4.0 | 5.75 | 2.0 | 4.75 | 3.38 |

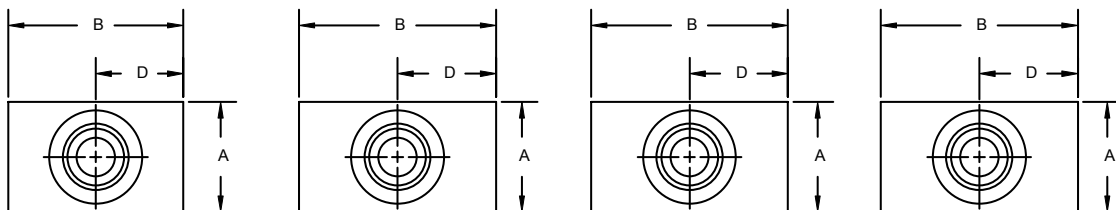
The following bodies are non-standard port sizes, contact factory for price and availability

| | | | | | | | | | |
|------|---------|----------|-----------|-----|------|------|-------|-------|-------|
| E1/2 | 1/2 NPT | 30102336 | 2W-7/8 | 1.5 | 2.5 | 2.5 | 1.50 | 2.0 | 2.0 |
| E#6 | #6 SAE | 30102364 | 2W-7/8 | 1.5 | 2.0 | 2.0 | 1.25 | 1.50 | 1.75 |
| F3/8 | 3/8 NPT | 30102370 | 3W-7/8 | 1.5 | 2.0 | 2.5 | 1.25 | 2.125 | 2.25 |
| F#8 | #8 SAE | 30102354 | 3W-7/8 | 1.5 | 2.50 | 2.75 | 1.25 | 2.125 | 2.00 |
| G#8 | #8 SAE | 30102362 | 4W-7/8 | 1.5 | 2.5 | 3.25 | 1.25 | 2.875 | 2.25 |
| J16 | #16 SAE | 30102333 | 2W-1 5/16 | 2.0 | 3.0 | 3.0 | 1.875 | 2.25 | 2.438 |

WARNING: the specifications/application data shown in our catalogs and data sheets are intended only as a general guide for the product described (herein). Any specific application should not be undertaken without independent study, evaluation, and testing for suitability.

Via Malavolti, 36 - 41122 Modena - ITALY - Phone +39 (059) 254895 - Fax +39 (059) 253512 - mail: tecnord@tecnord.com - www.tecnord.com

STANDARD BODIES

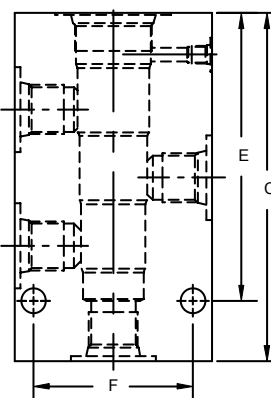
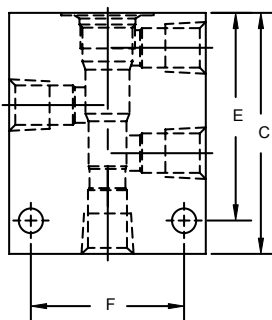
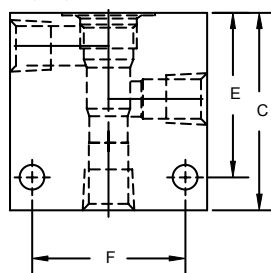
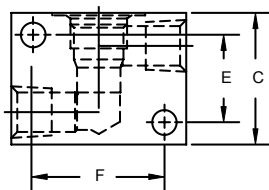


AN, AS, BN, BS

LS, RS
CN, CS, KS

DN - DS - NS

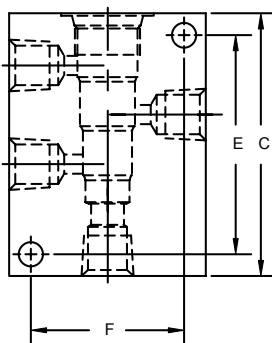
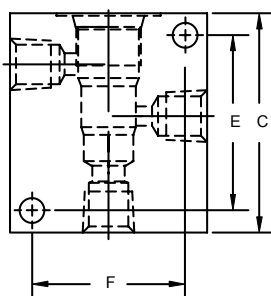
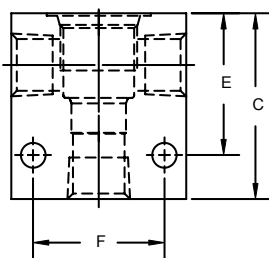
OS



EN

PN, PS, FN, US

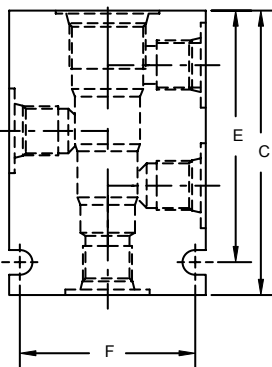
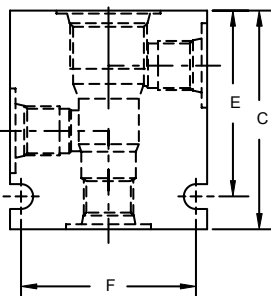
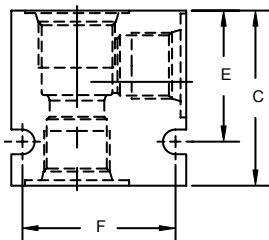
QN, QS, GN, VS



ES, JN, JS, TS

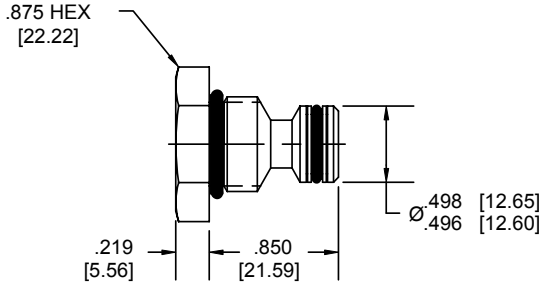
FS

GS

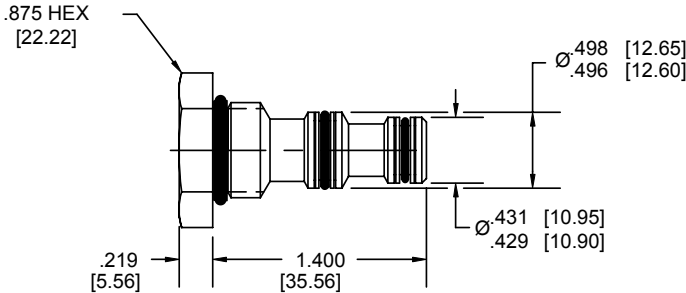


MINI SERIES CAVITY PLUGS

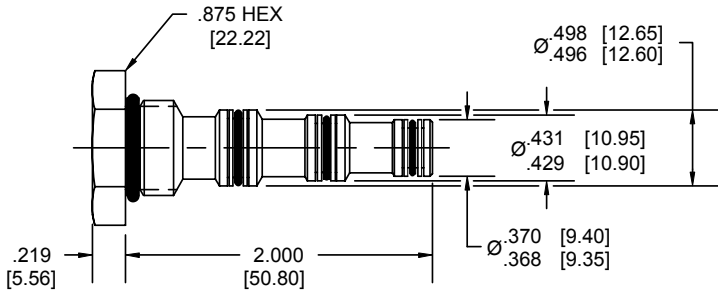
NOTE: dimensions in brackets are millimeters



2W 2P CAVITY PLUG
MA SERIES



3W 2P CAVITY PLUG
MC SERIES



4W 2P CAVITY PLUG
MD SERIES

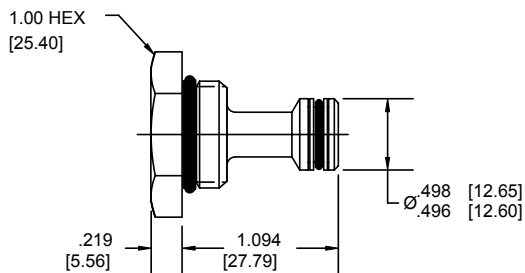
ORDERING INFORMATION

| | | | |
|------------------------------|-----------|-----------|----------------|
| Standard Model Number | - | - | |
| 2 Way | MA | 00 | Options |
| 3 Way | MC | V0 | Standard Buna |
| 4 Way | MD | | Standard Viton |

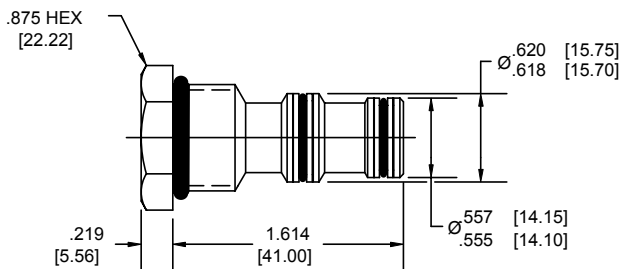
WARNING: the specifications/application data shown in our catalogs and data sheets are intended only as a general guide for the product described (herein). Any specific application should not be undertaken without independent study, evaluation, and testing for suitability.

POWER SERIES CAVITY PLUGS

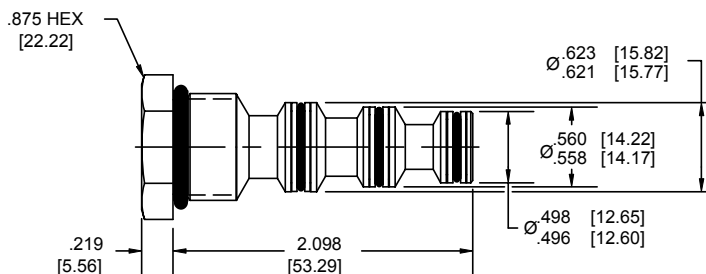
NOTE: dimensions in brackets are millimeters



2W 2P CAVITY PLUG
PB SERIES



3W 2P CAVITY PLUG
PP SERIES



4W 2P CAVITY PLUG
PQ SERIES

ORDERING INFORMATION

Standard Model Number

2 Way
3 Way
4 Way

PB
PP
PQ

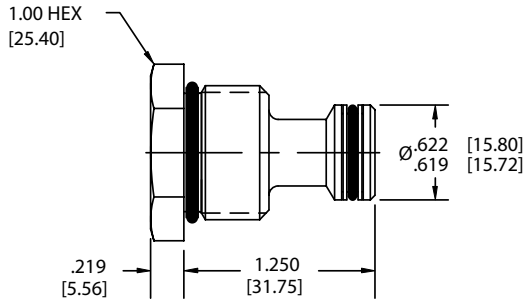
00
V0

Options

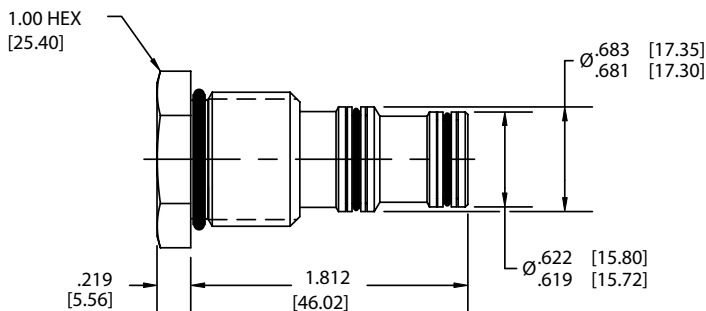
Standard Buna
Standard Viton

DELTA SERIES CAVITY PLUGS

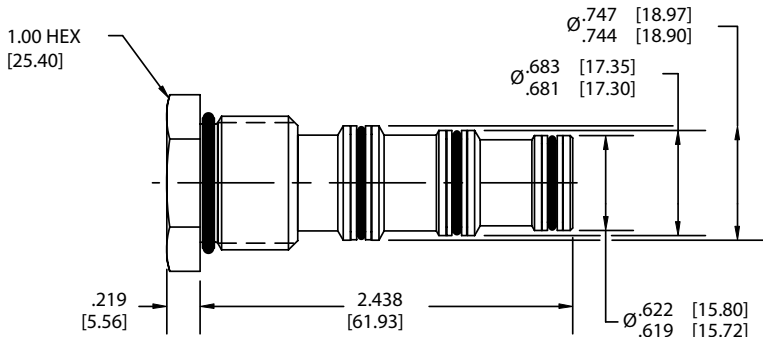
NOTE: dimensions in brackets are millimeters



2W 2P CAVITY PLUG
DE SERIES



3W 2P CAVITY PLUG
DF SERIES



4W 2P CAVITY PLUG
DG SERIES

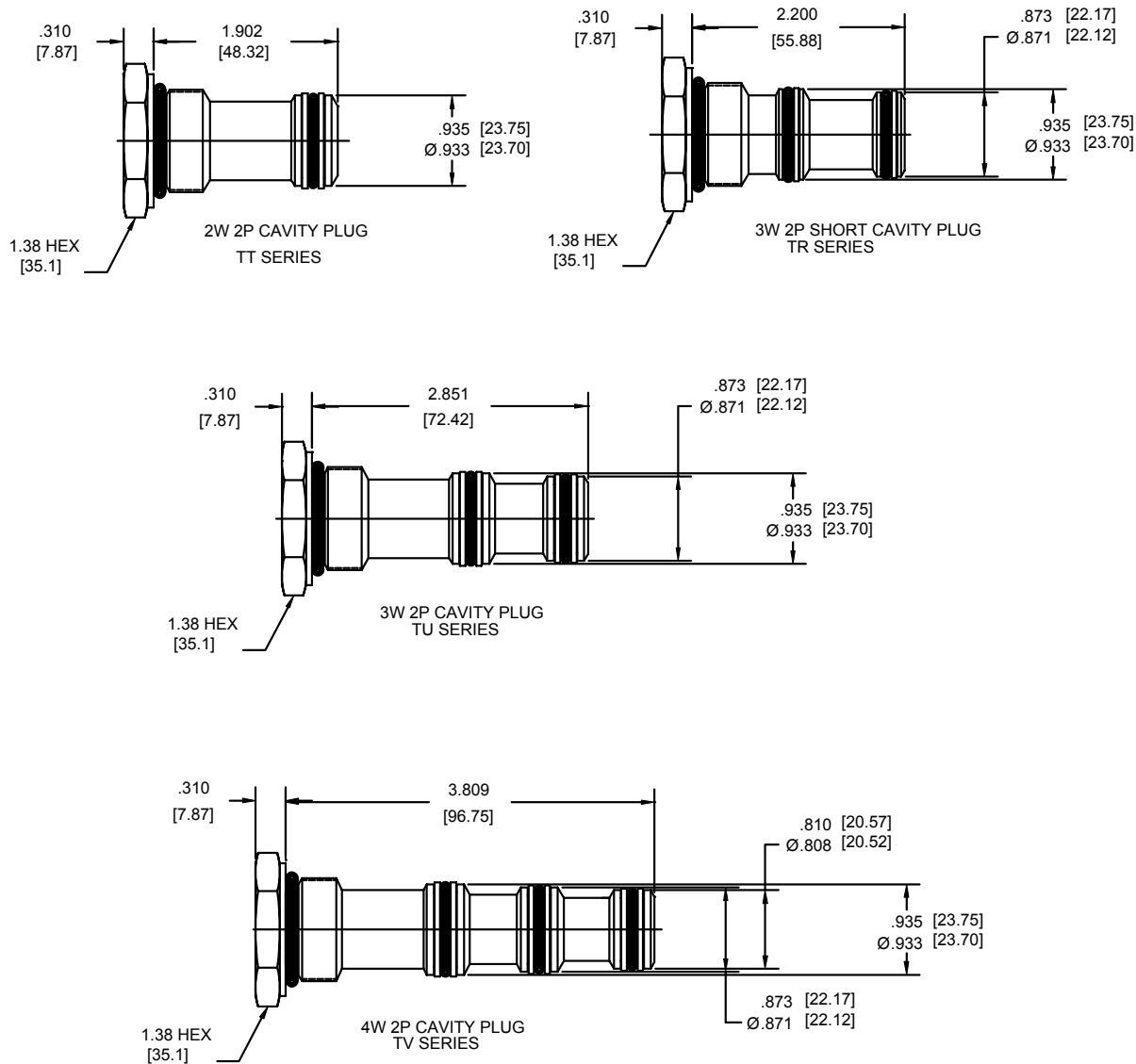
ORDERING INFORMATION

| | | | |
|------------------------------|----|----|----------------|
| Standard Model Number | - | - | |
| 2 Way | DE | 00 | Options |
| 3 Way | DF | V0 | Standard Buna |
| 4 Way | DG | | Standard Viton |

WARNING: the specifications/application data shown in our catalogs and data sheets are intended only as a general guide for the product described (herein). Any specific application should not be undertaken without independent study, evaluation, and testing for suitability.

TECNORD SERIES CAVITY PLUGS

NOTE: dimensions in brackets are millimeters



ORDERING INFORMATION

Standard Model Number

2 Way
3 Way
3 Way Short
4 Way

TT
TU
TR
TV

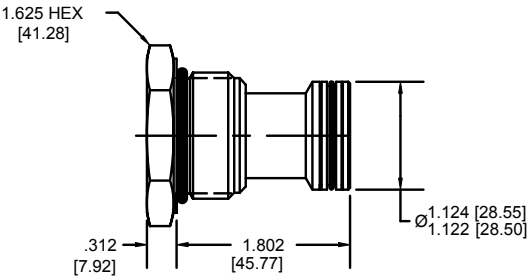
00
V0

Options

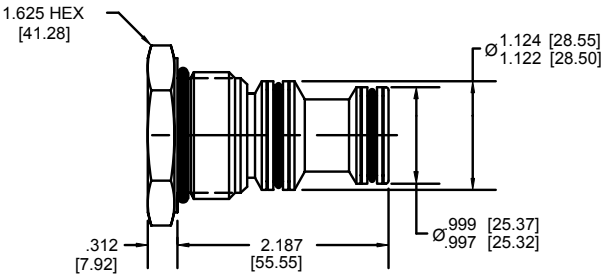
Standard Buna
Standard Viton

SUPER SERIES CAVITY PLUGS

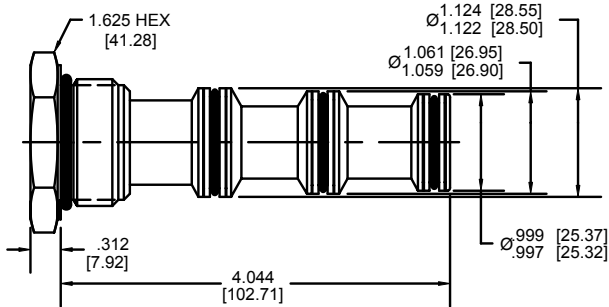
NOTE: dimensions in brackets are millimeters



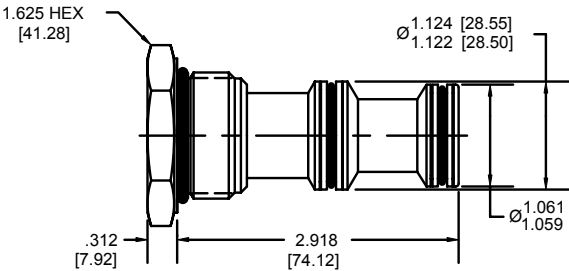
2W 2P CAVITY PLUG
SJ SERIES



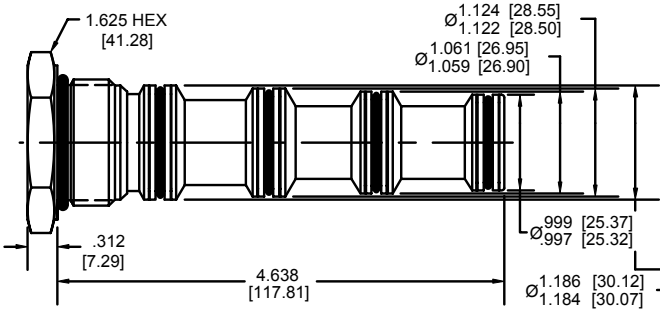
3W 2P SHORT CAVITY PLUG
SL SERIES



4W 2P CAVITY PLUG
SM SERIES



3W 2P CAVITY PLUG
SK SERIES



5W 2P SHORT CAVITY PLUG
SO SERIES

ORDERING INFORMATION

| Standard Model Number | | | Options |
|-----------------------|-----------|-----------|----------------|
| 2 Way | SJ | 00 | Standard Buna |
| 3 Way Short | SL | V0 | Standard Viton |
| 3 Way | SK | | |
| 4 Way | SM | | |
| 5 Way Short | SO | | |

WARNING: the specifications/application data shown in our catalogs and data sheets are intended only as a general guide for the product described (herein). Any specific application should not be undertaken without independent study, evaluation, and testing for suitability.

Via Malavolti, 36 - 41122 Modena - ITALY - Phone +39 (059) 254895 - Fax +39 (059) 253512 - mail: tecnord@tecnord.com - www.tecnord.com

PILOT PISTON ASSEMBLIES

DESCRIPTION

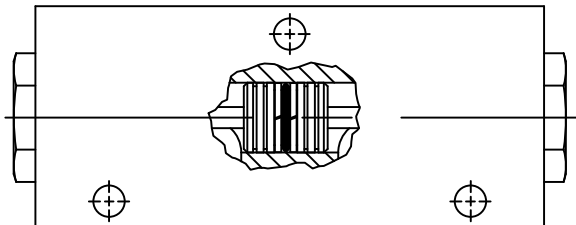
These pistons are used in a manifold to create pilot operated valve assemblies, such as pilot operated checks.

FEATURES

- O-rings on piston are optional.
- One piece design or pressed fit dowel pins
- Single or double pilot piston options.

PISTON SPECIFICATIONS

| VALVE SERIES | SEAT DIAMETER | PILOT RATIO |
|--------------|---------------|-------------|
| MINI | .193 | 6.7:1 |
| POWER | .250 | 4:1 |
| DELTA | .312 | 4:1 |
| SUPER | .590 | 3.7:1 |



| | |
|----------------------------|----------------------------|
| <p>MINI SERIES</p> | <p>POWER SERIES</p> |
| <p>DELTA SERIES</p> | <p>SUPER SERIES</p> |

| CAVITY INFORMATION | SERIES | BORE DIAMETER | DOUBLE - SPOTFACE DIM. | SINGLE - SPOTFACE DIM. |
|--------------------|--------|---------------|------------------------|------------------------|
| | | A | B | C |
| | MINI | .500/.502 | 3.313 | 2.031 |
| | POWER | .500/.502 | 4.250 | 2.406 |
| | DELTA | .625/.627 | 4.500 | 2.750 |
| | SUPER | 1.126/1.128 | 6.938 | 4.000 |

ORDERING INFORMATION

| PISTON | | SEALS | | PILOT PIN OPTIONS | |
|-----------------------|---|---------|----------|-------------------|--|
| MINI Series .500 DIA | M | B Buna | S Single | | |
| POWER Series .500 DIA | P | V Viton | D Double | | |
| DELTA Series .625 DIA | D | O Omit | | | |
| SUPER Series 1.12 DIA | S | | | | |

MANUAL OVERRIDE OPTIONS - SOLENOID OPERATED VALVES

PULL TYPE MANUAL OVERRIDE OPTION

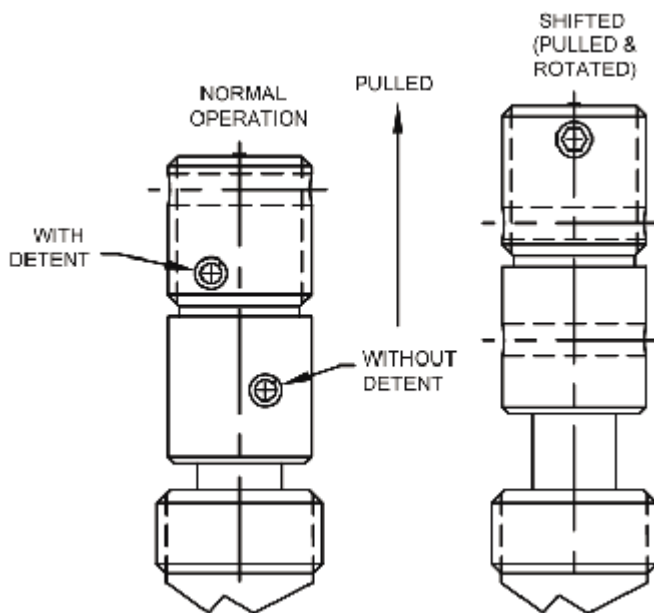
Standard override option for pull type solenoid valves.

This override is offered with or without the detent option.

With detent option, pull and rotate 180 degrees, when released the override will remain in that position.

To return to the normal operating position, Rotate knob 180 degrees and release.

Without the detent option, knob must be pulled and held to maintain override position.



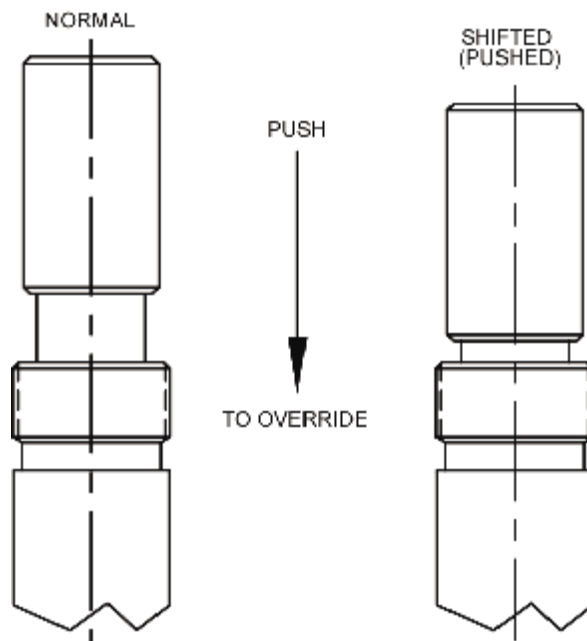
PUSH TYPE MANUAL OVERRIDE OPTION

Standard push type override option used for 4W3P valves.

To activate override option, push knob and Hold, when released, the valve returns to normal operation position.

Note: override option only functions in the push (S1 coil) direction.

This override option is intended for emergency use only and is not intended for continuous duty operation.



WARNING: the specifications/application data shown in our catalogs and data sheets are intended only as a general guide for the product described (herein). Any specific application should not be undertaken without independent study, evaluation, and testing for suitability.

MANUAL OVERRIDE OPTIONS - SOLENOID OPERATED VALVES

ROTARY TYPE MANUAL OVERRIDE OPTION

Standard rotary override option for normally open valves.

This override option is offered with or without a knob.

To activate override option, fully rotate using a flat tip screwdriver or the knob in a clockwise direction.

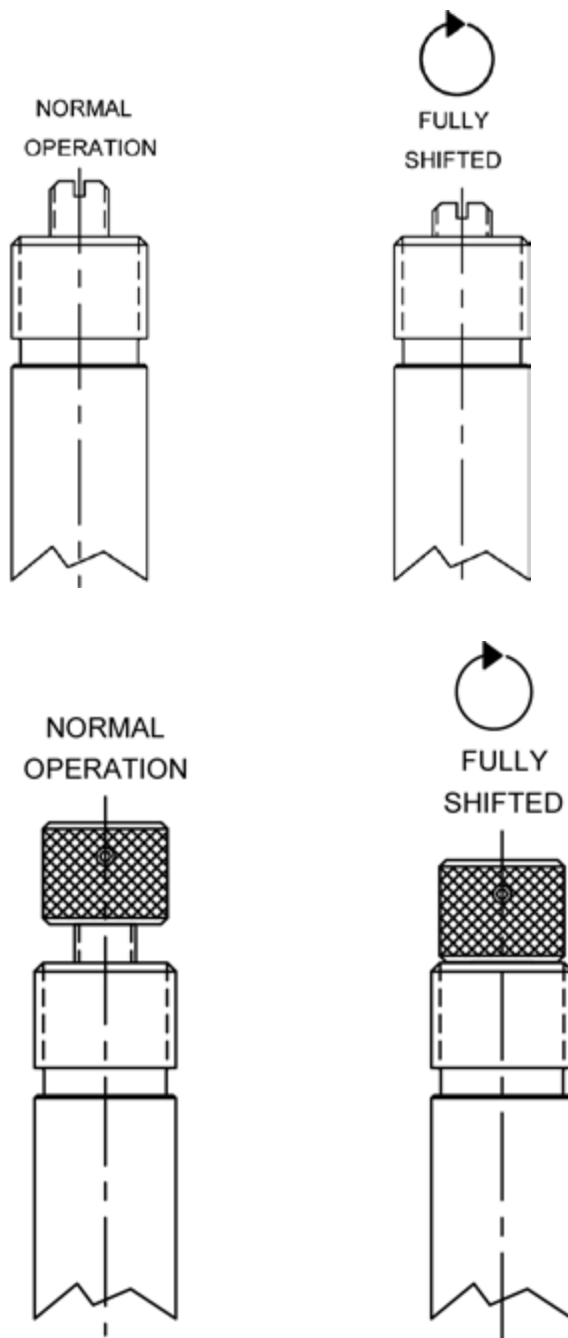
To de-activate override, fully rotate using a flat tip screwdriver or the knob in a counter clockwise direction.

Note: not rotating override fully in either direction will result in partial shifting of valve.

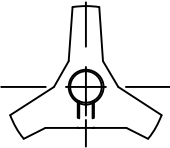
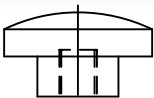
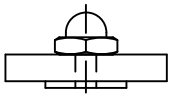
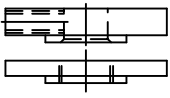
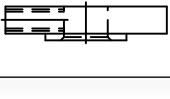
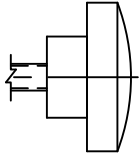

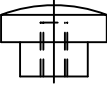
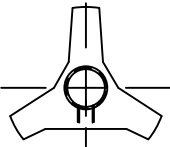
WARNING: Over torque of manual override could result in valve damage.

Note: rotary Pull Type Manual Override Option (Pull type Valves-Reference Models HB-S2A & HB-S2B).

Because HB-S2A & HB-S2B are Pull type Valves, “fully in” is the normal state and “fully out” is “fully shifted” state so opposite of what is shown in image.”



MANUAL OVERRIDE OPTIONS - MECHANICAL VALVES

| | | |
|---|--|--------------------------------------|
|  | 22020047 34502032 66700059 | MINI SERIES |
|  | 34502000 | DELTA SERIES |
|  | 22020005 34502006 36202008 | DELTA SERIES |
|  | 22020004 34502004 34502003 66700027 | DELTA SERIES |
|  | 22020003 34502003 66700027 | DELTA SERIES |
|  | 34502008 | DELTA SERIES |
|  | 22020049 34502017 66700059 | DELTA SERIES SUPER SERIES |
|  | 34502024 | POWER SERIES |
|  | 22020058 34502019 66700059 | POWER SERIES |

WARNING: the specifications/application data shown in our catalogs and data sheets are intended only as a general guide for the product described (herein). Any specific application should not be undertaken without independent study, evaluation, and testing for suitability.

Via Malavolti, 36 - 41122 Modena - ITALY - Phone +39 (059) 254895 - Fax +39 (059) 253512 - mail: tecnord@tecnord.com - www.tecnord.com