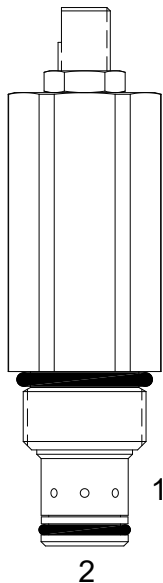


DE-FAR FULLY ADJUSTABLE FLOW CONTROL VALVE, PRESSURE COMPENSATED



DESCRIPTION

10 size, 7/8-14 thread, "Delta" series, pressure compensated, fully adjustable flow control valve.

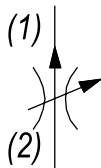
OPERATION

The DE-FAR maintains a constant flow rate out of (1) regardless of load pressure changes in the circuit downstream of (1). The adjustable control orifice can be set to customer flow specification. The valve begins to respond to load changes when the flow through the valve creates a pressure differential across the control orifice. Consult chart to see regulation at high and low adjustment settings. Reverse flow (1) to (2) returns through the control orifice and is non-compensated. The regulated flow increases from low to high with counterclockwise rotation of the adjustment knob.

FEATURES

- Hardened parts for long life.
- Industry common cavity.
- Fine low-torque adjustment.

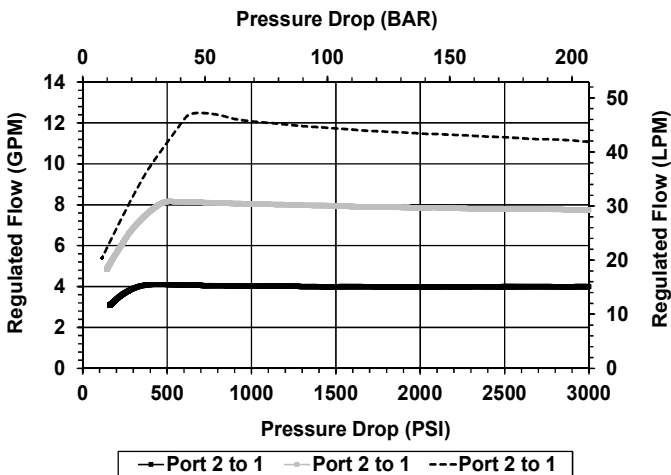
HYDRAULIC SYMBOL



"Fully Adjustable," Valve can be adjusted down to leakage flow.

PERFORMANCE

Actual Test Data (Cartridge Only)



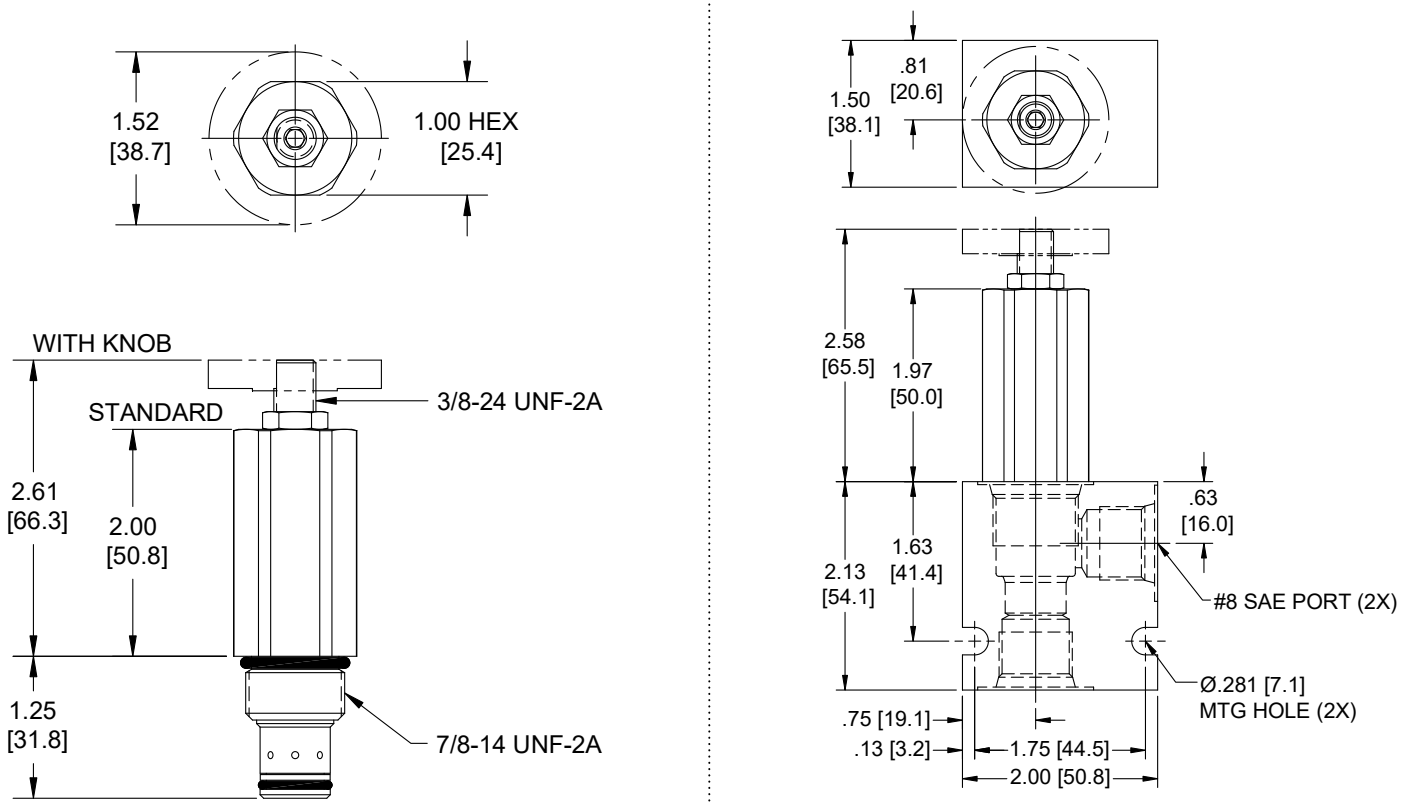
VALVE SPECIFICATIONS

Max Regulated Flow	12 GPM (45 LPM)
Rated Operating Pressure	3500 PSI (241 bar)
Viscosity Range	36 to 3000 SSU (3 to 647 cSt)
Filtration	ISO 18/16/13
Media Operating Temp. Range	-40° to 250°F (-40° to 120°C)
Weight	.49 lbs (.22 kg)
Operating Fluid Media	General Purpose Hydraulic Fluid
Cartridge Torque Requirements	30 ft-lbs (40.6 Nm)
Cavity	DELTA 2W
Seal Kit	21191200

WARNING: the specifications/application data shown in our catalogs and data sheets are intended only as a general guide for the product described (herein). Any specific application should not be undertaken without independent study, evaluation, and testing for suitability.

Via Malavolti, 36 - 41122 Modena - ITALY - Phone +39 (059) 254895 - Fax +39 (059) 253512 - mail: tecnord@tecnord.com - www.tecnord.com

DIMENSIONS



Body Weight: 47 lbs (.21 kg)

ORDERING INFORMATION

DE-FAR		-	-	-	-
		OPTIONS		BODIES	
		Buna, External Adj. w/locknut	00	Blank	Without Body
		Viton, External Adj. w/locknut	V0	N	3/8 NPTF Ports
		Buna, Knob	0K	S	#8 SAE Ports
		Viton, Knob	VK		
		FLOW SETTING			
		XXXX 0-12 GPM			
		Preset			
		Example: 0005 = 5 GPM ±10%			