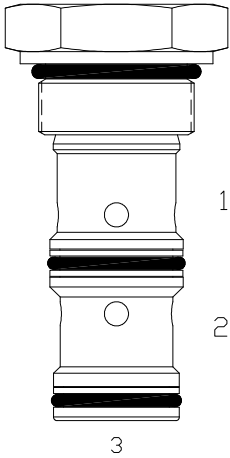


SK-FCP FIXED PRIORITY FLOW CONTROL VALVE



DESCRIPTION

16 size, 1 5/16-12 thread, "Super" series, fixed priority flow control valve.

OPERATION

The SK-FCP allows pressure compensated flow from (3) to (1) regulated by the pressure present at (3). Excess flow bypasses out (2). The spring chamber is constantly vented at (1).

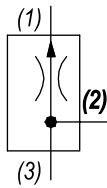
FEATURES

- Hardened parts for long life.
- Industry common cavity.



For adjustable setting see SK-FCQ.

HYDRAULIC SYMBOL

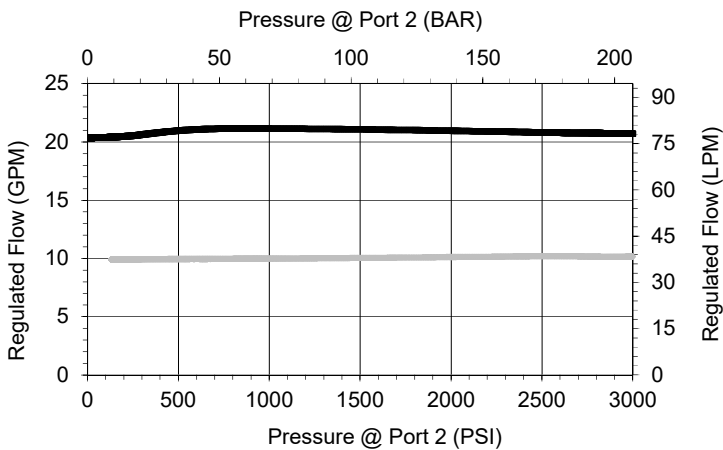


PERFORMANCE

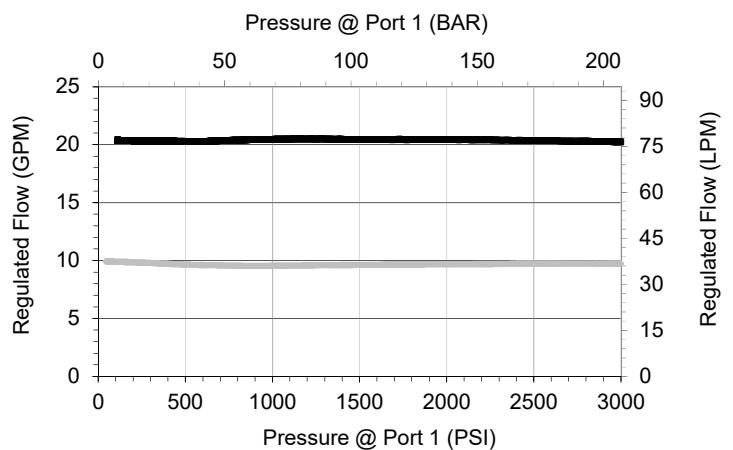
Actual Test Data (Cartridge Only)

VALVE SPECIFICATIONS

Priority Flow Rate	As specified from 5-25 GPM (19-95 LPM)
Rated Operating Pressure	500-3000 PSI (34-207 bar)
Viscosity Range	36 to 3000 SSU (3 to 647 cSt)
Filtration	ISO 18/16/13
Media Operating Temp. Range	-40° to 250°F (-40° to 120°C)
Weight	.85 lbs (.39 kg)
Operating Fluid Media	General Purpose Hydraulic Fluid
Cartridge Torque Requirements	90 ft-lbs (122 Nm)
Cavity	SUPER 3W
Cavity Form Tool (Finishing)	40500018
Seal Kit	21191404



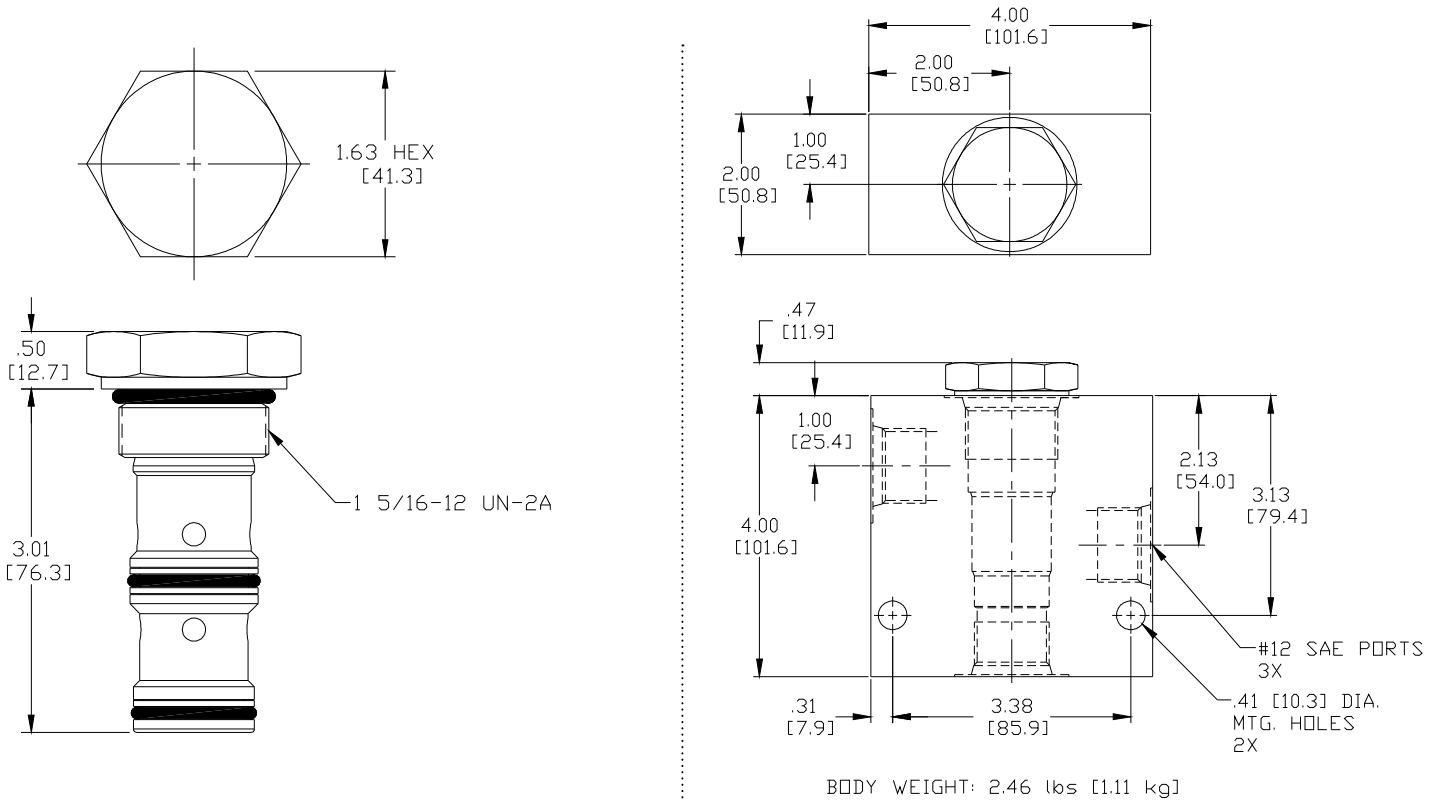
- Bypass port 2 loaded, priority port 1 unloaded



- Priority port 1 loaded, bypass port 2 unloaded

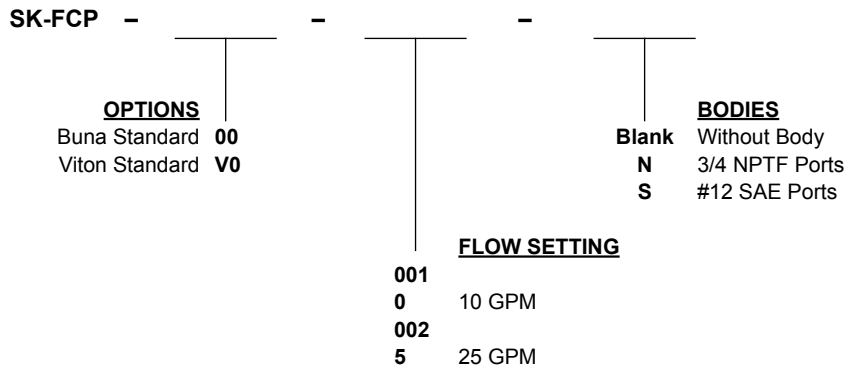
WARNING: the specifications/application data shown in our catalogs and data sheets are intended only as a general guide for the product described (herein). Any specific application should not be undertaken without independent study, evaluation, and testing for suitability.

DIMENSIONS



Body Weight: 2.46 lbs (1.11 kg)

ORDERING INFORMATION



Additional flow settings available upon request