

AF-PRP MOTORIZED PRESSURE REDUCING, RELIEVING VALVE

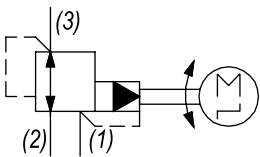


DESCRIPTION
10 size, 7/8-14 thread, “Delta” series, motorized adjustable pressure reducing, relieving valve, pilot operated.

OPERATION
The AF-PRP can be adjusted to any position between fully open and fully closed applying electrical power to the motor. When a pre-determined pressure is reached at (3), the spool shifts to restrict input flow at (2), thereby reducing (restricting) flow. If valve and pressure at port (3) exceeds setting, spool shift to open passage at port (1), thereby regulating pressure at port (3) by relieving excess flow.

- FEATURES**
- Hardened parts for long life.
 - Industry common cavity.

HYDRAULIC SYMBOL

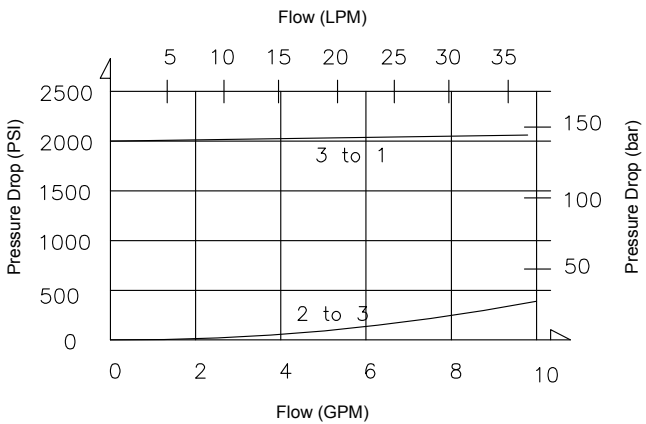
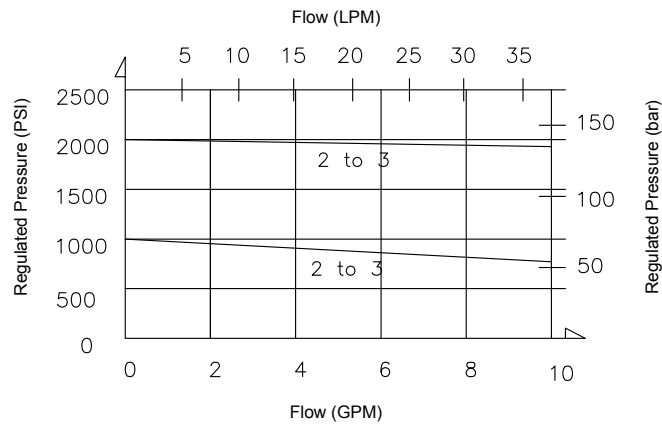


PERFORMANCE

VALVE SPECIFICATIONS

Nominal Flow	10 GPM (38 LPM)
Rated Operating Pressure	4000 PSI (276 bar)
Viscosity Range	36 to 3000 SSU (3 to 647 cSt)
Filtration	ISO 18/16/13
Media Operating Temp. Range	-40° to 250°F (-40° to 120°C)
Weight	.59 lbs (.27 kg)
Operating Fluid Media	General Purpose Hydraulic Fluid
Cartridge Torque Requirements	30 ft-lbs (40.6 Nm)
Current Draw	500 mA (12 VDC) / 250 mA (24 VDC)
Cavity	DELTA 3W
Cavity Tools Kit	
(form tool, reamer, tap)	40500001
Seal Kit	21191206

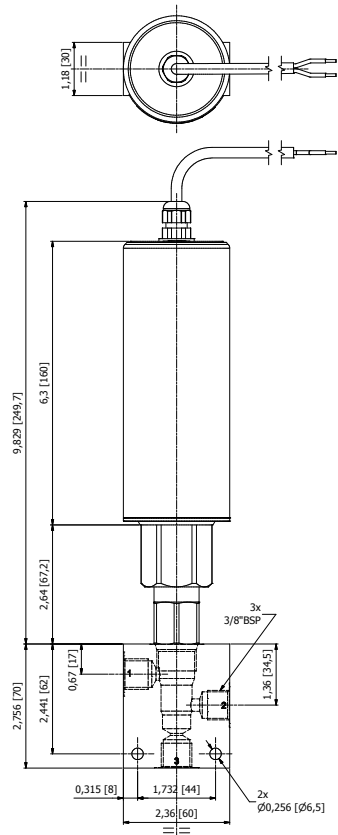
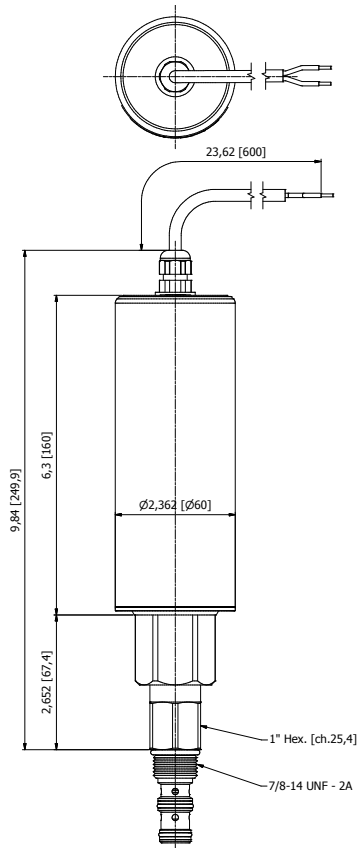
Gear ratio	Response time (full closed to full open)
100	7 sec.
250	14 sec.
500	28 sec.



WARNING: the specifications/application data shown in our catalogs and data sheets are intended only as a general guide for the product described (herein). Any specific application should not be undertaken without independent study, evaluation, and testing for suitability.

Via Malavolti, 36 - 41122 Modena - ITALY - Phone +39 (059) 254895 - Fax +39 (059) 253512 - mail: tecnord@tecnord.com - www.tecnord.com

DIMENSIONS



(for bodies style and sizes see section "Accessories")

ORDERING INFORMATION

AF-PRP -		-	-	-	-
OPTIONS					
Buna Standard 00					
GEAR RATIO					
R500					
R250					
R100					
VOLTAGE					
24					
12					
BODIES					
Blank					
N					
S					
Without Body					
3/8" BSP Ports					
#6 SAE Ports					

Note: Dual lead termination (60 cm long.)

W 50/ 2022 **WARNING:** the specifications/application data shown in our catalogs and data sheets are intended only as a general guide for the product described (herein). Any specific application should not be undertaken without independent study, evaluation, and testing for suitability.