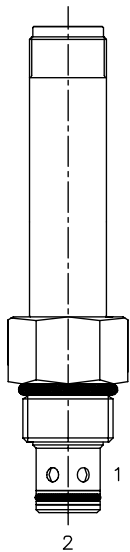


EE-P2H 2 WAY NORMALLY OPEN, PROPORTIONAL FLOW CONTROL VALVE



DESCRIPTION

10 size, 7/8-14 thread, solenoid operated, 2 way normally open, proportional flow control valve.

OPERATION

When de-energized the EE-P2H allows flow from (1) to (2). When fully energized, the valve blocks flow at port (1) and (2). Flow is proportional to current applied to the coil. A compensator must be used to create a pressure compensated flow control function.

OPERATION OF MANUAL OVERRIDE OPTION: to override, turn the manual override screw clockwise. To release turn the manual override screw counterclockwise.

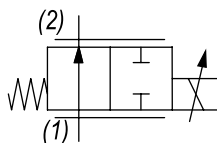
FEATURES

- Efficient wet-armature construction.
- Cartridges are voltage interchangeable.
- Industry common cavity.
- Unitized, molded coil design.
- Continuous duty rated solenoid.
- Optional coil voltages and terminations.



Curve is attained with Tecnord QC-CP3 compensator at with various settings.

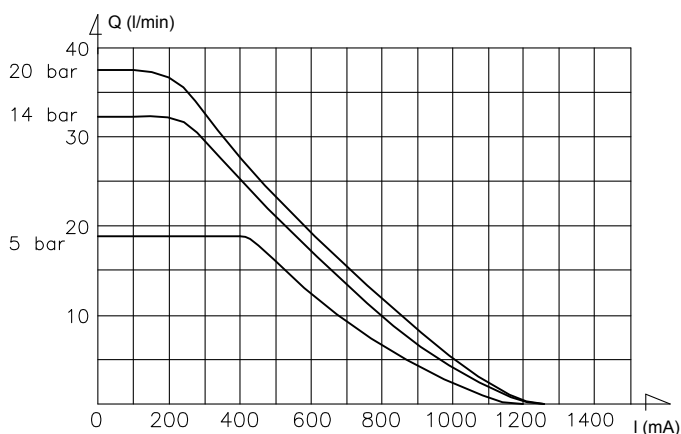
HYDRAULIC SYMBOL



PERFORMANCE

Flow (l/min) vs. Current (mA)

Coil 12 VDC - Delta P = 5, 14, 20 bar; Toil = 40°C



VALVE SPECIFICATIONS

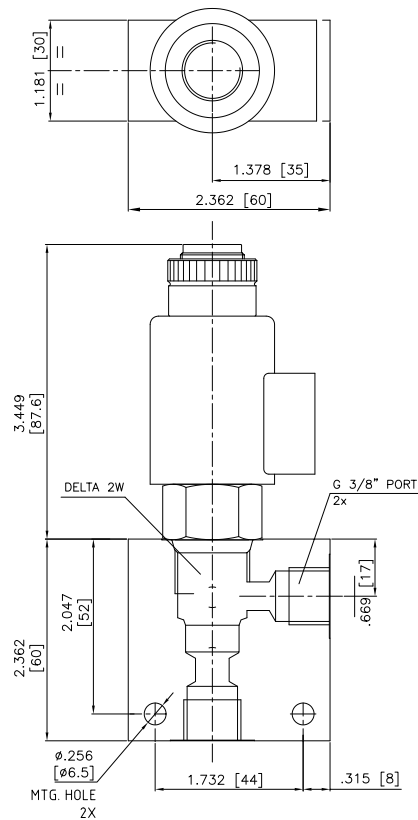
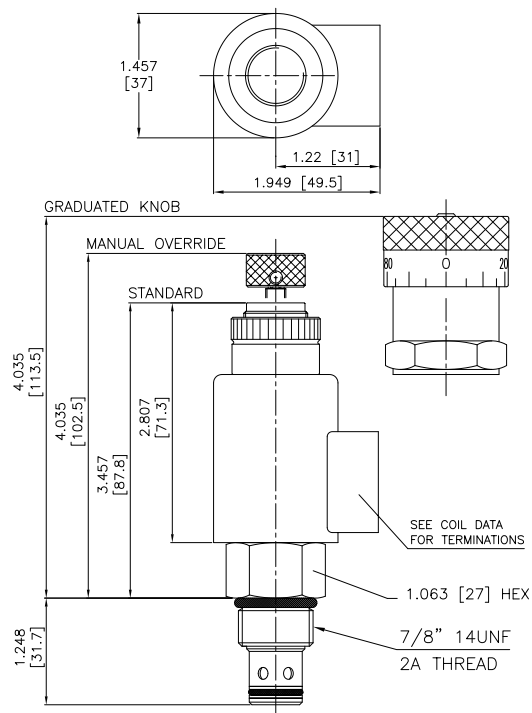
Flow Range	See curve
Max System Pressure	3500 PSI (241 bar)
Leakage	Max 100 cc/min at 245 bar
Hysteresis	±4%
Viscosity Range	36 to 3000 SSU (3 to 647 cSt)
Filtration	ISO 18/16/13
Media Operating Temp. Range	-30°C / +100°C
Weight	.58 lbs (.26 kg)
Operating Fluid Media	General Purpose Hydraulic Fluid
Cartridge Torque Requirements	26 ft-lbs (35 Nm)
Coil Nut Torque Requirements	2-3 ft-lbs (3-4 Nm)
Cavity	DELTA 2W
Cavity Tools Kit (form tool, reamer, tap)	40500000
Seal Kit	21191200

COIL SPECIFICATIONS

Current Supply Characteristics	PWM (Pulse Width Modulation)
Rated Current Range	400-1400 mA
PWM or Super-Imposed	
Dither Frequency	100-150 Hz
Coil Resistance (12 VDC)	7.2 Ohm ±5% at 68°F (20°C)

WARNING: the specifications/application data shown in our catalogs and data sheets are intended only as a general guide for the product described (herein). Any specific application should not be undertaken without independent study, evaluation, and testing for suitability.

DIMENSIONS



(for bodies style and sizes see section "Accessories")

ORDERING INFORMATION

Approximate Coil Weight: .47 lbs (.21 kg)

EE-P2H -

OPTIONS

- Buna, Push Type Override Standard **0P**
- Buna, Screw Type Override (Knob) **0S**
- Buna, Screw Type Override (Grad. Knob) **0K**

BODIES

- Blank Without Body
- N** 3/8" BSP Ports
- S** #8 SAE Ports

VOLTAGE

- 12** 12 VDC
- 24** 24 VDC

"F" COIL TERMINATION

- HC** DIN 43650 (Hirschmann)
- DI** Deutsch-Integral DT04-2P
- JT** AMP Jr. Timer

NOTE: for other seals, consult factory.