

FPR-L2S PROPORTIONAL ROLLER SWITCH WITH HALL EFFECT SENSOR**FEATURES**

- Mini proportional roller switch with optimum ergonomic design for panel-mounting.
- High performance hall effect sensor circuitry.
- Twin channel configuration for redundancy.

MECHANICAL SPECIFICATIONS

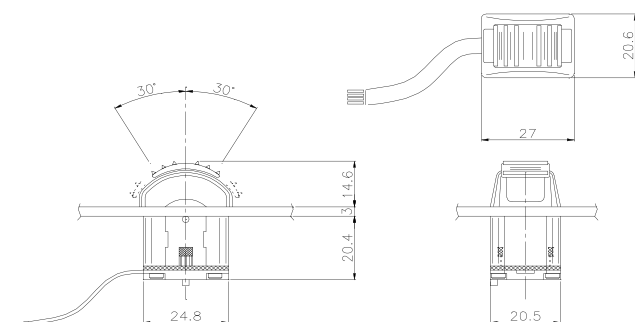
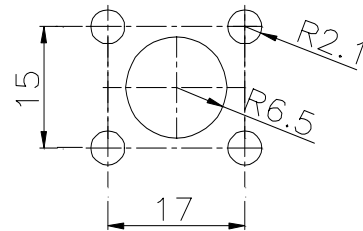
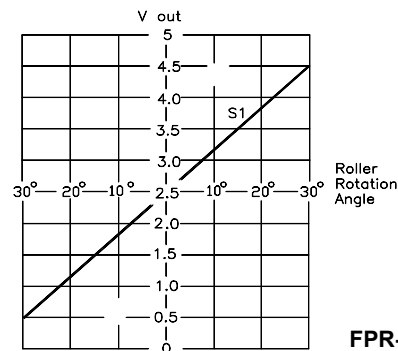
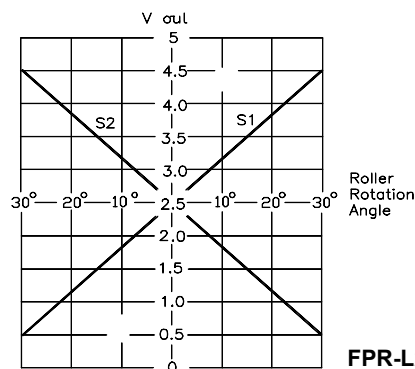
| | |
|------------------------------|----------------------------------|
| Rotation angle: | ±30° |
| Body material: | acetal resin / teflon compound |
| Colours available: | grey, blue, green, yellow, black |
| Rubber gaiter material: | EPDM / 35-45 shore - A |
| Operating temperature range: | -25°C / +85°C |
| Environmental protection: | IP 68 (above panel) |
| Life: | > 5.000.000 cycles |

ELECTRICAL SPECIFICATIONS

| | |
|--|---|
| Signal output @ rest: | 2.5 VDC ±0.1 V |
| Supply voltage: | H - Version = 8÷32 VDC 0 - Version = 5 VDC ±5% |
| Full output signal range: | 0.5 - 4.5 V, ±0.2 V |
| Current consumption at rest: | SNCH (S1 only) 15 mA TWCH (S1/S2) 25 mA |
| Rated output current: | 1 mA |
| Connection type: flying leads = coloured flat cable 100 mm connector = molex Minifit 4 poles P.N. 5559-4P Deutsch 3 poles P.N. DTO4-3P | |

ELECTRICAL CONNECTIONS**FPR - L2S - SNCH (single chan.) FPR - L2S - TWCH (twin chan.)**

- | | |
|------------------------|--------------------------|
| (1) Yellow: +5 VDC | (1) Yellow: + 5 VDC |
| (2) Orange: (-) ground | (2) Orange: (-) ground |
| (3) Red: output 1 (S1) | (3) Red: output 1 (S1) |
| (4) Brown: not used | (4) Brown: output 1 (S2) |

OVERALL DIMENSIONS**PANEL CUT-OUT****OUTPUT SIGNAL CONTROL CHARACTERISTIC****FPR-L2S/ SNCH (single channel)****FPR-L2S-TWCH (twin channel)****FPR ORDERING INFORMATION: see page JK7**

WARNING: the specifications/application data shown in our catalogs and data sheets are intended only as a general guide for the product described (herein). Any specific application should not be undertaken without independent study, evaluation, and testing for suitability.

Via Malavolti, 36 - 41122 Modena - ITALY - Phone +39 (059) 254895 - Fax +39 (059) 253512 - mail: tecnord@tecnord.com - www.tecnord.com