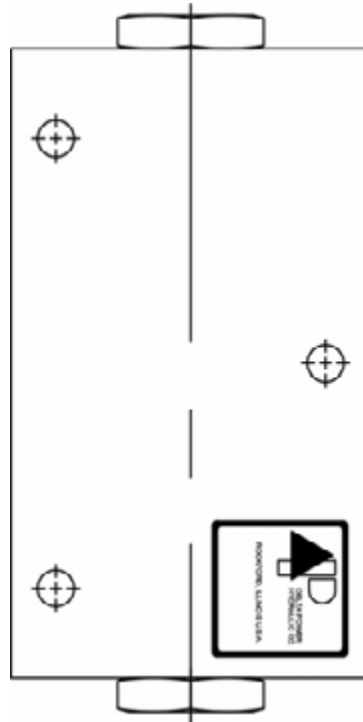


DOUBLE, P.O. CHECK VALVES (PRE-ENGINEERED BLOCKS)



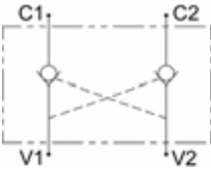
Section / Description	page
-----------------------	------

SERIES DOUBLE PILOT OPERATED CHECK VALVE	HS3
---	-----

WARNING: the specifications/application data shown in our catalogs and data sheets are intended only as a general guide for the product described (herein). Any specific application should not be undertaken without independent study, evaluation, and testing for suitability.

Via Malavolti, 36 - 41122 Modena - ITALY - Phone +39 (059) 254895 - Fax +39 (059) 253512 - mail: tecnord@tecnord.com - www.tecnord.com

SERIES DOUBLE PILOT OPERATED CHECK VALVE

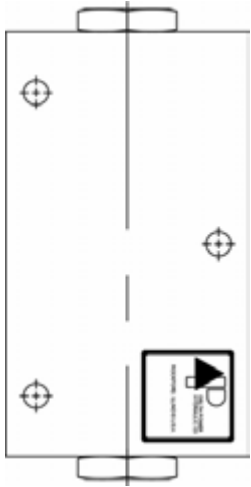
	GPM	PSI	LPM	BAR	CAVITY	MODEL	PAGE
	5	3500	19	241	5/8-18	MD-POC	HD4
	10	3500	38	241	3/4-16	PD-POC	HD6
	15	3500	57	241	7/8-14	DD-POC	HD8
	40	3500	151	241	5/46-12	SD-POC	HD10
	15	4000	57	276	7/8-14	DD-POT	HD12

TYPICAL SCHEMATIC

Typical application for this valve is load holding when pump is off.

WARNING: the specifications/application data shown in our catalogs and data sheets are intended only as a general guide for the product described (herein). Any specific application should not be undertaken without independent study, evaluation, and testing for suitability.

MD-POC DOUBLE PILOT OPERATED CHECK VALVE



DESCRIPTION

7 size, 5/8-18 thread, "Mini" series, double pilot operated check valve.

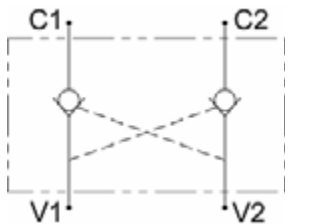
OPERATION

The MD-POC allows flow to pass from (V1) to (C1) and (V2) to (C2). The valve blocks flow from (C1) to (V1) and from (C2) to (V2). Blocked flow is released when pilot pressure is applied to port opposite valve (V1) and/or port (V2) accordingly. The valve has a 6.7:1 pilot ratio, so at least .141 of the load pressure at port (C1) or (C2) is required at the pilot lines ports (V2) or (V1) respectively to open the flow passage to allow flow from ports (C1) or (C2) respectively. The check is spring-biased at 50 PSI (3.4 bar) to assure holding in static or no-load conditions.

FEATURES

- Hardened internal parts for long life.
- Anodized aluminum body for corrosion protection.

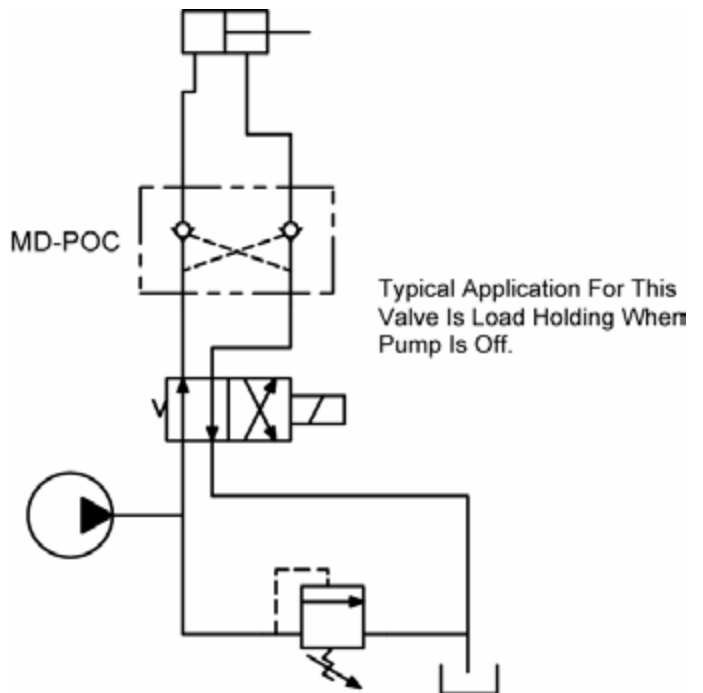
HYDRAULIC SYMBOL



VALVE SPECIFICATIONS

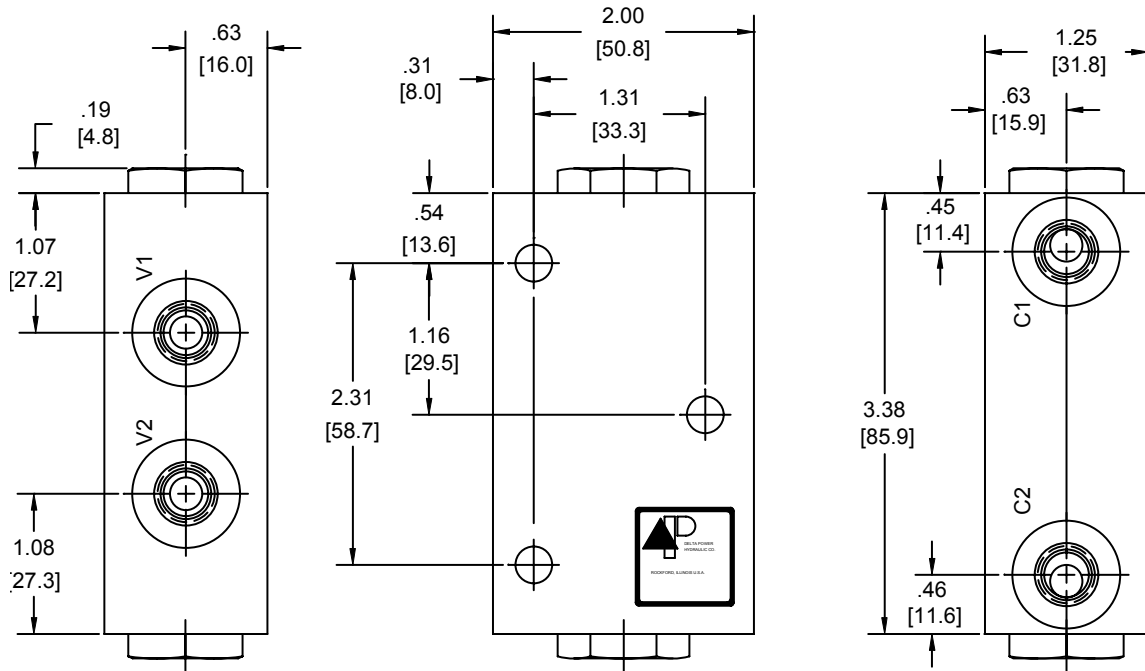
Nominal Flow	5 GPM (19 LPM)
Rated Operating Pressure	3500 PSI (241 bar)
Typical Internal Leakage (150 SSU)	0-5 drops/min
Viscosity Range	36 to 3000 SSU (3 to 647 cSt)
Filtration	30 micron nominal
Pilot Ratio	6.7:1
Media Operating Temp. Range	-40° to 250°F (-40° to 120°C)
Weight	.92 lbs (.42 kg)
Operating Fluid Media	General Purpose Hydraulic Fluid
Cartridge Torque Requirements	15 ft-lbs (20.3 Nm)
Cartridge Crack Pressure	50 PSI (3.4 bar)

TYPICAL SCHEMATIC



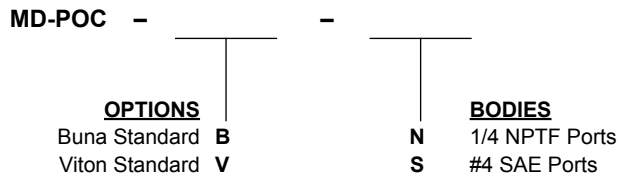
WARNING: the specifications/application data shown in our catalogs and data sheets are intended only as a general guide for the product described (herein). Any specific application should not be undertaken without independent study, evaluation, and testing for suitability.

DIMENSIONS



SAE PORTS SHOWN
 MTG. HOLES ARE .28 DIA.
 NOTE: DIMENSIONS IN BRACKETS ARE MILLIMETERS
 O-RINGS ARE STANDARD ON PISTON ASSEMBLY
 CHECK VALVE USED IS A MA-CVA

ORDERING INFORMATION



PD-POC DOUBLE PILOT OPERATED CHECK VALVE



DESCRIPTION

8 size, 3/4-16 thread, "Power" series, double pilot operated check valve.

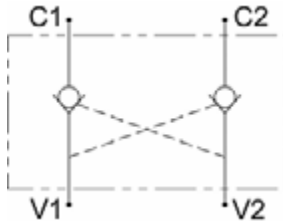
OPERATION

The PD-POC allows flow to pass from (V1) to (C1) and (V2) to (C2). The valve blocks flow from (C1) to (V1) and from (C2) to (V2). Blocked flow is released when pilot pressure is applied to port opposite valve (V1) and/or port (V2) accordingly. The valve has a 4:1 pilot ratio, so at least .250 of the load pressure at port (C1) or (C2) is required at the pilot lines ports (V2) or (V1) respectively to open the flow passage to allow flow from ports (C1) or (C2) respectively. The check is spring-biased at 50 PSI (3.4 bar) to assure holding in static or no-load conditions.

FEATURES

- Hardened internal parts for long life.
- Anodized aluminum body for corrosion protection.

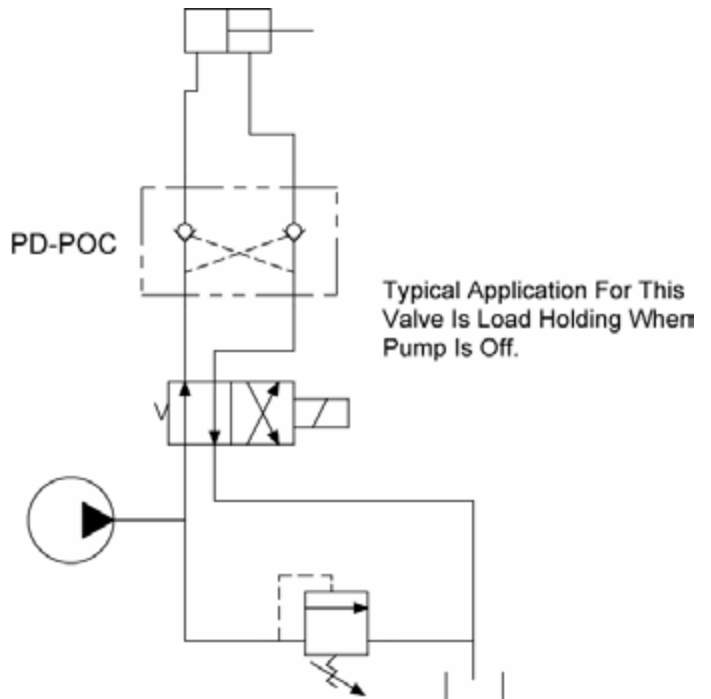
HYDRAULIC SYMBOL



VALVE SPECIFICATIONS

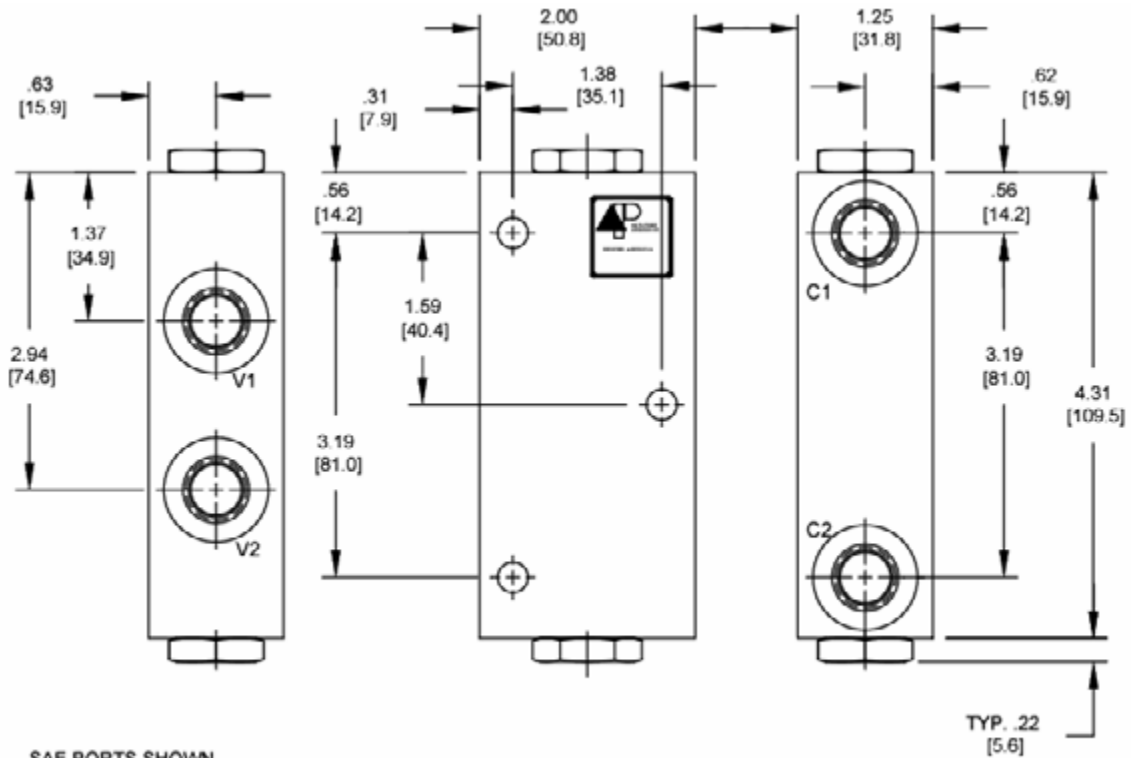
Nominal Flow	10 GPM (38 LPM)
Rated Operating Pressure	3500 PSI (241 bar)
Typical Internal Leakage (150 SSU)	0-5 drops/min
Viscosity Range	36 to 3000 SSU (3 to 647 cSt)
Filtration	30 micron nominal
Pilot Ratio	4:1
Media Operating Temp. Range	-40° to 250°F (-40° to 120°C)
Weight	1.2 lbs (.54 kg)
Operating Fluid Media	General Purpose Hydraulic Fluid
Cartridge Torque Requirements	25 ft-lbs (34 Nm)
Cartridge Crack Pressure	50 PSI (3.4 bar)

TYPICAL SCHEMATIC



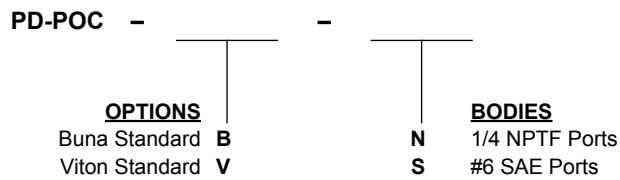
WARNING: the specifications/application data shown in our catalogs and data sheets are intended only as a general guide for the product described (herein). Any specific application should not be undertaken without independent study, evaluation, and testing for suitability.

DIMENSIONS

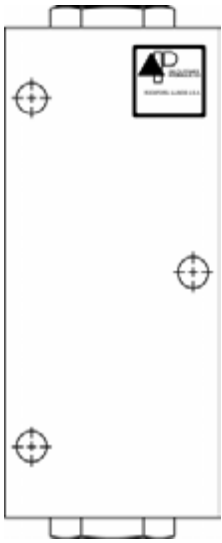


SAE PORTS SHOWN
 MTG. HOLES ARE .28 DIA.
 O-RINGS ARE STANDARD ON PISTON ASSEMBLY
 CHECK VALVE USED IS A PB-CVC

ORDERING INFORMATION



DD-POC DOUBLE PILOT OPERATED CHECK VALVE



DESCRIPTION

10 size, 7/8-14 thread, "Delta" series, double pilot operated check valve.

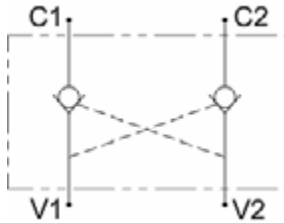
OPERATION

The DD-POC allows flow to pass from (V1) to (C1) and (V2) to (C2). The valve blocks flow from (C1) to (V1) and from (C2) to (V2). Blocked flow is released when pilot pressure is applied to port opposite valve (V1) and/or port (V2) accordingly. The valve has a 4:1 pilot ratio, so at least .250 of the load pressure at port (C1) or (C2) is required at the pilot lines ports (V2) or (V1) respectively to open the flow passage to allow flow from ports (C1) or (C2) respectively. The check is spring-biased at 90 PSI (6.2 bar) to assure holding in static or no-load conditions.

FEATURES

- Hardened internal parts for long life.
- Anodized aluminum body for corrosion protection.

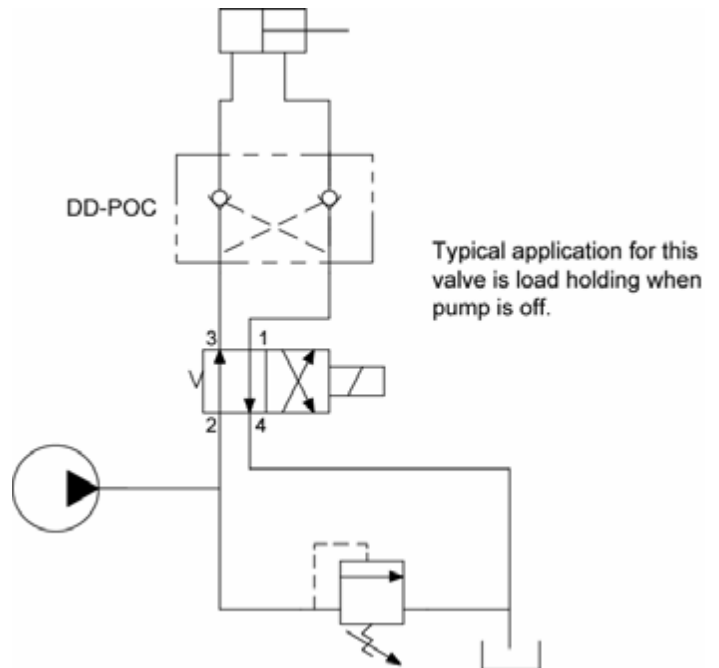
HYDRAULIC SYMBOL



VALVE SPECIFICATIONS

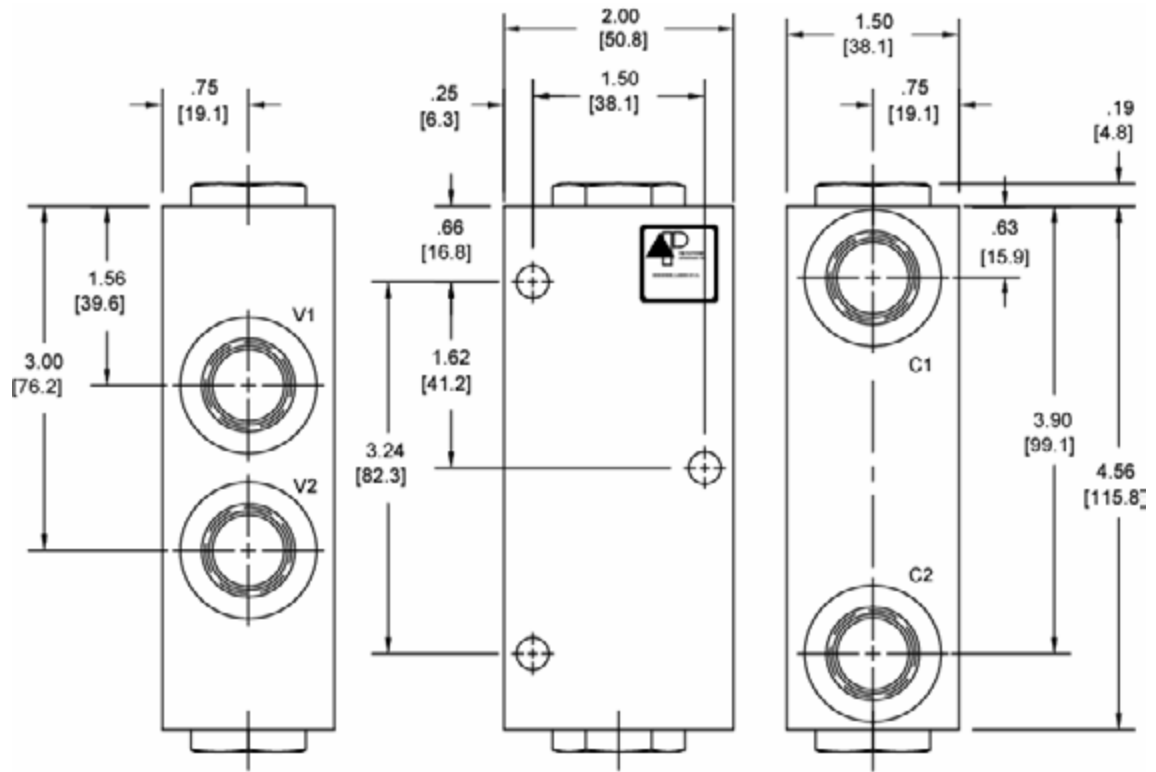
Nominal Flow	15 GPM (57 LPM)
Rated Operating Pressure	3500 PSI (241 bar)
Typical Internal Leakage (150 SSU)	0-5 drops/min
Viscosity Range	36 to 3000 SSU (3 to 647 cSt)
Filtration	30 micron nominal
Pilot Ratio	4:1
Media Operating Temp. Range	-40° to 250°F (-40° to 120°C)
Weight	1.5 lbs (.68 kg)
Operating Fluid Media	General Purpose Hydraulic Fluid
Cartridge Torque Requirements	30 ft-lbs (40.6 Nm)
Cartridge Crack Pressure	90 PSI (6.2 bar)

TYPICAL SCHEMATIC



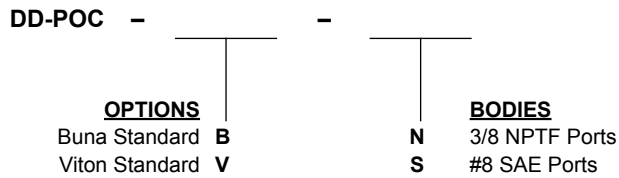
WARNING: the specifications/application data shown in our catalogs and data sheets are intended only as a general guide for the product described (herein). Any specific application should not be undertaken without independent study, evaluation, and testing for suitability.

DIMENSIONS

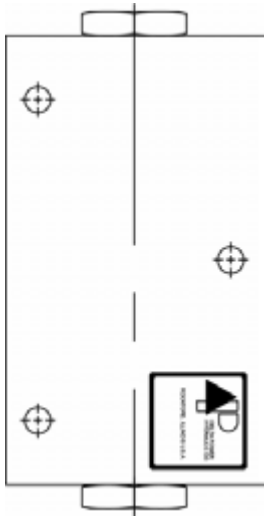


SAE PORTS SHOWN
 MTG. HOLES ARE .28 DIA.
 O-RINGS ARE STANDARD ON PISTON ASSEMBLY
 CHECK VALVE USED IS A DE-CVA

ORDERING INFORMATION



SD-POC DOUBLE PILOT OPERATED CHECK VALVE



DESCRIPTION

16 size, 1 5/16-12 thread, "Super" series, double pilot operated check valve.

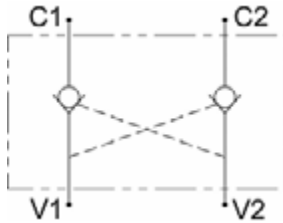
OPERATION

The SD-POC allows flow to pass from (V1) to (C1) and (V2) to (C2). The valve blocks flow from (C1) to (V1) and from (C2) to (V2). Blocked flow is released when pilot pressure is applied to port opposite valve (V1) and/or port (V2) accordingly. The valve has a 3.7:1 pilot ratio, so at least .267 of the load pressure at port (C1) or (C2) is required at the pilot lines ports (V2) or (V1) respectively to open the flow passage to allow flow from ports (C1) or (C2) respectively. The check is spring-biased at 50 PSI (3.4 bar) to assure holding in static or no-load conditions.

FEATURES

- Hardened internal parts for long life.
- Anodized aluminum body for corrosion protection.

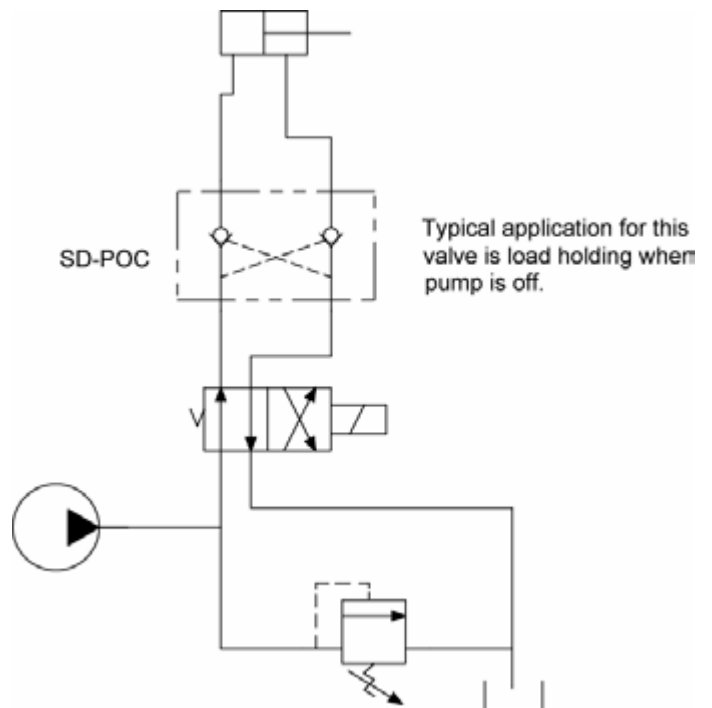
HYDRAULIC SYMBOL



VALVE SPECIFICATIONS

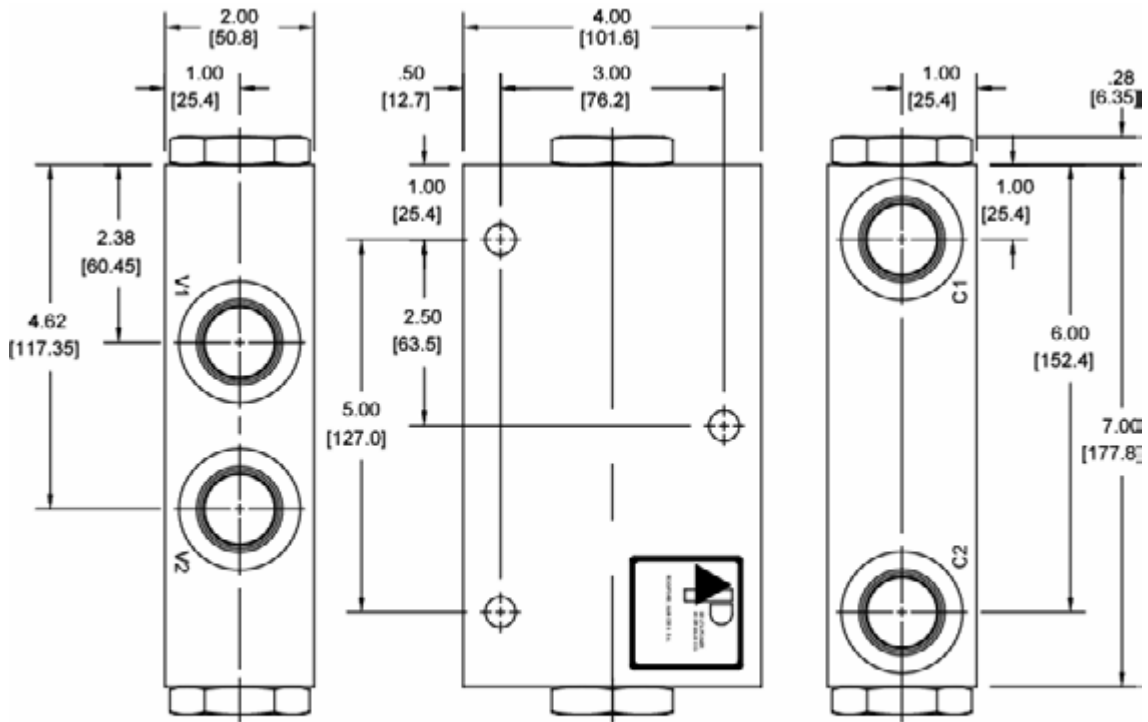
Nominal Flow	40 GPM (151 LPM)
Rated Operating Pressure	3500 PSI (241 bar)
Typical Internal Leakage (150 SSU)	0-5 drops/min
Viscosity Range	36 to 3000 SSU (3 to 647 cSt)
Filtration	30 micron nominal
Pilot Ratio	3.7:1
Media Operating Temp. Range	-40° to 250°F (-40° to 120°C)
Weight	6.0 lbs (2.7 kg)
Operating Fluid Media	General Purpose Hydraulic Fluid
Cartridge Torque Requirements	90 ft-lbs (122 Nm)
Cartridge Crack Pressure	50 PSI (3.4 bar)

TYPICAL SCHEMATIC



WARNING: the specifications/application data shown in our catalogs and data sheets are intended only as a general guide for the product described (herein). Any specific application should not be undertaken without independent study, evaluation, and testing for suitability.

DIMENSIONS



SAE PORTS SHOWN
 MTG. HOLES ARE .41 DIA.
 O-RINGS ARE STANDARD ON PISTON ASSEMBLY
 CHECK VALVE USED IS A SJ-CVA

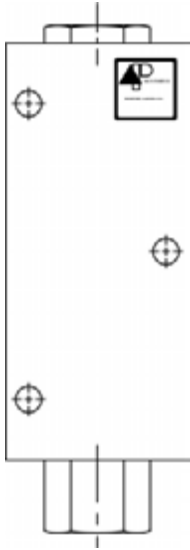
ORDERING INFORMATION

SD-POC - _____ - _____

OPTIONS
 Buna Standard **B**
 Viton Standard **V**

BODIES
S #12 SAE Ports

DD-POT DOUBLE PILOT OPERATED CHECK VALVE W/THERMAL RELIEF VALVE



DESCRIPTION

10 size, 7/8-14 thread, "Delta" series, double pilot operated check valve with thermal relief valve.

OPERATION

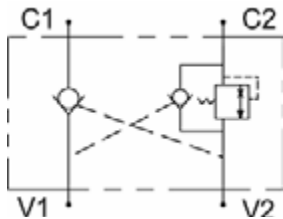
The DD-POT allows flow to pass from (V1) to (C1) and (V2) to (C2). The valve blocks flow from (C1) to (V1) and from (C2) to (V2). Blocked flow is released when pilot pressure is applied to port opposite valve (V1) and/or port (V2) accordingly. Also (C2) port is protected by thermal relief.

The valve has a 4:1 pilot ratio, so at least .250 of the load pressure at port (C1) or (C2) is required at the pilot lines ports (V2) or (V1) respectively to open the flow passage to allow flow from ports (C1) or (C2) respectively. The check is spring-biased at 90 PSI (6.2 bar) to assure holding in static or no-load conditions.

FEATURES

- Hardened internal parts for long life.
- Anodized aluminum body for corrosion protection.

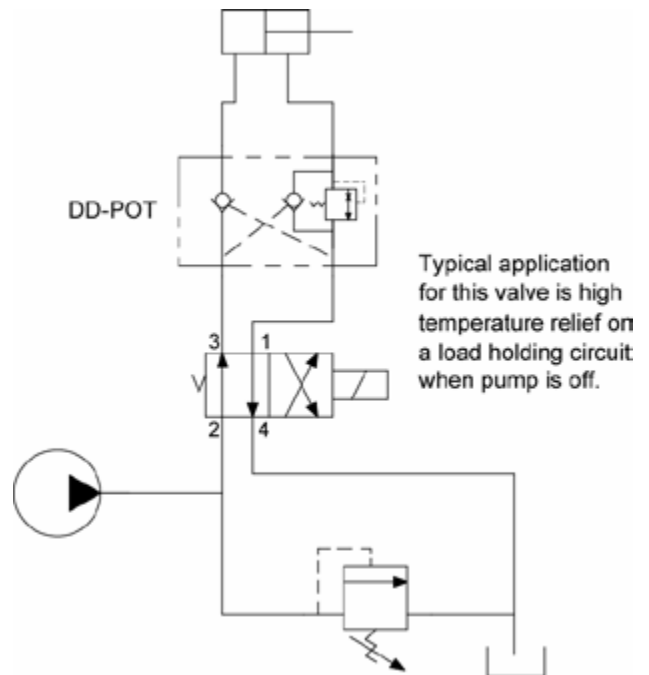
HYDRAULIC SYMBOL



VALVE SPECIFICATIONS

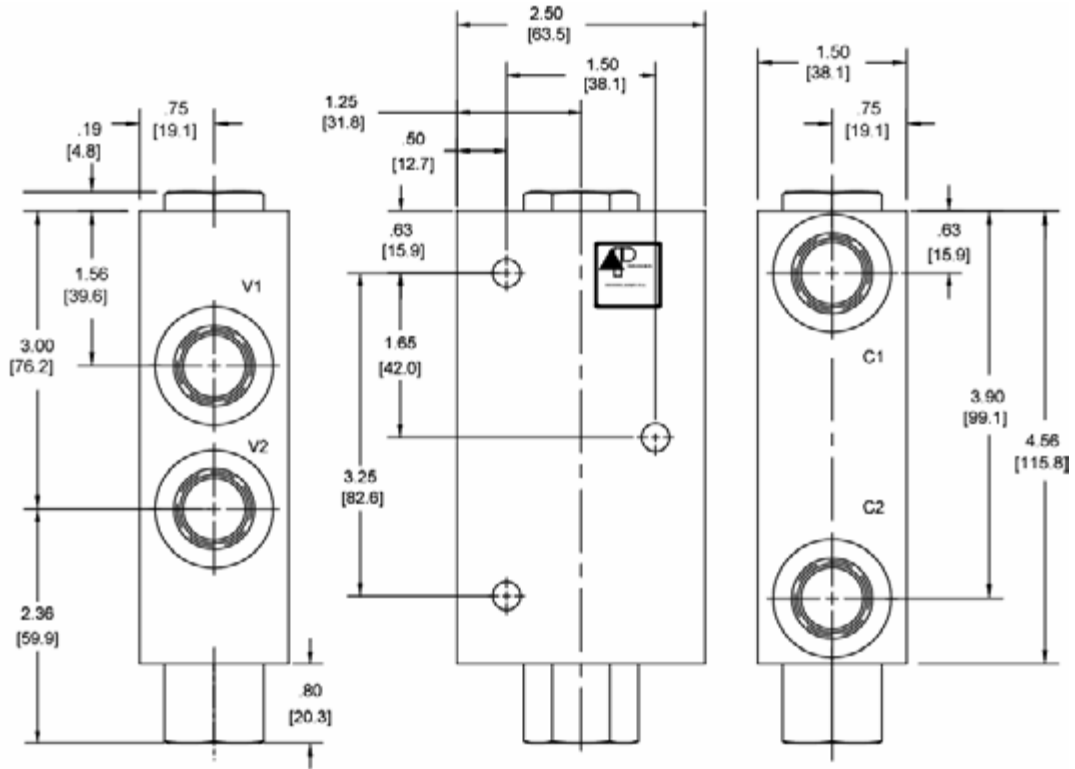
Nominal Flow	15 GPM (57 LPM)
Rated Operating Pressure	4000 PSI (276 bar)
Typical Internal Leakage (150 SSU)	0-5 drops/min
Viscosity Range	36 to 3000 SSU (3 to 647 cSt)
Filtration	30 micron nominal
Pilot Ratio	4:1
Media Operating Temp. Range	-40° to 250°F (-40° to 120°C)
Weight	1.4 lbs (63 kg)
Operating Fluid Media	General Purpose Hydraulic Fluid
Cartridge Torque Requirements	30 ft-lbs (40.6 Nm)
Cartridge Crack Pressure	90 PSI (6.2 bar)

TYPICAL SCHEMATIC



WARNING: the specifications/application data shown in our catalogs and data sheets are intended only as a general guide for the product described (herein). Any specific application should not be undertaken without independent study, evaluation, and testing for suitability.

DIMENSIONS



SAE PORTS SHOWN
 MTG. HOLES ARE .28 DIA.
 O-RINGS ARE STANDARD ON PISTON ASSEMBLY
 CHECK VALVE USED DE-CVA
 THERMAL CHECK USED DE-CVT

ORDERING INFORMATION

