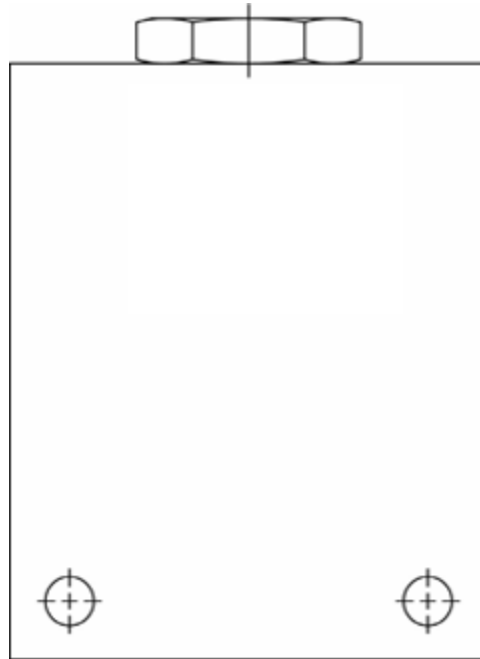


# SINGLE, P.O. CHECK VALVES (PRE-ENGINEERED BLOCKS)




Section / Description	page
<b>SERIES SINGLE PILOT OPERATED CHECK VALVE</b> .....	HS3

**WARNING:** the specifications/application data shown in our catalogs and data sheets are intended only as a general guide for the product described (herein). Any specific application should not be undertaken without independent study, evaluation, and testing for suitability.

Via Malavolti, 36 - 41122 Modena - ITALY - Phone +39 (059) 254895 - Fax +39 (059) 253512 - mail: [tecnord@tecnord.com](mailto:tecnord@tecnord.com) - [www.tecnord.com](http://www.tecnord.com)

**SERIES SINGLE PILOT OPERATED CHECK VALVE**

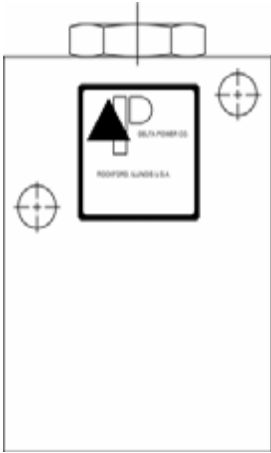
	GPM	PSI	LPM	BAR	CAVITY	MODEL	PAGE
	5	3000	19	207	5/8-18	<b>MS-POC</b>	HS4
	10	3500	38	241	3/4-16	<b>PS-POC</b>	HS6
	15	3500	57	241	7/8-14	<b>DS-POC</b>	HS8
	40	3500	151	241	1 5/16-12	<b>SS-POC</b>	HS10

**TYPICAL SCHEMATIC**

Typical application for this valve is load holding when pump is off.

**WARNING:** the specifications/application data shown in our catalogs and data sheets are intended only as a general guide for the product described (herein). Any specific application should not be undertaken without independent study, evaluation, and testing for suitability.

**MS-POC SINGLE PILOT OPERATED CHECK VALVE**



**DESCRIPTION**

7 size, 5/8-18 thread, "Mini" series, pilot operated check valve.

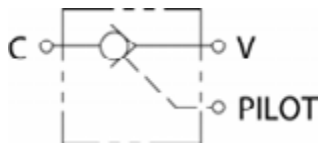
**OPERATION**

The MS-POC allows flow to pass from (V) to (C) and blocks flow from (C) to (V). When pilot pressure is applied to pilot port the valve allows flow from (C) to (V). The valve has a 6.7:1 pilot ratio, so at least .149 of the load pressure is required at the (PILOT) port to open the flow passage to allow flow from ports (C). The check is spring-biased at 50 PSI (3.4 bar) to assure holding in static or no-load conditions.

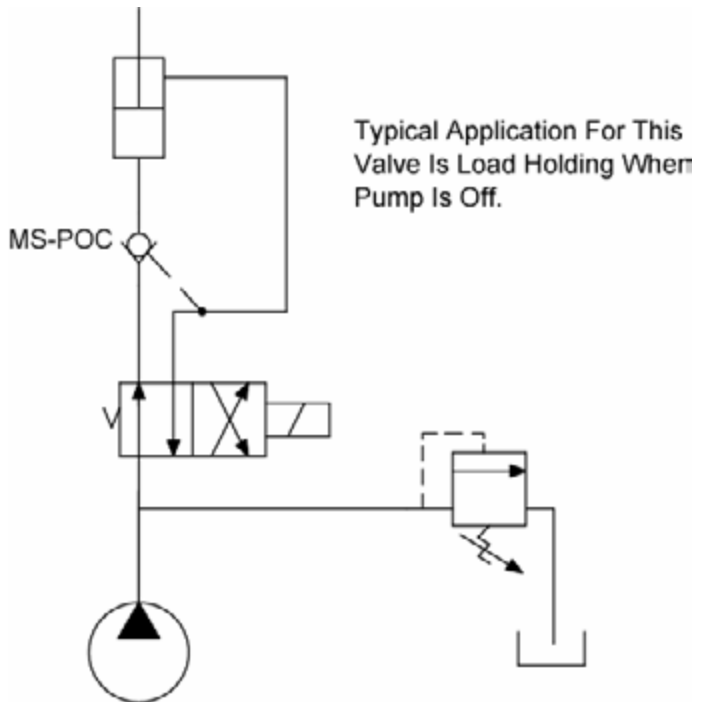
**FEATURES**

- Hardened internal parts for long life.
- Anodized aluminum body for corrosion protection.

**HYDRAULIC SYMBOL**



**TYPICAL SCHEMATIC**

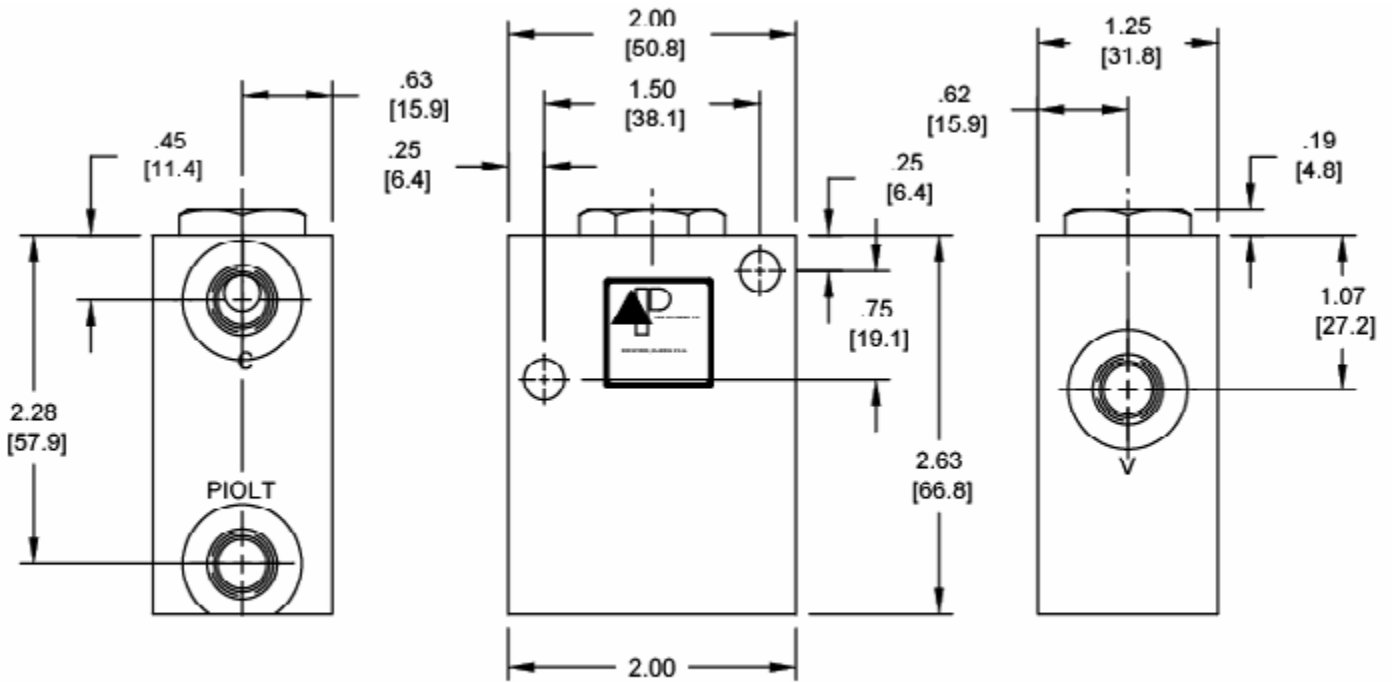


**VALVE SPECIFICATIONS**

Nominal Flow	5 GPM (19 LPM)
Rated Operating Pressure	3000 PSI (207 bar)
Typical Internal Leakage (150 SSU)	0-5 drops/min
Viscosity Range	36 to 3000 SSU (3 to 647 cSt)
Filtration	30 micron nominal
Pilot Ratio	6.7:1
Media Operating Temp. Range	-40° to 250°F (-40° to 120°C)
Weight	.7 lbs (.31 kg)
Operating Fluid Media	General Purpose Hydraulic Fluid
Cartridge Torque Requirements	15 ft-lbs (20.3 Nm)
Cartridge Crack Pressure	50 PSI (3.4 bar)

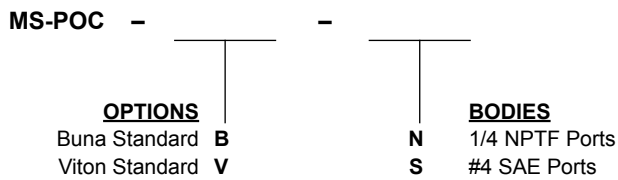
**WARNING:** the specifications/application data shown in our catalogs and data sheets are intended only as a general guide for the product described (herein). Any specific application should not be undertaken without independent study, evaluation, and testing for suitability.

**DIMENSIONS**



SAE PORTS SHOWN  
 MTG. HOLES ARE .28 DIA.  
 O-RINGS ARE STANDARD ON PISTON ASSEMBLY  
 CHECK VALVE USED IS A MA-CVA

**ORDERING INFORMATION**



**PS-POC SINGLE PILOT OPERATED CHECK VALVE**



**DESCRIPTION**

8 size, 3/4-16 thread, "Power" series, pilot operated check valve.

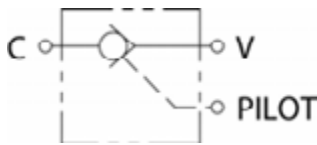
**OPERATION**

The PS-POC allows flow to pass from (V) to (C) and blocks flow from (C) to (V). When pilot pressure is applied to pilot port the valve allows flow from (C) to (V). The valve has a 4:1 pilot ratio, so at least .250 of the load pressure is required at the (PILOT) port to open the flow passage to allow flow from ports (C). The check is spring-biased at 50 PSI (3.4 bar) to assure holding in static or no-load conditions.

**FEATURES**

- Hardened internal parts for long life.
- Anodized aluminum body for corrosion protection.

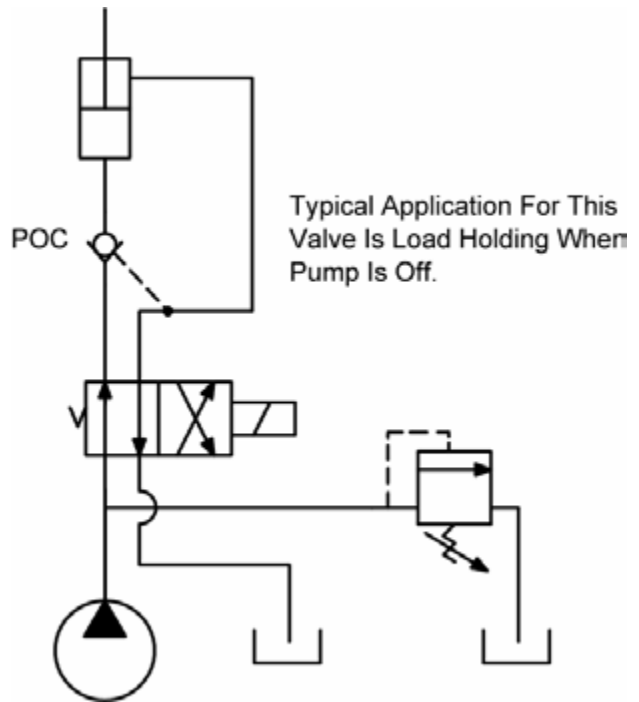
**HYDRAULIC SYMBOL**



**VALVE SPECIFICATIONS**

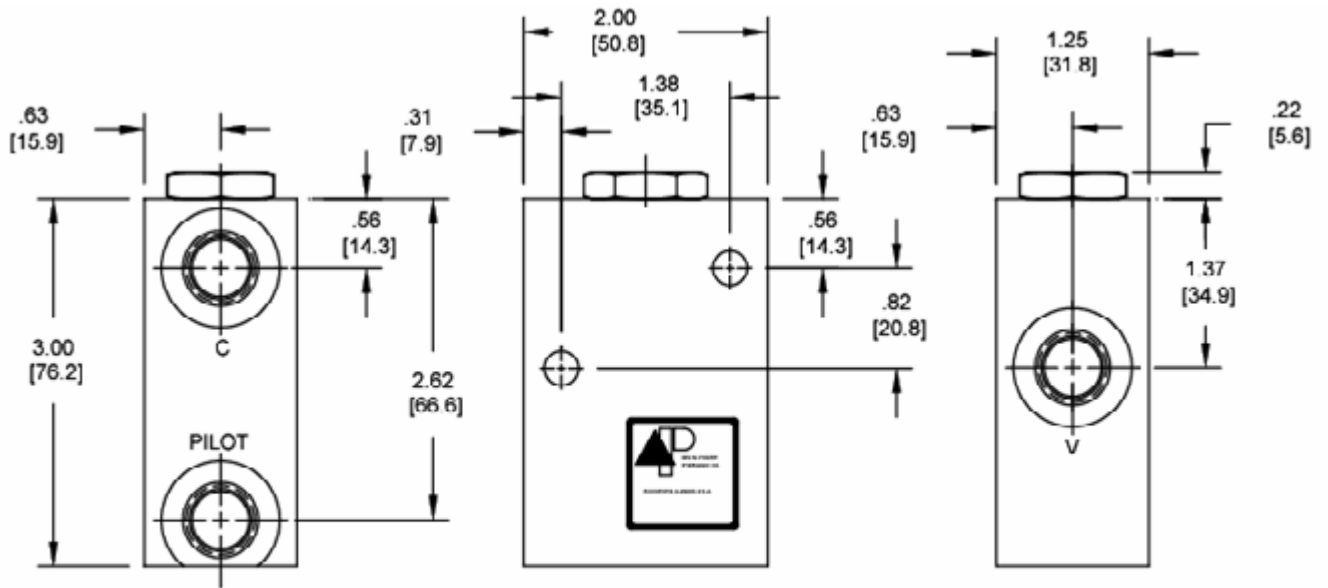
Nominal Flow	10 GPM (38 LPM)
Rated Operating Pressure	3500 PSI (241 bar)
Typical Internal Leakage (150 SSU)	0-5 drops/min
Viscosity Range	36 to 3000 SSU (3 to 647 cSt)
Filtration	30 micron nominal
Pilot Ratio	4:1
Media Operating Temp. Range	-40° to 250°F (-40° to 120°C)
Weight	1.0 lbs (.45 kg)
Operating Fluid Media	General Purpose Hydraulic Fluid
Cartridge Torque Requirements	25 ft-lbs (34 Nm)
Cartridge Crack Pressure	50 PSI (3.4 bar)

**TYPICAL SCHEMATIC**



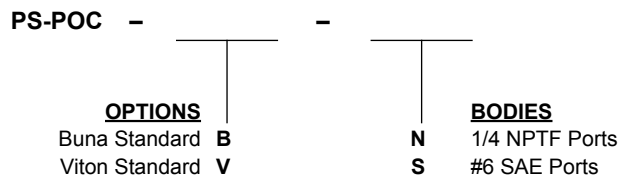
**WARNING:** the specifications/application data shown in our catalogs and data sheets are intended only as a general guide for the product described (herein). Any specific application should not be undertaken without independent study, evaluation, and testing for suitability.

DIMENSIONS

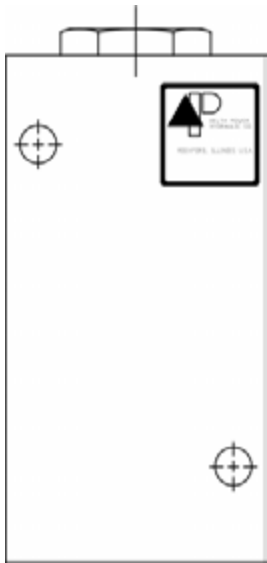


SAE PORTS SHOWN  
 MTG. HOLES ARE .28 DIA.  
 O-RINGS ARE STANDARD ON PISTON ASSEMBLY  
 CHECK VALVE USED IS A PB-CVC

ORDERING INFORMATION



**DS-POC SINGLE PILOT OPERATED CHECK VALVE**



**DESCRIPTION**

10 size, 7/8-14 thread, "Delta" series, pilot operated check valve.

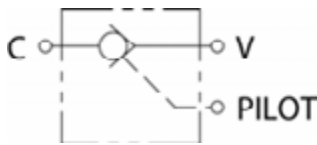
**OPERATION**

The DS-POC allows flow to pass from (V) to (C) and blocks flow from (C) to (V). When pilot pressure is applied to pilot port the valve allows flow from (C) to (V). The valve has a 4:1 pilot ratio, so at least .250 of the load pressure is required at the (PILOT) port to open the flow passage to allow flow from ports (C). The check is spring-biased at 90 PSI (6.2 bar) to assure holding in static or no-load conditions.

**FEATURES**

- Hardened internal parts for long life.
- Anodized aluminum body for corrosion protection.

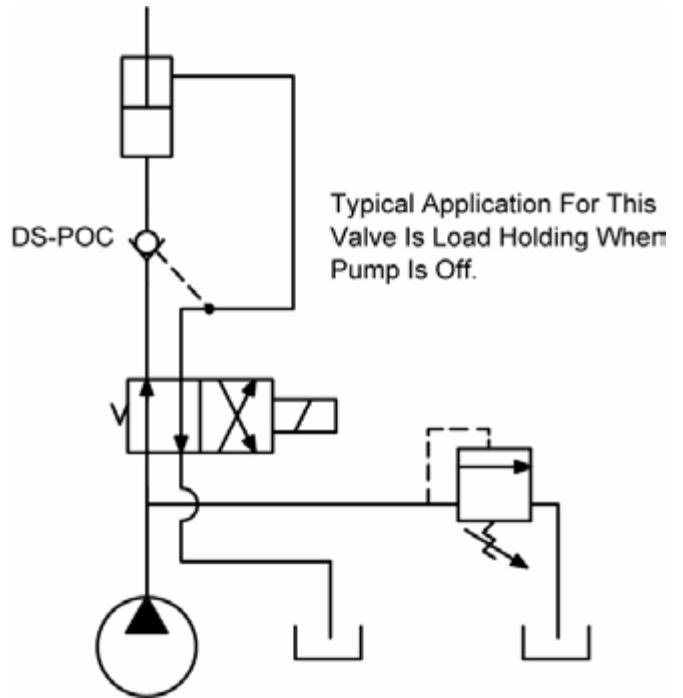
**HYDRAULIC SYMBOL**



**VALVE SPECIFICATIONS**

Nominal Flow	15 GPM (57 LPM)
Rated Operating Pressure	3500 PSI (241 bar)
Typical Internal Leakage (150 SSU)	0-5 drops/min
Viscosity Range	36 to 3000 SSU (3 to 647 cSt)
Filtration	30 micron nominal
Pilot Ratio	4:1
Media Operating Temp. Range	-40° to 250°F (-40° to 120°C)
Weight	1.1 lbs (.50 kg)
Operating Fluid Media	General Purpose Hydraulic Fluid
Cartridge Torque Requirements	30 ft-lbs (40.6 Nm)
Cartridge Crack Pressure	90 PSI (6.2 bar)

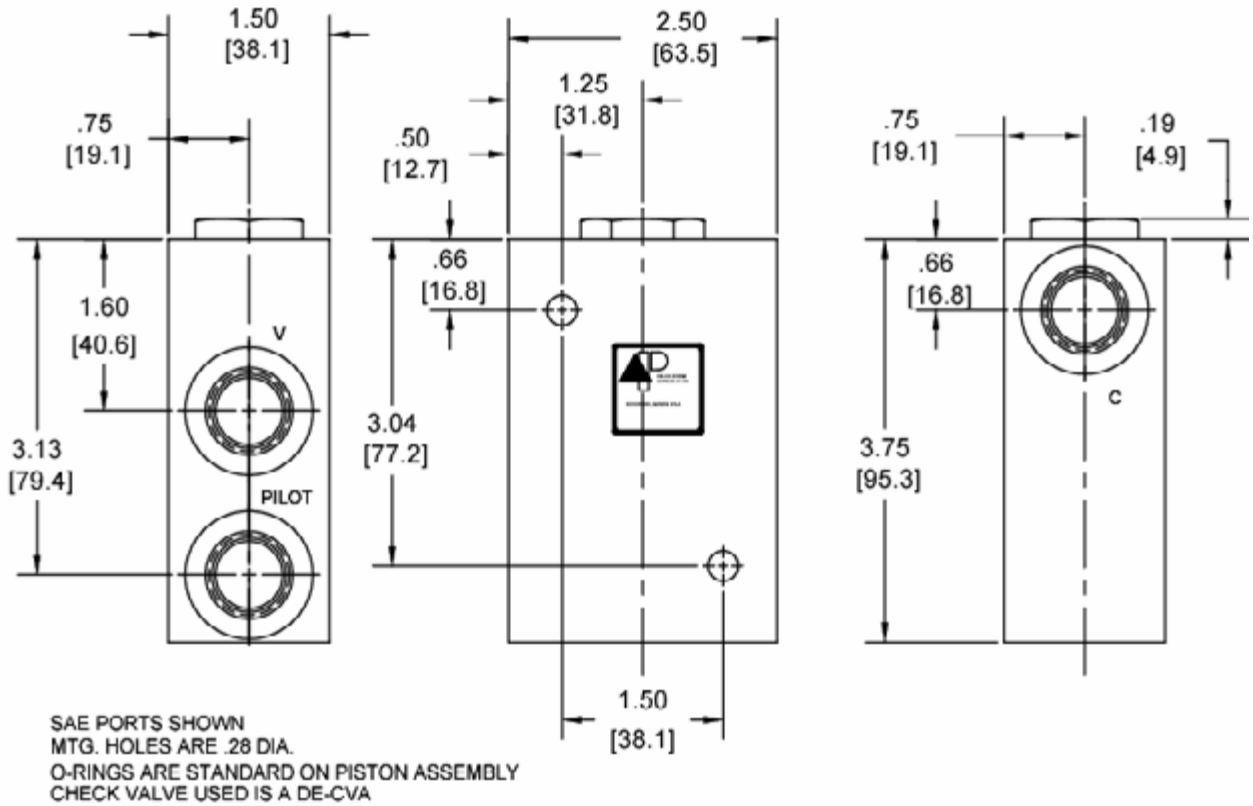
**TYPICAL SCHEMATIC**



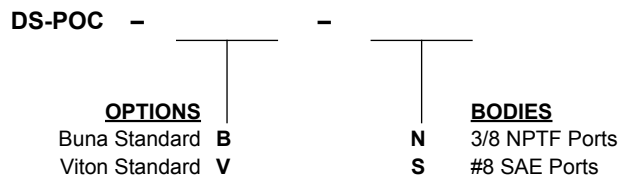
**WARNING:** the specifications/application data shown in our catalogs and data sheets are intended only as a general guide for the product described (herein). Any specific application should not be undertaken without independent study, evaluation, and testing for suitability.



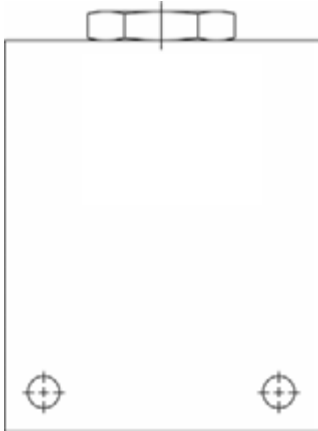
DIMENSIONS



ORDERING INFORMATION



**SS-POC** SINGLE PILOT OPERATED CHECK VALVE



**DESCRIPTION**

16 size, 1 5/16-12 thread, "Super" series, pilot operated check valve.

**OPERATION**

The SS-POC allows flow to pass from (V) to (C) and blocks flow from (C) to (V). When pilot pressure is applied to pilot port the valve allows flow from (C) to (V). The valve has a 3.7:1 pilot ratio, so at least .270 of the load pressure is required at the (PILOT) port to open the flow passage to allow flow from (C). The check is spring-biased at 50 PSI (3.4 bar) to assure holding in static or no-load conditions.

**FEATURES**

- Hardened internal parts for long life.
- Anodized aluminum body for corrosion protection.

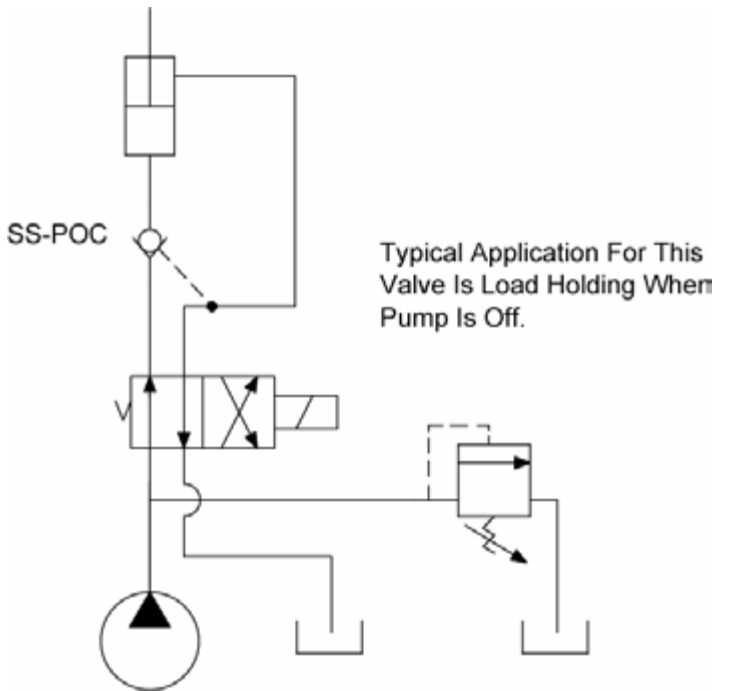
**HYDRAULIC SYMBOL**



**VALVE SPECIFICATIONS**

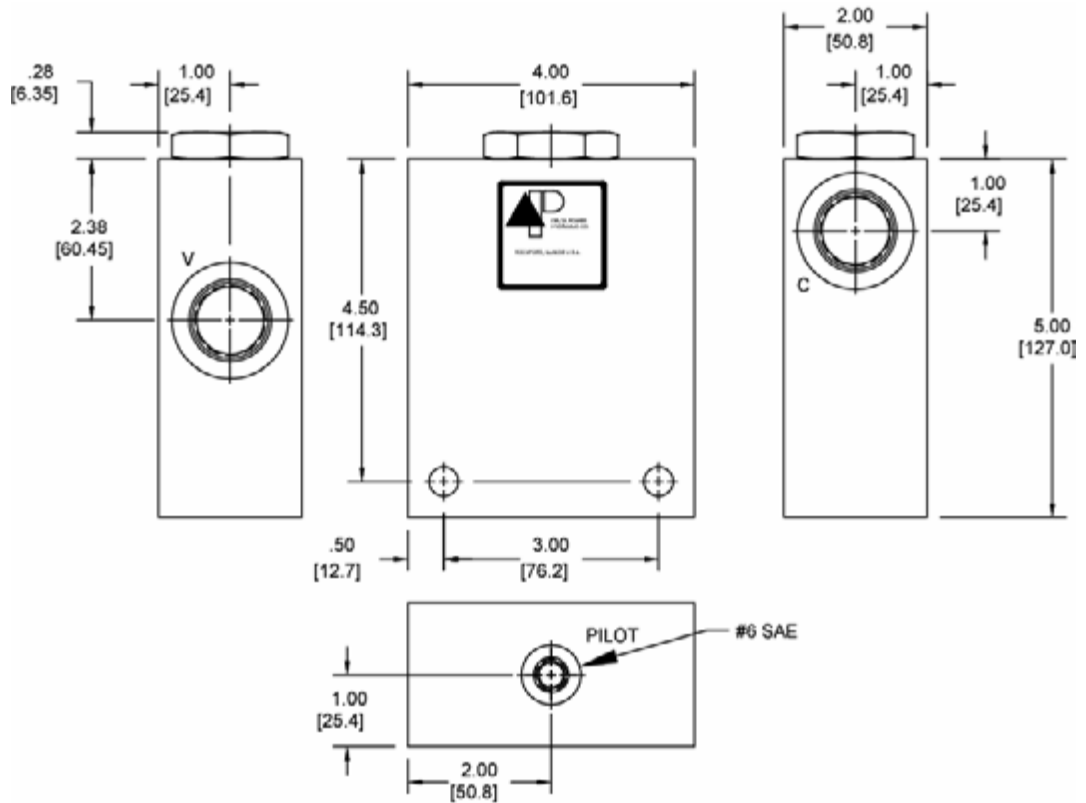
Nominal Flow	40 GPM (151 LPM)
Rated Operating Pressure	3500 PSI (241 bar)
Typical Internal Leakage (150 SSU)	0-5 drops/min
Viscosity Range	36 to 3000 SSU (3 to 647 cSt)
Filtration	30 micron nominal
Pilot Ratio	3.7:1
Media Operating Temp. Range	-40° to 250°F (-40° to 120°C)
Weight	4.3 lbs (2.0 kg)
Operating Fluid Media	General Purpose Hydraulic Fluid
Cartridge Torque Requirements	90 ft-lbs (122 Nm)
Cartridge Crack Pressure	50 PSI (3.4 bar)

**TYPICAL SCHEMATIC**



**WARNING:** the specifications/application data shown in our catalogs and data sheets are intended only as a general guide for the product described (herein). Any specific application should not be undertaken without independent study, evaluation, and testing for suitability.

**DIMENSIONS**



SAE PORTS SHOWN  
 MTG. HOLES ARE .41 DIA.  
 O-RINGS ARE STANDARD ON PISTON ASSEMBLY  
 CHECK VALVE USED IS A SJ-CVA

**ORDERING INFORMATION**

