

MIZERS

Pre-Engineered Circuit, Option MODEL AHZ2

Load Holding Solenoid Operated, RV w/Adj. Press. Comp. Flow Control, RV w/Fixed Press. Comp. Flow Control, Unloading w/flow control, Lift Circuit w/RV, RV w/Flow Control, Unloading w/ Fixed Press. Comp. Flow Control Speed Control

PRE-ENGINEERED CIRCUIT, OPTION MODEL BHZ4

Lift, Check, & Dump. Startup Circuit, Lift, Check & Dump w/RV

PRE-ENGINEERED CIRCUIT, OPTION MODEL CHZ6

Dual RV, Dump, Flow Divider, Motor Speed Control, Selector, Hydrostatic (Anti-Cav)

PRE-ENGINEERED CIRCUIT, OPTION MODEL DHZ8

NC Poppet Valve, Single RV, Needle Flow Control, Flow Control w/Free Flow Check, NO Spool valve, Crossover RV

PRE-ENGINEERED CIRCUIT, OPTION MODEL EHZ10

Adj. Flow Control NC Poppet Dual Speed Circuit, Adj. Press. Comp. Flow Control NC Poppet Dual Speed Circuit, Press. Comp. Flow Control & Check Valve, Adj. Press. Comp. Flow Control NO Poppet Dual Speed Circuit, Adj. Flow Control NO Poppet Dual Speed Circuit, Press. Comp Flow Control and Check, Adj. Flow Control NC Spool Valve Dual Speed Circuit

PRE-ENGINEERED CIRCUIT, OPTION MODEL FHZ12

Dual Sequence Valve Manifold

PRE-ENGINEERED CIRCUIT, OPTION MODEL GHZ14

Rectifier Circuit

PRE-ENGINEERED CIRCUIT, OPTION MODEL HHZ16

4w3p Open Center, 4w3p Closed Center

PRE-ENGINEERED CIRCUIT, OPTION MODEL IHZ18

3way valve, Manual Lift Check & Dump, NC Poppet Valve and RV, Lift Check & Dump, Pump Check & RV, Needle Flow Control & Check, NO Poppet & Check, NO Poppet & RV

PRE-ENGINEERED CIRCUIT, OPTION MODEL JHZ20

4w3p Tandem Center

PRE-ENGINEERED CIRCUIT, OPTION MODEL KHZ21

2 NC Poppet Valves, NO Poppet Valve & Needle Valve, 2 NC Poppet Valves, NC Poppet Valve & Adj.Press. Comp Flow Control

PRE-ENGINEERED CIRCUIT, OPTION MODEL LHZ22

Dual Counterbalance Circuit

PRE-ENGINEERED CIRCUIT, OPTION MODEL MHZ24

Single 4:1 PO Check Circuit

PRE-ENGINEERED CIRCUIT, OPTION MODEL N (BANJO BOLT)HZ26

Velocity Fuse, NC Poppet Valve, Adj. Press. Comp. Flow Control, Needle Valve, NO Spool Valve

PRE-ENGINEERED CIRCUIT, OPTION MODEL OHZ28

Single Counterbalance Circuit

PRE-ENGINEERED CIRCUIT, OPTION MODEL PHZ30

Lift Circuit w/Needle Valve & RV, Lift Circuit w/Press. Comp Flow Control & RV, Lift Circuit w/Bypass & Needle Valve, Lift Circuit w/Bypass & Press. Comp Flow Control

PRE-ENGINEERED CIRCUIT, OPTION MODEL QHZ32

Dual 3 way Valves

PRE-ENGINEERED CIRCUIT, OPTION MODEL RHZ34

Single RV Circuit

PRE-ENGINEERED CIRCUIT, OPTION MODEL SHZ36

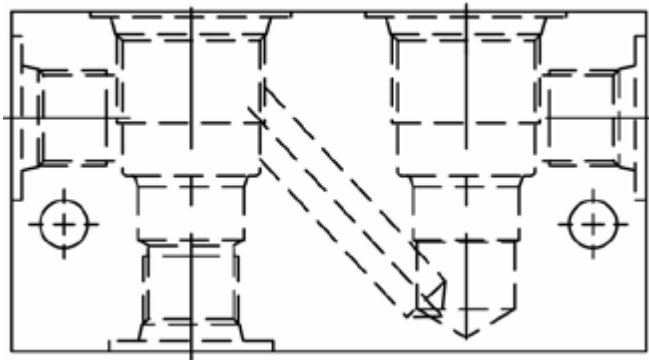
Crossover Relief, Mower Breakaway, Unloading & RV



WARNING: the specifications/application data shown in our catalogs and data sheets are intended only as a general guide for the product described (herein). Any specific application should not be undertaken without independent study, evaluation, and testing for suitability.

PRE-ENGINEERED CIRCUIT, OPTION **MODEL A***

BASE BODY - 20200001 = #6 SAE



BODY WEIGHT: .83 lbs (.37 kg)

DESCRIPTION

Pre-engineered circuit, option model A*.

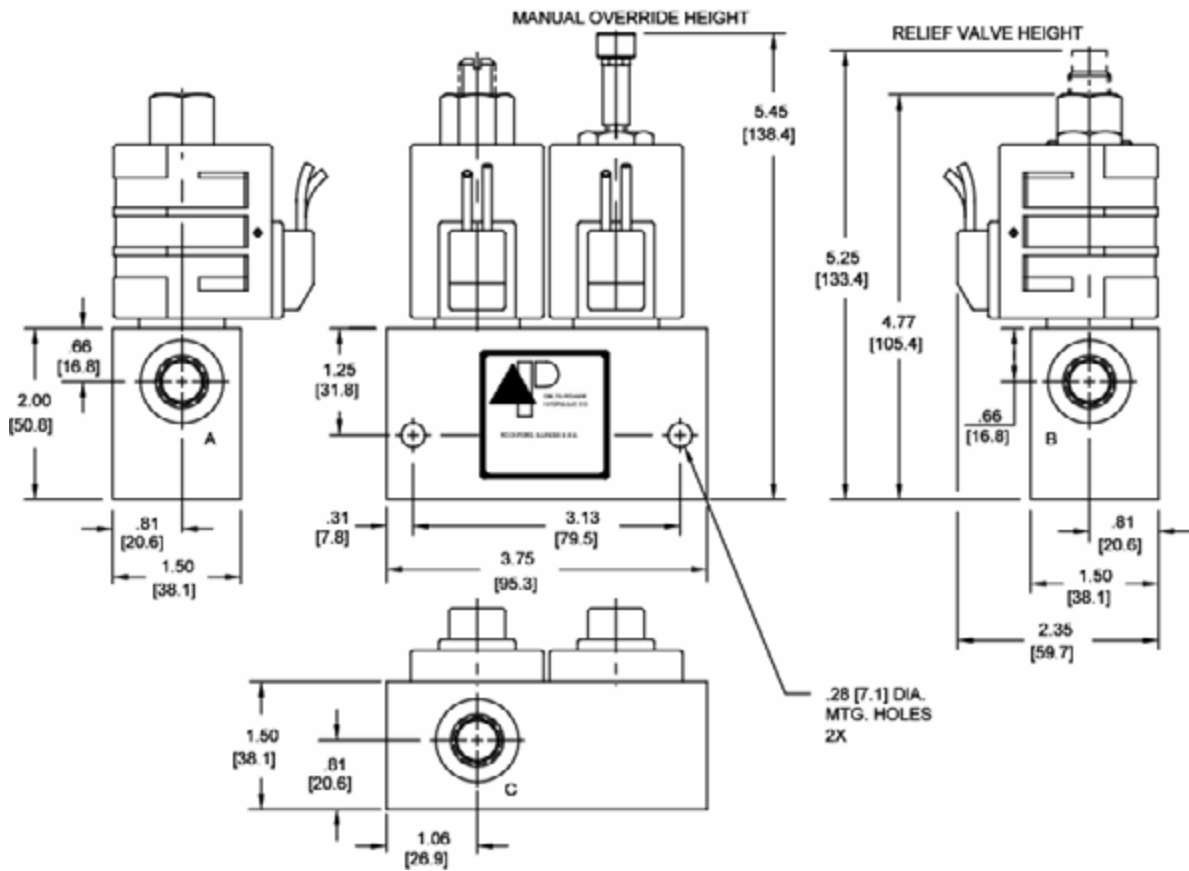
OPERATION

See options chart for specific operation.

VALVE SPECIFICATIONS

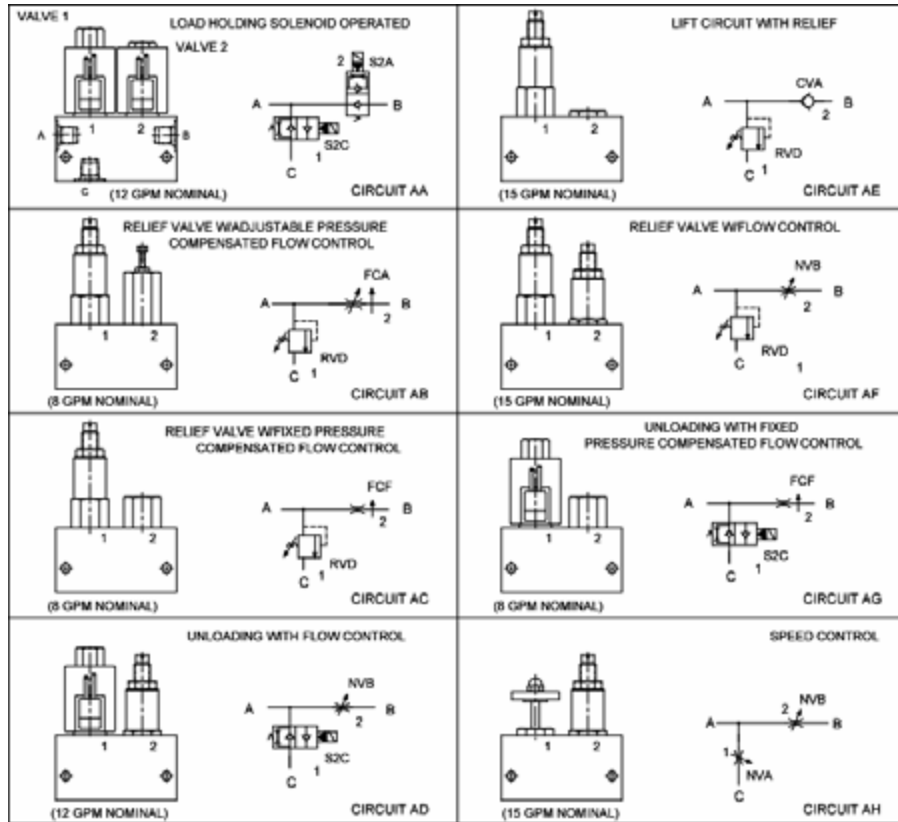
Nominal Flow	See Options Chart for Flow Range
Rated Operating Pressure	See Options Chart for Pres. Range
Viscosity Range	36 to 3000 SSU (3 to 647 cSt)
Filtration	30 micron nominal
Media Operating Temp. Range	-40° to 250°F (-40° to 120°C)
Operating Fluid Media	General Purpose Hydraulic Fluid
Cartridge Size	Delta Series 7/8-14 Thread
Cartridge Torque Requirements	30 ft-lbs (40.6 Nm)
Coil Torque Nut Requirements	4-6 ft-lbs (5.4-8.1 Nm)

DIMENSIONS



WARNING: the specifications/application data shown in our catalogs and data sheets are intended only as a general guide for the product described (herein). Any specific application should not be undertaken without independent study, evaluation, and testing for suitability.

OPTIONS CHART



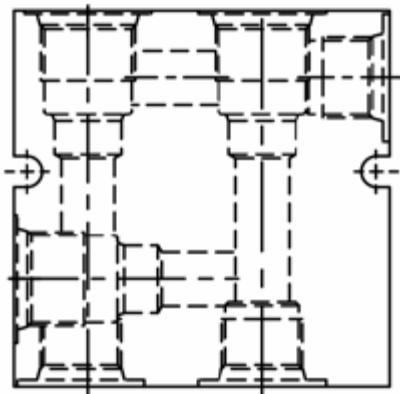
ORDERING INFORMATION

Approximate Coil Weight: .74 lbs (.33 kg)

CIRCUITS		OPTIONS		VOLTAGE		VALVE 2		PRESSURE	
AA	Buna Standard	00	06	6 VDC	01	.5-1 GPM	02	20-500 PSI	
AB	Viton Standard	V0	12	12 VDC	02	1-2 GPM	15	200-1500 PSI	
AC	Manual Override	0M	24	24 VDC	04	2-4 GPM	30	1500-3000 PSI	
AD			36	36 VDC	08	4-8 GPM	40	2500-4000 PSI	
AE			48	48 VDC	FLOW CONTROL		RELIEF VALVE		
AF			25	25 VAC					
AG			11	120 VAC					
AH			22	220 VAC					
				44	440 VAC				
<u>"D" COIL TERMINATION</u> (All DC Except as Noted)						VALVE 1			
						FLOW		PRESSURE	
DL	Double Lead	HC	DIN 43650 (Hirschmann) - (AC&DC)			01	.5-1 GPM	02	20-500 PSI
DT	Deutsch on Leads DT04-2P	CL	Conduit Lead - (AC Only)			02	1-2 GPM	15	200-1500 PSI
ML	Metri-Pack on Leads	DI	Deutsch - Integral DT04-2P			04	2-4 GPM	30	1500-3000 PSI
PL	Packard on Leads					08	4-8 GPM	40	2500-4000 PSI
WL	Weatherpack on Leads					FLOW CONTROL		RELIEF VALVE	
SS	Single Spade								
DS	Double Spade								
<u>IMMERSION PROOF "D" TYPE</u>									
IA	"I" Coil AMP Superseal - Integral								
ID	"I" Coil Deutsch - Integral DT04-2P								
IJ	"I" Coil AMP Jr. Timer - Integral								
IM	"I" Coil Metri-Pack - Integral								

PRE-ENGINEERED CIRCUIT, OPTION **MODEL B***

BASE BODY - 20200002 = #8 SAE



BODY WEIGHT: 1.2 lbs (.54 kg)

DESCRIPTION

Pre-engineered circuit, option model B*.

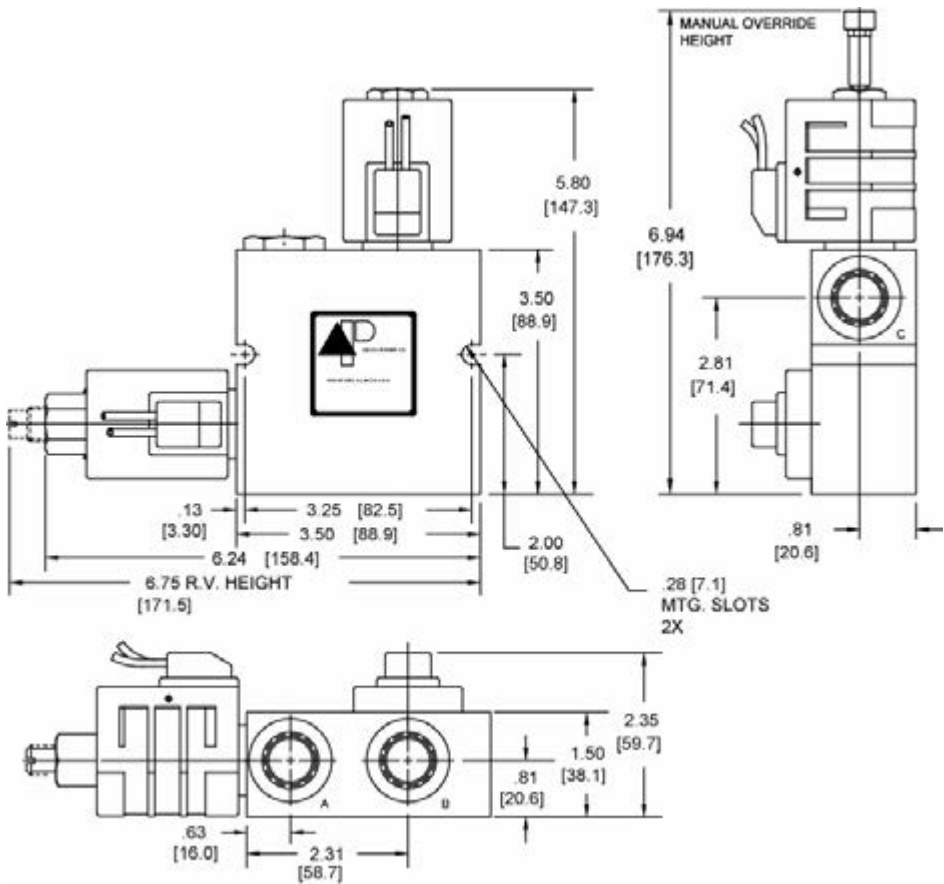
OPERATION

See options chart for specific operation.

VALVE SPECIFICATIONS

Nominal Flow	12 GPM (48 LPM)
Rated Operating Pressure	3500 PSI (241 bar)
Viscosity Range	36 to 3000 SSU (3 to 647 cSt)
Filtration	30 micron nominal
Media Operating Temp. Range	-40° to 250°F (-40° to 120°C)
Operating Fluid Media	General Purpose Hydraulic Fluid
Cartridge Size	Delta Series 7/8-14 Thread
Cartridge Torque Requirements	30 ft-lbs (40.6 Nm)
Coil Torque Nut Requirements	4-6 ft-lbs (5.4-8.1 Nm)

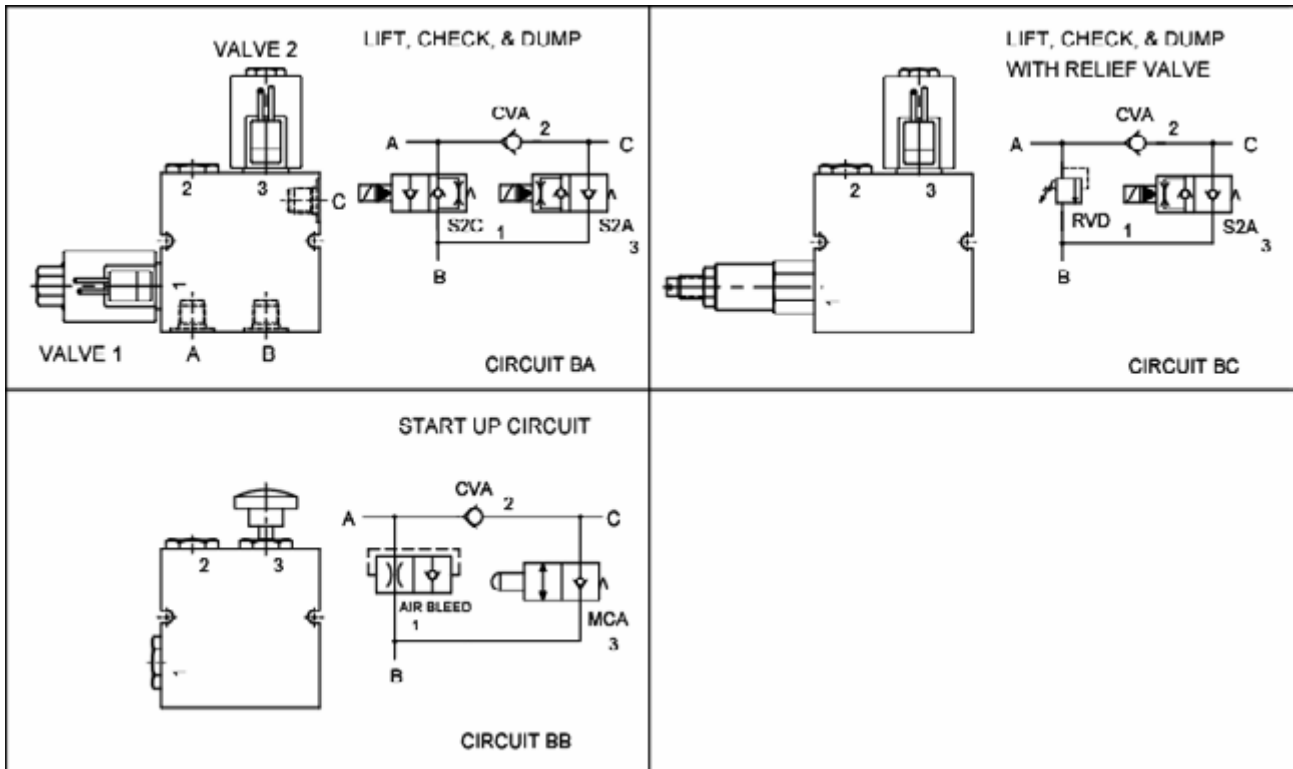
DIMENSIONS



WARNING: the specifications/application data shown in our catalogs and data sheets are intended only as a general guide for the product described (herein). Any specific application should not be undertaken without independent study, evaluation, and testing for suitability.

W/ 50/2022

OPTIONS CHART



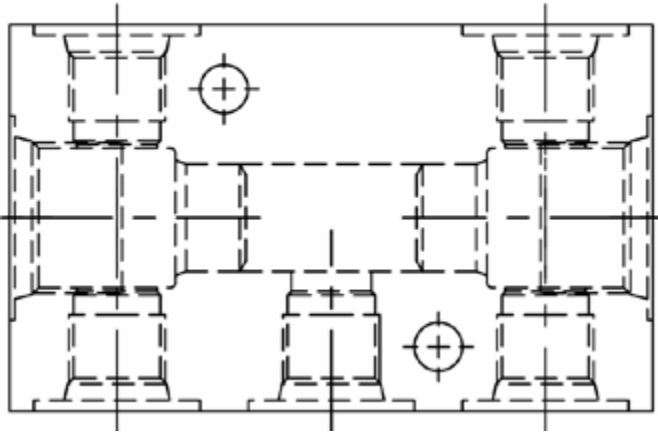
ORDERING INFORMATION

Approximate Coil Weight: .74 lbs (.33 kg)

<u>CIRCUITS</u>		<u>OPTIONS</u>		<u>VOLTAGE</u>		<u>VALVE 2</u>		<u>VALVE 1</u>	
BA	Buna Standard	00	06	6 VDC	01	.5-1 GPM	02	20-500 PSI	
BB	Viton Standard	V0	12	12 VDC	02	1-2 GPM	15	200-1500 PSI	
BC	Manual Override	0M	24	24 VDC	04	2-4 GPM	30	1500-3000 PSI	
			36	36 VDC	08	4-8 GPM	40	2500-4000 PSI	
			48	48 VDC	FLOW CONTROL		RELIEF VALVE		
			25	25 VAC					
			11	120 VAC					
			22	220 VAC					
			44	440 VAC					
<u>"D" COIL TERMINATION</u> (All DC Except as Noted)				<u>IMMERSION PROOF "D" TYPE</u>		FOR SPECIAL PRESET VALUES ON VALVES, CONSULT FACTORY			
DL	Double Lead	HC	DIN 43650 (Hirschmann) - (AC&DC)						
DT	Deutsch on Leads DT04-2P	CL	Conduit Lead - (AC Only)						
ML	Metri-Pack on Leads	DI	Deutsch - Integral DT04-2P						
PL	Packard on Leads								
WL	Weatherpack on Leads								
SS	Single Spade	IA	"I" Coil AMP Superseal - Integral						
DS	Double Spade	ID	"I" Coil Deutsch - Integral DT04-2P						
		IJ	"I" Coil AMP Jr. Timer - Integral						
		IM	"I" Coil Metri-Pack - Integral						

PRE-ENGINEERED CIRCUIT, OPTION **MODEL C***

BASE BODY - 20200003 = #6 SAE



BODY WEIGHT: .83 lbs (.37 kg)

DESCRIPTION

Pre-engineered circuit, option model C*.

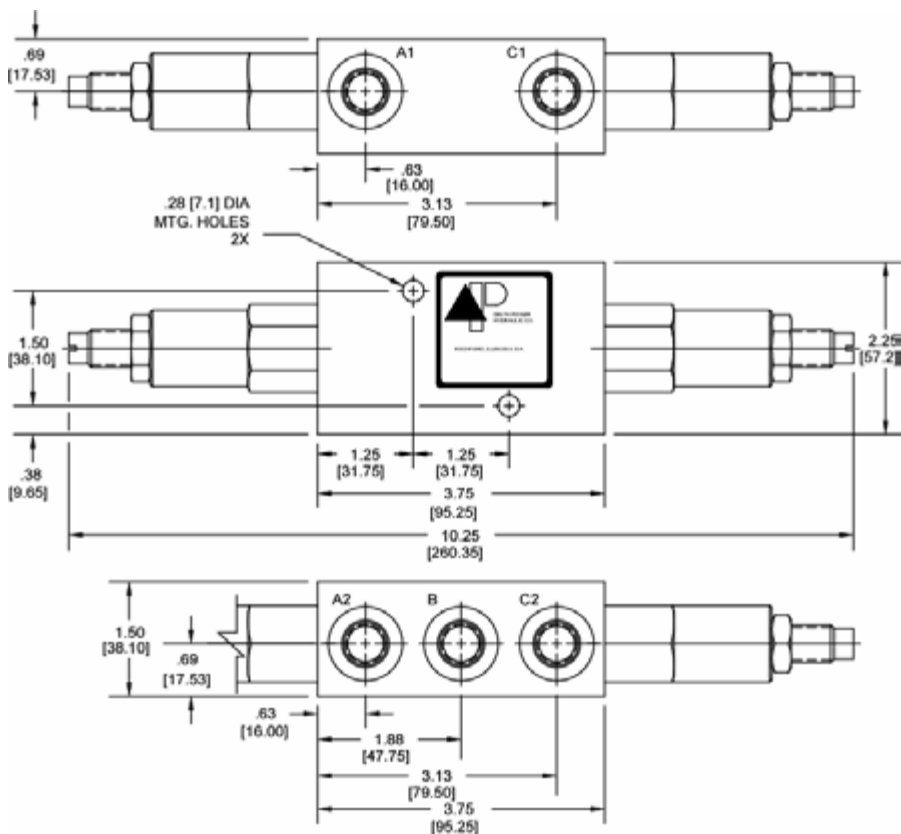
OPERATION

See options chart for specific operation.

VALVE SPECIFICATIONS

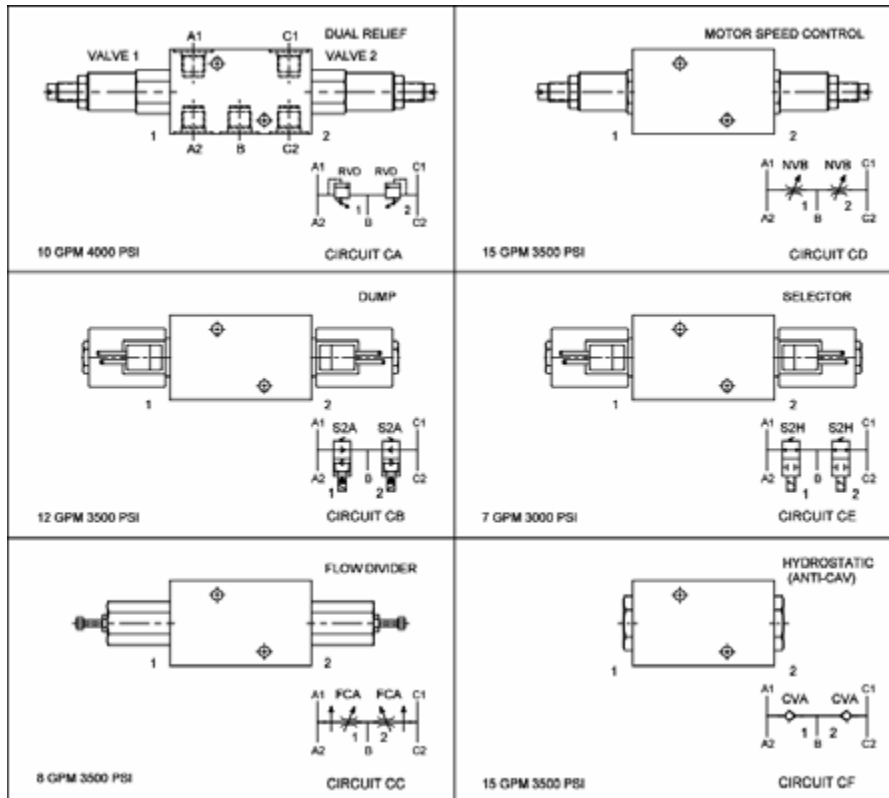
Nominal Flow	See Options Chart for Flow Range
Rated Operating Pressure	See Options Chart for Pres. Range
Viscosity Range	36 to 3000 SSU (3 to 647 cSt)
Filtration	30 micron nominal
Media Operating Temp. Range	-40° to 250°F (-40° to 120°C)
Operating Fluid Media	General Purpose Hydraulic Fluid
Cartridge Size	Delta Series 7/8-14 Thread
Cartridge Torque Requirements	30 ft-lbs (40.6 Nm)
Coil Torque Nut Requirements	4-6 ft-lbs (5.4-8.1 Nm)

DIMENSIONS



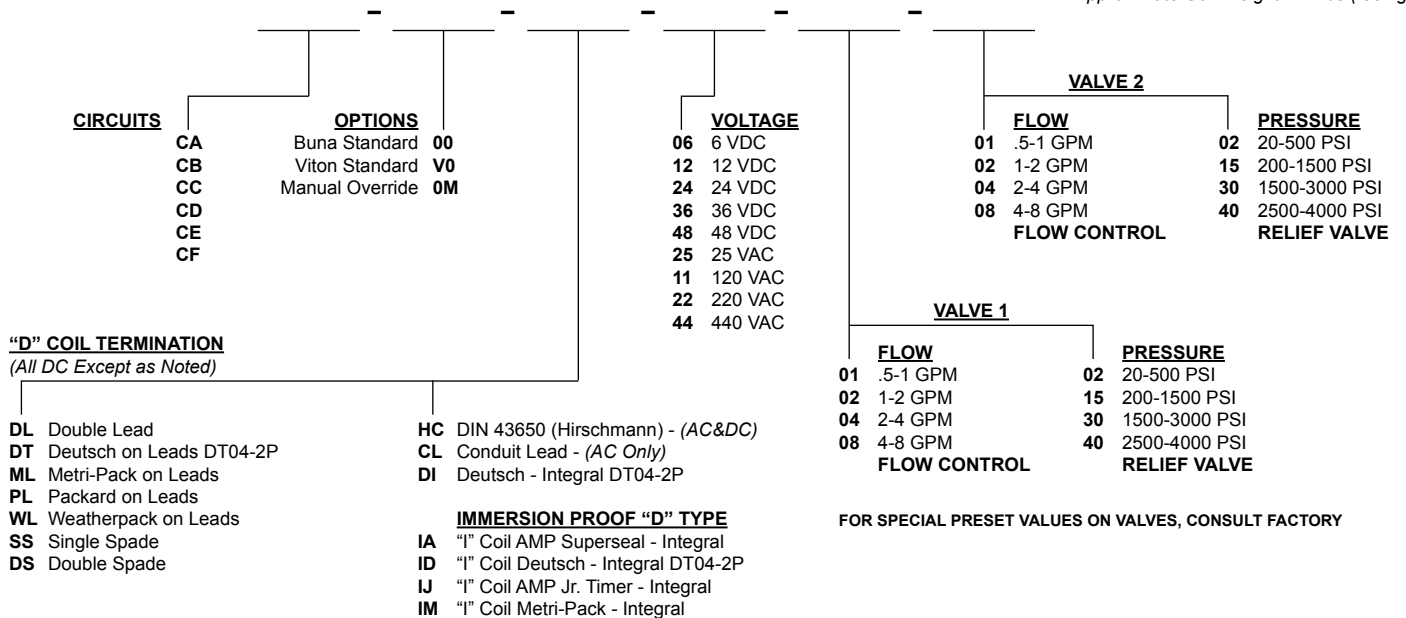
WARNING: the specifications/application data shown in our catalogs and data sheets are intended only as a general guide for the product described (herein). Any specific application should not be undertaken without independent study, evaluation, and testing for suitability.

OPTIONS CHART



ORDERING INFORMATION

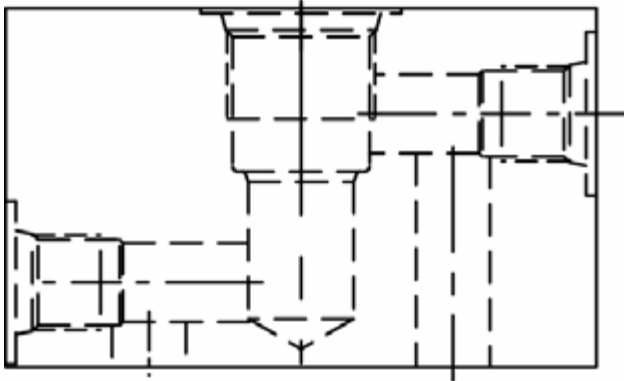
Approximate Coil Weight: .74 lbs (.33 kg)



WARNING: the specifications/application data shown in our catalogs and data sheets are intended only as a general guide for the product described (herein). Any specific application should not be undertaken without independent study, evaluation, and testing for suitability.

PRE-ENGINEERED CIRCUIT, OPTION **MODEL D***

BASE BODY - 20200004 = #6 SAE



BODY WEIGHT: .83 lbs (.37 kg)

DESCRIPTION

Pre-engineered circuit, option model D*.

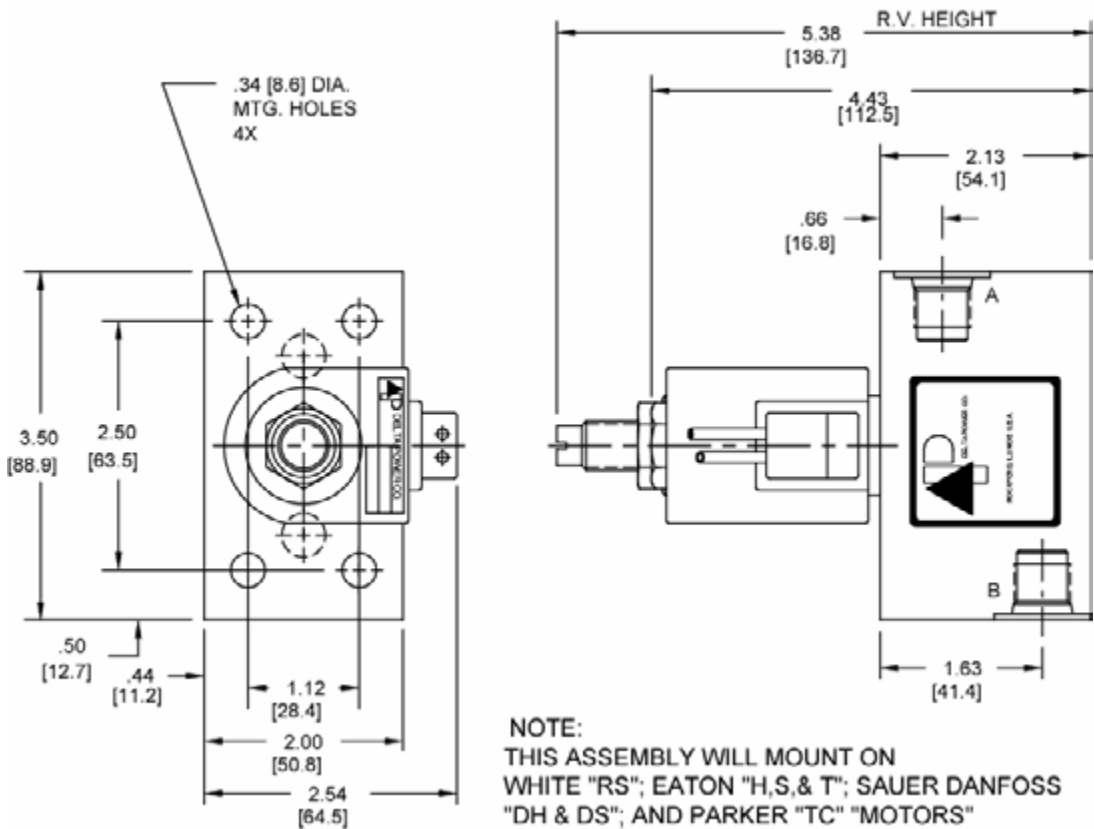
OPERATION

See options chart for specific operation.

VALVE SPECIFICATIONS

Nominal Flow	See Options Chart for Flow Range
Rated Operating Pressure	See Options Chart for Pres. Range
Viscosity Range	36 to 3000 SSU (3 to 647 cSt)
Filtration	30 micron nominal
Media Operating Temp. Range	-40° to 250°F (-40° to 120°C)
Operating Fluid Media	General Purpose Hydraulic Fluid
Cartridge Size	Delta Series 7/8-14 Thread
Cartridge Torque Requirements	30 ft-lbs (40.6 Nm)
Coil Torque Nut Requirements	4-6 ft-lbs (5.4-8.1 Nm)

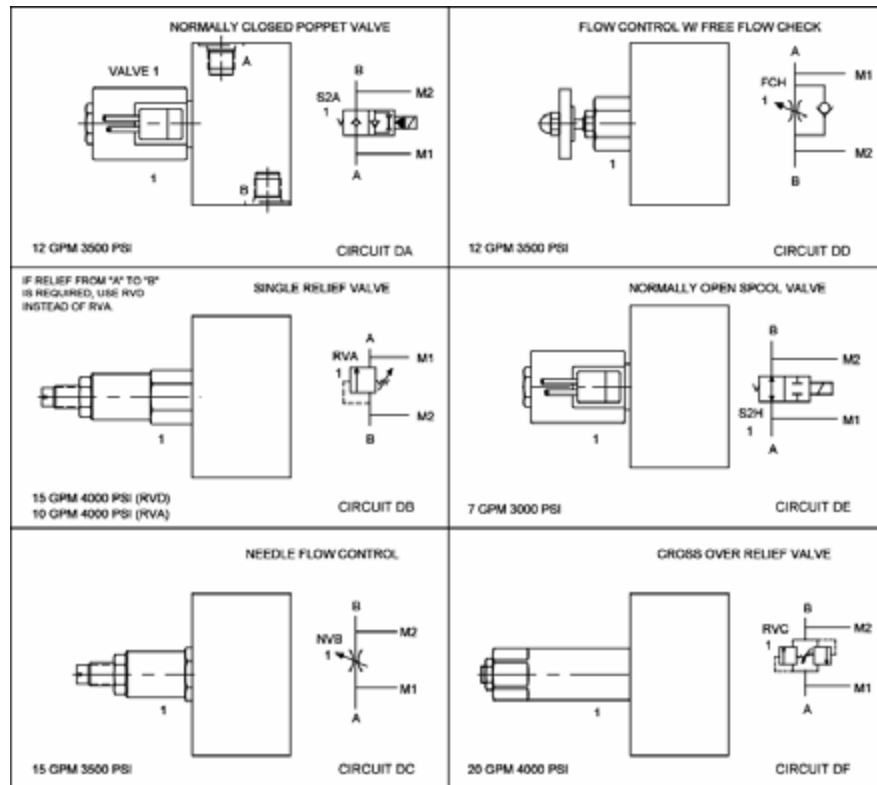
DIMENSIONS



NOTE:
THIS ASSEMBLY WILL MOUNT ON
WHITE "RS"; EATON "H,S,& T"; SAUER DANFOSS
"DH & DS"; AND PARKER "TC" "MOTORS"

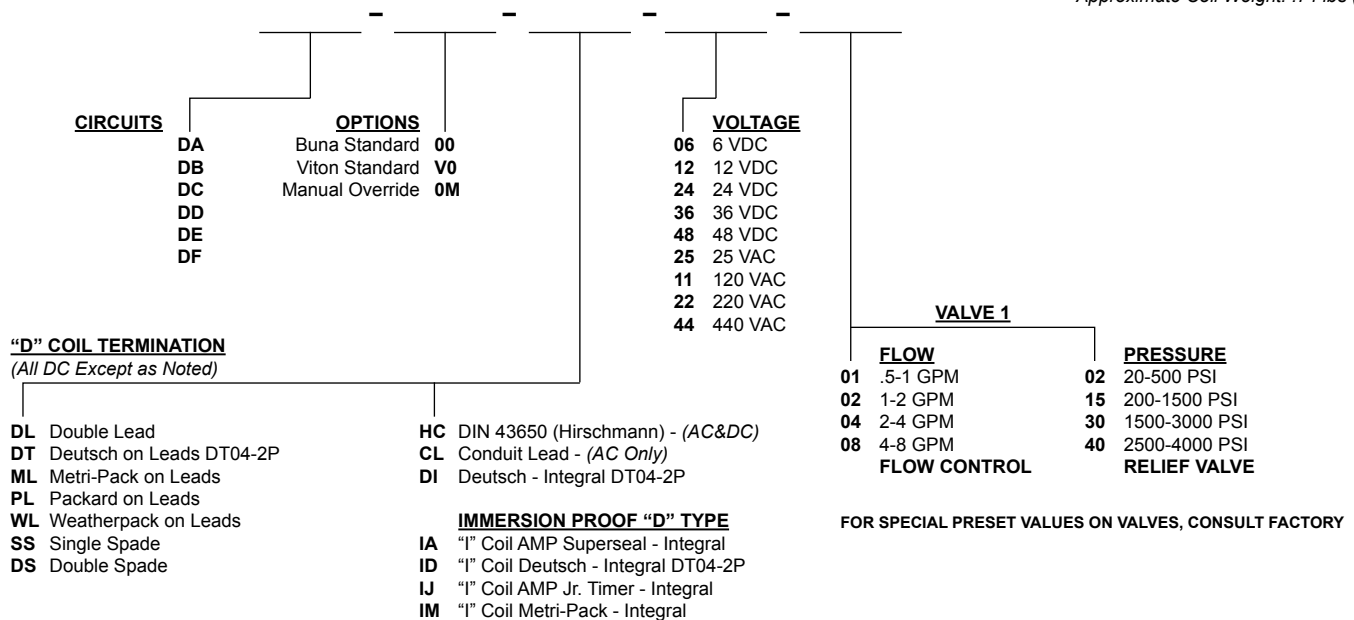
WARNING: the specifications/application data shown in our catalogs and data sheets are intended only as a general guide for the product described (herein). Any specific application should not be undertaken without independent study, evaluation, and testing for suitability.

OPTIONS CHART



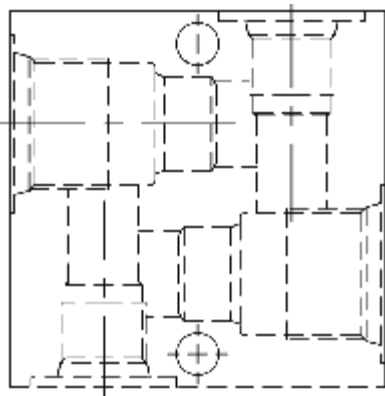
ORDERING INFORMATION

Approximate Coil Weight: .74 lbs (.33 kg)



PRE-ENGINEERED CIRCUIT, OPTION **MODEL E***

BASE BODY - 20200005 = #6 SAE



BODY WEIGHT: .75 lbs (.34 kg)

DESCRIPTION

Pre-engineered circuit, option model E*.

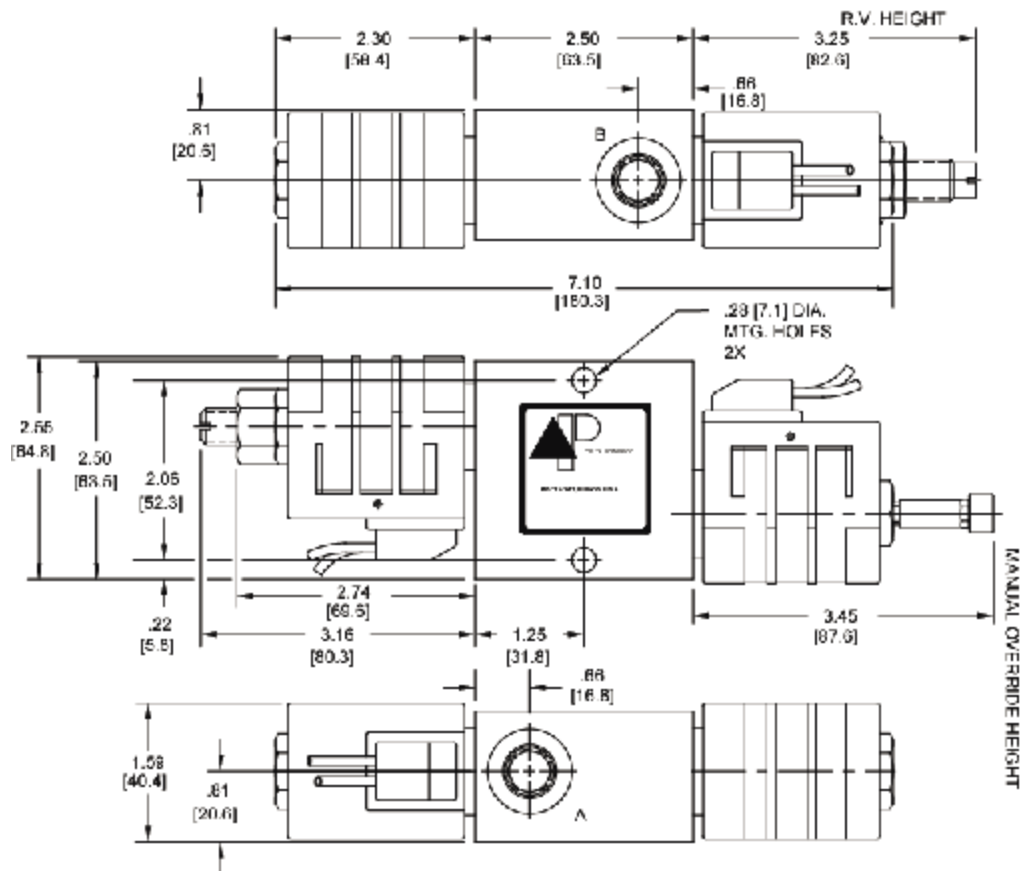
OPERATION

See options chart for specific operation.

VALVE SPECIFICATIONS

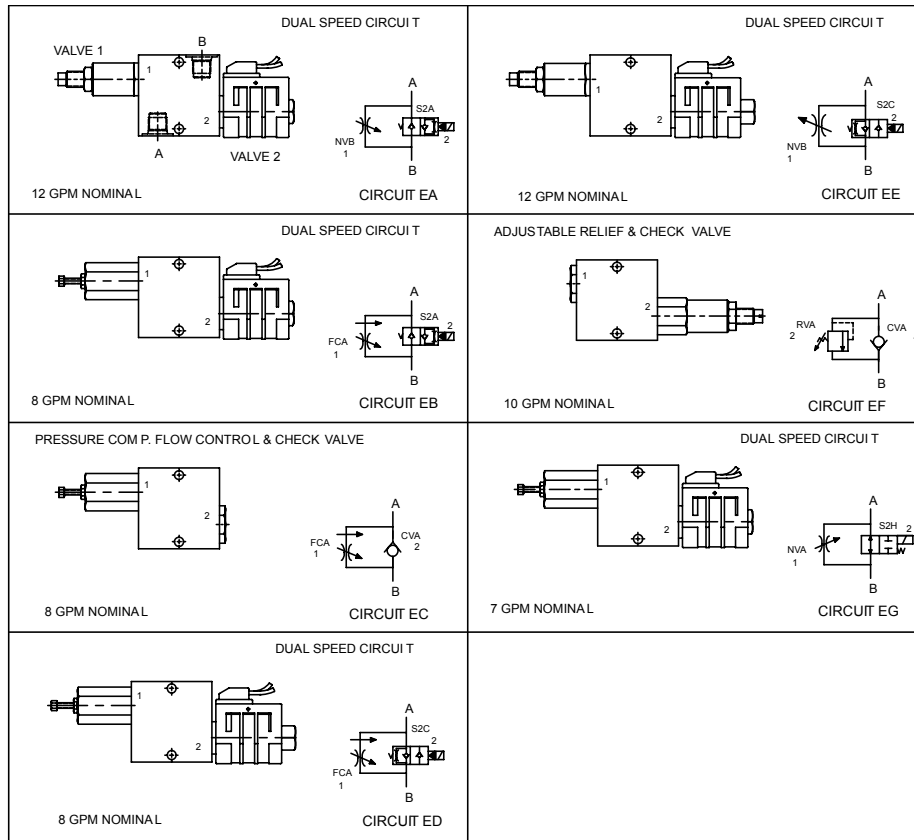
Nominal Flow	See Options Chart for Flow Range
Rated Operating Pressure	3500 PSI (241 bar)
Viscosity Range	36 to 3000 SSU (3 to 647 cSt)
Filtration	30 micron nominal
Media Operating Temp. Range	-40° to 250°F (-40° to 120°C)
Operating Fluid Media	General Purpose Hydraulic Fluid
Cartridge Size	Delta Series 7/8-14 Thread
Cartridge Torque Requirements	30 ft-lbs (40.6 Nm)
Coil Torque Nut Requirements	4-6 ft-lbs (5.4-8.1 Nm)

DIMENSIONS



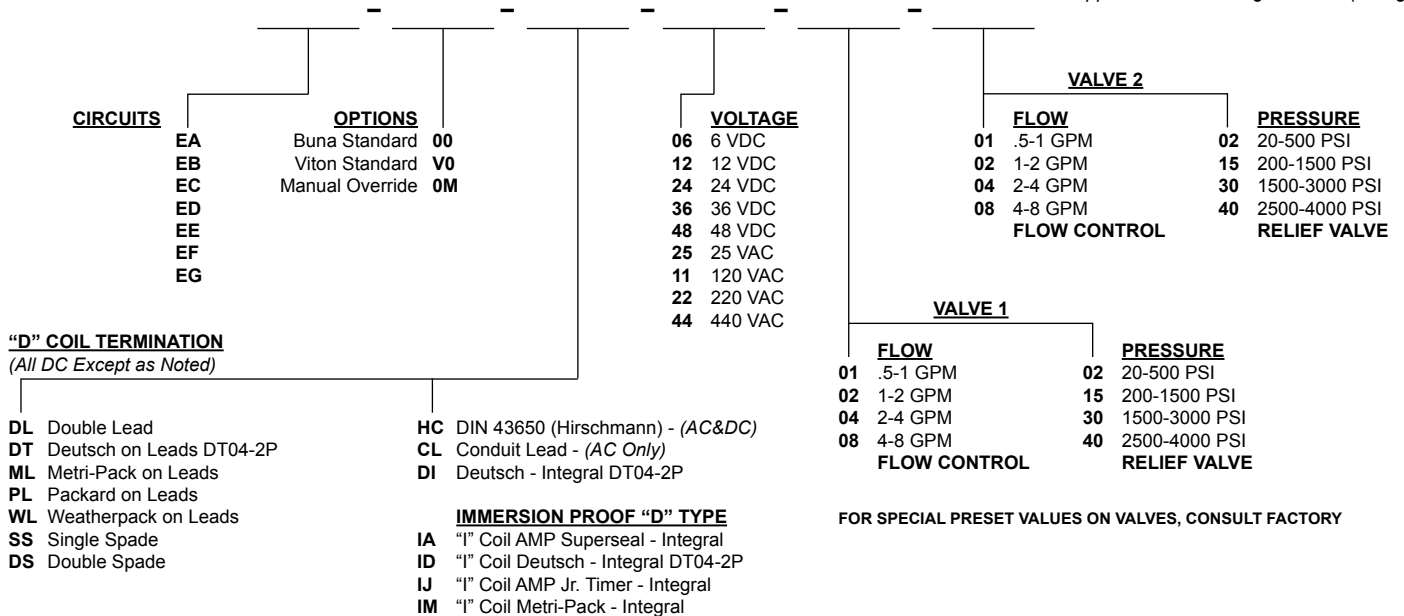
WARNING: the specifications/application data shown in our catalogs and data sheets are intended only as a general guide for the product described (herein). Any specific application should not be undertaken without independent study, evaluation, and testing for suitability.

OPTIONS CHART



ORDERING INFORMATION

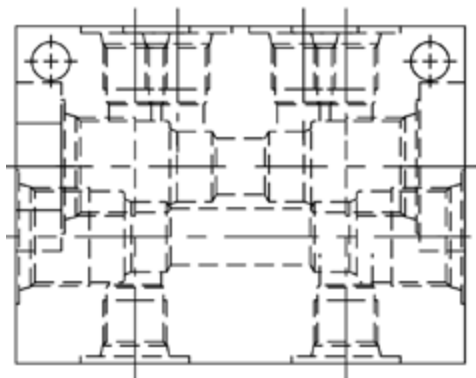
Approximate Coil Weight: .74 lbs (.33 kg)



WARNING: the specifications/application data shown in our catalogs and data sheets are intended only as a general guide for the product described (herein). Any specific application should not be undertaken without independent study, evaluation, and testing for suitability.

PRE-ENGINEERED CIRCUIT, OPTION **MODEL F***

BASE BODY - 20200006 = #6 SAE



BODY WEIGHT: 1.5 lbs (.68 kg)

DESCRIPTION

Pre-engineered circuit, option model F*.

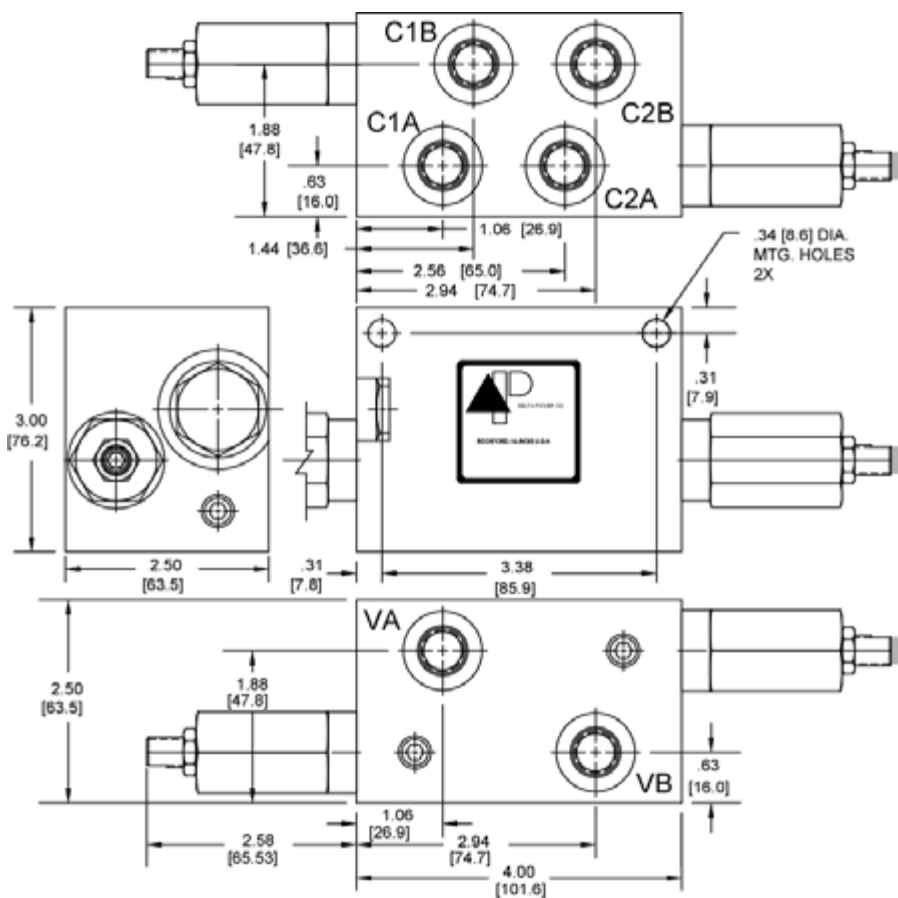
OPERATION

See options chart for specific operation.

VALVE SPECIFICATIONS

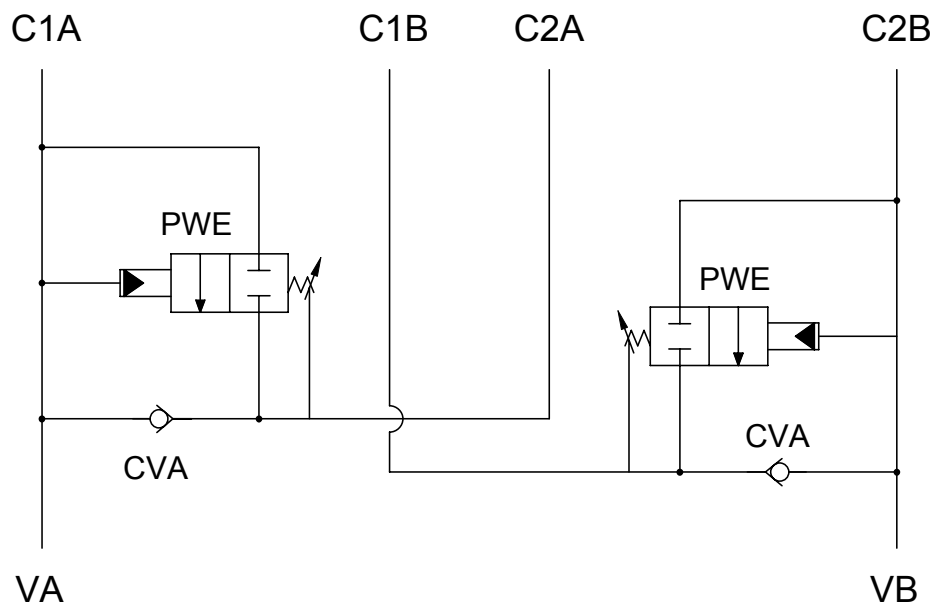
Nominal Flow	9 GPM (34 LPM)
Rated Operating Pressure	50-1500 PSI (4-103 bar)
Viscosity Range	36 to 3000 SSU (3 to 647 cSt)
Filtration	30 micron nominal
Media Operating Temp. Range	-40° to 250°F (-40° to 120°C)
Operating Fluid Media	General Purpose Hydraulic Fluid
Cartridge Size	Delta Series 7/8-14 Thread
Cartridge Torque Requirements	30 ft-lbs (40.6 Nm)

DIMENSIONS



WARNING: the specifications/application data shown in our catalogs and data sheets are intended only as a general guide for the product described (herein). Any specific application should not be undertaken without independent study, evaluation, and testing for suitability.

TYPICAL SCHEMATIC



DUAL SEQUENCE VALVE MANIFOLD
AUTOMATICALLY CONTROLS THE
SEQUENCING OF TWO CYLINDERS.
CIRCUIT FA

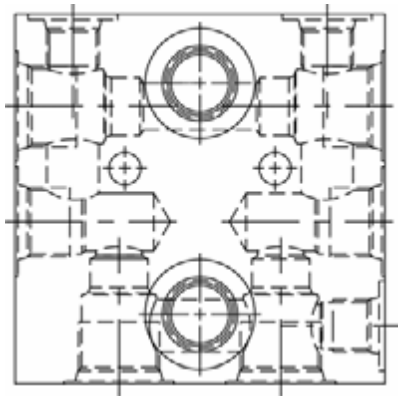
ORDERING INFORMATION

CIRCUITS		OPTIONS		VALVE 1 PRESSURE		VALVE 2 PRESSURE	
FA		Buna Standard	00	04	50-425 PSI	04	50-425 PSI
		Viton Standard	V0	15	400-1500 PSI	15	400-1500 PSI

FOR SPECIAL PRESET VALUES ON VALVES, CONSULT FACTORY

PRE-ENGINEERED CIRCUIT, OPTION **MODEL G***

BASE BODY - 20200007 = #8 SAE



BODY WEIGHT: 1.36 lbs (.62 kg)

DESCRIPTION

Pre-engineered circuit, option model G*.

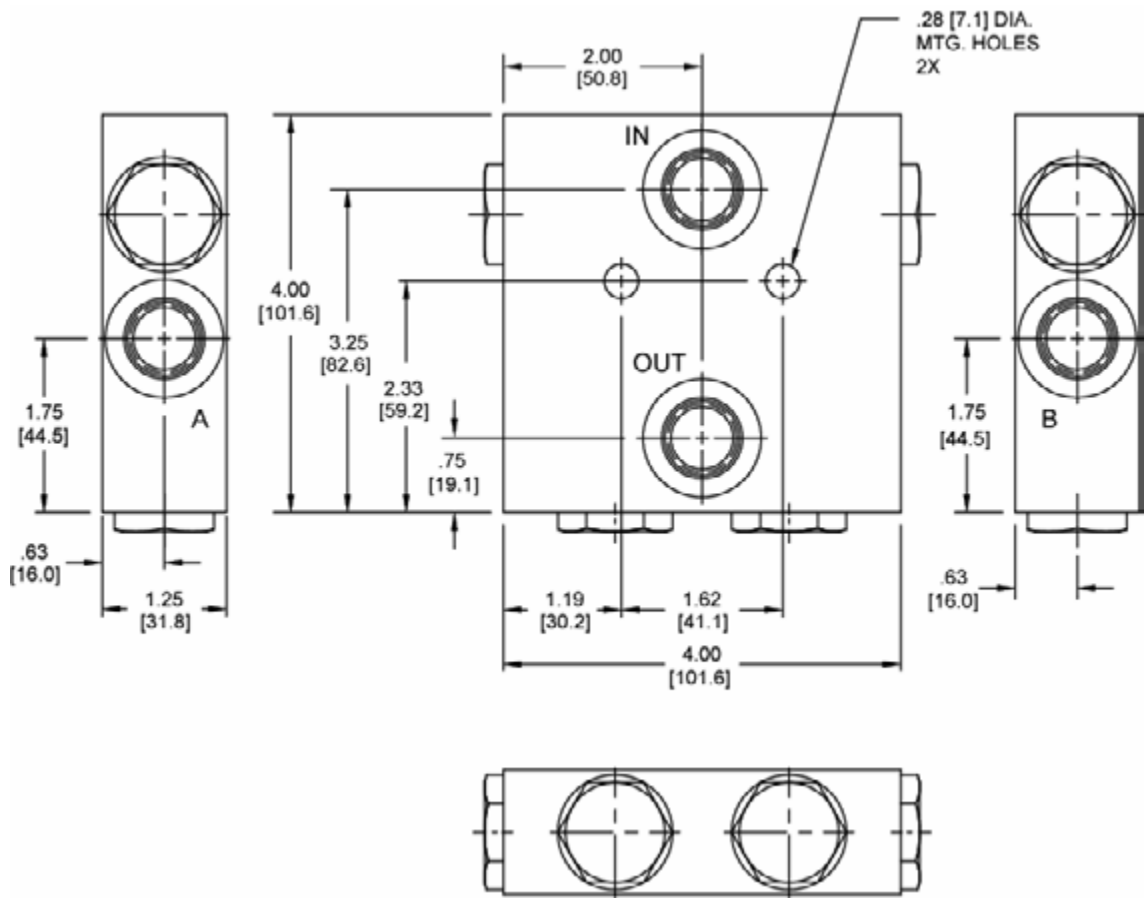
OPERATION

See options chart for specific operation.

VALVE SPECIFICATIONS

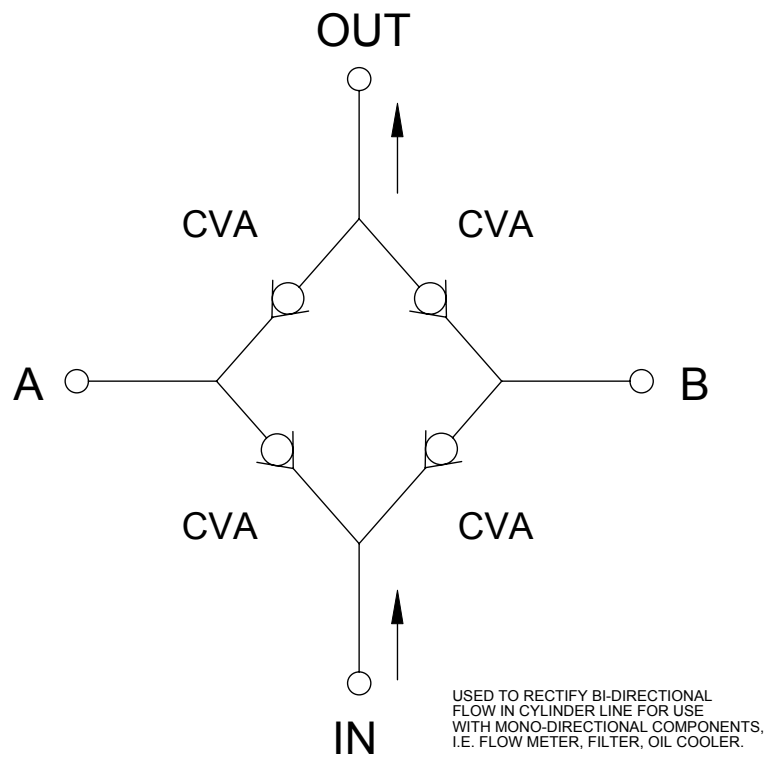
Nominal Flow	15 GPM (57 LPM)
Rated Operating Pressure	3500 PSI (241 bar)
Viscosity Range	36 to 3000 SSU (3 to 647 cSt)
Filtration	30 micron nominal
Media Operating Temp. Range	-40° to 250°F (-40° to 120°C)
Operating Fluid Media	General Purpose Hydraulic Fluid
Cartridge Size	Delta Series 7/8-14 Thread
Cartridge Torque Requirements	30 ft-lbs (40.6 Nm)

DIMENSIONS



WARNING: the specifications/application data shown in our catalogs and data sheets are intended only as a general guide for the product described (herein). Any specific application should not be undertaken without independent study, evaluation, and testing for suitability.

TYPICAL SCHEMATIC



CIRCUIT GA RECTIFIER CIRCUIT

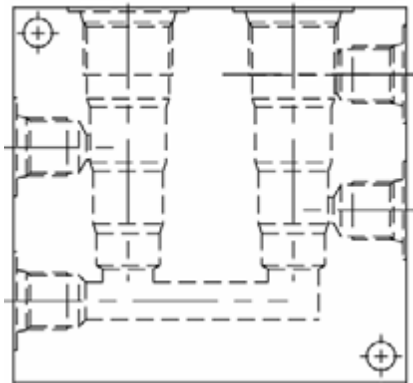
ORDERING INFORMATION

CIRCUITS		OPTIONS		CRACK PRESSURE	
GA					
		Buna Standard	00	10	10 PSI
		Viton Standard	V0		

WARNING: the specifications/application data shown in our catalogs and data sheets are intended only as a general guide for the product described (herein). Any specific application should not be undertaken without independent study, evaluation, and testing for suitability.

PRE-ENGINEERED CIRCUIT, OPTION **MODEL H***

BASE BODY - 20200008 = #6 SAE



BODY WEIGHT: 1.50 lbs (.68 kg)

DESCRIPTION

Pre-engineered circuit, option model H*.

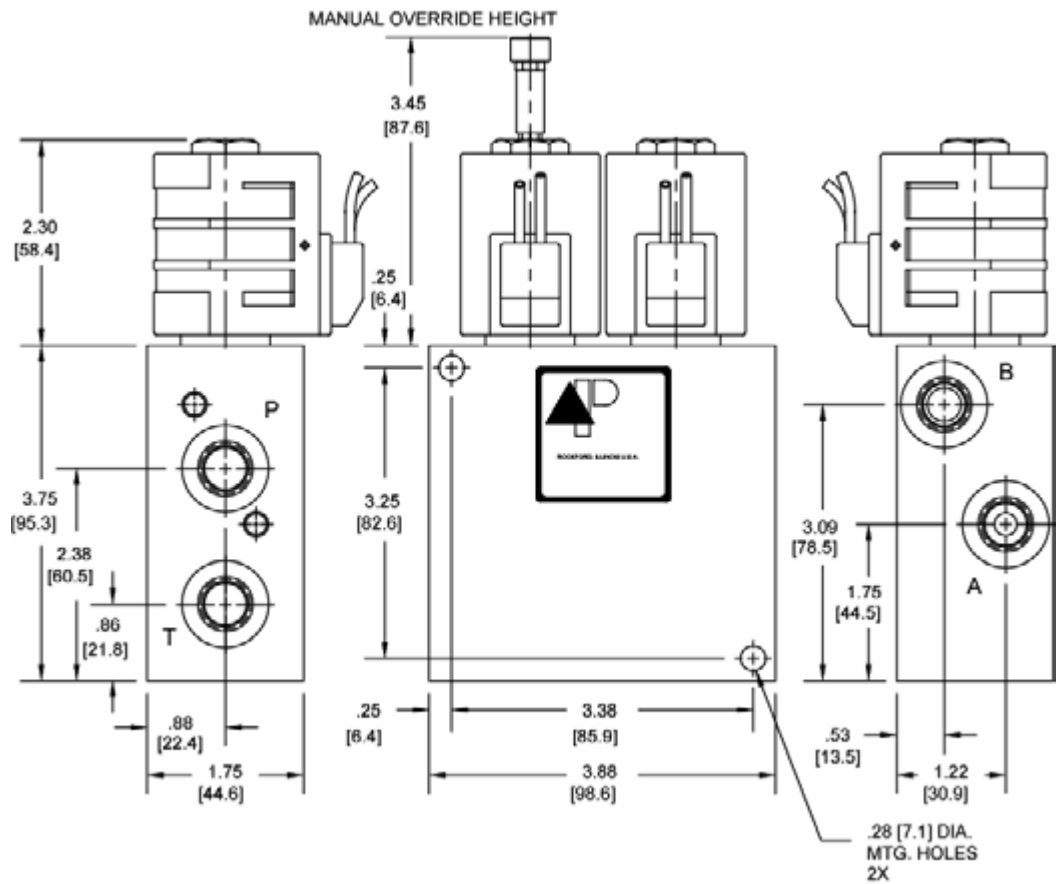
OPERATION

See options chart for specific operation.

VALVE SPECIFICATIONS

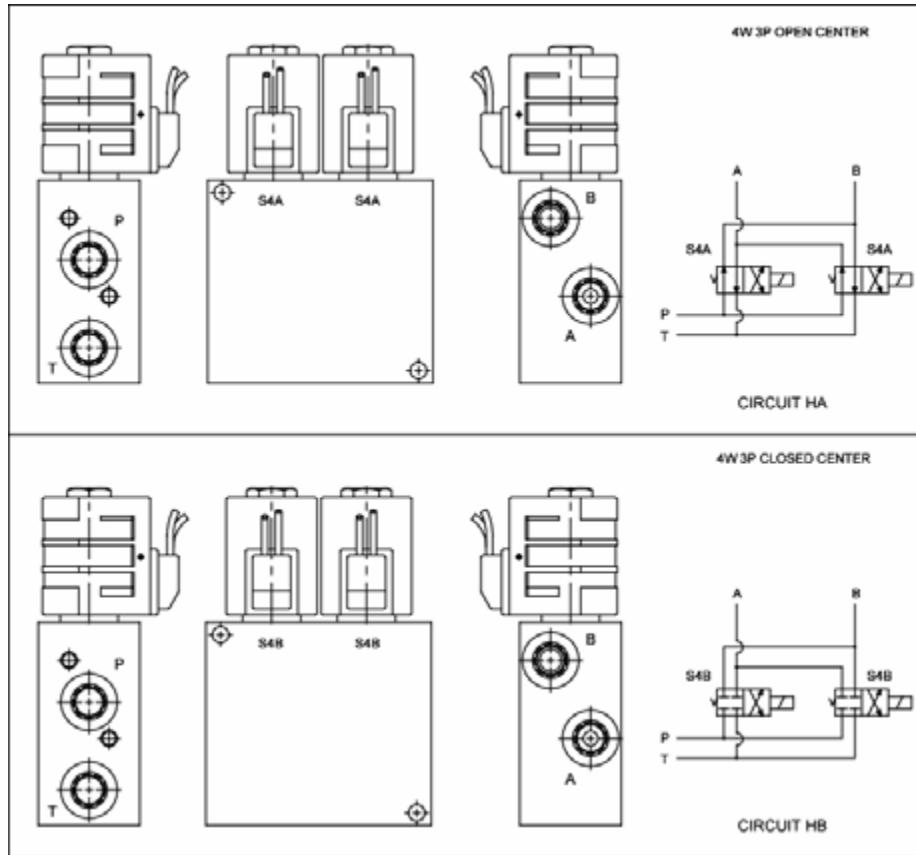
Nominal Flow	8 GPM (30 LPM)
Rated Operating Pressure	3000 PSI (207 bar)
Viscosity Range	36 to 3000 SSU (3 to 647 cSt)
Filtration	30 micron nominal
Media Operating Temp. Range	-40° to 250°F (-40° to 120°C)
Operating Fluid Media	General Purpose Hydraulic Fluid
Cartridge Size	Delta Series 7/8-14 Thread
Cartridge Torque Requirements	30 ft-lbs (40.6 Nm)
Coil Torque Nut Requirements	4-6 ft-lbs (5.4-8.1 Nm)

DIMENSIONS



WARNING: the specifications/application data shown in our catalogs and data sheets are intended only as a general guide for the product described (herein). Any specific application should not be undertaken without independent study, evaluation, and testing for suitability.

OPTIONS CHART



ORDERING INFORMATION

Approximate Coil Weight: .74 lbs (.33 kg)

<u>CIRCUITS</u>		<u>OPTIONS</u>		<u>VOLTAGE</u>	
HA	Buna Standard	00	06	6 VDC	
HB	Viton Standard	V0	12	12 VDC	
	Manual Override	0M	24	24 VDC	
			36	36 VDC	
			48	48 VDC	
			25	25 VAC	
			11	120 VAC	
			22	220 VAC	
			44	440 VAC	

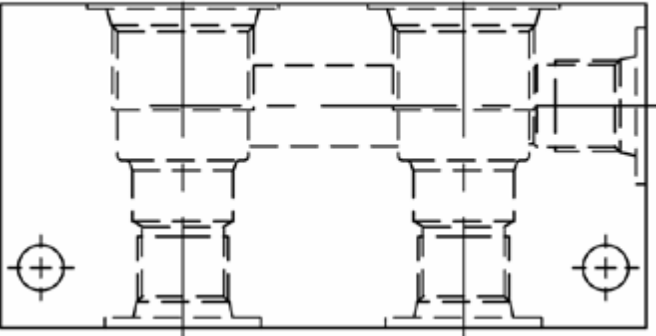
"D" COIL TERMINATION
(All DC Except as Noted)

DL Double Lead	SS Single Spade	IA "I" Coil AMP Superseal - Integral
DT Deutsch on Leads DT04-2P	DS Double Spade	ID "I" Coil Deutsch - Integral DT04-2P
ML Metri-Pack on Leads	HC DIN 43650 (Hirschmann) - (AC&DC)	IJ "I" Coil AMP Jr. Timer - Integral
PL Packard on Leads	CL Conduit Lead - (AC Only)	IM "I" Coil Metri-Pack - Integral
WL Weatherpack on Leads	DI Deutsch - Integral DT04-2P	

WARNING: the specifications/application data shown in our catalogs and data sheets are intended only as a general guide for the product described (herein). Any specific application should not be undertaken without independent study, evaluation, and testing for suitability.

PRE-ENGINEERED CIRCUIT, OPTION **MODEL I***

BASE BODY - 20200009 = #6 SAE



BODY WEIGHT: .83 lbs (.37 kg)

DESCRIPTION

Pre-engineered circuit, option model I*.

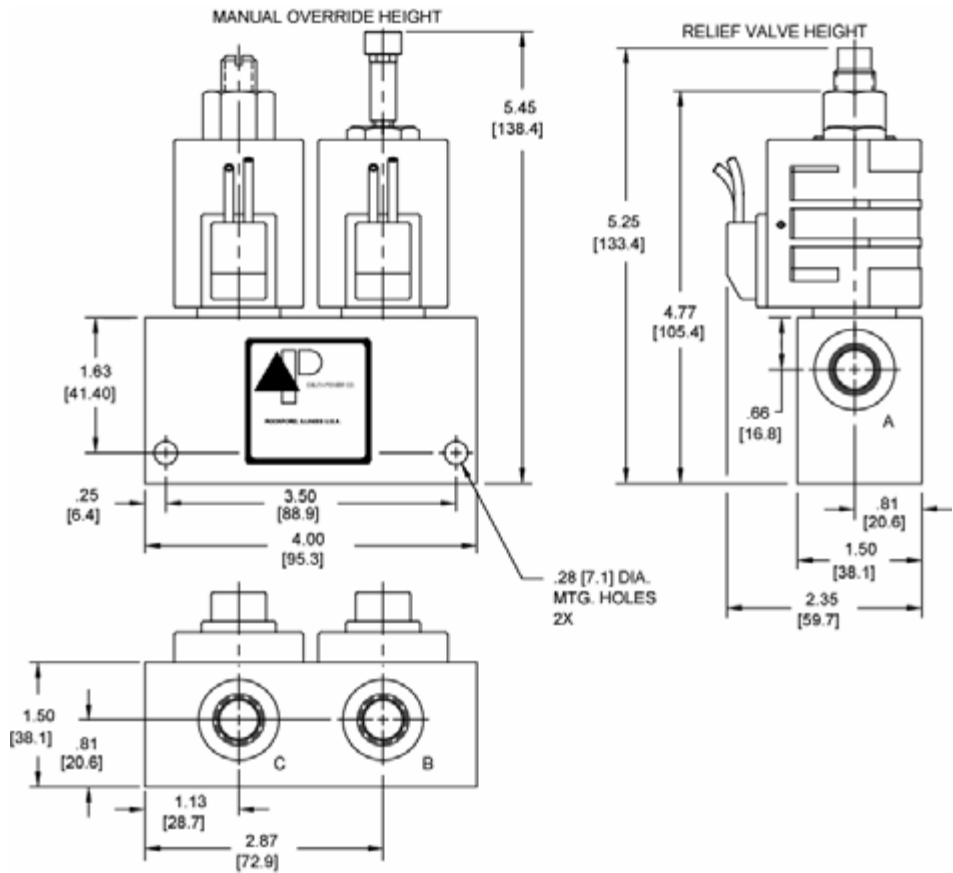
OPERATION

See model options for specific operation (back).

VALVE SPECIFICATIONS

Nominal Flow	12 GPM (45 LPM)
Rated Operating Pressure	3500 PSI (241 bar)
Viscosity Range	36 to 3000 SSU (3 to 647 cSt)
Filtration	30 micron nominal
Media Operating Temp. Range	-40° to 250°F (-40° to 120°C)
Operating Fluid Media	General Purpose Hydraulic Fluid
Cartridge Size	Delta Series 7/8-14 Thread
Cartridge Torque Requirements	30 ft-lbs (40.6 Nm)
Coil Torque Nut Requirements	4-6 ft-lbs (5.4-8.1 Nm)

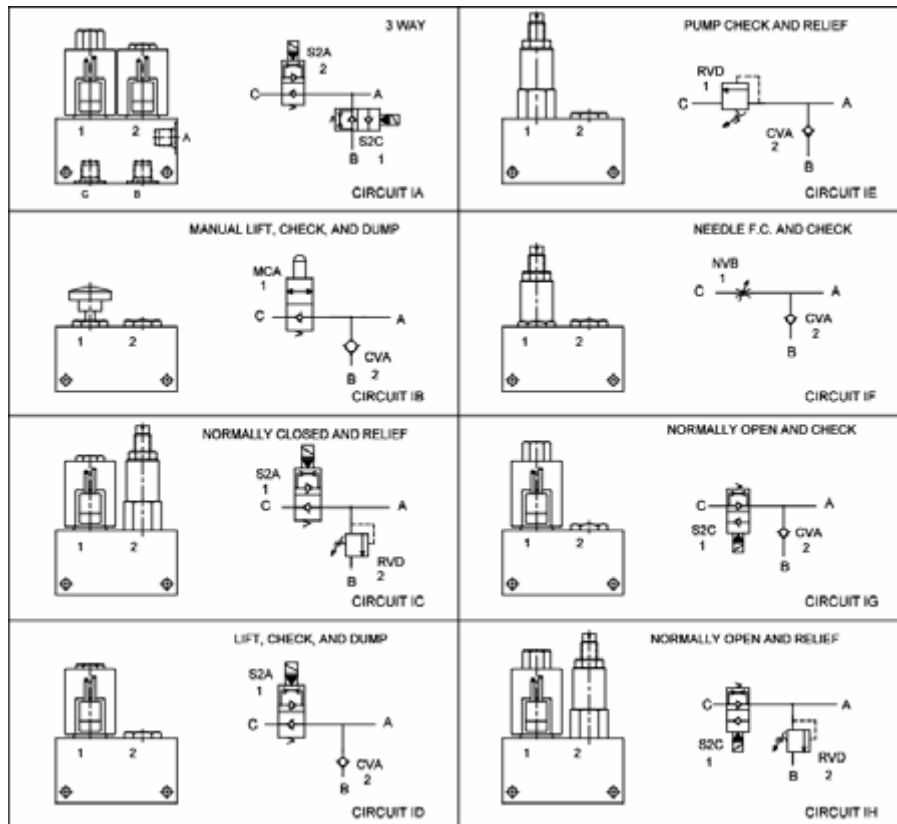
DIMENSIONS



WARNING: the specifications/application data shown in our catalogs and data sheets are intended only as a general guide for the product described (herein). Any specific application should not be undertaken without independent study, evaluation, and testing for suitability.

Via Malavolti, 36 - 41122 Modena - ITALY - Phone +39 (059) 254895 - Fax +39 (059) 253512 - mail: tecnord@tecnord.com - www.tecnord.com

OPTIONS CHART



ORDERING INFORMATION

Approximate Coil Weight: .74 lbs (.33 kg)

<u>CIRCUITS</u>		<u>OPTIONS</u>		<u>VOLTAGE</u>		<u>VALVE 2</u>		
IA	Buna Standard	00	06	6 VDC	01	.5-1 GPM	02	20-500 PSI
IB	Viton Standard	V0	12	12 VDC	02	1-2 GPM	15	200-1500 PSI
IC	Manual Override	0M	24	24 VDC	04	2-4 GPM	30	1500-3000 PSI
ID			36	36 VDC	08	4-8 GPM	40	2500-4000 PSI
IE			48	48 VDC	<u>FLOW CONTROL</u>		<u>RELIEF VALVE</u>	
IF			25	25 VAC	<u>VALVE 1</u>			
IG			11	120 VAC	<u>FLOW</u>		<u>PRESSURE</u>	
IH			22	220 VAC	01	.5-1 GPM	02	20-500 PSI
			44	440 VAC	02	1-2 GPM	15	200-1500 PSI
					04	2-4 GPM	30	1500-3000 PSI
					08	4-8 GPM	40	2500-4000 PSI
					<u>FLOW CONTROL</u>		<u>RELIEF VALVE</u>	

<u>"D" COIL TERMINATION</u> (All DC Except as Noted)		<u>IMMERSION PROOF "D" TYPE</u>	
DL Double Lead	HC DIN 43650 (Hirschmann) - (AC&DC)	IA "I" Coil AMP Superseal - Integral	
DT Deutsch on Leads DT04-2P	CL Conduit Lead - (AC Only)	ID "I" Coil Deutsch - Integral DT04-2P	
ML Metri-Pack on Leads	DI Deutsch - Integral DT04-2P	IJ "I" Coil AMP Jr. Timer - Integral	
PL Packard on Leads		IM "I" Coil Metri-Pack - Integral	
WL Weatherpack on Leads			
SS Single Spade			
DS Double Spade			

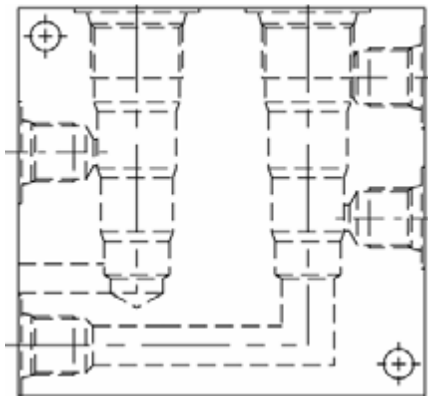
FOR SPECIAL PRESET VALUES ON VALVES, CONSULT FACTORY

FOR SPECIAL PRESET VALUES ON VALVES, CONSULT FACTORY

WARNING: the specifications/application data shown in our catalogs and data sheets are intended only as a general guide for the product described (herein). Any specific application should not be undertaken without independent study, evaluation, and testing for suitability.

PRE-ENGINEERED CIRCUIT, OPTION **MODEL J***

BASE BODY - 20200010 = #6 SAE



BODY WEIGHT: 1.50 lbs (.68 kg)

DESCRIPTION

Pre-engineered circuit, option model J*.

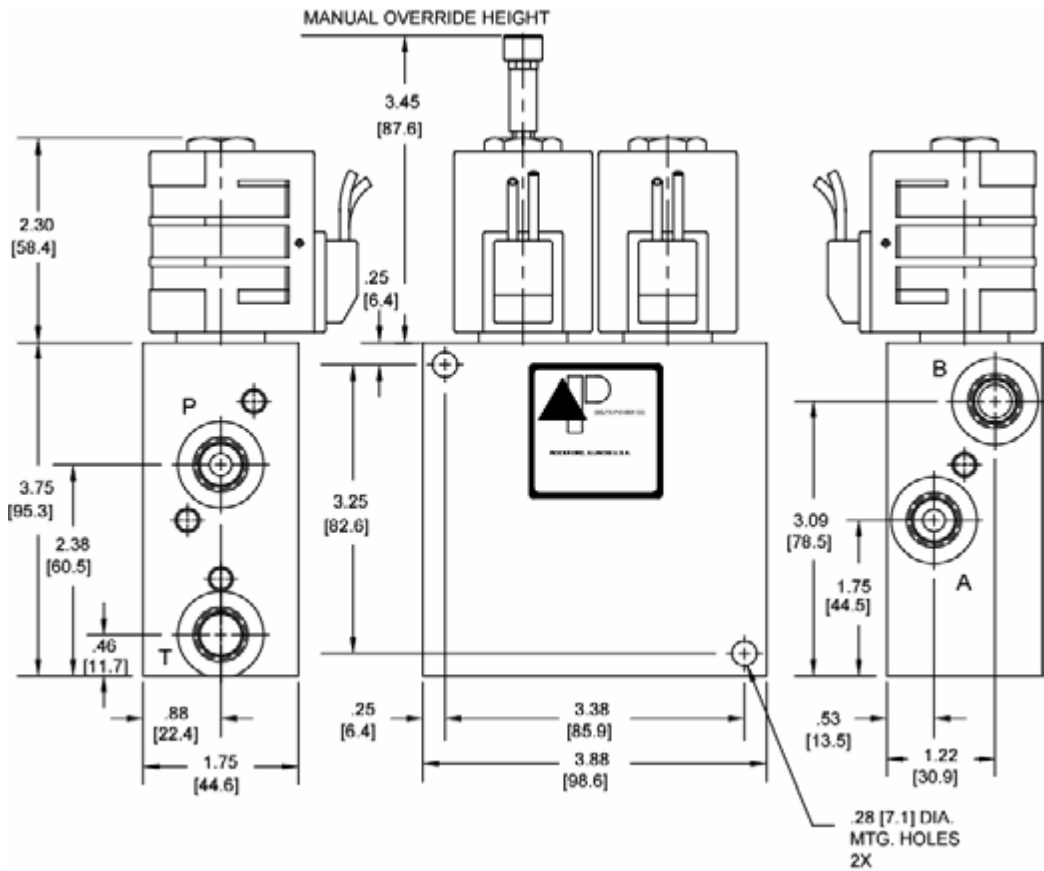
OPERATION

See typical schematic for specific operation.

VALVE SPECIFICATIONS

Nominal Flow	8 GPM (30 LPM)
Rated Operating Pressure	3000 PSI (207 bar)
Viscosity Range	36 to 3000 SSU (3 to 647 cSt)
Filtration	30 micron nominal
Media Operating Temp. Range	-40° to 250°F (-40° to 120°C)
Operating Fluid Media	General Purpose Hydraulic Fluid
Cartridge Size	Delta Series 7/8-14 Thread
Cartridge Torque Requirements	30 ft-lbs (40.6 Nm)
Coil Torque Nut Requirements	4-6 ft-lbs (5.4-8.1 Nm)

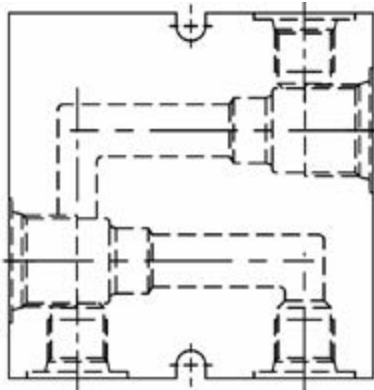
DIMENSIONS



WARNING: the specifications/application data shown in our catalogs and data sheets are intended only as a general guide for the product described (herein). Any specific application should not be undertaken without independent study, evaluation, and testing for suitability.

PRE-ENGINEERED CIRCUIT, OPTION **MODEL K***

BASE BODY - 20200011 = #6 SAE



BODY WEIGHT: 1.50 lbs (.68 kg)

DESCRIPTION

Pre-engineered circuit, option model K*.

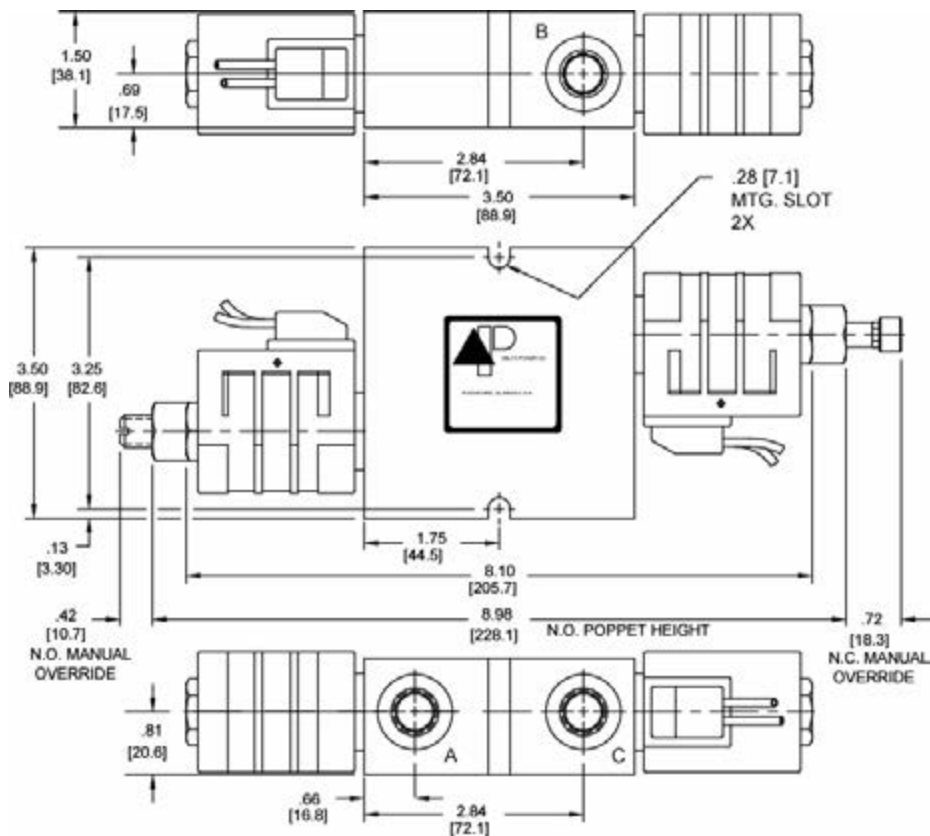
OPERATION

See options chart for specific operation.

VALVE SPECIFICATIONS

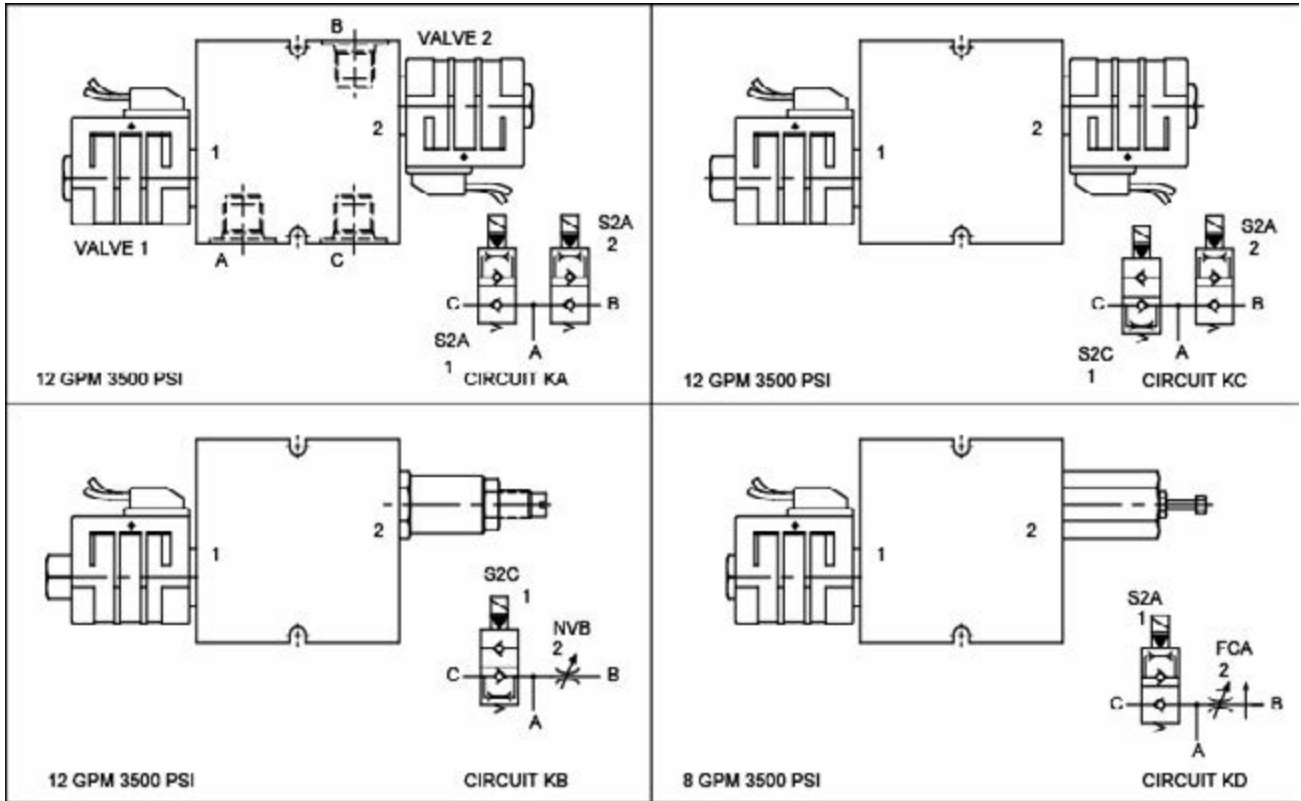
Nominal Flow	See Options Chart for Flow Range
Rated Operating Pressure	See Options Chart for Pres. Range
Viscosity Range	36 to 3000 SSU (3 to 647 cSt)
Filtration	30 micron nominal
Media Operating Temp. Range	-40° to 250°F (-40° to 120°C)
Operating Fluid Media	General Purpose Hydraulic Fluid
Cartridge Size	Delta Series 7/8-14 Thread
Cartridge Torque Requirements	30 ft-lbs (40.6 Nm)
Coil Torque Nut Requirements	4-6 ft-lbs (5.4-8.1 Nm)

DIMENSIONS



WARNING: the specifications/application data shown in our catalogs and data sheets are intended only as a general guide for the product described (herein). Any specific application should not be undertaken without independent study, evaluation, and testing for suitability.

OPTIONS CHART



ORDERING INFORMATION

Approximate Coil Weight: .74 lbs (.33 kg)

<u>CIRCUITS</u>		<u>OPTIONS</u>		<u>VOLTAGE</u>		<u>VALVE 2</u>			
KA	Buna Standard	00	06	6 VDC	01	.5-1 GPM	02	20-500 PSI	
KB	Viton Standard	V0	12	12 VDC	02	1-2 GPM	15	200-1500 PSI	
KC	Manual Override	0M	24	24 VDC	04	2-4 GPM	30	1500-3000 PSI	
KD			36	36 VDC	08	4-8 GPM	40	2500-4000 PSI	
KE			48	48 VDC	FLOW CONTROL				
			25	25 VAC				RELIEF VALVE	
			11	120 VAC					
			22	220 VAC					
			44	440 VAC					

<u>"D" COIL TERMINATION</u>		<u>IMMERSION PROOF "D" TYPE</u>	
<i>(All DC Except as Noted)</i>			
DL	Double Lead	HC	DIN 43650 (Hirschmann) - (AC&DC)
DT	Deutsch on Leads DT04-2P	CL	Conduit Lead - (AC Only)
ML	Metri-Pack on Leads	DI	Deutsch - Integral DT04-2P
PL	Packard on Leads		
WL	Weatherpack on Leads		
SS	Single Spade		
DS	Double Spade		

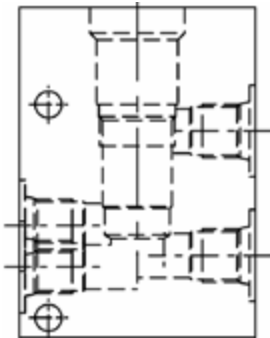
<u>VALVE 1</u>		<u>VALVE 2</u>	
<u>FLOW</u>		<u>FLOW</u>	
01	.5-1 GPM	01	.5-1 GPM
02	1-2 GPM	02	1-2 GPM
04	2-4 GPM	04	2-4 GPM
08	4-8 GPM	08	4-8 GPM
FLOW CONTROL		FLOW CONTROL	
RELIEF VALVE		RELIEF VALVE	

FOR SPECIAL PRESET VALUES ON VALVES, CONSULT FACTORY

WARNING: the specifications/application data shown in our catalogs and data sheets are intended only as a general guide for the product described (herein). Any specific application should not be undertaken without independent study, evaluation, and testing for suitability.

PRE-ENGINEERED CIRCUIT, OPTION **MODEL L***

BASE BODY - 20200012 = #6 SAE



BODY WEIGHT: 1.80 lbs (.82 kg)

DESCRIPTION

Pre-engineered circuit, option model L*.

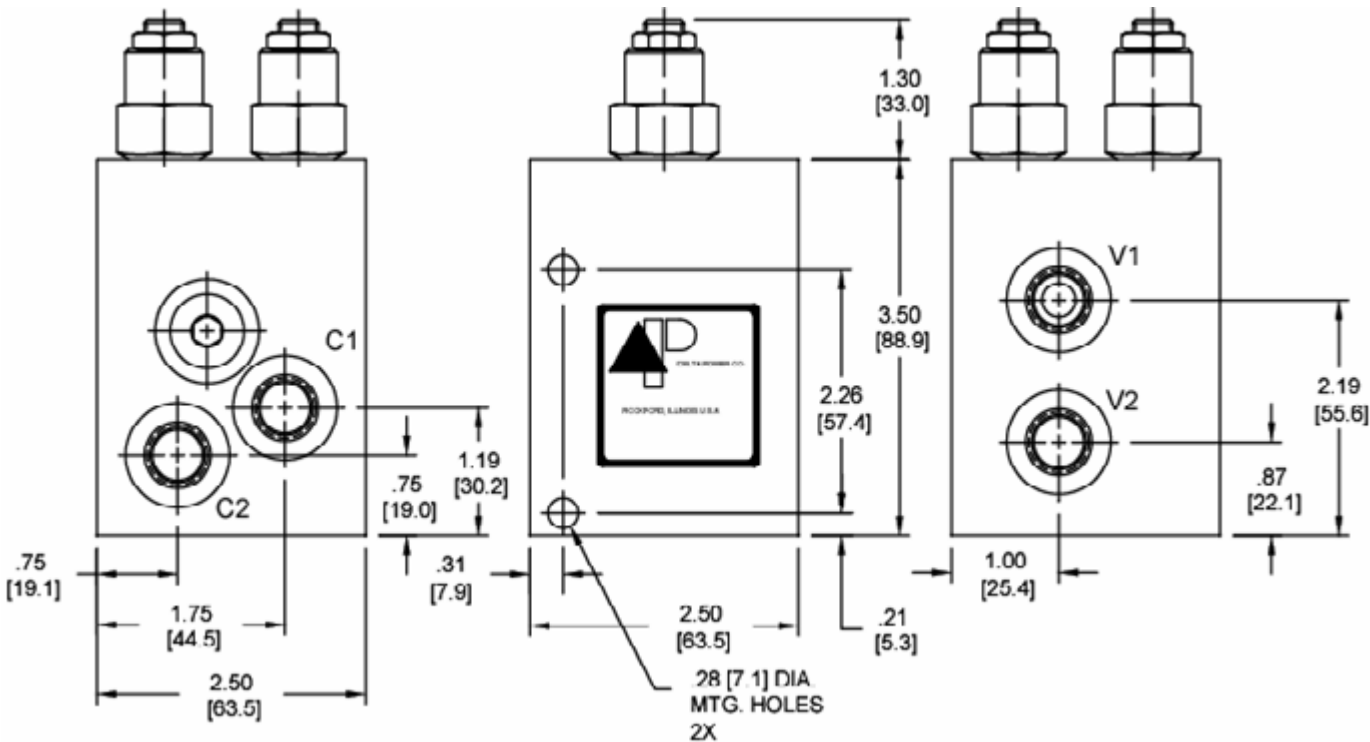
OPERATION

See typical schematic for specific operation.

VALVE SPECIFICATIONS

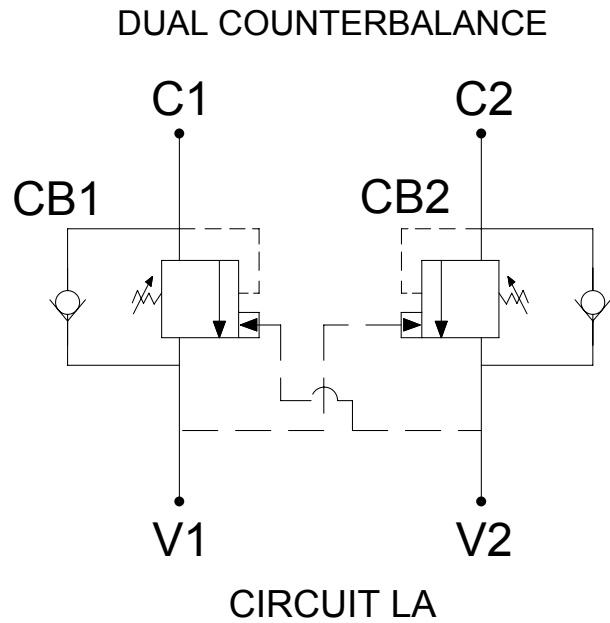
Nominal Flow	15 GPM (60 LPM)
Rated Operating Pressure	See Options Chart for Pres. Range
Viscosity Range	36 to 3000 SSU (3 to 647 cSt)
Filtration	30 micron nominal
Media Operating Temp. Range	-40° to 250°F (-40° to 120°C)
Operating Fluid Media	General Purpose Hydraulic Fluid
Cartridge Size	Special Series M20X1.5-H6
	Thread
Cartridge Torque Requirements	30 ft-lbs (40.6 Nm)

DIMENSIONS

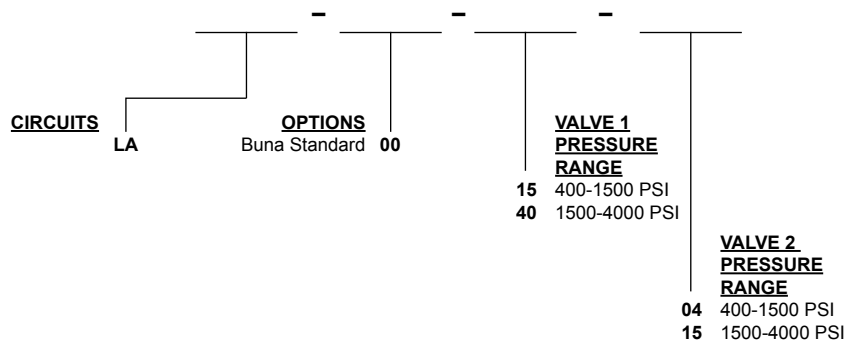


WARNING: the specifications/application data shown in our catalogs and data sheets are intended only as a general guide for the product described (herein). Any specific application should not be undertaken without independent study, evaluation, and testing for suitability.

TYPICAL SCHEMATIC



ORDERING INFORMATION

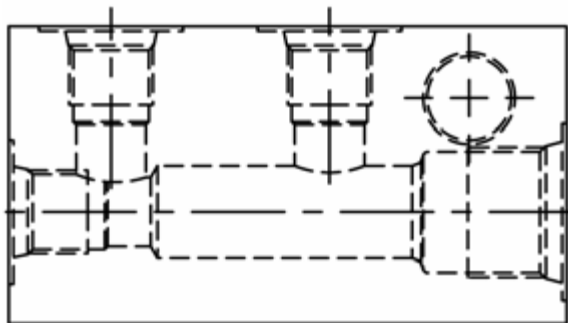


Note: Aluminum Bodies are NOT durability rated for 4000 PSI (276 bar). Consult factory for body options.

FOR SPECIAL PRESET VALUES ON VALVES, CONSULT FACTORY

PRE-ENGINEERED CIRCUIT, OPTION **MODEL M***

BASE BODY - 20200013 = #6 SAE



BODY WEIGHT: 1.09 lbs (.49 kg)

DESCRIPTION

Pre-engineered circuit, option model M*.

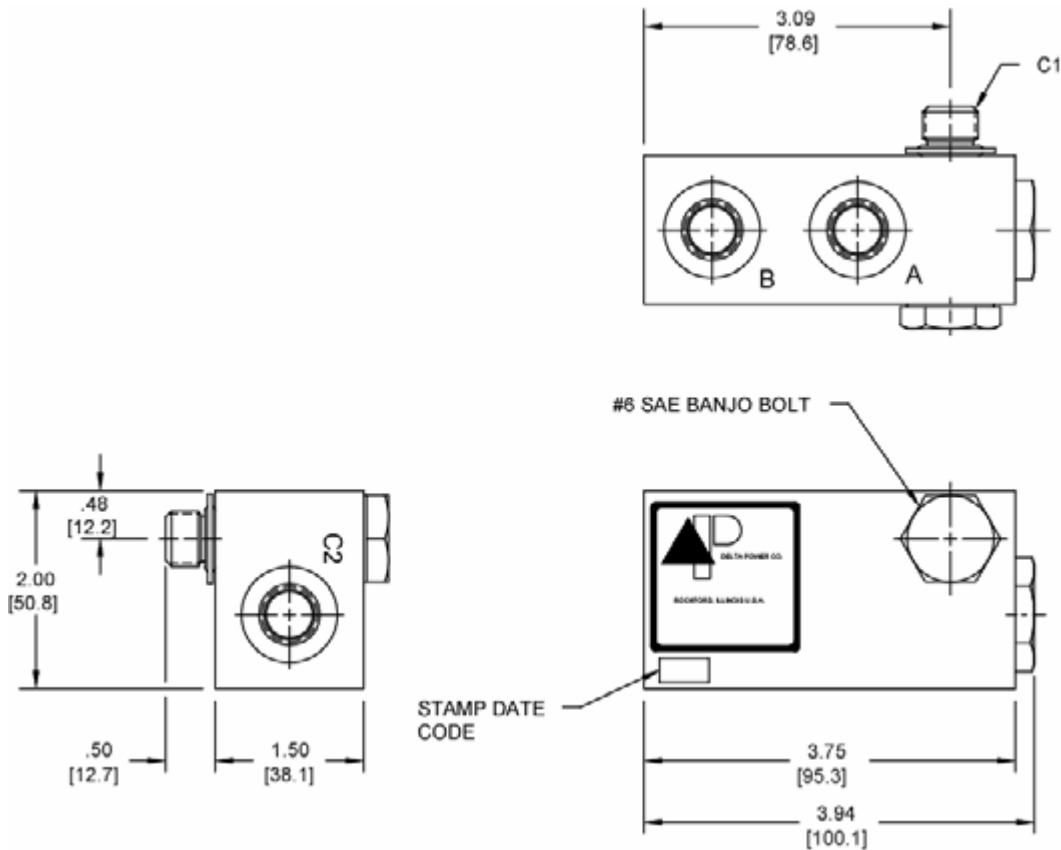
OPERATION

See typical schematic for specific operation.

VALVE SPECIFICATIONS

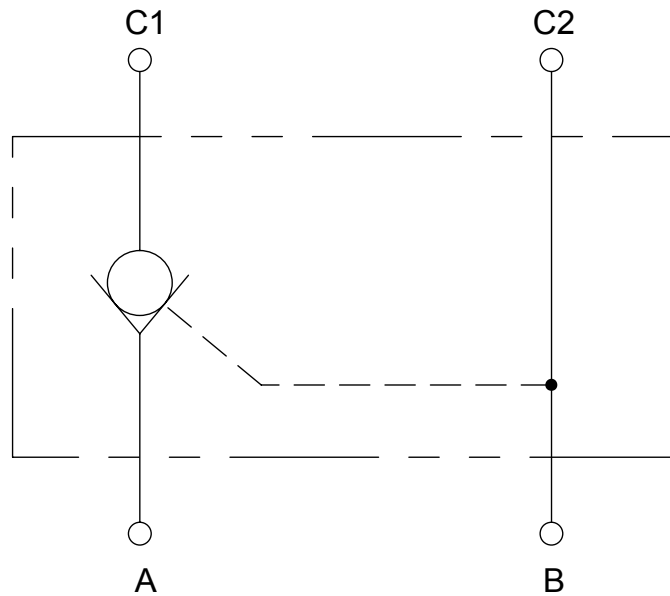
Nominal Flow	12 GPM (45 LPM)
Rated Operating Pressure	3500 PSI (241 bar)
Viscosity Range	36 to 3000 SSU (3 to 647 cSt)
Filtration	30 micron nominal
Media Operating Temp. Range	-40° to 250°F (-40° to 120°C)
Operating Fluid Media	General Purpose Hydraulic Fluid
Ratio	4:1
Cartridge Size	M20 X 1.5
Cartridge Torque Requirements	30 ft-lbs (40.6 Nm)

DIMENSIONS



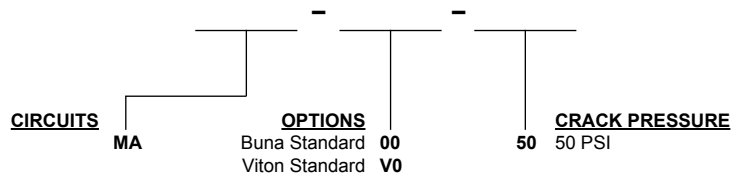
WARNING: the specifications/application data shown in our catalogs and data sheets are intended only as a general guide for the product described (herein). Any specific application should not be undertaken without independent study, evaluation, and testing for suitability.

TYPICAL SCHEMATIC

P.O. CHECK CIRCUIT
4:1 RATIO

CIRCUIT MA

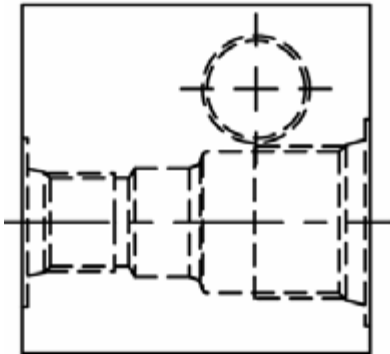
ORDERING INFORMATION



WARNING: the specifications/application data shown in our catalogs and data sheets are intended only as a general guide for the product described (herein). Any specific application should not be undertaken without independent study, evaluation, and testing for suitability.

PRE-ENGINEERED CIRCUIT, OPTION **MODEL N***

BASE BODY - 20200014 = #6 SAE



BODY WEIGHT: 1.09 lbs (.49 kg)

DESCRIPTION

Pre-engineered circuit, option model N*.

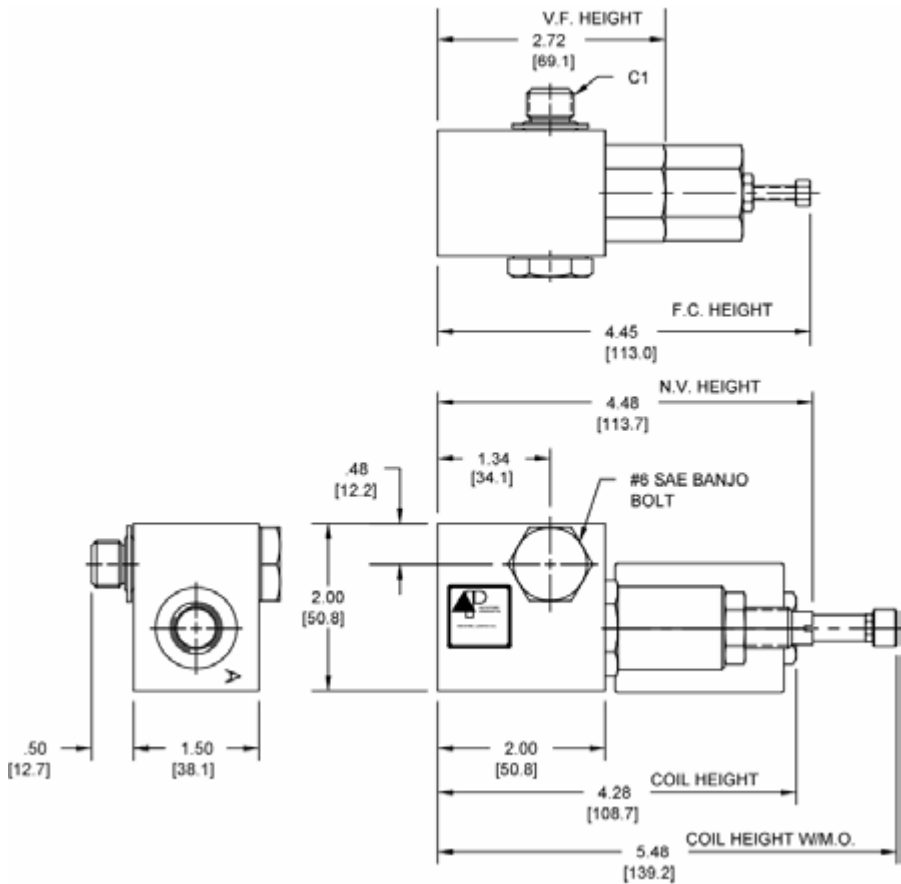
OPERATION

See options chart for specific operation.

VALVE SPECIFICATIONS

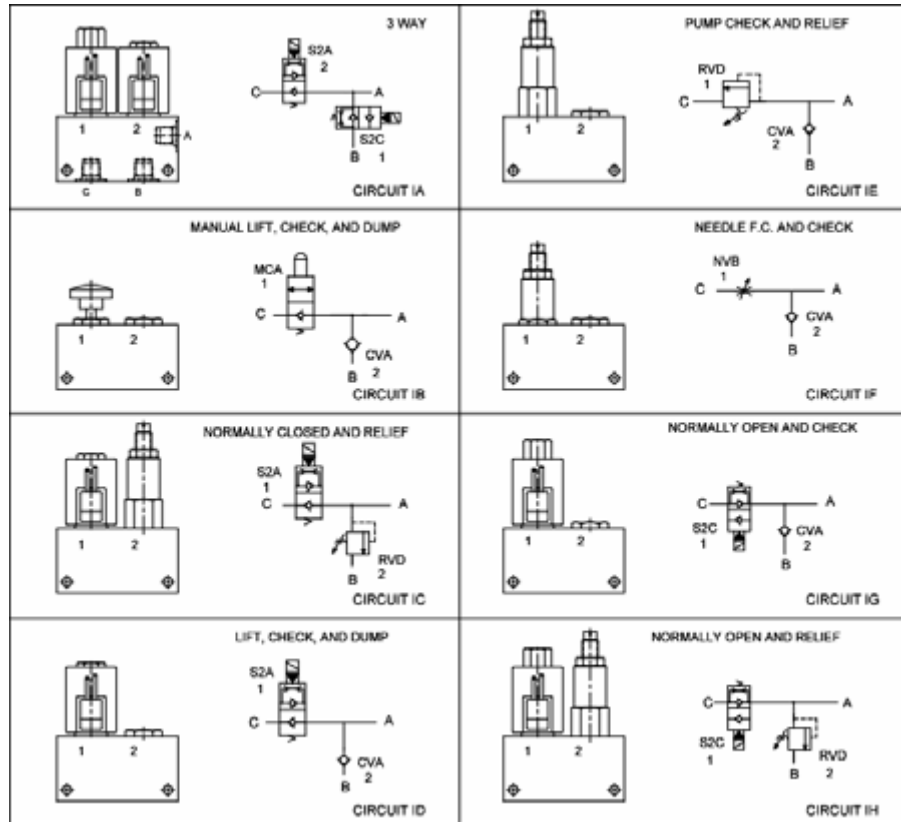
Nominal Flow	See Options Chart for Flow Range
Rated Operating Pressure	See Options Chart for Pres. Range
Viscosity Range	36 to 3000 SSU (3 to 647 cSt)
Filtration	30 micron nominal
Media Operating Temp. Range	-40° to 250°F (-40° to 120°C)
Operating Fluid Media	General Purpose Hydraulic Fluid
Cartridge Size	Delta Series 7/8-14 Thread
Cartridge Torque Requirements	30 ft-lbs (40.6 Nm)
Coil Torque Nut Requirements	4-6 ft-lbs (5.4-8.1 Nm)

DIMENSIONS



WARNING: the specifications/application data shown in our catalogs and data sheets are intended only as a general guide for the product described (herein). Any specific application should not be undertaken without independent study, evaluation, and testing for suitability.

OPTIONS CHART



ORDERING INFORMATION

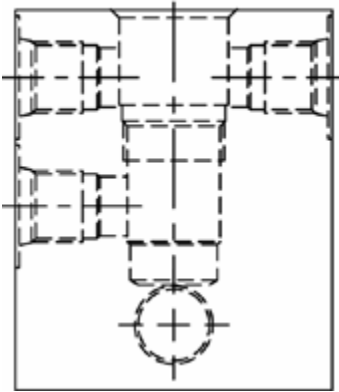
Approximate Coil Weight: .74 lbs (.33 kg)

<u>CIRCUITS</u>			<u>OPTIONS</u>			<u>VOLTAGE</u>			<u>VALVE 1</u>		
NA	Buna Standard	00	06	6 VDC	01	1 GPM	02	20-500 PSI			
NB	Viton Standard	V0	12	12 VDC	02	2 GPM	15	200-1500 PSI			
NC	Manual Override	OM	24	24 VDC	03	3 GPM	30	1500-3000 PSI			
ND			36	36 VDC	04	4 GPM	40	2500-4000 PSI			
NE			48	48 VDC	05	5 GPM	RELIEF VALVE				
			25	25 VAC	06	6 GPM					
			11	120 VAC	07	7 GPM					
			22	220 VAC	08	8 GPM					
			44	440 VAC	09	9 GPM					
					10	10 GPM					
					FLOW CONTROL						
					FOR SPECIAL PRESET VALUES ON VALVES, CONSULT FACTORY						
<u>OIL TERMINATION</u> <i>(Except as Noted)</i>						<u>IMMERSION PROOF "D" TYPE</u>					
DL	Double Lead	SS	Single Spade	IA	"I" Coil AMP Superseal - Integral						
DT	Deutsch on Leads DT04-2P	DS	Double Spade	ID	"I" Coil Deutsch - Integral DT04-2P						
ML	Metri-Pack on Leads	HC	DIN 43650 (Hirschmann) - (AC&DC)	IJ	"I" Coil AMP Jr. Timer - Integral						
PL	Packard on Leads	CL	Conduit Lead - (AC Only)	IM	"I" Coil Metri-Pack - Integral						
WL	Weatherpack on Leads	DI	Deutsch - Integral DT04-2P								

WARNING: the specifications/application data shown in our catalogs and data sheets are intended only as a general guide for the product described (herein). Any specific application should not be undertaken without independent study, evaluation, and testing for suitability.

PRE-ENGINEERED CIRCUIT, OPTION **MODEL O***

BASE BODY - 20200015 = #6 SAE



BODY WEIGHT: 1.09 lbs (.49 kg)

DESCRIPTION

Pre-engineered circuit, option model O*.

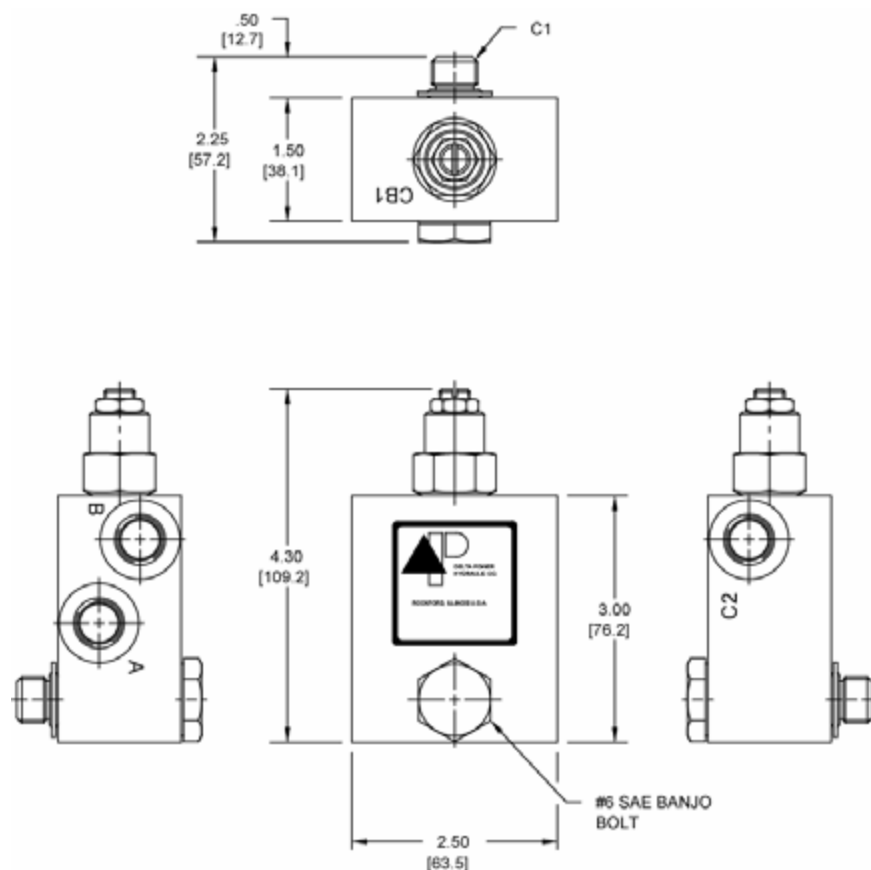
OPERATION

See options chart for specific operation.

VALVE SPECIFICATIONS

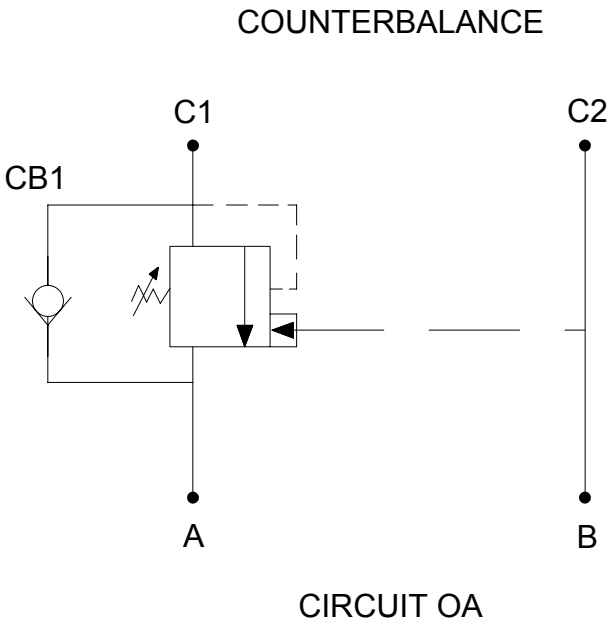
Nominal Flow	15 GPM (57 LPM)
Rated Operating Pressure	3500 PSI (241 bar)
Viscosity Range	36 to 3000 SSU (3 to 647 cSt)
Filtration	30 micron nominal
Media Operating Temp. Range	-40° to 250°F (-40° to 120°C)
Operating Fluid Media	General Purpose Hydraulic Fluid
Cartridge Size	M20 X 1.5
Cartridge Torque Requirements	30 ft-lbs (40.6 Nm)

DIMENSIONS



WARNING: the specifications/application data shown in our catalogs and data sheets are intended only as a general guide for the product described (herein). Any specific application should not be undertaken without independent study, evaluation, and testing for suitability.

TYPICAL SCHEMATIC



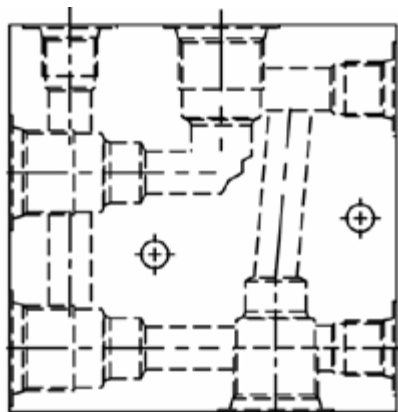
ORDERING INFORMATION

CIRCUITS		OPTIONS		PRESSURE RANGE	
OA	-	Buna Standard	00	15	400-1500 PSI
		Viton Standard	V0	40	1500-4000 PSI

FOR SPECIAL PRESET VALUES ON VALVES, CONSULT FACTORY

PRE-ENGINEERED CIRCUIT, OPTION **MODEL P***

BASE BODY - 20200017 = #6 SAE



BODY WEIGHT: 1.5 lbs (.68 kg)

DESCRIPTION

Pre-engineered circuit, option model P*.

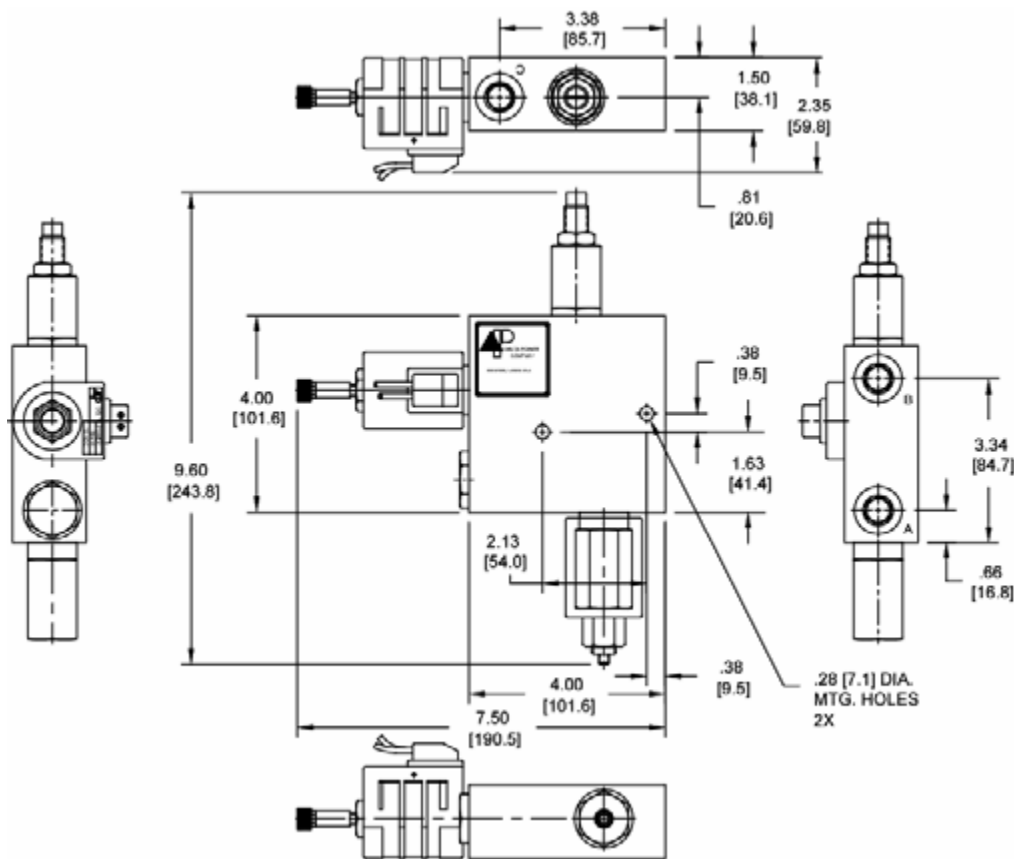
OPERATION

See options chart for specific operation (back).

VALVE SPECIFICATIONS

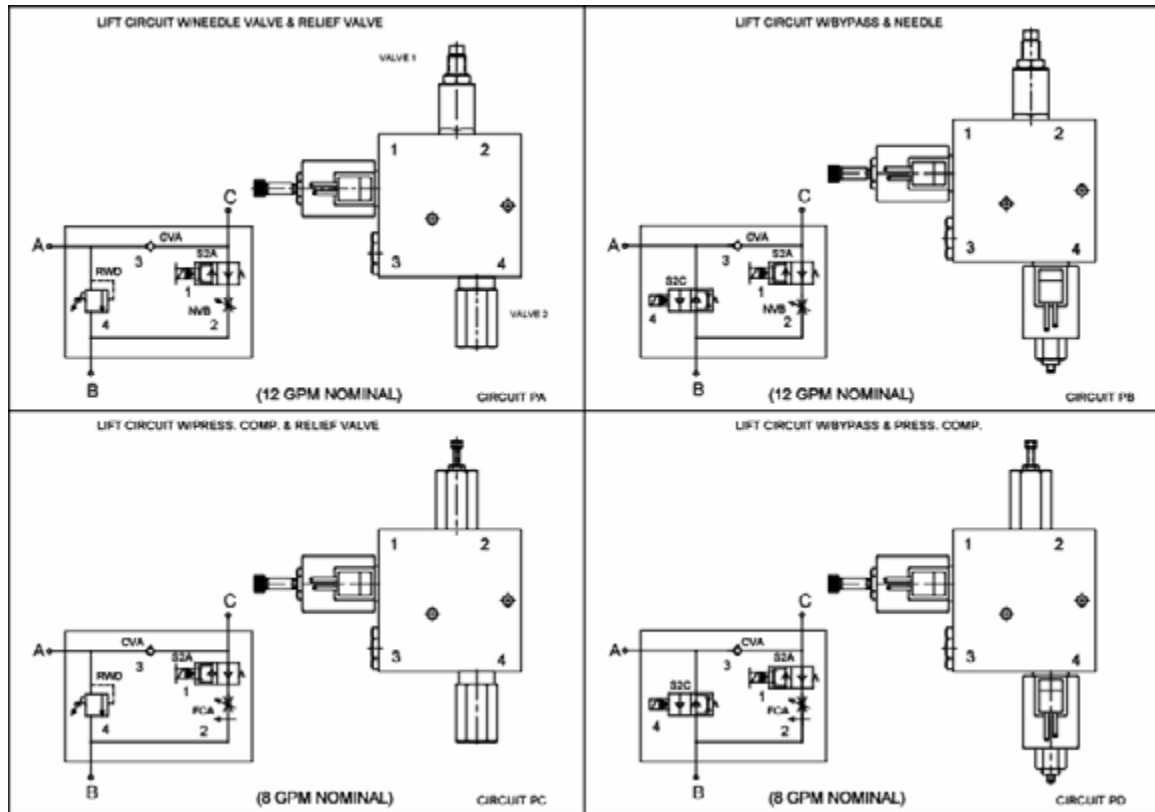
Nominal Flow	See Options Chart for Flow Range
Rated Operating Pressure	See Options Chart for Pres. Range
Viscosity Range	36 to 3000 SSU (3 to 647 cSt)
Filtration	30 micron nominal
Media Operating Temp. Range	-40° to 250°F (-40° to 120°C)
Operating Fluid Media	General Purpose Hydraulic Fluid
Cartridge Size	Delta Series 7/8-14 Thread
Cartridge Torque Requirements	30 ft-lbs (40.6 Nm)
Coil Torque Nut Requirements	4-6 ft-lbs (5.4-8.1 Nm)

DIMENSIONS



WARNING: the specifications/application data shown in our catalogs and data sheets are intended only as a general guide for the product described (herein). Any specific application should not be undertaken without independent study, evaluation, and testing for suitability.

OPTIONS CHART



ORDERING INFORMATION

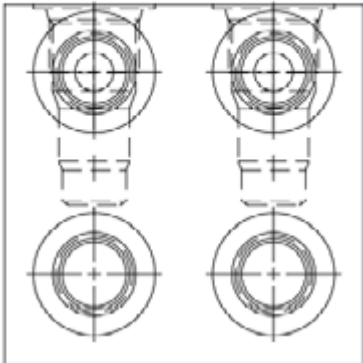
Approximate Coil Weight: .74 lbs (.33 kg)

<u>CIRCUITS</u>		<u>OPTIONS</u>		<u>VOLTAGE</u>		<u>VALVE 2</u>		
PA	Buna Standard	00	06	6 VDC	01	.5-1 GPM	02	20-500 PSI
PB	Viton Standard	V0	12	12 VDC	02	1-2 GPM	15	200-1500 PSI
PC	Manual Override	0M	24	24 VDC	04	2-4 GPM	30	1500-3000 PSI
PD			36	36 VDC	08	4-8 GPM	40	2500-4000 PSI
			48	48 VDC	FLOW CONTROL		RELIEF VALVE	
			25	25 VAC				
			11	120 VAC				
			22	220 VAC				
			44	440 VAC				
<u>"D" COIL TERMINATION</u> (All DC Except as Noted)						<u>VALVE 1</u>		
						<u>FLOW</u>	<u>PRESSURE</u>	
						01 .5-1 GPM	07 100-700 PSI	
						02 1-2 GPM	30 100-3000 PSI	
						04 2-4 GPM	40 3000-4000 PSI	
						08 4-8 GPM	RELIEF VALVE	
						FLOW CONTROL		
						FOR SPECIAL PRESET VALUES ON VALVES, CONSULT FACTORY		

WARNING: the specifications/application data shown in our catalogs and data sheets are intended only as a general guide for the product described (herein). Any specific application should not be undertaken without independent study, evaluation, and testing for suitability.

PRE-ENGINEERED CIRCUIT, OPTION **MODEL Q***

BASE BODY - 20200018 = #8 SAE



BODY WEIGHT: 1.50 lbs (.68 kg)

DESCRIPTION

Pre-engineered circuit, option model Q*.

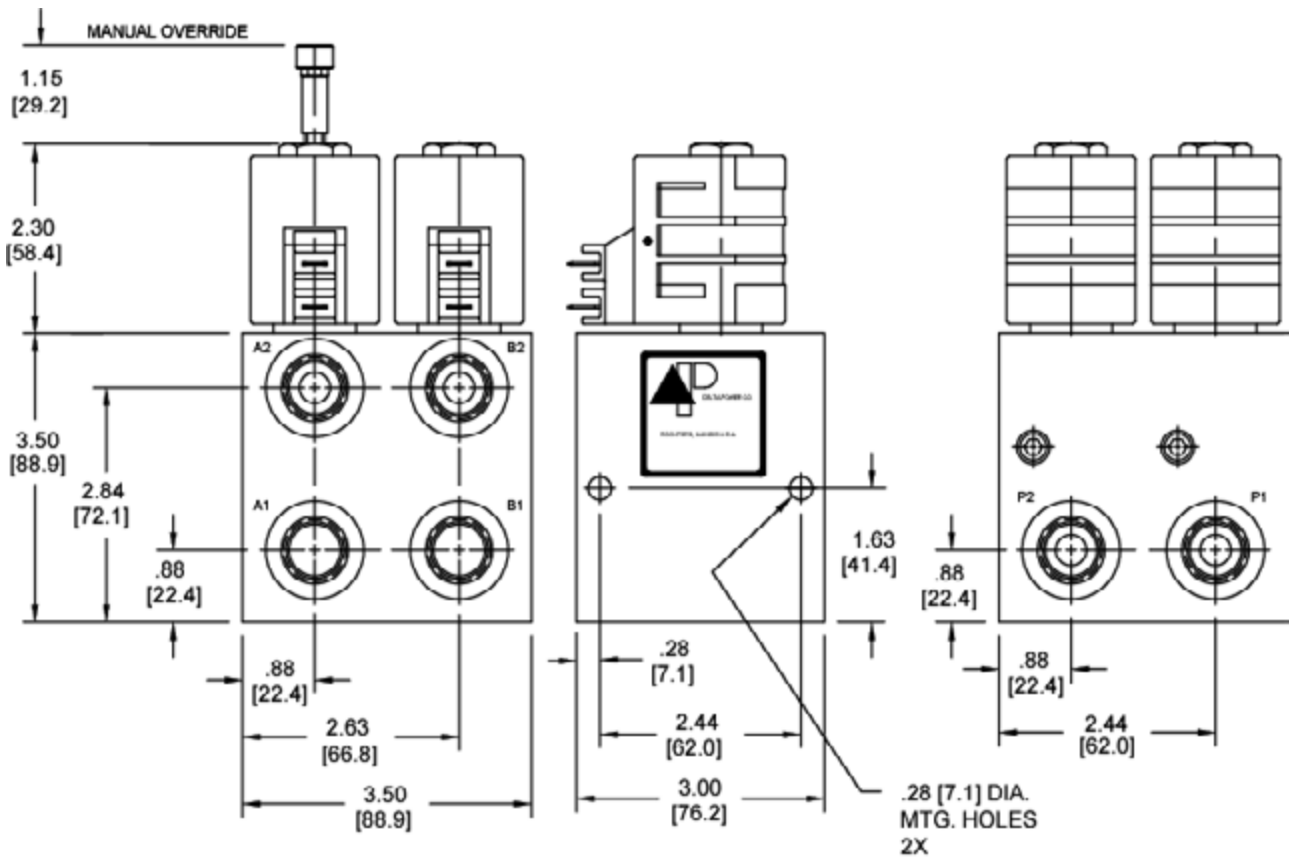
OPERATION

See options chart for specific operation.

VALVE SPECIFICATIONS

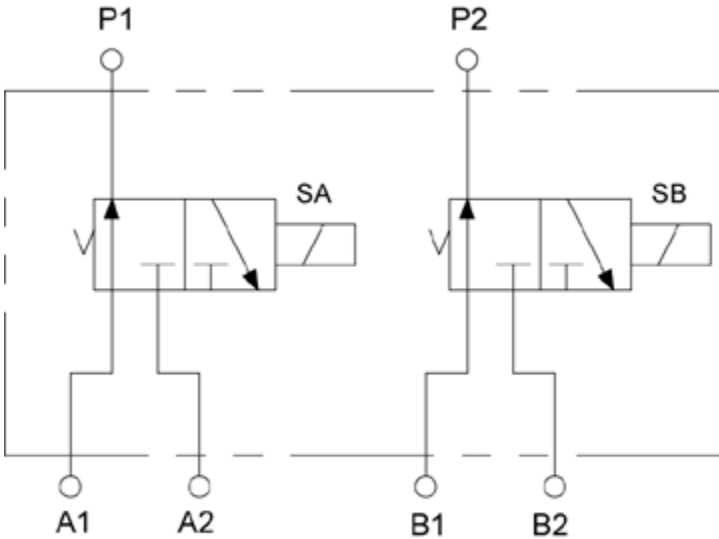
Nominal Flow	8 GPM (30 LPM)
Rated Operating Pressure	400-3500 PSI (28-241 bar)
Viscosity Range	36 to 3000 SSU (3 to 647 cSt)
Filtration	30 micron nominal
Media Operating Temp. Range	-40° to 250°F (-40° to 120°C)
Operating Fluid Media	General Purpose Hydraulic Fluid
Cartridge Size	Delta Series 7/8-14 Thread
Cartridge Torque Requirements	30 ft-lbs (40.6 Nm)
Coil Torque Nut Requirements	4-6 ft-lbs (5.4-8.1 Nm)

DIMENSIONS



WARNING: the specifications/application data shown in our catalogs and data sheets are intended only as a general guide for the product described (herein). Any specific application should not be undertaken without independent study, evaluation, and testing for suitability.

TYPICAL SCHEMATIC



CIRCUIT QA

ORDERING INFORMATION

Approximate Coil Weight: .74 lbs (.33 kg)

CIRCUITS	OPTIONS	VOLTAGE
QA	Buna Standard 00	06 6 VDC
	Viton Standard V0	12 12 VDC
	Manual Override 0M	24 24 VDC
		36 36 VDC
		48 48 VDC
		25 25 VAC
		11 120 VAC
		22 220 VAC
		44 440 VAC

"D" COIL TERMINATION
(All DC Except as Noted)

- DL Double Lead
- DT Deutsch on Leads DT04-2P
- ML Metri-Pack on Leads
- PL Packard on Leads
- WL Weatherpack on Leads

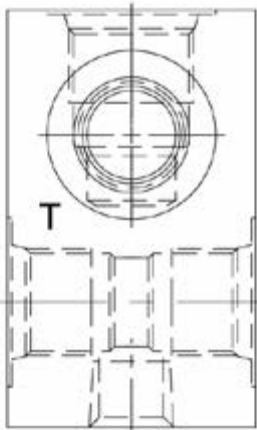
- SS Single Spade
- DS Double Spade
- HC DIN 43650 (Hirschmann) - (AC&DC)
- CL Conduit Lead - (AC Only)
- DI Deutsch - Integral DT04-2P

IMMERSION PROOF "D" TYPE

- IA "I" Coil AMP Superseal - Integral
- ID "I" Coil Deutsch - Integral DT04-2P
- IJ "I" Coil AMP Jr. Timer - Integral
- IM "I" Coil Metri-Pack - Integral

PRE-ENGINEERED CIRCUIT, OPTION **MODEL R***

BASE BODY - 20200019 = #8 SAE



BODY WEIGHT: .66 lbs (.30 kg)

DESCRIPTION

Pre-engineered circuit, option model R*.

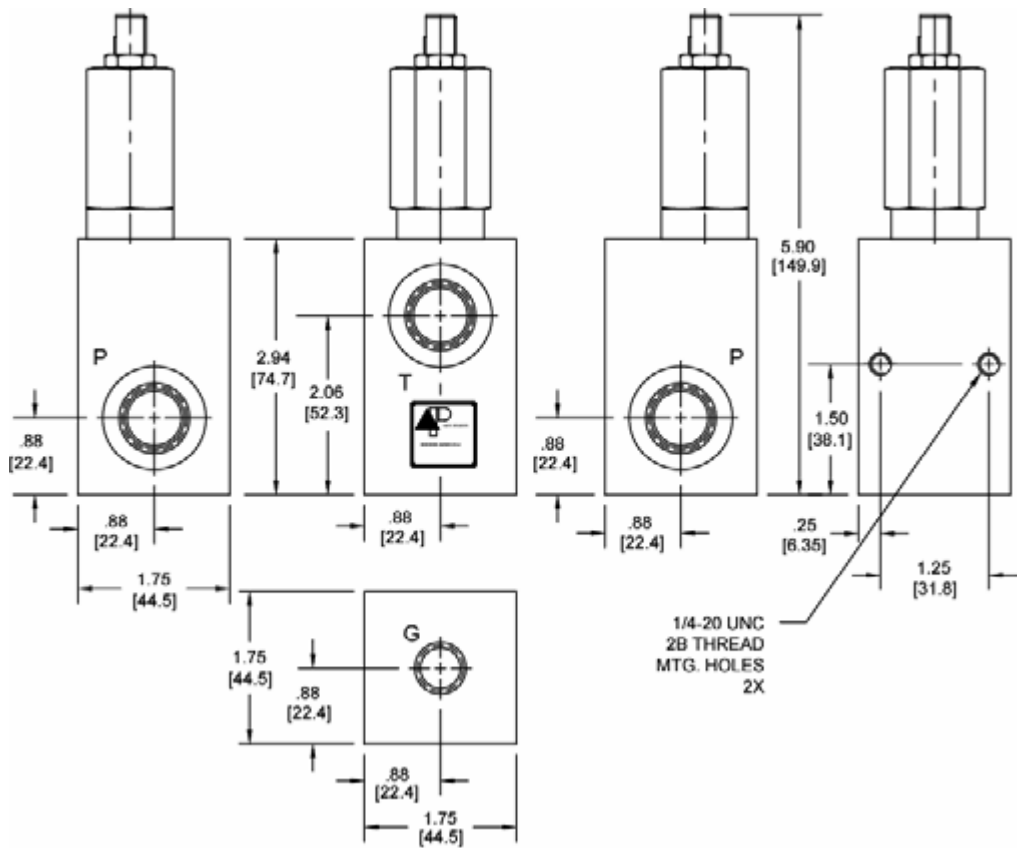
OPERATION

See typical schematic for specific operation.

VALVE SPECIFICATIONS

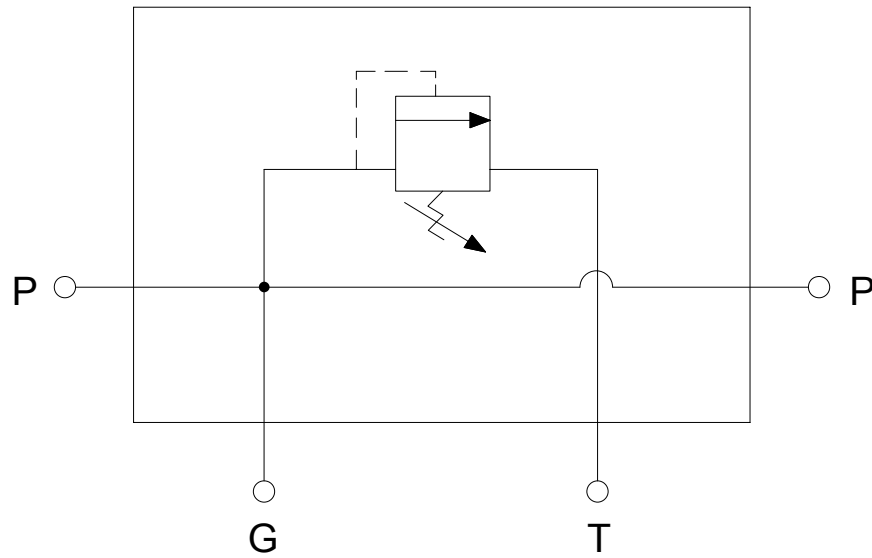
Nominal Flow	15 GPM (57 LPM)
Rated Operating Pressure	4000 PSI (276 bar)
Viscosity Range	36 to 3000 SSU (3 to 647 cSt)
Filtration	30 micron nominal
Media Operating Temp. Range	-40° to 250°F (-40° to 120°C)
Operating Fluid Media	General Purpose Hydraulic Fluid
Cartridge Size	Delta Series 7/8-14 Thread
Cartridge Torque Requirements	30 ft-lbs (40.6 Nm)

DIMENSIONS



WARNING: the specifications/application data shown in our catalogs and data sheets are intended only as a general guide for the product described (herein). Any specific application should not be undertaken without independent study, evaluation, and testing for suitability.

TYPICAL SCHEMATIC



CIRCUIT RA

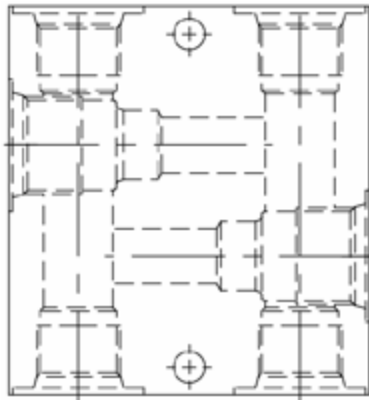
ORDERING INFORMATION

CIRCUITS		OPTIONS		PRESSURE RANGE	
RA		Buna Standard	00	40	100-4000 PSI
		Viton Standard	V0		

FOR SPECIAL PRESET VALUES ON VALVES, CONSULT FACTORY

PRE-ENGINEERED CIRCUIT, OPTION **MODEL S***

BASE BODY - 20200020 = #8 SAE



BODY WEIGHT: 1.2 lbs (.54 kg)

DESCRIPTION

Pre-engineered circuit, option model S*.

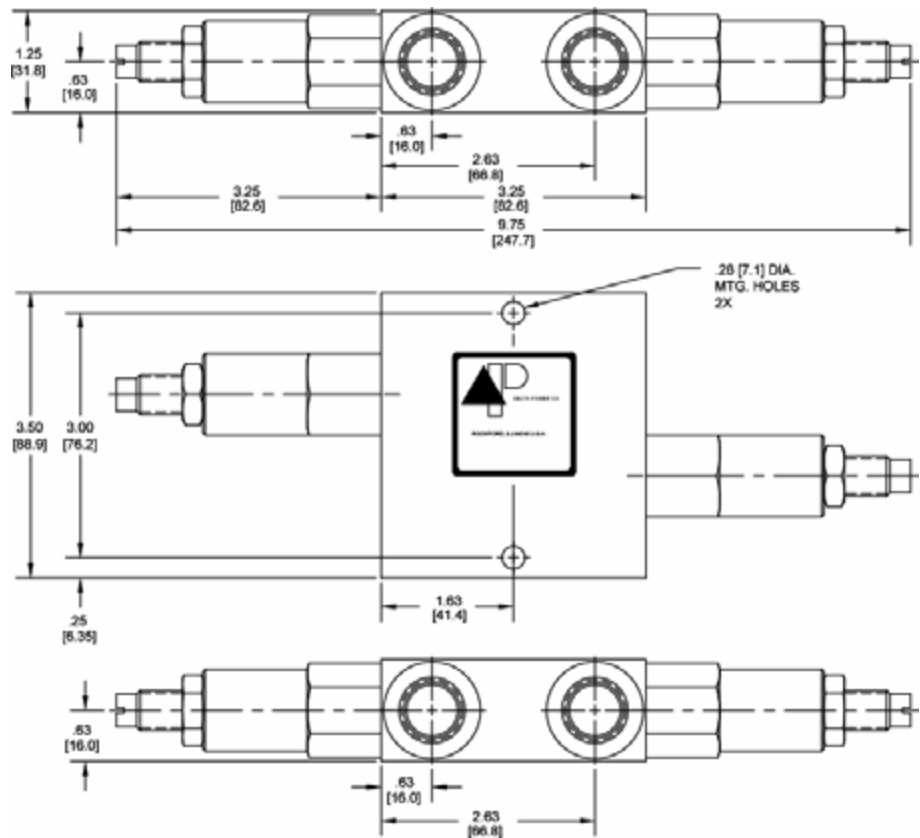
OPERATION

See options chart for specific operation.

VALVE SPECIFICATIONS

Nominal Flow	See Options Chart for Flow Range
Rated Operating Pressure	See Options Chart for Pres. Range
Viscosity Range	36 to 3000 SSU (3 to 647 cSt)
Filtration	30 micron nominal
Media Operating Temp. Range	-40° to 250°F (-40° to 120°C)
Operating Fluid Media	General Purpose Hydraulic Fluid
Cartridge Size	Delta Series 7/8-14 Thread
Cartridge Torque Requirements	30 ft-lbs (40.6 Nm)
Coil Torque Nut Requirements	6 ft-lbs (8.1 Nm)

DIMENSIONS



WARNING: the specifications/application data shown in our catalogs and data sheets are intended only as a general guide for the product described (herein). Any specific application should not be undertaken without independent study, evaluation, and testing for suitability.

