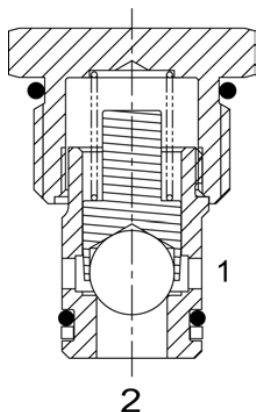


DE-CVC DIRECT ACTING CHECK VALVE, GUIDED BALL



DESCRIPTION

10 size, 7/8-14 thread, "Delta" series, direct acting check valve.

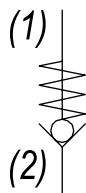
OPERATION

The DE-CVC allows free flow passage from (2) to (1), and blocks flow from (1) to (2). The cartridge has a fully guided hardened ball, which is spring-biased closed, until sufficient pressure is applied at (2) to open to (1).

FEATURES

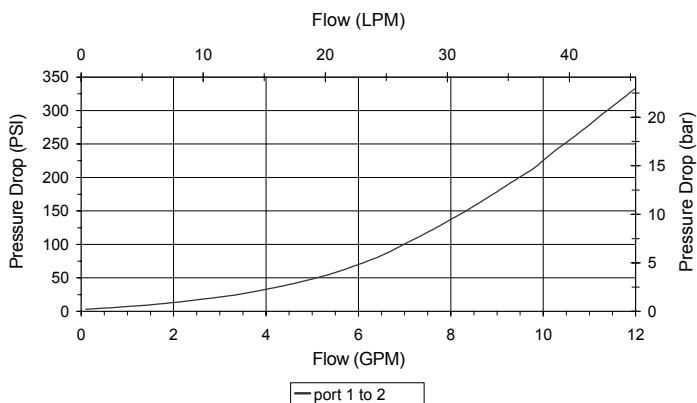
- Hardened parts for long life and low leakage.
- Optional bias springs for backpressure application flexibility.
- Fully guided ball assembly.
- Industry common cavity.

HYDRAULIC SYMBOL



PERFORMANCE

Actual Test Data (Cartridge Only)

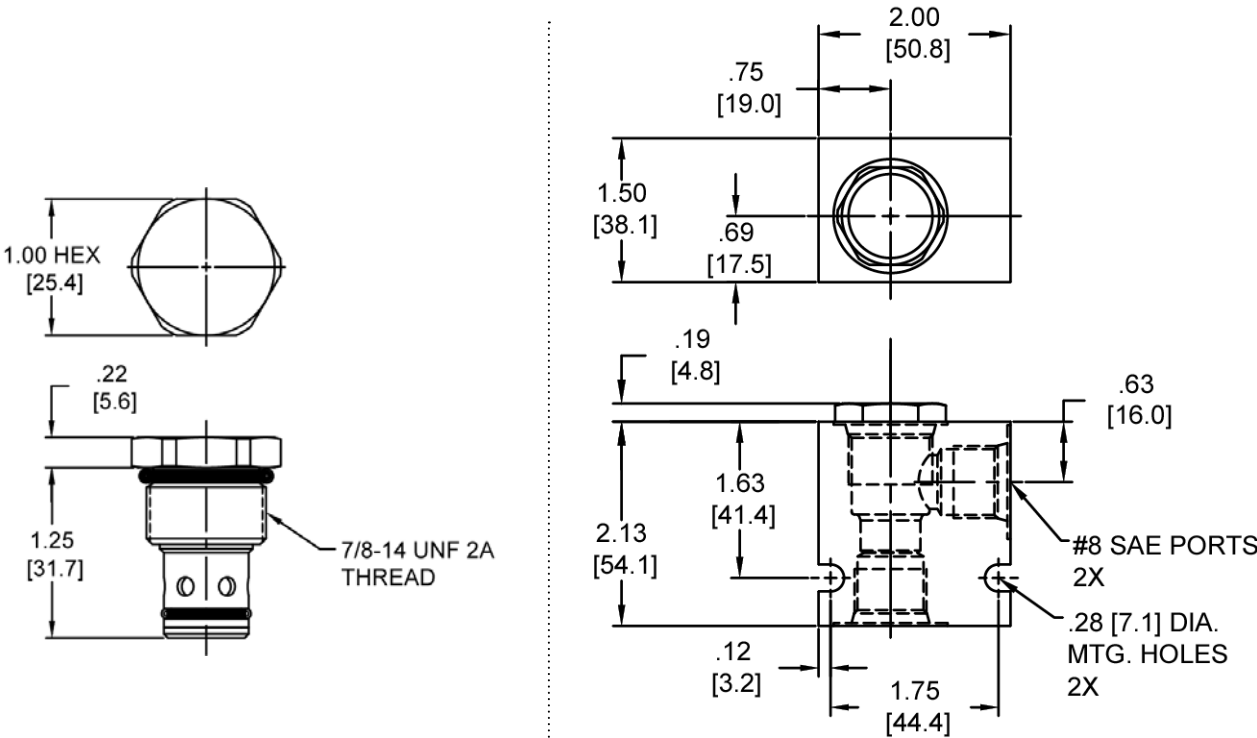


VALVE SPECIFICATIONS

Nominal Flow	8 GPM (30 LPM)
Rated Operating Pressure	3500 PSI (241 bar)
Typical Internal Leakage (150 SSU)	0-5 drops/min
Viscosity Range	36 to 3000 SSU (3 to 647 cSt)
Filtration	ISO 18/16/13
Media Operating Temp. Range	-40° to 250°F (-40° to 120°C)
Weight	.15 lbs (.07 kg)
Operating Fluid Media	General Purpose Hydraulic Fluid
Cartridge Torque Requirements	30 ft-lbs (40.6 Nm)
Cavity	DELTA 2W
Cavity Form Tool (Finishing)	40500000
Seal Kit	21191200

WARNING: the specifications/application data shown in our catalogs and data sheets are intended only as a general guide for the product described (herein). Any specific application should not be undertaken without independent study, evaluation, and testing for suitability.

DIMENSIONS



Body Weight: .47 lbs (.21 kg)

ORDERING INFORMATION

DE-CVC		-	-	-	-
		OPTIONS		BODIES	
		Buna Standard 00		Blank	
		Viton Standard V0		N	
				S	
				Without Body	
				3/8" NPTF Ports	
				#8 SAE Ports	
				CRACK PRESSURE	
		0003		3 PSI	
		0005		5 PSI	
		0010		10 PSI	
		0020		20 PSI	
		0035		35 PSI	
		0050		50 PSI	
		0075		75 PSI	
		0095		95 PSI	
				± 10%	