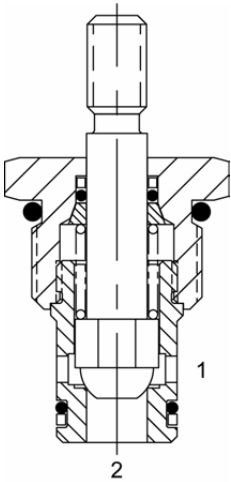


**DE-MCS** MANUAL POPPET VALVE, 2 WAY NORMALLY CLOSED, PULL TYPE, CORROSION RESISTANT



**DESCRIPTION**

10 size, 7/8-14 thread, "Delta" series, manual poppet valve, 2 way normally closed, pull type, corrosion resistant.

**OPERATION**

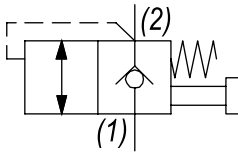
The DE-MCS blocks flow from (1) to (2) until an operator pulls the shaft outward. The bias spring allows for backpressure at (2) before the valve will open (see option page for pressure).

Note: pressure at port (2) will directly act on the spool and spring. Port (2) is intended to be a tank port only.

**FEATURES**

- Hardened parts for long life.
- Industry common cavity.
- Corrosion resistant.
- Optional bias springs for backpressure application flexibility.

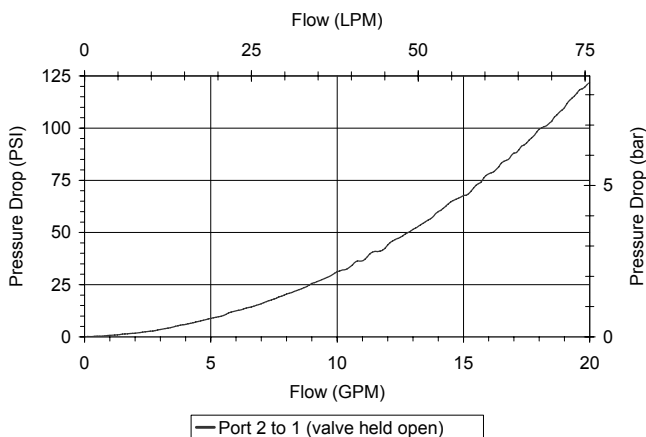
**HYDRAULIC SYMBOL**



65 PSI bias provides comfortable effort where return line is near zero. 160 PSI option may be difficult to pull, if tank pressure is near zero. Stainless Steel Shaft. Pressure above SPRING BIAS PRESSURE at port (2) may cause valve to self open.

**PERFORMANCE**

Actual Test Data (Cartridge Only)



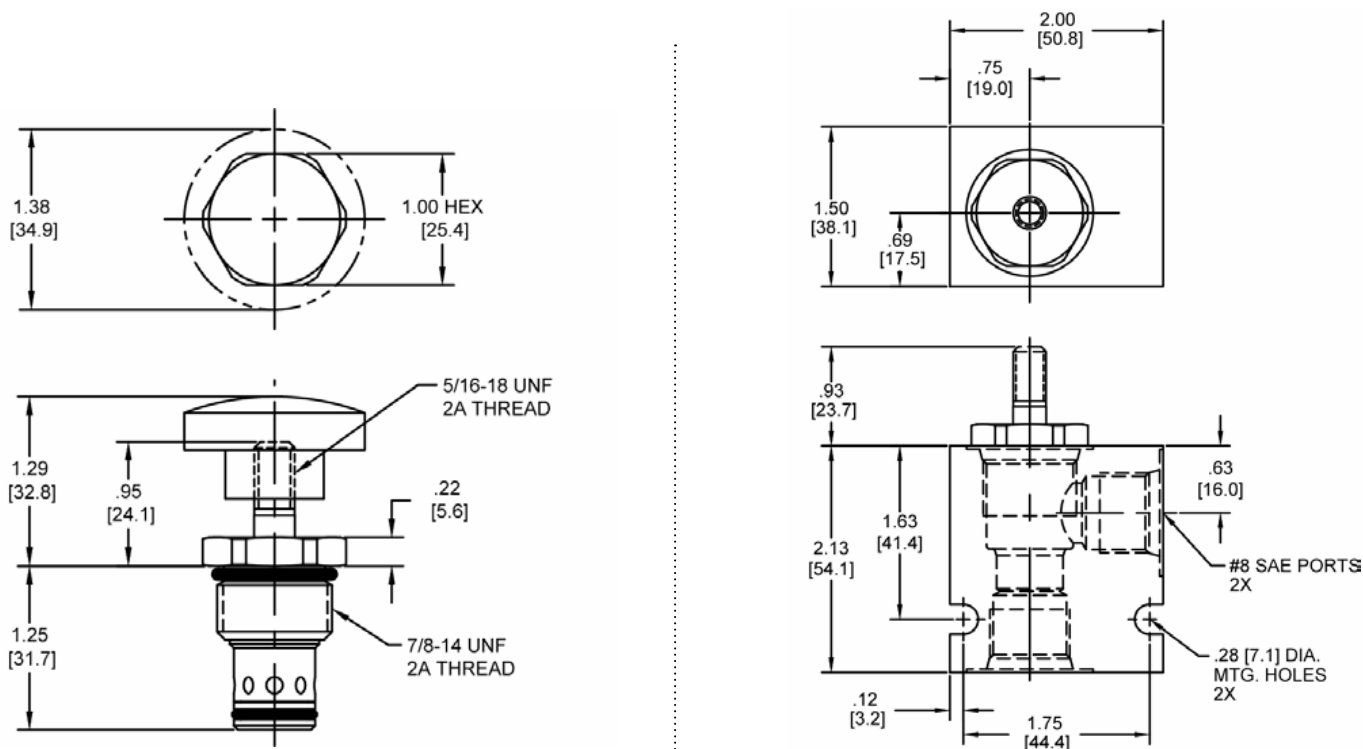
**VALVE SPECIFICATIONS**

Nominal Flow	20 GPM (76 LPM)
Rated Operating Pressure	3500 PSI (241 bar)
Typical Internal Leakage (150 SSU)	0-5 drops/min
Viscosity Range	36 to 3000 SSU (3 to 647 cSt)
Filtration	ISO 18/16/13
Media Operating Temp. Range	-40° to 250°F (-40° to 120°C)
Weight	.75 lbs (.34 kg)
Operating Fluid Media	General Purpose Hydraulic Fluid
Cartridge Torque Requirements	30 ft-lbs (40.6 Nm)
Cavity	DELTA 2W
Cavity Form Tool (Finishing)	40500000
Seal Kit	21191200

**WARNING:** the specifications/application data shown in our catalogs and data sheets are intended only as a general guide for the product described (herein). Any specific application should not be undertaken without independent study, evaluation, and testing for suitability.

Via Malavolti, 36 - 41122 Modena - ITALY - Phone +39 (059) 254895 - Fax +39 (059) 253512 - mail: [tecnord@tecnord.com](mailto:tecnord@tecnord.com) - [www.tecnord.com](http://www.tecnord.com)

DIMENSIONS



Body Weight: .47 lbs (.21 kg)

ORDERING INFORMATION

DE-MCS		-	-	-	-
<u>OPTIONS</u>					<u>BODIES</u>
Buna Standard	00			Blank	Without Body
Viton Standard	V0			N	3/8" NPTF Ports
Buna, Screen	A0			S	#8 SAE Ports
Viton, Screen	W0				
Buna, Knob	0K				
Viton, Knob	VK				
Buna, Knob, Screen	AK				
Viton, Knob, Screen	WK				
				<u>SPRING BIAS PRESSURE</u>	
			0065	65 PSI	
			0160	160 PSI	

Note: use screen only if flow direction is from (1) to (2).

Note: pressure above SPRING BIAS PRESSURE at port (2) may cause valve to self open.