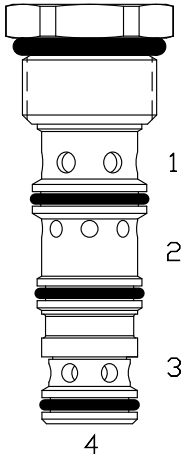


DG-CDP DOUBLE PILOT OPERATED CHECK VALVE



DESCRIPTION

10 size, 7/8 -14 thread, "Delta" series, double pilot operated check valve.

OPERATION

The DG-CDP allows flow to pass from (3) to (4) and (2) to (1). The valve blocks flow from (4) to (3) and from (1) to (2). Blocked flow is released when pilot pressure is applied to the port opposite of (3) and/or (2) respectively. The valve has a 3:1 pilot ratio, so at least 1/3 of the load pressure at port (4) or (1) is required at the pilot line ports "ports (4) or (1) respectively" to open the flow passage to allow flow from port (4) or (1) respectively. The check spring biased at 20 PSI (1.4 bar) to assure holding in the static or no-load conditions.

FEATURES

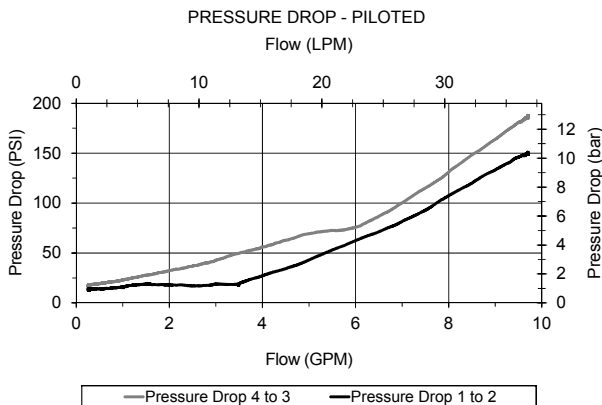
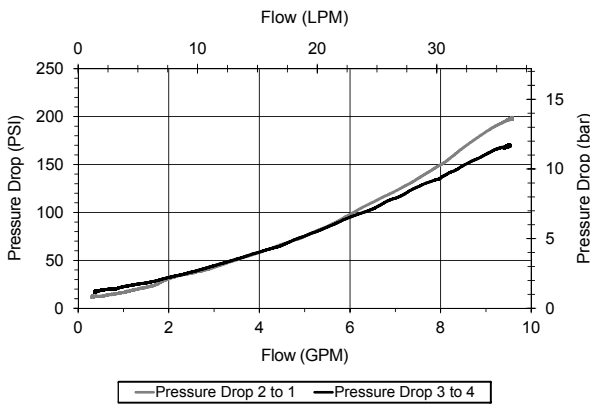
- Hardened parts for long life.
- Industry common cavity.



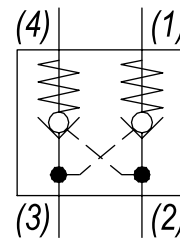
Great for "in Cylinder" use application.

PERFORMANCE

Actual Test Data (Cartridge Only)



HYDRAULIC SYMBOL



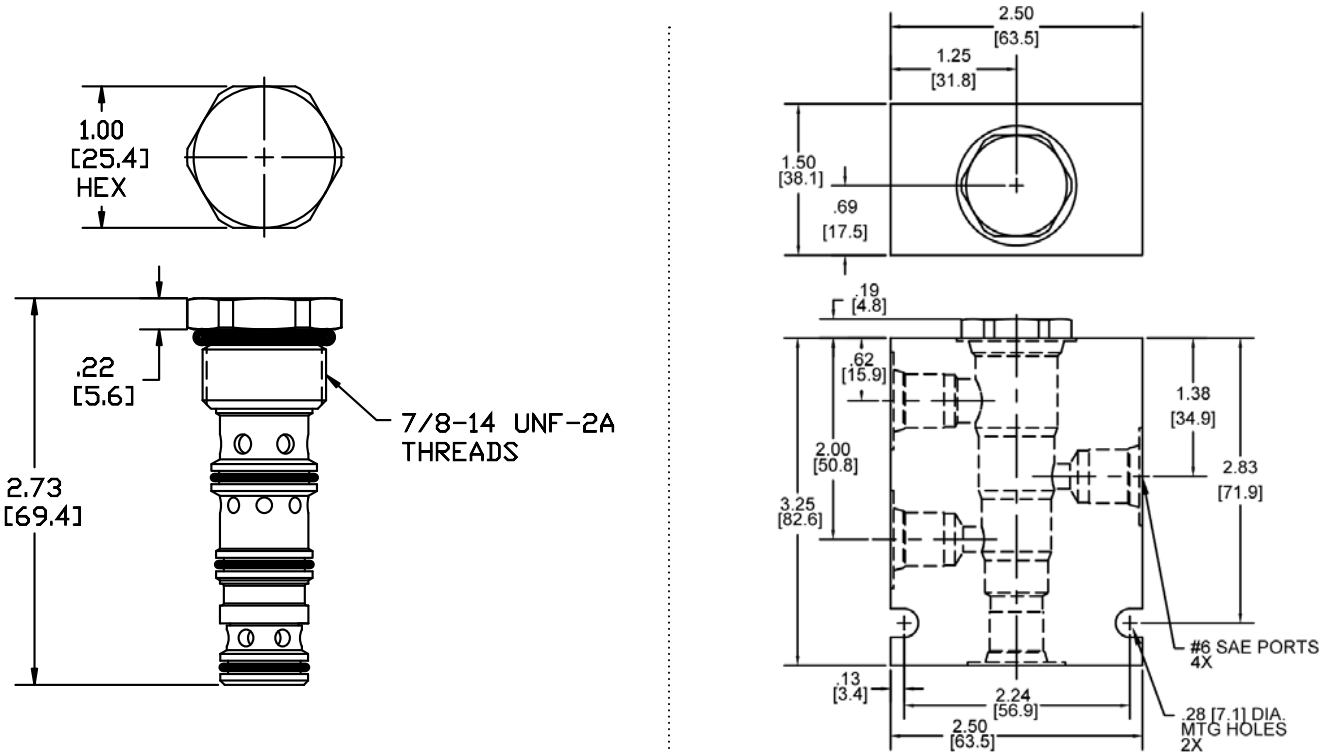
VALVE SPECIFICATIONS

Nominal Flow	8 GPM (30 LPM)
Rated Operating Pressure	3000 PSI (207 bar)
Typical Internal Leakage (150 SSU)	0-5 drops/min
Viscosity Range	36 to 3000 SSU (3 to 647 cSt)
Filtration	ISO 18/16/13
Media Operating Temp. Range	-40° to 250°F (-40° to 120°C)
Weight	.20 lbs (.09 kg)
Operating Fluid Media	General Purpose Hydraulic Fluid
Cartridge Torque Requirements	30 ft-lbs (40.6 Nm)
Cavity	DELTA 4W
Cavity Form Tool (Finishing)	40500002
Seal Kit	21191216

WARNING: the specifications/application data shown in our catalogs and data sheets are intended only as a general guide for the product described (herein). Any specific application should not be undertaken without independent study, evaluation, and testing for suitability.

Via Malavolti, 36 - 41122 Modena - ITALY - Phone +39 (059) 254895 - Fax +39 (059) 253512 - mail: tecnord@tecnord.com - www.tecnord.com

DIMENSIONS



Body Weight: .99 lbs (.45 kg)

ORDERING INFORMATION

