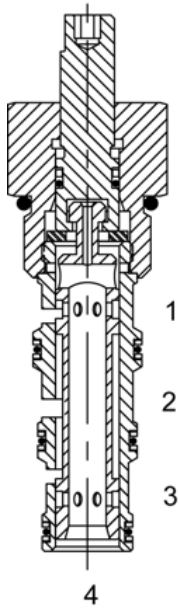


DG-M4A MANUAL SPOOL ROTARY VALVE, 4 WAY 2 POSITION, CRISS CROSS



DESCRIPTION

10 size, 7/8-14 thread, "Delta" series, manual rotary spool valve, 4 way 2 position, criss cross.

OPERATION

The DG-M4A, when rotated fully to clockwise position, the cartridge directs flow between (2) to (3) and (1) to (4). When rotated fully to counterclockwise position, the cartridge directs flow between (3) to (4) and (1) to (2). All ports are closed in transition.

FEATURES

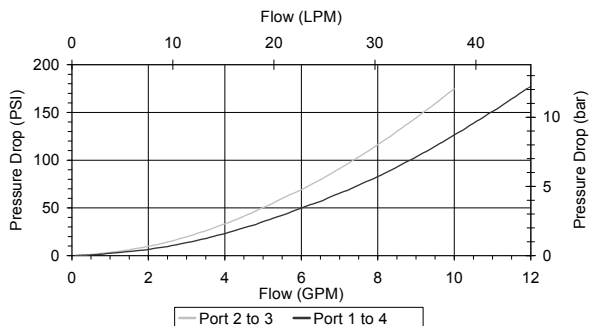
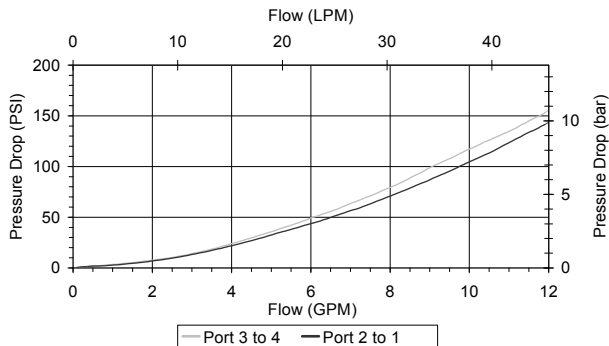
- Hardened parts for long life.
- Industry common cavity.



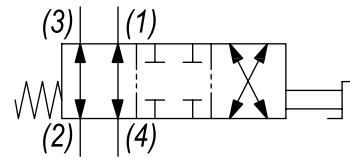
May be used as metering product. Valve has approximately 3.5 turns adjustment from extreme clockwise fully to counterclockwise positions. See chart for pressure drop in both positions.

PERFORMANCE

Actual Test Data (Cartridge Only)



HYDRAULIC SYMBOL



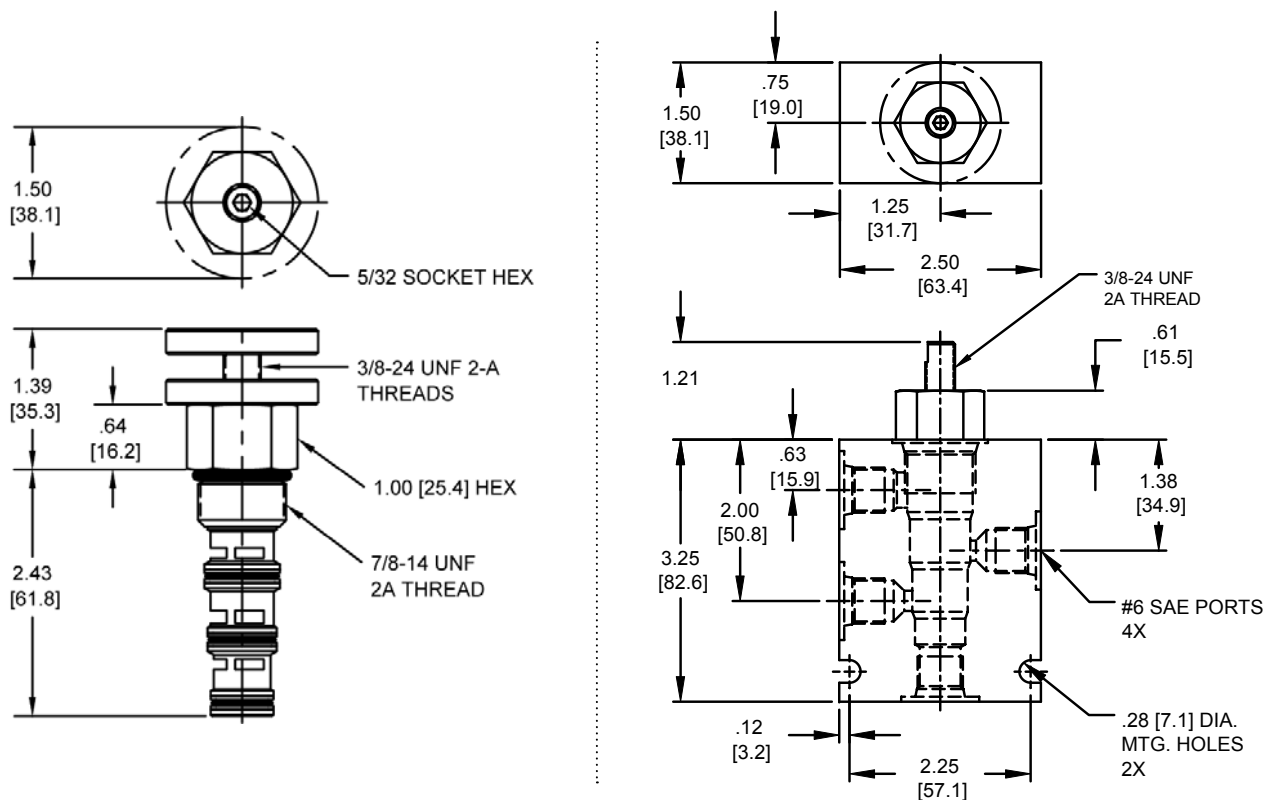
VALVE SPECIFICATIONS

Nominal Flow	10 GPM (38 LPM)
	8 GPM (30 LPM) from (2) to (3)
Rated Operating Pressure	3000 PSI (207 bar)
Typical Internal Leakage (150 SSU)	5 cu in/min (82 ml/min) per path
Viscosity Range	36 to 3000 SSU (3 to 647 cSt)
Filtration	ISO 18/16/13
Media Operating Temp. Range	-40° to 250°F (-40° to 120°C)
Weight	.32 lbs (.15 kg)
Operating Fluid Media	General Purpose Hydraulic Fluid
Cartridge Torque Requirements	30 ft-lbs (40.6 Nm)
Cavity	DELTA 4W
Cavity Form Tool (Finishing)	40500002
Seal Kit	21191214

WARNING: the specifications/application data shown in our catalogs and data sheets are intended only as a general guide for the product described (herein). Any specific application should not be undertaken without independent study, evaluation, and testing for suitability.

Via Malavolti, 36 - 41122 Modena - ITALY - Phone +39 (059) 254895 - Fax +39 (059) 253512 - mail: tecnord@tecnord.com - www.tecnord.com

DIMENSIONS



Body Weight: .99 lbs (.45 kg)

ORDERING INFORMATION

DG-M4A		-	-
OPTIONS			BODIES
Buna, Standard	00		Blank
Viton, Standard	V0		N
Buna, Knob	0K		S
Viton, Knob	VK		
			Without Body
			1/4" NPTF Ports
			#6 SAE Ports