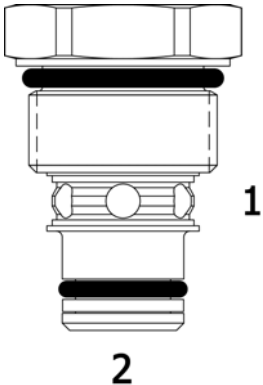


**HB-CVA** DIRECT ACTING CHECK VALVE, POPPET



**DESCRIPTION**

“High Pressure” 8 size, 3/4-16 thread, “Power” series, direct acting check valve.

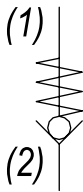
**OPERATION**

The HB-CVA allows free flow passage from (2) to (1), and blocks flow from (1) to (2). The cartridge has a fully guided check poppet, which is spring-biased closed until sufficient pressure is applied at (2) to open to (1).

**FEATURES**

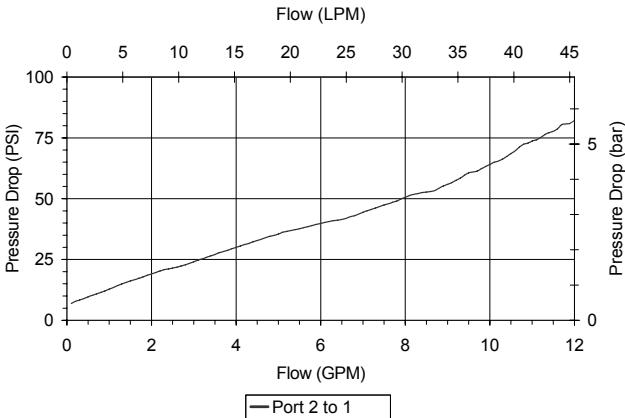
- Hardened parts for long life and low leakage.
- Optional bias springs for backpressure application flexibility.
- Fully guided poppet assembly.
- Industry common cavity.

**HYDRAULIC SYMBOL**



**PERFORMANCE**

Actual Test Data (Cartridge Only)

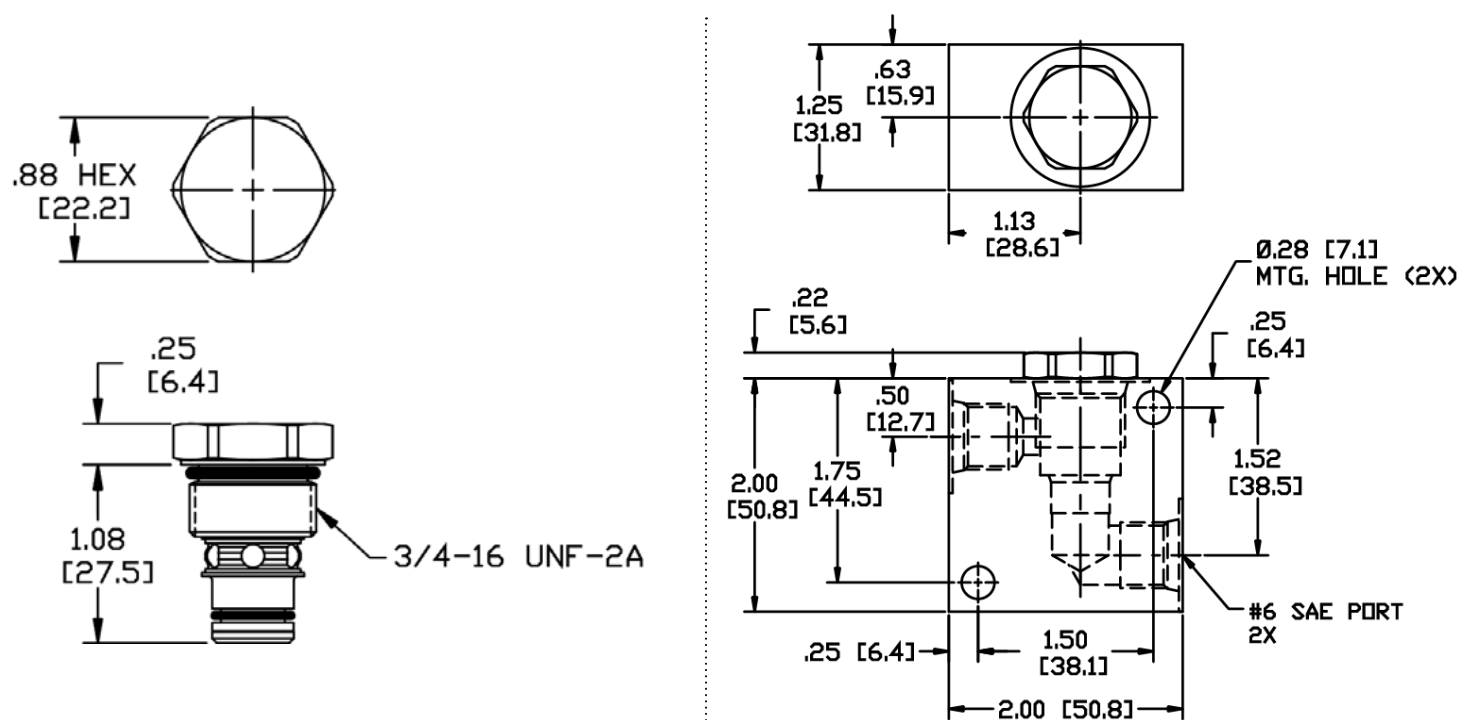


**VALVE SPECIFICATIONS**

Nominal Flow	10 GPM (38 LPM)
Rated Operating Pressure	4350 PSI (300 bar)
Typical Internal Leakage (150 SSU)	0-5 drops/min
Viscosity Range	36 to 3000 SSU (3 to 647 cSt)
Filtration	ISO 18/16/13
Media Operating Temp. Range	-40° to 250°F (-40° to 120°C)
Weight	.10 lbs (.05 kg)
Operating Fluid Media	General Purpose Hydraulic Fluid
Cartridge Torque Requirements	35 ft-lbs (47 Nm)
Cavity	POWER 2W
Cavity Form Tool (Finishing)	40500005
Seal Kit	21191100

**WARNING:** the specifications/application data shown in our catalogs and data sheets are intended only as a general guide for the product described (herein). Any specific application should not be undertaken without independent study, evaluation, and testing for suitability.

DIMENSIONS



Body Weight: .40 lbs (.18 kg)

ORDERING INFORMATION

HB-CVA		-	-	-	-
		<b>OPTIONS</b>		<b>BODIES</b>	
		Buna Standard 00		Blank	
		Viton Standard V0		N	
				S	
				<b>CRACK PRESSURE</b>	
				0005 5 PSI	
				0010 10 PSI	
				0030 30 PSI	
				0070 70 PSI	
				± 10%	

Note: Aluminum, NOT durability rated for 4350 PSI. Consult factory for options.

**WARNING:** the specifications/application data shown in our catalogs and data sheets are intended only as a general guide for the product described (herein). Any specific application should not be undertaken without independent study, evaluation, and testing for suitability.