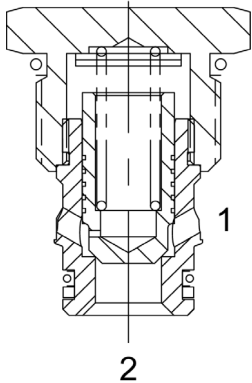


HE-CVA DIRECT ACTING CHECK VALVE, POPPET**DESCRIPTION**

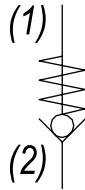
"High Pressure" 10 size, 7/8-14 thread, "Delta" series, direct acting check valve.

OPERATION

The HE-CVA allows free flow passage from (2) to (1), and blocks flow from (1) to (2). The cartridge has a fully guided check poppet, which is spring-biased closed, until sufficient pressure is applied at (2) to open to (1).

FEATURES

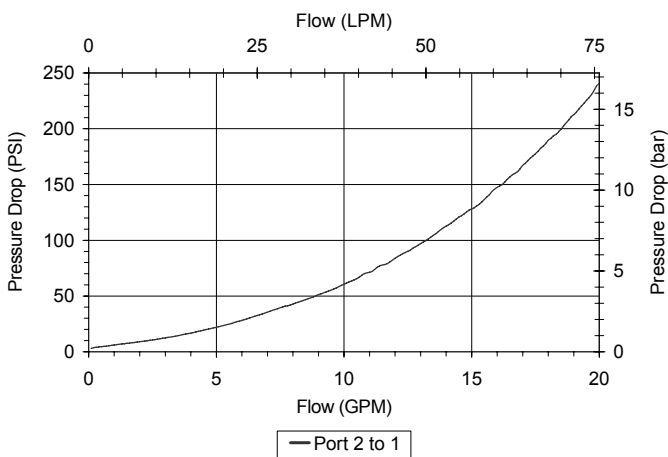
- Hardened parts for long life and low leakage.
- Optional bias springs for backpressure application flexibility.
- Fully guided poppet assembly.
- Industry common cavity.

HYDRAULIC SYMBOL

Drop-In pilot pistons can be used (except the 135 and 150 PSI version) to create P.O. Check Valve Function, see the Hydraulic Integrated Circuits section for details.

PERFORMANCE

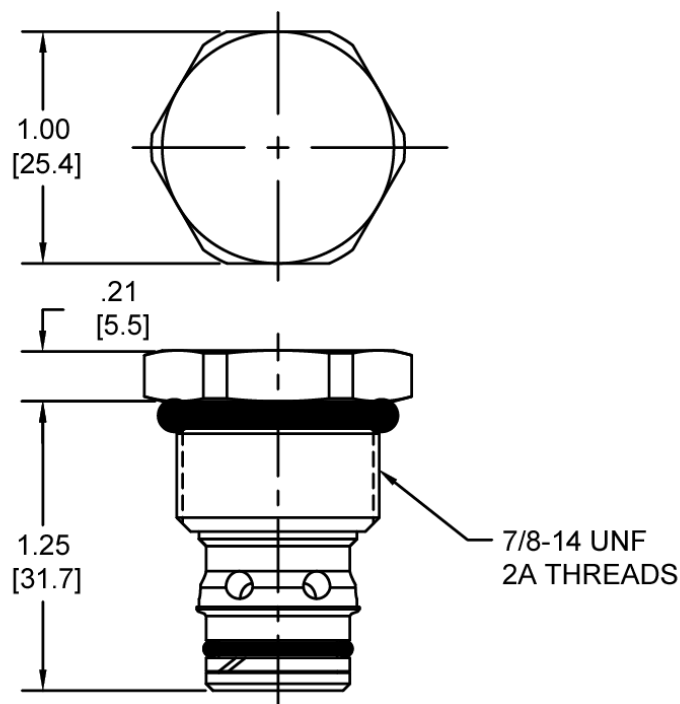
Actual Test Data (Cartridge Only)

**VALVE SPECIFICATIONS**

Nominal Flow	15 GPM (57 LPM)
Rated Operating Pressure	5000 PSI (345 bar)
Typical Internal Leakage (150 SSU)	0-5 drops/min
Viscosity Range	36 to 3000 SSU (3 to 647 cSt)
Filtration	ISO 18/16/13
Media Operating Temp. Range	-40° to 250°F (-40° to 120°C)
Weight	1.23 lbs (.56 kg)
Operating Fluid Media	General Purpose Hydraulic Fluid
Cartridge Torque Requirements	50 ft-lbs (67.8 Nm)
Cavity	DELTA 2W
Cavity Form Tool (Finishing)	40500000
Seal Kit	21191200

WARNING: the specifications/application data shown in our catalogs and data sheets are intended only as a general guide for the product described (herein). Any specific application should not be undertaken without independent study, evaluation, and testing for suitability.

DIMENSIONS



ORDERING INFORMATION

HE-CVA		-	-	-	-
		<u>OPTIONS</u>		<u>BODIES</u>	
		Buna Standard 00		Consult Factory	
		Viton Standard V0			
				<u>CRACK PRESSURE</u>	
				0005 5 PSI	
				0010 10 PSI	
				0020 20 PSI	
				0035 35 PSI	
				0070 70 PSI	
				0090 90 PSI	
				0135 135 PSI	
				0150 150 PSI	
				± 10%	

WARNING
DO NOT USE ALUMINUM BODY
HIGH PRESSURE (5000 PSI) PRODUCT

WARNING: the specifications/application data shown in our catalogs and data sheets are intended only as a general guide for the product described (herein). Any specific application should not be undertaken without independent study, evaluation, and testing for suitability.