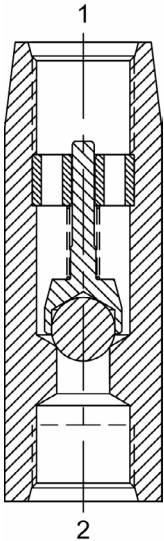


IM-CVA INLINE CHECK VALVE



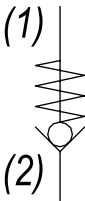
DESCRIPTION

#8 SAE, inline check valve.

OPERATION

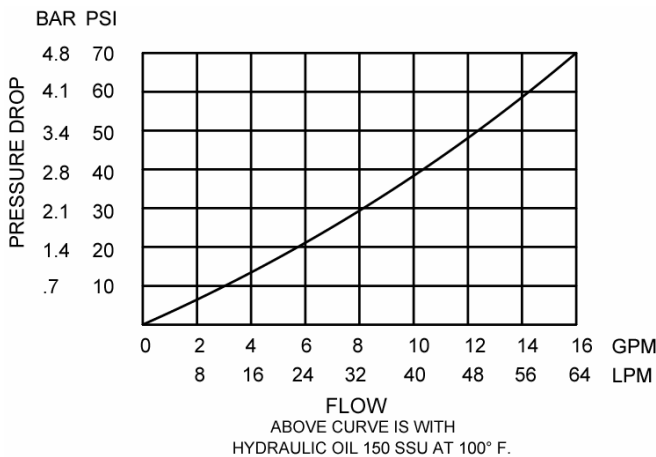
The IM-CVA allows flow from (2) to (1), while normally blocking oil flow from (1) to (2). The valve has a guided check ball, which is spring-biased closed until sufficient pressure is applied at (2) to open to (1).

HYDRAULIC SYMBOL



PERFORMANCE

Actual Test Data (Cartridge Only)



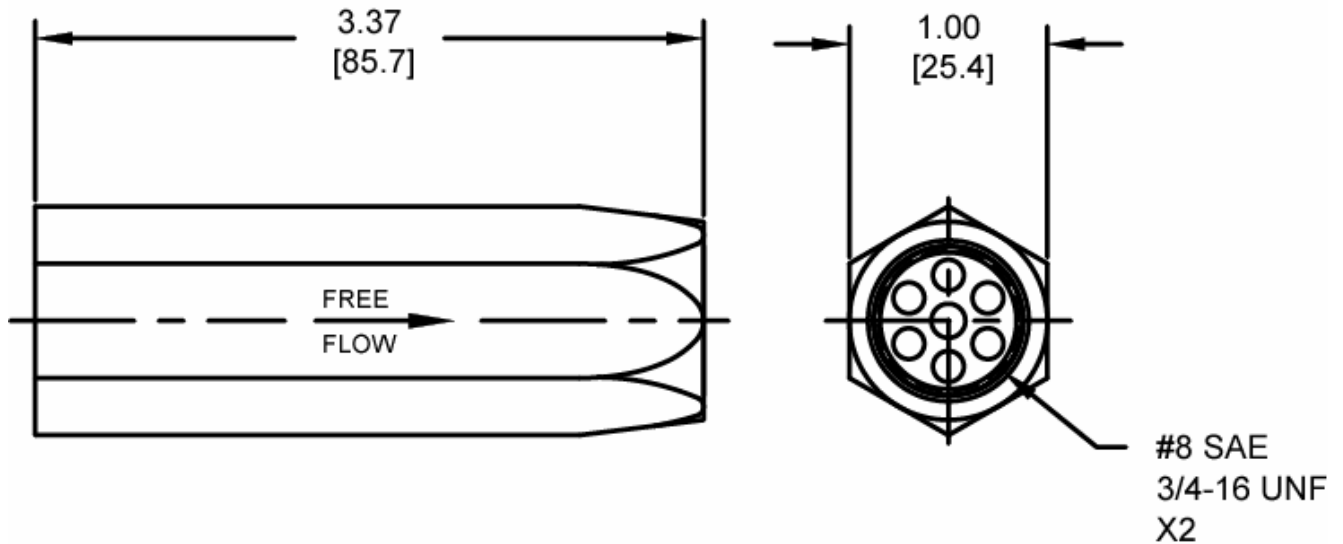
VALVE SPECIFICATIONS

Nominal Flow	8 GPM (30 LPM)
Rated Operating Pressure	3000 PSI (207 bar)
Typical Internal Leakage (150 SSU)	0-5 drops/min
Viscosity Range	36 to 3000 SSU (3 to 647 cSt)
Filtration	ISO 18/16/13
Media Operating Temp. Range	-40° to 250°F (-40° to 120°C)
Weight	.53 lbs (.24 kg)
Operating Fluid Media	General Purpose Hydraulic Fluid

WARNING: the specifications/application data shown in our catalogs and data sheets are intended only as a general guide for the product described (herein). Any specific application should not be undertaken without independent study, evaluation, and testing for suitability.

Via Malavolti, 36 - 41122 Modena - ITALY - Phone +39 (059) 254895 - Fax +39 (059) 253512 - mail: tecnord@tecnord.com - www.tecnord.com

DIMENSIONS



ORDERING INFORMATION

IM-CVA

OPTIONS

Buna Standard

CRACK PRESSURE

00 0005 5 PSI
0025 25 PSI
0050 50 PSI
0075 75 PSI