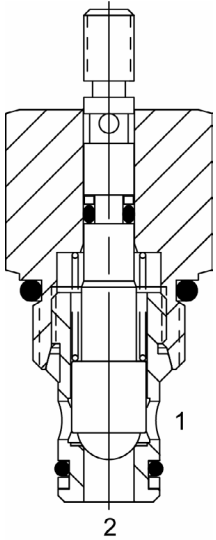


**PB-MCA** MANUAL POPPET VALVE, 2 WAY NORMALLY CLOSED, PULL TYPE**DESCRIPTION**

8 size, 3/4-16 thread, "Power" series, manual poppet, 2 way normally closed, pull type valve.

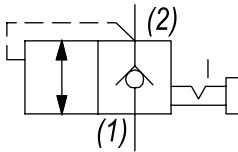
**OPERATION**

The PB-MCA blocks flow from (1) to (2) until an operator pulls the shaft outward. The bias spring (see option page for pressure) allows for backpressure at (2) before the valve will open.

Note: pressure at port (2) will act directly on the poppet and spring. Port (2) is intended to be a tank port only.

**FEATURES**

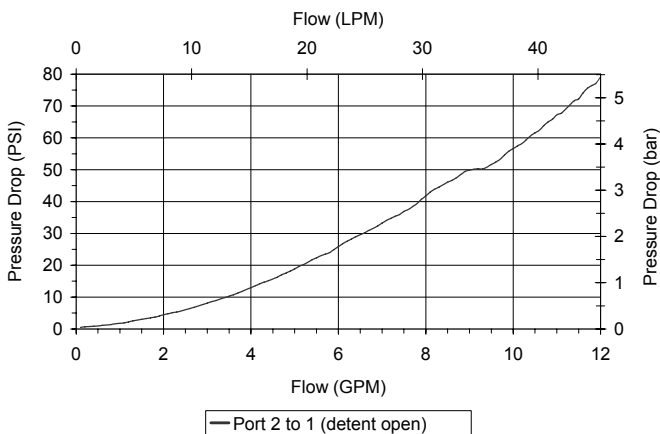
- Hardened parts for long life.
- Industry common cavity.
- Optional bias springs for backpressure application flexibility.

**HYDRAULIC SYMBOL**

75 PSI bias provides comfortable effort where return line is near zero. 150 PSI option may be difficult to pull, if tank pressure is near zero. Pressure above SPRING BIAS PRESSURE at port (2) may cause valve to self open.

**PERFORMANCE**

Actual Test Data (Cartridge Only)

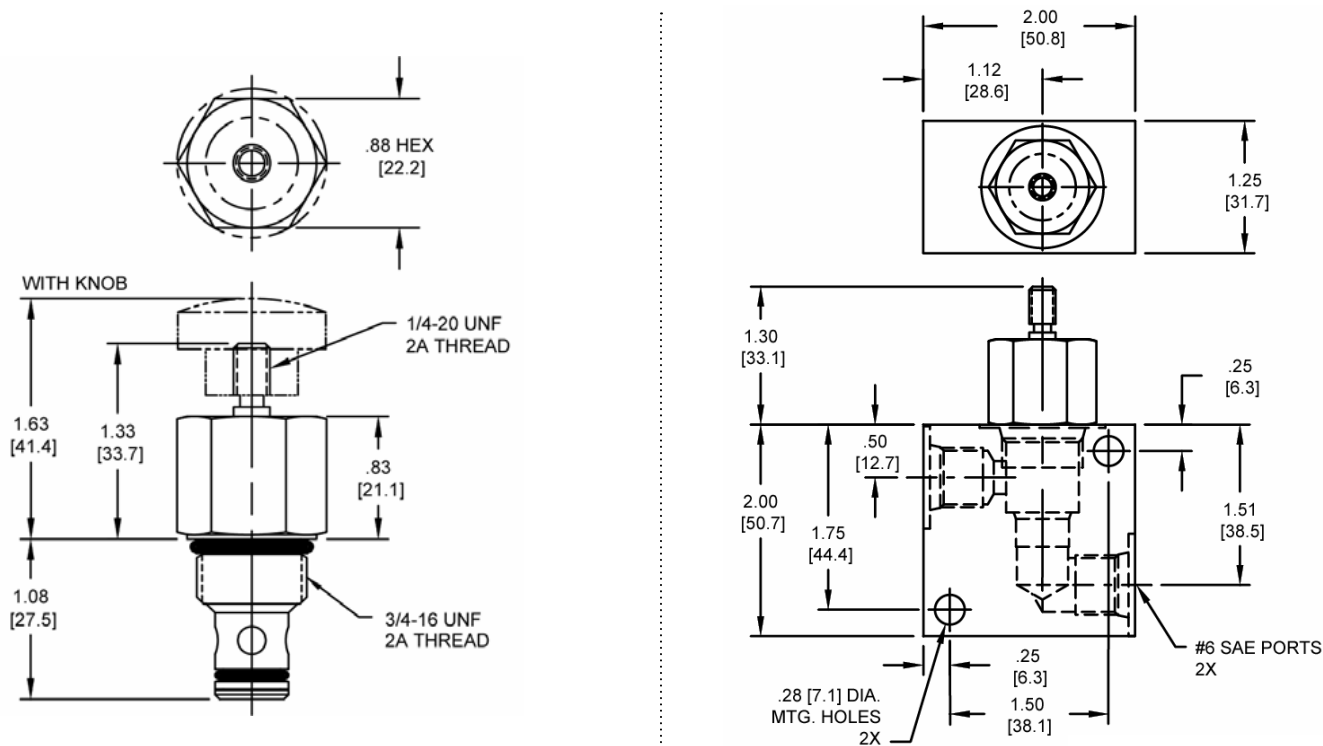
**VALVE SPECIFICATIONS**

Nominal Flow	12 GPM (45 LTR/M)
Rated Operating Pressure	3500 PSI (241 bar)
Typical Internal Leakage (150 SSU)	0-5 drops/min
Viscosity Range	36 to 3000 SSU (3 to 647 cSt)
Filtration	ISO 18/16/13
Media Operating Temp. Range	-40° to 250°F (-40° to 120°C)
Weight	.21 lbs (.10 kg)
Operating Fluid Media	General Purpose Hydraulic Fluid
Cartridge Torque Requirements	25 ft-lbs (34 Nm)
Cavity	POWER 2W
Cavity Form Tool (Finishing)	40500005
Seal Kit	21191100

**WARNING:** the specifications/application data shown in our catalogs and data sheets are intended only as a general guide for the product described (herein). Any specific application should not be undertaken without independent study, evaluation, and testing for suitability.

Via Malavolti, 36 - 41122 Modena - ITALY - Phone +39 (059) 254895 - Fax +39 (059) 253512 - mail: [tecnord@tecnord.com](mailto:tecnord@tecnord.com) - [www.tecnord.com](http://www.tecnord.com)

DIMENSIONS



Body Weight: .39 lbs (.18 kg)

ORDERING INFORMATION

PB-MCA		-	-	-	-
<b>OPTIONS</b>					<b>BODIES</b>
Buna Standard	00				Blank Without Body
Viton Standard	V0				N 1/4" NPT Ports
Buna, Screen	A0				S #6 SAE Ports
Viton, Screen	W0				
Buna, Knob	0K				
Viton, Knob	VK				
Buna, Knob, Screen	AK				
Viton, Knob, Screen	WK				
Buna, Detent	0D				
Viton, Detent	VD				
Buna, Screen, Detent	AD				
Viton, Screen, Detent	WD				
Buna, Knob, Detent	1D				
Viton, Knob, Detent	2D				
Buna, Knob, Screen, Detent	3D				
Viton, Knob, Screen, Detent	4D				

SPRING BIAS PRESSURE

0075 75 PSI  
0150 150 PSI

Note: pressure above SPRING BIAS PRESSURE at port (2) may cause valve to self open.

Note: use screen only if flow direction is from (1) to (2).