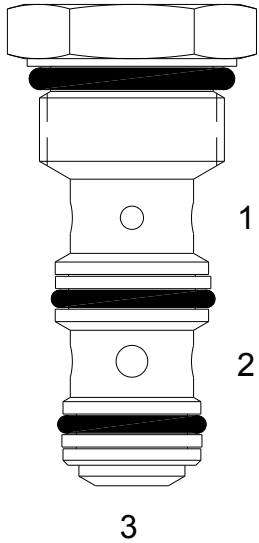


**PP-CSB SHUTTLE VALVE****DESCRIPTION**

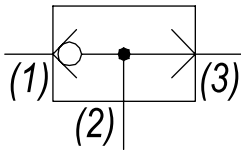
8 size, 3/4-16 thread, "Power" series, shuttle valve.

**OPERATION**

The PP-CSB allows flow from the higher pressure of (1) or (3) to (2). The valve is commonly used as a load sense to direct oil from the pressure side of a bidirectional hydraulic motor to a pressure released hydraulic brake.

**FEATURES**

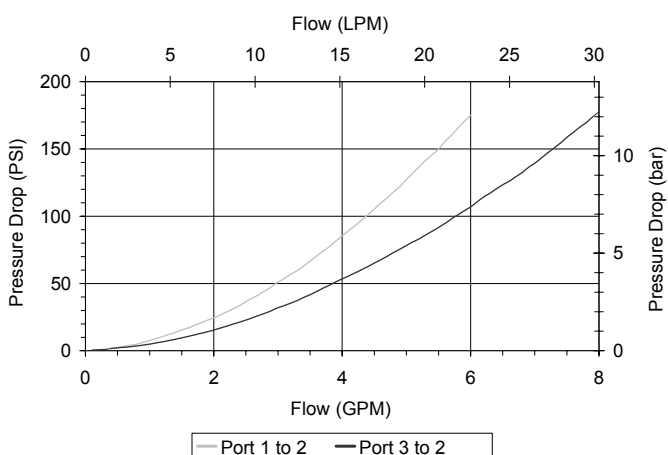
- Hardened parts for long life.
- Industry common cavity.

**HYDRAULIC SYMBOL**

*Tangency connections to cavity are not recommended.  
Inlet to port (2) is not recommended.  
Do not use orifice disk under cartridge valve.*

**PERFORMANCE**

Actual Test Data (Cartridge Only)

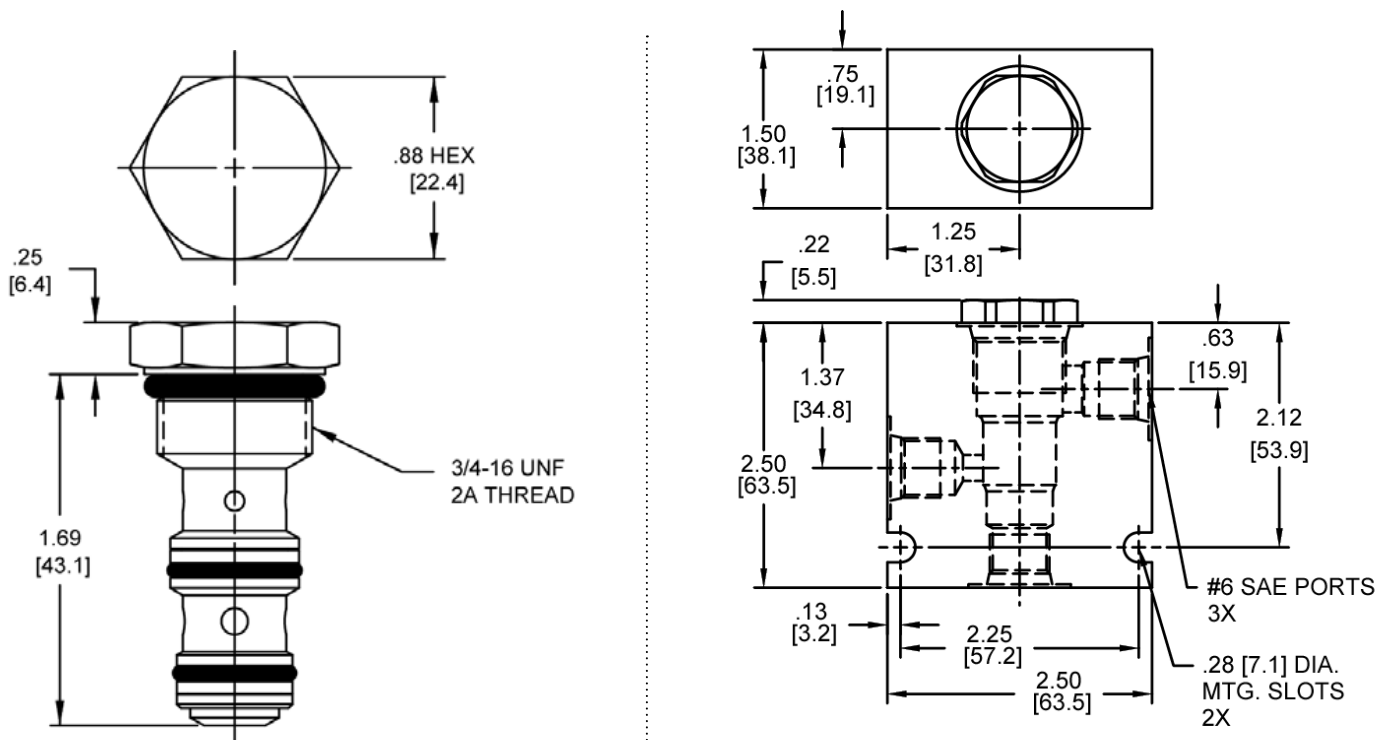
**VALVE SPECIFICATIONS**

Nominal Flow	6 GPM (23 LTR/M)
Rated Operating Pressure	3500 PSI (241 bar)
Typical Internal Leakage (150 SSU)	1 cu in/min (16 ml/min)
Viscosity Range	36 to 3000 SSU (3 to 647 cSt)
Filtration	ISO 18/16/13
Media Operating Temp. Range	-40° to 250°F (-40° to 120°C)
Weight	.16 lbs (.07 kg)
Operating Fluid Media	General Purpose Hydraulic Fluid
Cartridge Torque Requirements	25 ft-lbs (34 Nm)
Cavity	POWER 3W
Cavity Form Tool (Finishing)	40500024
Seal Kit	21191104

**WARNING:** the specifications/application data shown in our catalogs and data sheets are intended only as a general guide for the product described (herein). Any specific application should not be undertaken without independent study, evaluation, and testing for suitability.

Via Malavolti, 36 - 41122 Modena - ITALY - Phone +39 (059) 254895 - Fax +39 (059) 253512 - mail: [tecnord@tecnord.com](mailto:tecnord@tecnord.com) - [www.tecnord.com](http://www.tecnord.com)

## DIMENSIONS



*Body Weight: .56 lbs (.25 kg)*

## ORDERING INFORMATION

<b>PP-CSB</b>	<b>-</b>		<b>-</b>	
		└───		└───
		<b><u>OPTIONS</u></b>		<b><u>BODIES</u></b>
Buna, Standard	<b>00</b>		<b>Blank</b>	Without Body
Viton, Standard	<b>V0</b>		<b>N</b>	1/4" NPTF Ports
			<b>S</b>	#6 SAE Ports