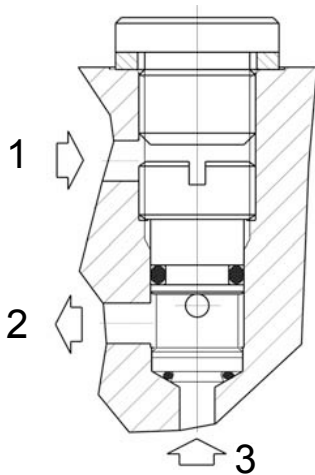


**QS-CSB SHUTTLE VALVE, INSERT TYPE****DESCRIPTION**

Special cavity, insert type, shuttle valve.

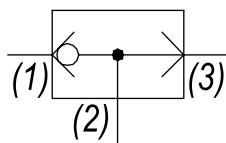
**OPERATION**

The QS-CSB allows flow from the higher pressure of (1) or (3) to (2). QS-CSB is an insert type valve, cavity must be plugged with a M10x1 plug.

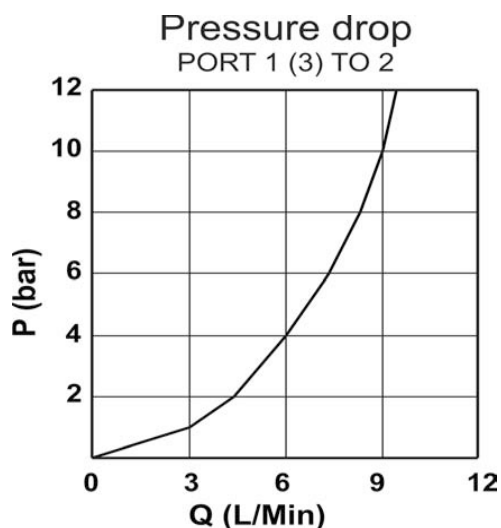
The valve is commonly used as a load sense to direct oil from the pressure side of a bidirectional hydraulic motor to a pressure released hydraulic brake.

**FEATURES**

- Hardened parts for long life.

**HYDRAULIC SYMBOL****PERFORMANCE**

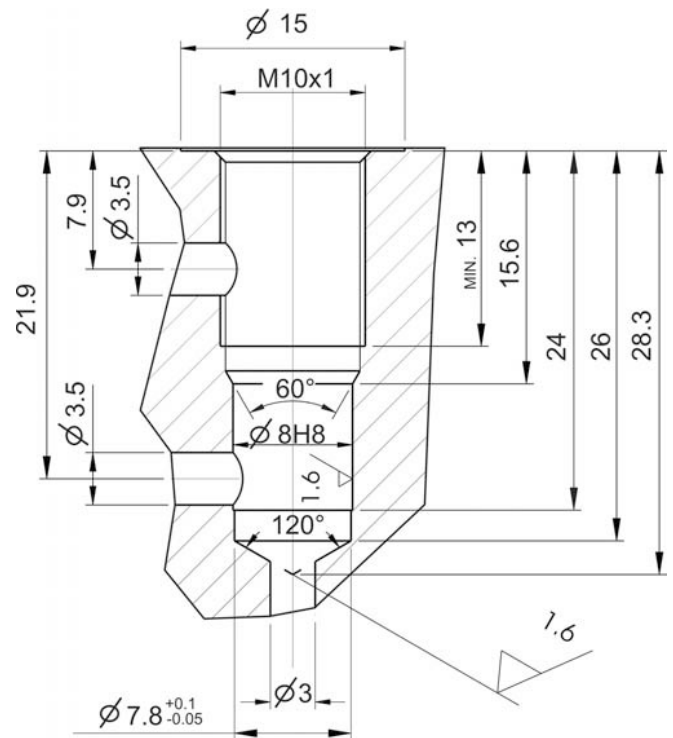
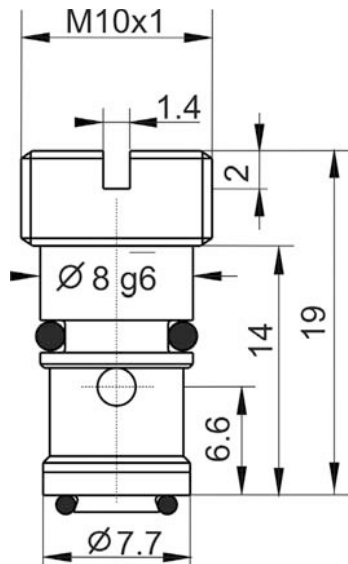
Actual Test Data (Cartridge Only)

**VALVE SPECIFICATIONS**

Nominal Flow	1 GPM (4 LPM)
Rated Operating Pressure	3500 PSI (241 bar)
Typical Internal Leakage (150 SSU)	1 cu in/min (16 ml/min)
Viscosity Range	36 to 3000 SSU (3 to 647 cSt)
Filtration	ISO 18/16/13
Media Operating Temp. Range	-40° to 250°F (-40° to 120°C)
Weight	.16 lbs (.07 kg)
Operating Fluid Media	General Purpose Hydraulic Fluid
Cartridge Torque Requirements	10 - 12 Nm
Cavity	T075
Cavity Tools Kit (form tool, reamer, tap)	K-T075

**WARNING:** the specifications/application data shown in our catalogs and data sheets are intended only as a general guide for the product described (herein). Any specific application should not be undertaken without independent study, evaluation, and testing for suitability.

## DIMENSIONS



## ORDERING INFORMATION

QS-CSB - - 00

**OPTIONS**

Buna Standard	00
Viton Standard	V0