

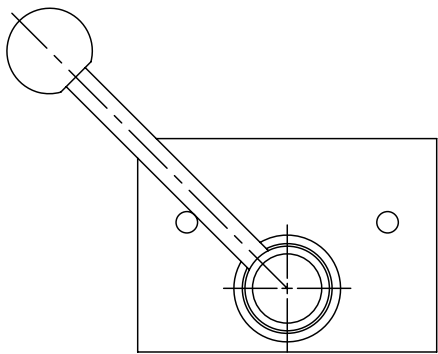
QS-MRS ROTARY SELECTOR VALVE

DESCRIPTION

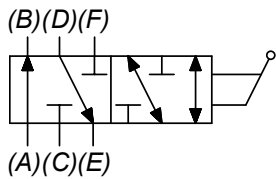
6 port rotary selector valve.

OPERATION

The QS-MRS when rotated counter-clockwise allows flow from (A) to (B) & (D) to (E) and blocks (C) & (F). When rotated clockwise, the valve directs flow from (C) to (B) & (F) to (E) and block flow at (A) & (D).



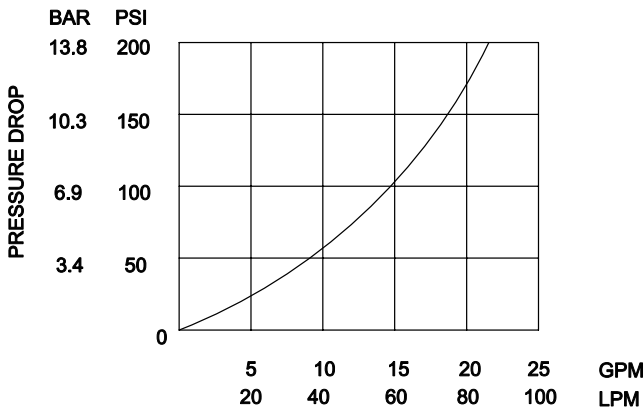
HYDRAULIC SYMBOL



May be used as metering product. All ports closed in transition. See chart for fully open and fully closed pressure drop.

PERFORMANCE

Actual Test Data (Cartridge Only)



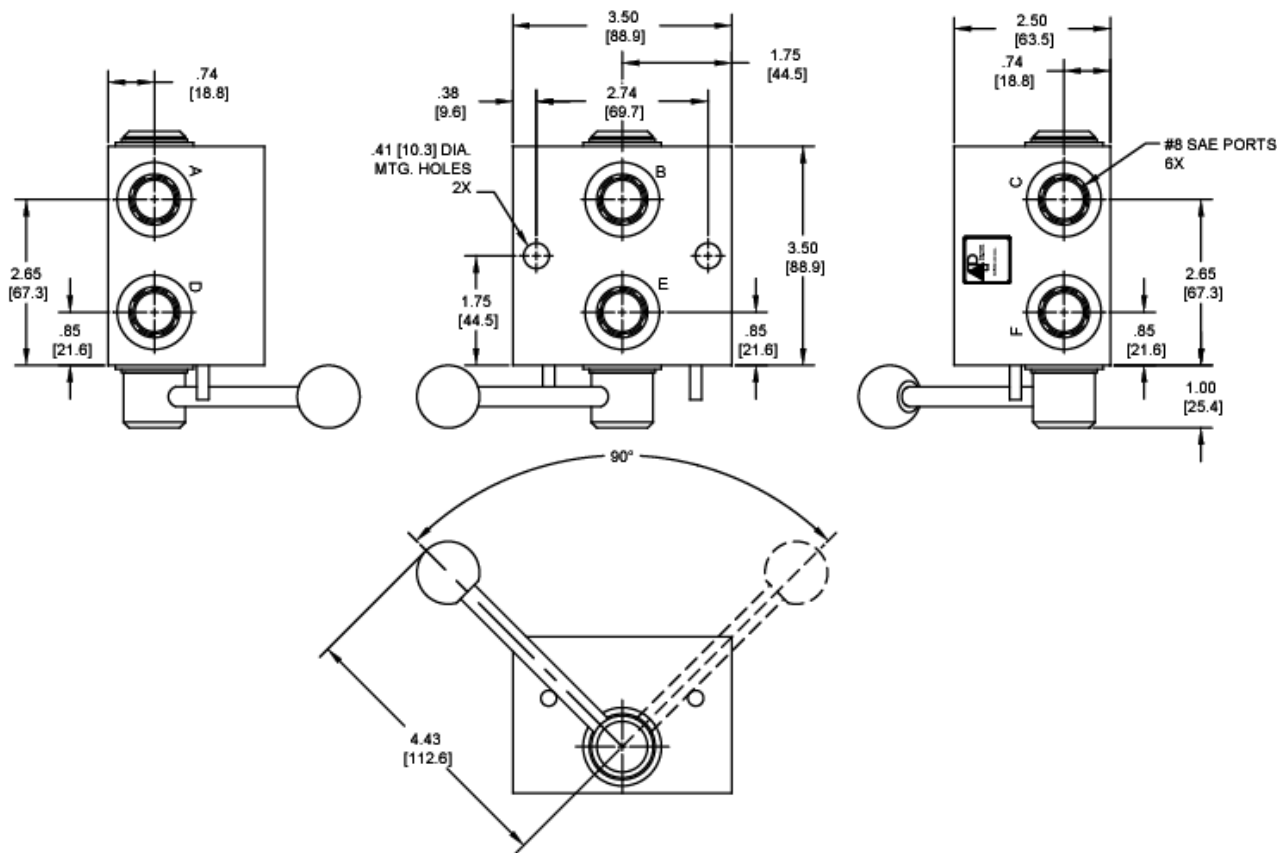
ABOVE CURVE IS WITH
HYDRAULIC OIL 150 SSU AT 100°F.

VALVE SPECIFICATIONS

| | |
|---------------------------------------|---------------------------------|
| Nominal Flow | 25 GPM (95 LTR/M) |
| Rated Operating Pressure | 3000 PSI (207 bar) |
| Typical Internal Leakage (150 SSU) | 1 cu in/min (16 ml/min) |
| Viscosity Range | 36 to 3000 SSU (3 to 647 cSt) |
| Filtration | ISO 18/16/13 |
| Media Operating Temp. Range | -40° to 250°F (-40° to 120°C) |
| Weight | 3.42 lbs (1.55 kg) |
| Operating Fluid Media | General Purpose Hydraulic Fluid |

WARNING: the specifications/application data shown in our catalogs and data sheets are intended only as a general guide for the product described (herein). Any specific application should not be undertaken without independent study, evaluation, and testing for suitability.

DIMENSIONS



ORDERING INFORMATION

| | | | |
|----------------|----|---|----------------|
| QS-MRS | - | - | - |
| | | | |
| OPTIONS | | | BODIES |
| Buna Standard | 00 | N | 1/2" NPT Ports |
| Viton Standard | V0 | S | #8 SAE Ports |