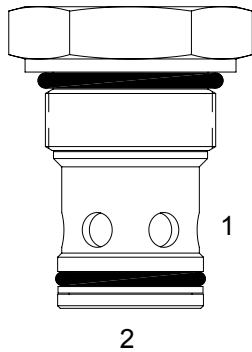


**SJ-CVA** DIRECT ACTING CHECK VALVE, POPPET



**DESCRIPTION**

16 size, 1 5/16-12 thread, "Super" series, direct acting check valve.

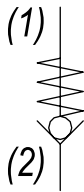
**OPERATION**

The SJ-CVA allows free flow from (2) to (1) and blocks flow from (1) to (2). The cartridge has a fully guided poppet, which is spring-biased closed, until sufficient pressure is applied at (2) to open to (1).

**FEATURES**

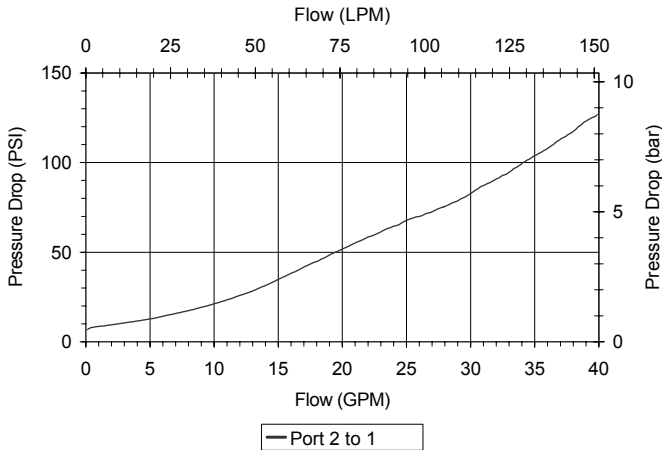
- Hardened parts for long life and low leakage.
- Industry common cavity.
- Optional bias springs for backpressure application flexibility.

**HYDRAULIC SYMBOL**



**PERFORMANCE**

Actual Test Data (Cartridge Only)

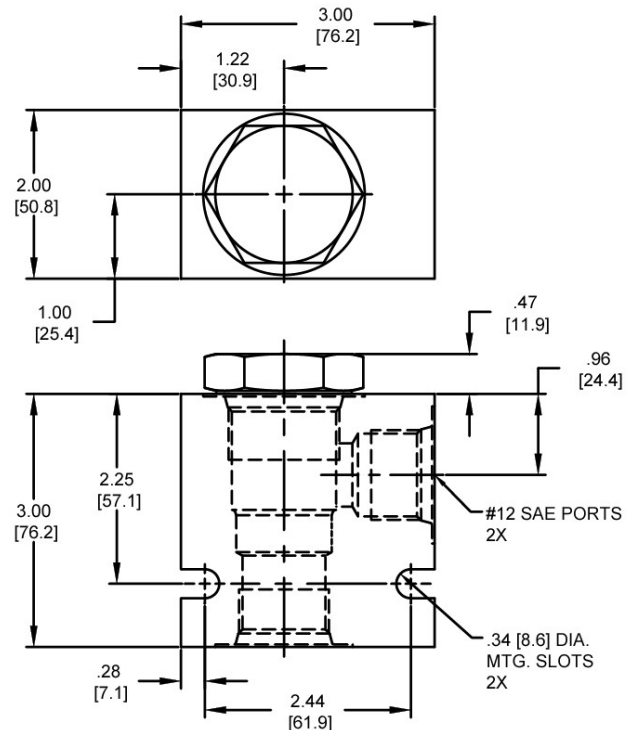
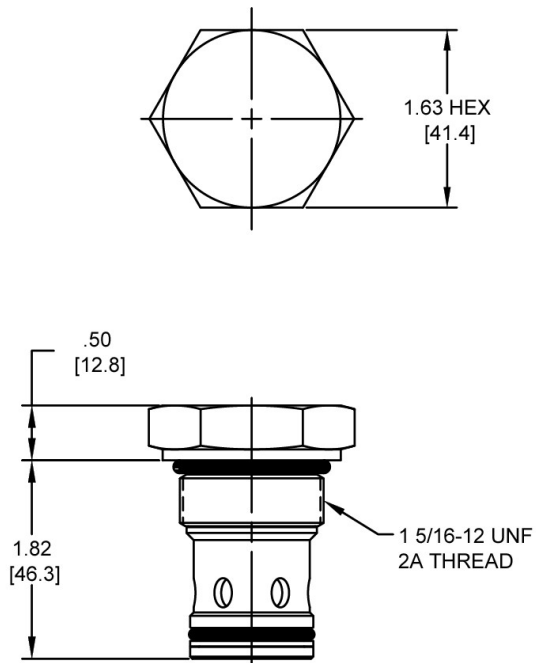


**VALVE SPECIFICATIONS**

Nominal Flow	40 GPM (151 LPM)
Rated Operating Pressure	3500 PSI (241 bar)
Typical Internal Leakage (150 SSU)	0-5 drops/min
Viscosity Range	36 to 3000 SSU (3 to 647 cSt)
Filtration	ISO 18/16/13
Media Operating Temp. Range	-40° to 250°F (-40° to 120°C)
Weight	.67 lbs (.30 kg)
Operating Fluid Media	General Purpose Hydraulic Fluid
Cartridge Torque Requirements	90 ft-lbs (122 Nm)
Cavity	SUPER 2W
Cavity Form Tool (Finishing)	40500017
Seal Kit	21191400

**WARNING:** the specifications/application data shown in our catalogs and data sheets are intended only as a general guide for the product described (herein). Any specific application should not be undertaken without independent study, evaluation, and testing for suitability.

## DIMENSIONS



**Body Weight:** 1.29 lbs (.58 kg)

## ORDERING INFORMATION

**SJ-CVA –**

**OPTIONS**

Buna Standard	<b>00</b>
Viton Standard	<b>V0</b>

## BODIES

<b>Blank</b>	Without Body
<b>N</b>	3/4" NPTF Ports
<b>S</b>	#12 SAE Ports

**CRACK RESSURE**

<b>0005</b>	5 PSI
<b>0010</b>	10 PSI
<b>0030</b>	30 PSI
<b>0050</b>	50 PSI
<b>0065</b>	65 PSI
<b>0135</b>	135 PSI
	± 10%