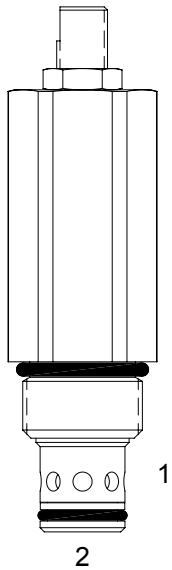


DE-FCC ADJUSTABLE FLOW CONTROL VALVE, PRESSURE COMPENSATED



DESCRIPTION

10 size, 7/8-14 thread, "Delta" series, pressure compensated, flow control valve.

OPERATION

The DE-FCC maintains a constant flow rate out of (1) regardless of load pressure changes in the circuit downstream of (1). The adjustable control orifice can be set to customer flow specification (see options for ranges). The valve begins to respond to load changes when the flow through the valve creates a pressure differential across the control orifice. Consult chart to see regulation at high and low adjustment settings. Reverse flow (1) to (2) returns through the control orifice and is non-compensated. The regulated flow increases from low to high with clockwise rotation of the knob.

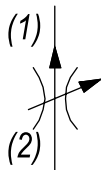
FEATURES

- Hardened parts for long life.
- Industry common cavity.
- Fine low-torque adjustment.



Lowest pressure drop is obtained with adjustment at lowest setting.

HYDRAULIC SYMBOL

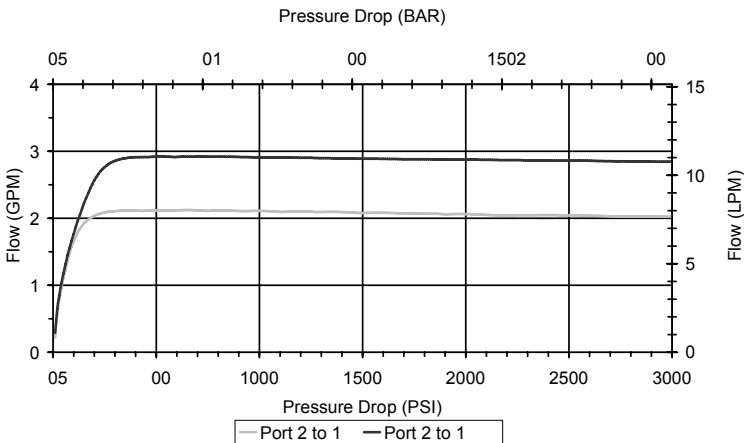
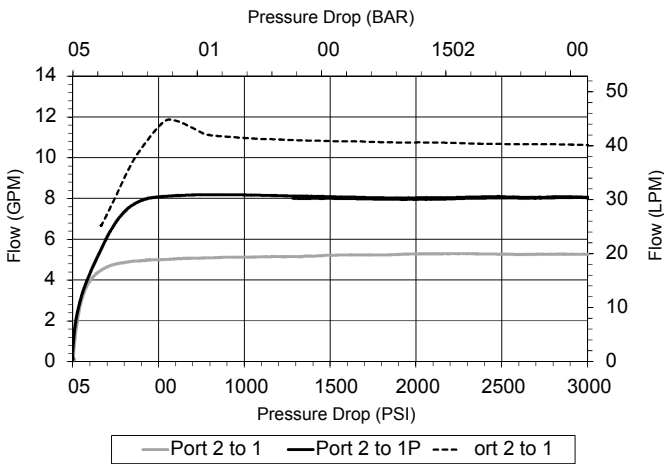


PERFORMANCE

Actual Test Data (Cartridge Only)

VALVE SPECIFICATIONS

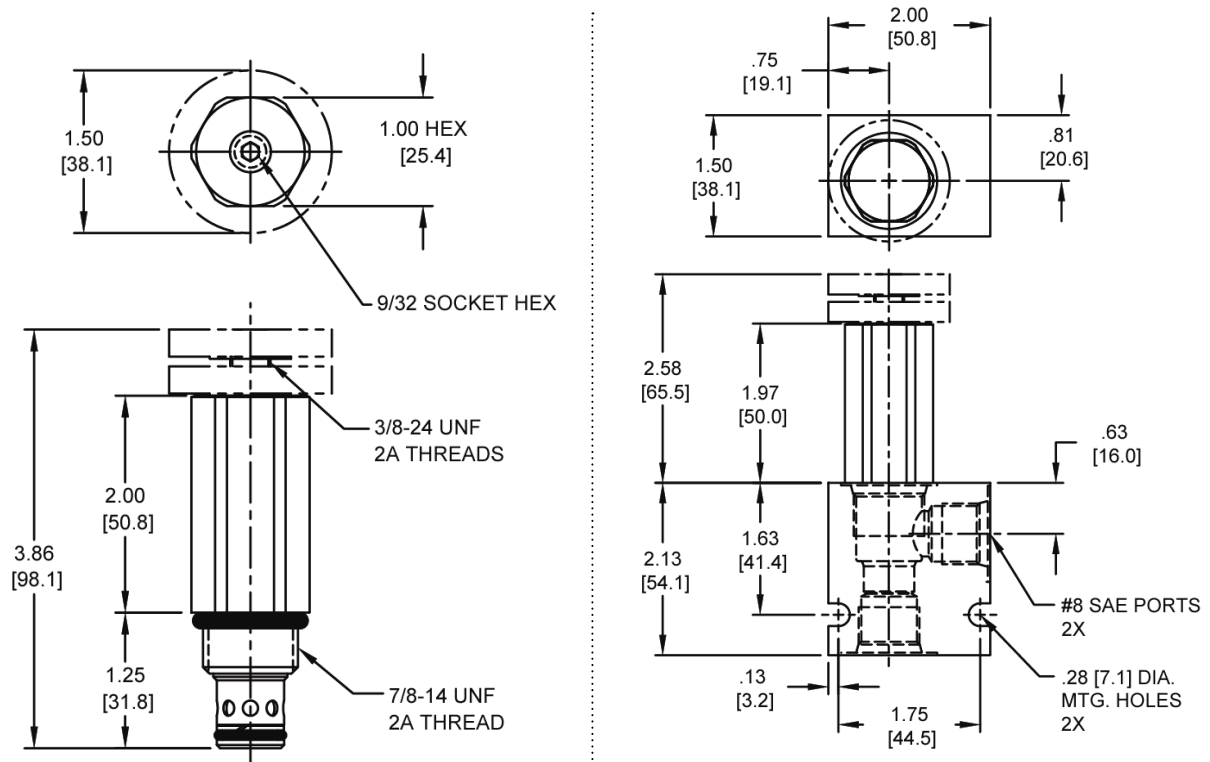
Max Regulated Flow	11 GPM (41.5 LPM)
Rated Operating Pressure	3500 PSI (241 bar)
Viscosity Range	36 to 3000 SSU (3 to 647 cSt)
Filtration	ISO 18/16/13
Media Operating Temp. Range	-40° to 250°F (-40° to 120°C)
Weight	.51 lbs (.23 kg)
Operating Fluid Media	General Purpose Hydraulic Fluid
Cartridge Torque Requirements	30 ft-lbs (40.6 Nm)
Cavity	DELTA 2W
Cavity Form Tool (Finishing)	40500000
Seal Kit	21191200



WARNING: the specifications/application data shown in our catalogs and data sheets are intended only as a general guide for the product described (herein). Any specific application should not be undertaken without independent study, evaluation, and testing for suitability.

11/50/2022

DIMENSIONS



Body Weight: .47 lbs (.21 kg)

ORDERING INFORMATION

DE-FCC - - -			
OPTIONS		BODIES	
Buna Standard	00	Blank	Without Body
Viton Standard	V0	N	3/8" NPTF Ports
Buna, Knob	OK	S	#8 SAE Ports
Viton, Knob	VK		
		FLOW	
1.16	0.80-1.16 GPM		
1.62	1.16-1.62 GPM		
2.09	1.62-2.09 GPM		
2.90	2.09-2.90 GPM		
3.80	2.90-3.80 GPM		
5.00	3.80-5.00 GPM		
8.00	5.00-8.00 GPM		
11.0	8.00-11.0 GPM		

FLOW

Fill In 4 Digit Flow Setting
Example: 4.00 – 4 GPM