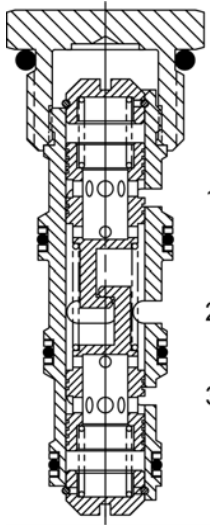


**DG-FDH FLOW DIVIDER / COMBINER VALVE, SPOOL TYPE****DESCRIPTION**

"High Accuracy" 10 size, 7/8-14 thread "Delta Series", spool type, flow divider/combiner.

**OPERATION**

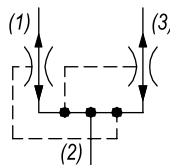
In the dividing mode, the DG-FDH will divert input flow from port (2) to ports (3) and (1), based on the ratio specified with a high degree of accuracy, regardless of operating pressure. The DG-FDH will combine input flows from ports (3) and (1), to port (2) by the same ratio. Should circuit operation result in a blockage of either (3) or (1), the opposite port may also close under certain conditions. Should this potential exist, consult the factory.

**FEATURES**

- Hardened parts for long life.
- Industry common cavity.



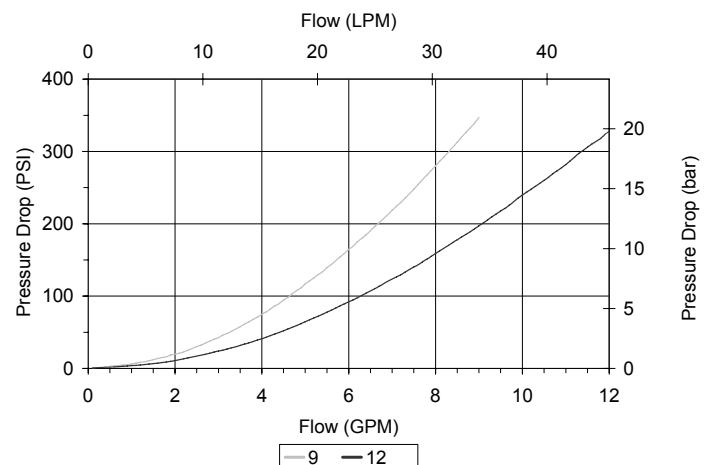
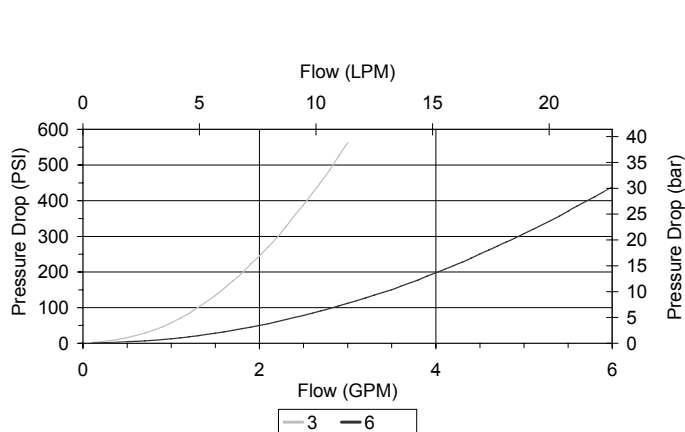
**DO NOT EXCEED MAXIMUM FLOW PER MODEL.**  
The DG-FDH should be considered if the DG-FDA does not provide the required accuracy.

**HYDRAULIC SYMBOL****PERFORMANCE**

Actual Test Data (Cartridge Only)

**VALVE SPECIFICATIONS**

Maximum Flow	12 GPM (45 LPM)
Accuracy on Flow Splits	±4% of Max Rated Inlet Flow
Maximum Operating Pressure	3500 PSI (241 bar)
Viscosity Range	36 to 3000 SSU (3 to 647 cSt)
Filtration	ISO 18/16/13
Media Operating Temp. Range	-40° to 250°F (-40° to 120°C)
Weight	.21 lbs (.10 kg)
Operating Fluid Media	General Purpose Hydraulic Fluid
Cartridge Torque Requirements	30 ft-lbs (40.6 Nm)
Cavity	DELTA 4W
Cavity Form Tool (Finishing)	40500002
Seal Kit	21191214



**WARNING:** the specifications/application data shown in our catalogs and data sheets are intended only as a general guide for the product described (herein). Any specific application should not be undertaken without independent study, evaluation, and testing for suitability.

Via Malavolti, 36 - 41122 Modena - ITALY - Phone +39 (059) 254895 - Fax +39 (059) 253512 - mail: [tecnord@tecnord.com](mailto:tecnord@tecnord.com) - [www.tecnord.com](http://www.tecnord.com)

