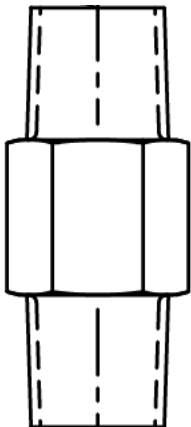
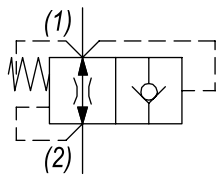


**IM-CVF** INLINE VELOCITY FUSE**DESCRIPTION**

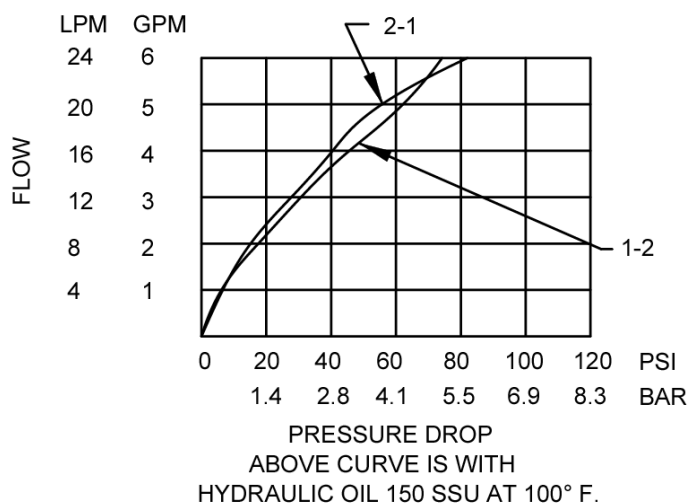
3/8 NPTF thread, inline velocity fuse.

**OPERATION**

The IM-CVF allows flow to pass between (1) and (2). When oil velocity from (1) to (2) exceeds the flow setting, the valve shifts and blocks flow from (1) to (2).

**HYDRAULIC SYMBOL****PERFORMANCE**

Actual Test Data (Cartridge Only)

**VALVE SPECIFICATIONS - IM-CVF 11**

Nominal Flow Max	6 GPM (23 LPM)
Rated Operating Pressure	3500 PSI (241 bar)
Typical Internal Leakage (150 SSU)	0-5 drops/min
Viscosity Range	36 to 3000 SSU (3 to 647 cSt)
Filtration	ISO 18/16/13
Media Operating Temp. Range	-40° to 250°F (-40° to 120°C)
Weight	.18 lbs (.08 kg)
Operating Fluid Media	General Purpose Hydraulic Fluid

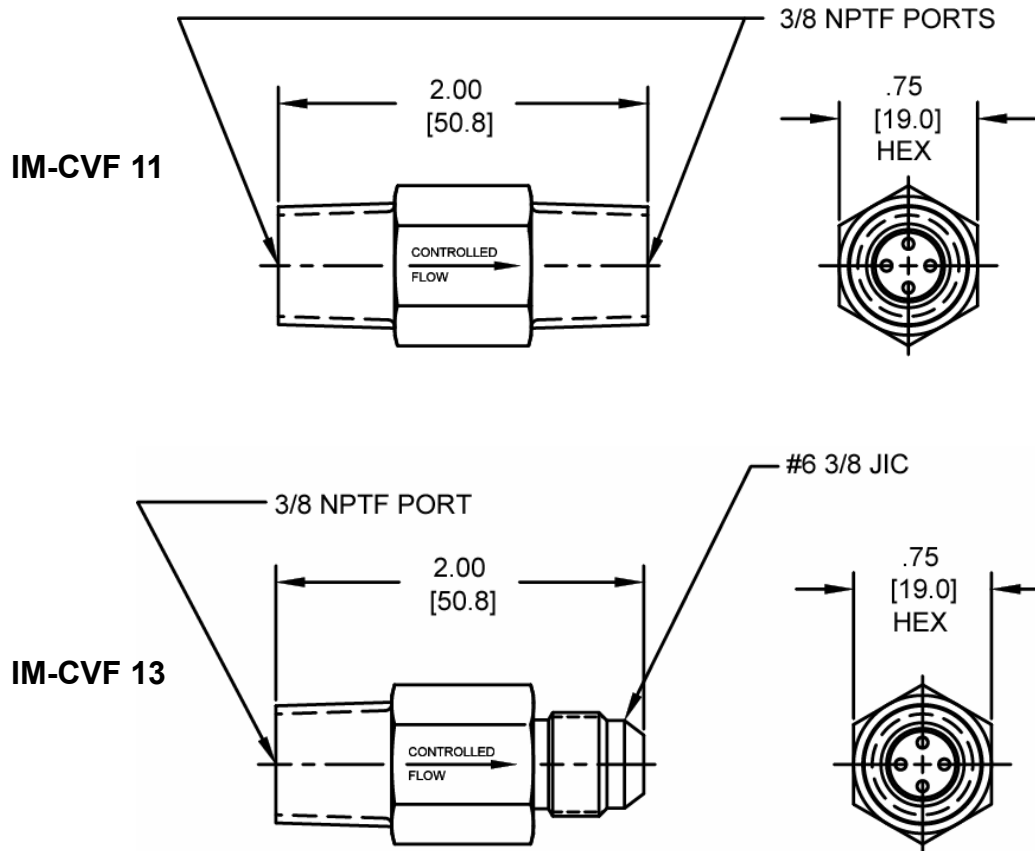
**VALVE SPECIFICATIONS - IM-CVF 13**

Nominal Flow Max	6 GPM (23 LPM)
Rated Operating Pressure	3000 PSI (207 bar)
Typical Internal Leakage (150 SSU)	0-5 drops/min
Viscosity Range	36 to 3000 SSU (3 to 647 cSt)
Filtration	ISO 18/16/13
Media Operating Temp. Range	-40° to 250°F (-40° to 120°C)
Weight	.16 lbs (.07 kg)
Operating Fluid Media	General Purpose Hydraulic Fluid

**WARNING:** the specifications/application data shown in our catalogs and data sheets are intended only as a general guide for the product described (herein). Any specific application should not be undertaken without independent study, evaluation, and testing for suitability.

Via Malavolti, 36 - 41122 Modena - ITALY - Phone +39 (059) 254895 - Fax +39 (059) 253512 - mail: [tecnord@tecnord.com](mailto:tecnord@tecnord.com) - [www.tecnord.com](http://www.tecnord.com)

DIMENSIONS



ORDERING INFORMATION

DE-CVF	-	-	-
	11		
	13		
		01.0	1 PSI
		02.0	2 PSI
		03.0	3 PSI
		04.0	4 PSI
		05.0	5 PSI
		06.0	6 PSI

FLOW SETTINGS

01.0 1 PSI  
 02.0 2 PSI  
 03.0 3 PSI  
 04.0 4 PSI  
 05.0 5 PSI  
 06.0 6 PSI