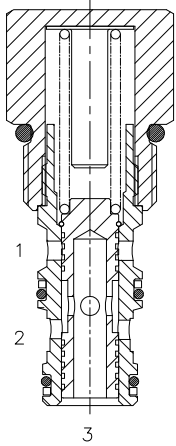


DF-CP2 PRESSURE COMPENSATING/REDUCING VALVE



DESCRIPTION

10 size, 7/8-14 thread, "Delta" series, 2 ways pressure compensating/reducing valve.

OPERATION

The DF-CP2 allows pressure compensated flow from (2) to (3) regulated by the pressure present at (1). Pressure differential between (3) and (1) is fixed at 8/14/18 bar (according to the pressure settings). These are minimum values, increasing with the flow because of the pressure drop through the valve (see graph). When used with (1) connected to a drain line, it works as pressure reducing valve.

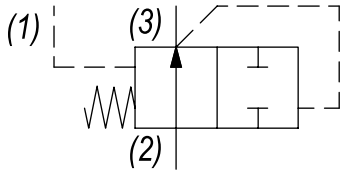
FEATURES

- Hardened parts for long life.
- Industry common cavity.
- Spring range 8 to 18 bar.



Pressure compensator for 2 way flow control, typically used with an external orifice inline with port (3). Port (1) should sense upstream pressure of orifice.

HYDRAULIC SYMBOL



PERFORMANCE

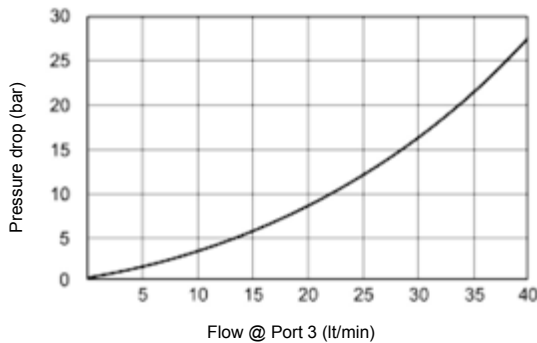
Actual Test Data (Cartridge Only)

VALVE SPECIFICATIONS

Nominal Flow	8 GPM (30 LPM)
Rated Operating Pressure	3500 PSI (241 bar)
Typical Internal Leakage (150 SSU)	35 ml/min @ 250 bar
Viscosity Range	36 to 3000 SSU (3 to 647 cSt)
Filtration	ISO 18/16/13
Media Operating Temp. Range	-25° to +95°C
Weight	.35 lbs (.16 kg)
Operating Fluid Media	General Purpose Hydraulic Fluid
Cartridge Torque Requirements	33 ft-lbs (45 Nm)
Cavity	DELTA 3W
Cavity Tools Kit (form tool, reamer, tap)	40500001
Seal Kit	210902025

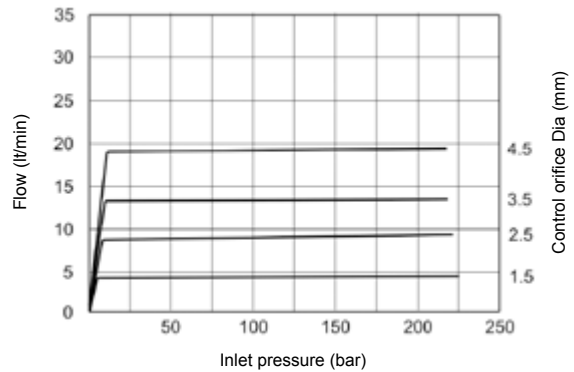
Pressure Drop (bar) vs. Flow (lt/min)

For various pressure compensator settings (bar)



DF-CP2 008 - Flow (lt/min) vs. inlet pressure (bar)

For various orifice diameters (mm)

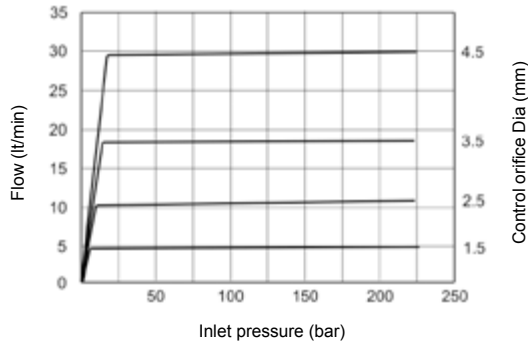


WARNING: the specifications/application data shown in our catalogs and data sheets are intended only as a general guide for the product described (herein). Any specific application should not be undertaken without independent study, evaluation, and testing for suitability.

DIMENSIONS

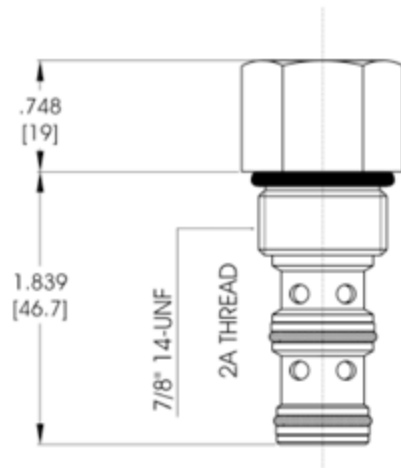
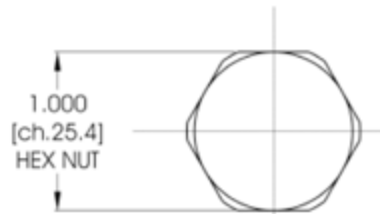
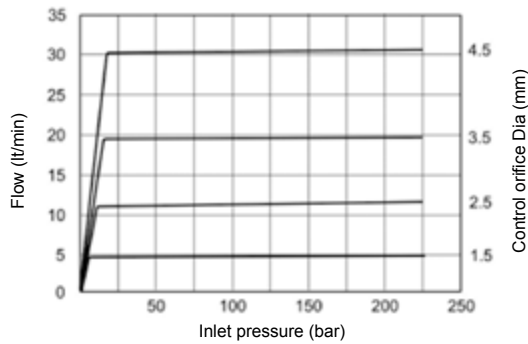
DF-CP2 014 - Flow (lt/min) vs. inlet pressure (bar)

For various orifice diameters (mm)



DF-CP2 018 - Flow (lt/min) vs. inlet pressure (bar)

For various orifice diameters (mm)



(for bodies style and sizes see section "Accessories")

ORDERING INFORMATION

<p>DF-CP2 -</p> <p style="text-align: center;">OPTIONS</p> <p>Buna Standard 00</p> <p>Viton Standard V0</p>	<p>-</p> <p style="text-align: center;">PRESSURE SETTINGS</p> <p>008 8 bar (115 PSI)</p> <p>014 14 bar (200 PSI)</p> <p>018 18 bar (260 PSI)</p>	<p style="text-align: center;">-</p> <p style="text-align: center;">BODIES</p> <p>Blank Without Body</p> <p>N 3/8" BSP Ports</p> <p>S #6 SAE Ports</p>
---	--	--

Differential Pressure Across External Controlling Orifice

WARNING: the specifications/application data shown in our catalogs and data sheets are intended only as a general guide for the product described (herein). Any specific application should not be undertaken without independent study, evaluation, and testing for suitability.