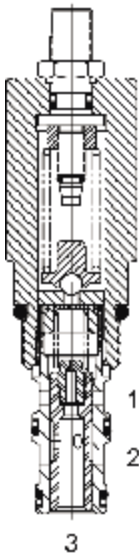


DF-PWP PILOT OPERATED PRESSURE REDUCING, RELIEVING VALVE



DESCRIPTION

10 size, 7/8-14 thread, "Delta" series, pilot operated pressure reducing, relieving valve.

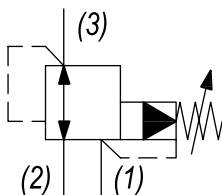
OPERATION

The DF-PWP in its steady state, allows flow to pass from (2) to (3), with the spring chamber constantly drained at (1). When a pre-determined pressure is reached at (3), the spool shifts to restrict input flow at (2), thereby reducing (restricting) flow. If valve and pressure at port (3) exceeds setting, spool shifts to open passage at port (1), thereby regulating pressure at port (3) by relieving excess flow. The cartridge offers smooth transition in response to load changes in common hydraulic circuits.

FEATURES

- Hardened parts for long life.
- Industry common cavity.

HYDRAULIC SYMBOL

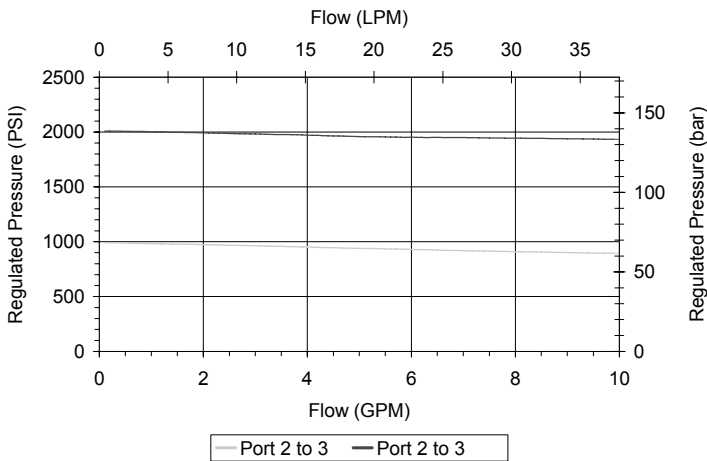
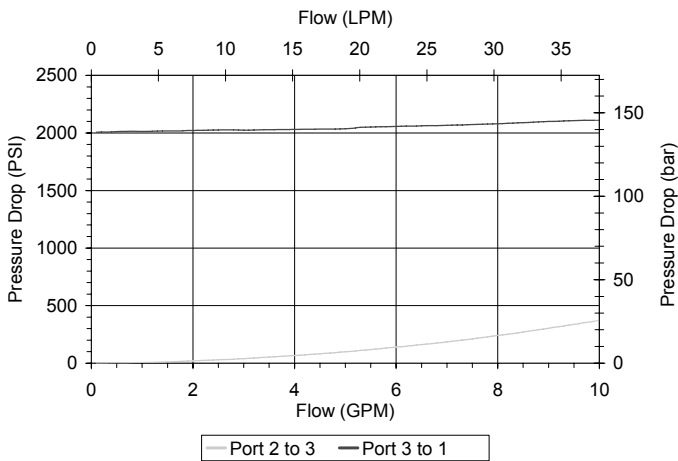


PERFORMANCE

Actual Test Data (Cartridge Only)

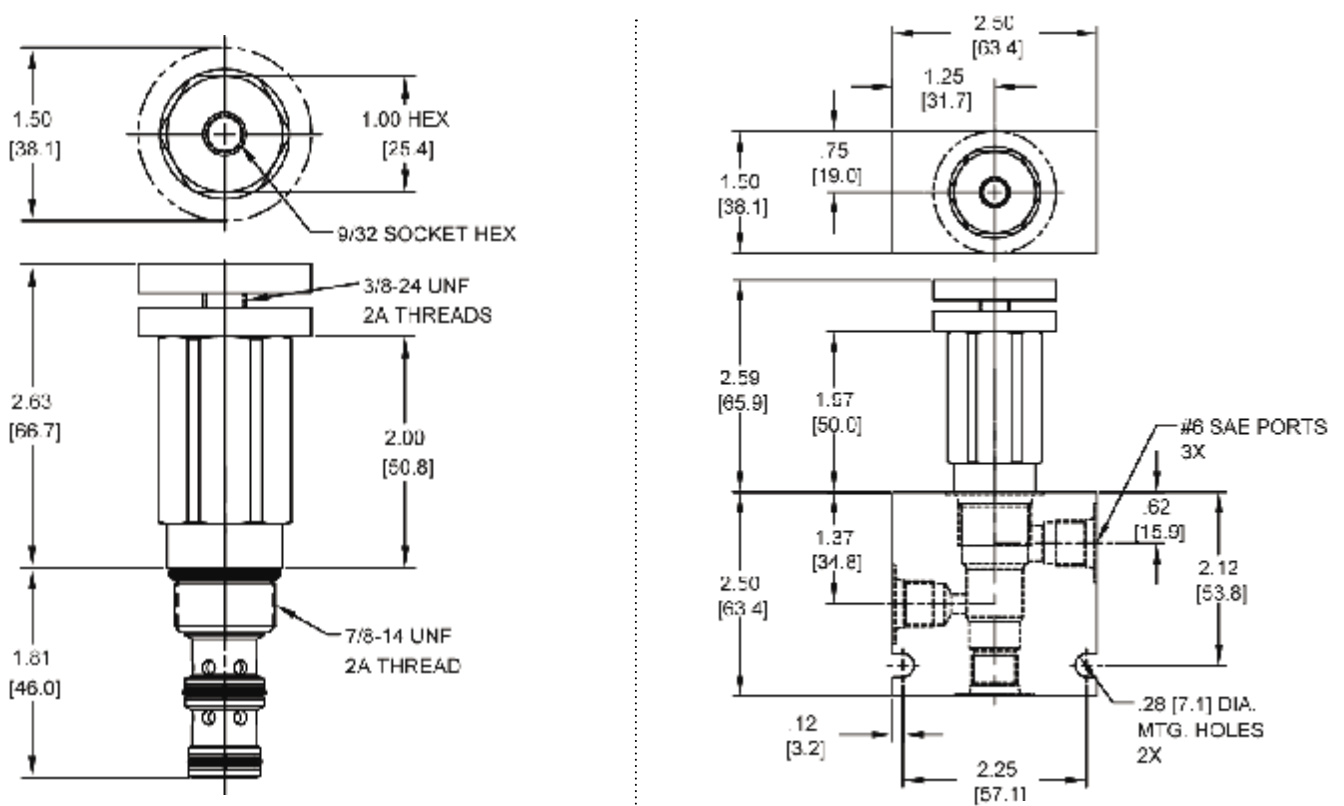
VALVE SPECIFICATIONS

Nominal Flow	10 GPM (38 LPM)
Rated Operating Pressure	4000 PSI (276 bar)
Viscosity Range	36 to 3000 SSU (3 to 647 cSt)
Filtration	ISO 18/16/13
Media Operating Temp. Range	-40° to 250°F (-40° to 120°C)
Weight	.57 lbs (.26 kg)
Operating Fluid Media	General Purpose Hydraulic Fluid
Cartridge Torque Requirements	30 ft-lbs (40.6 Nm)
Cavity	DELTA 3W
Cavity Form Tool (Finishing)	40500001
Seal Kit	21191206



WARNING: the specifications/application data shown in our catalogs and data sheets are intended only as a general guide for the product described (herein). Any specific application should not be undertaken without independent study, evaluation, and testing for suitability.

DIMENSIONS



Body Weight: .76 lbs (.35 kg)

ORDERING INFORMATION

DF-PWP	-	-	-
<u>OPTIONS</u>			<u>BODIES</u>
Buna Standard 00			Blank Without Body
Viton Standard V0			N 1/4" NPTF Ports
Buna, Knob 0K			S #6 SAE Ports
Viton, Knob VK			
Buna, Internal Adjust 0I			
Viton, Internal Adjust VI			
Buna, Tamper Proof 0T			
Viton, Tamper Proof VT			
		4000	
		<u>PRESSURE RANGE/SETTING</u>	
		Ext./Int. Adjustable	
		100 - 4000 PSI	
		Tamper Proof	
		Fill in 4 Digit Pressure Setting	
		Example: 0500 - 500 PSI	

WARNING: the specifications/application data shown in our catalogs and data sheets are intended only as a general guide for the product described (herein). Any specific application should not be undertaken without independent study, evaluation, and testing for suitability.