

DG-PSI SEQUENCE VALVE, 3 WAY NORMALLY OPEN, INTERNAL PILOT



DESCRIPTION

10 size, 7/8-14 thread, "Delta" series, 3 way normally open internal pilot sequence valve.

OPERATION

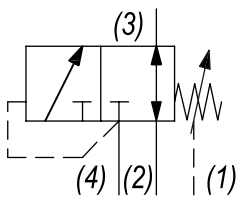
The DG-PSI in neutral (un-piloted), allows flow between (3) and (2) bidirectional, while blocking at (4). The spring chamber is constantly vented at (1). On attainment of a predetermined pressure at (4), the cartridge shifts to close (3) to (2), while opening (4) to (3).

Note: that the backpressure value at (1) must be added to the selected pressure setting to determine pilot pressure necessary to open valve.

FEATURES

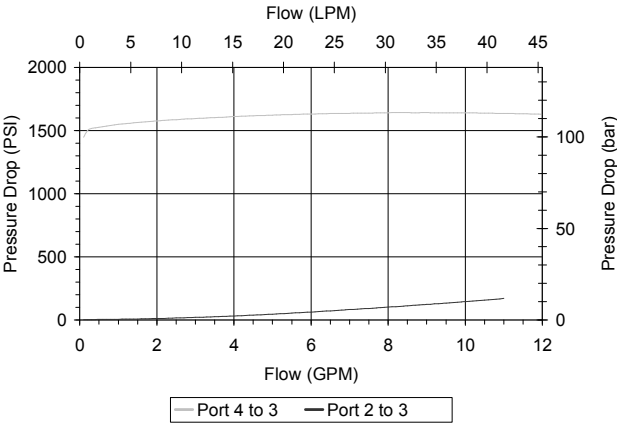
- Optional spring ranges to 1500 PSI (103 bar).
- Hardened parts for long life.
- Industry common cavity.

HYDRAULIC SYMBOL



PERFORMANCE

Actual Test Data (Cartridge Only)



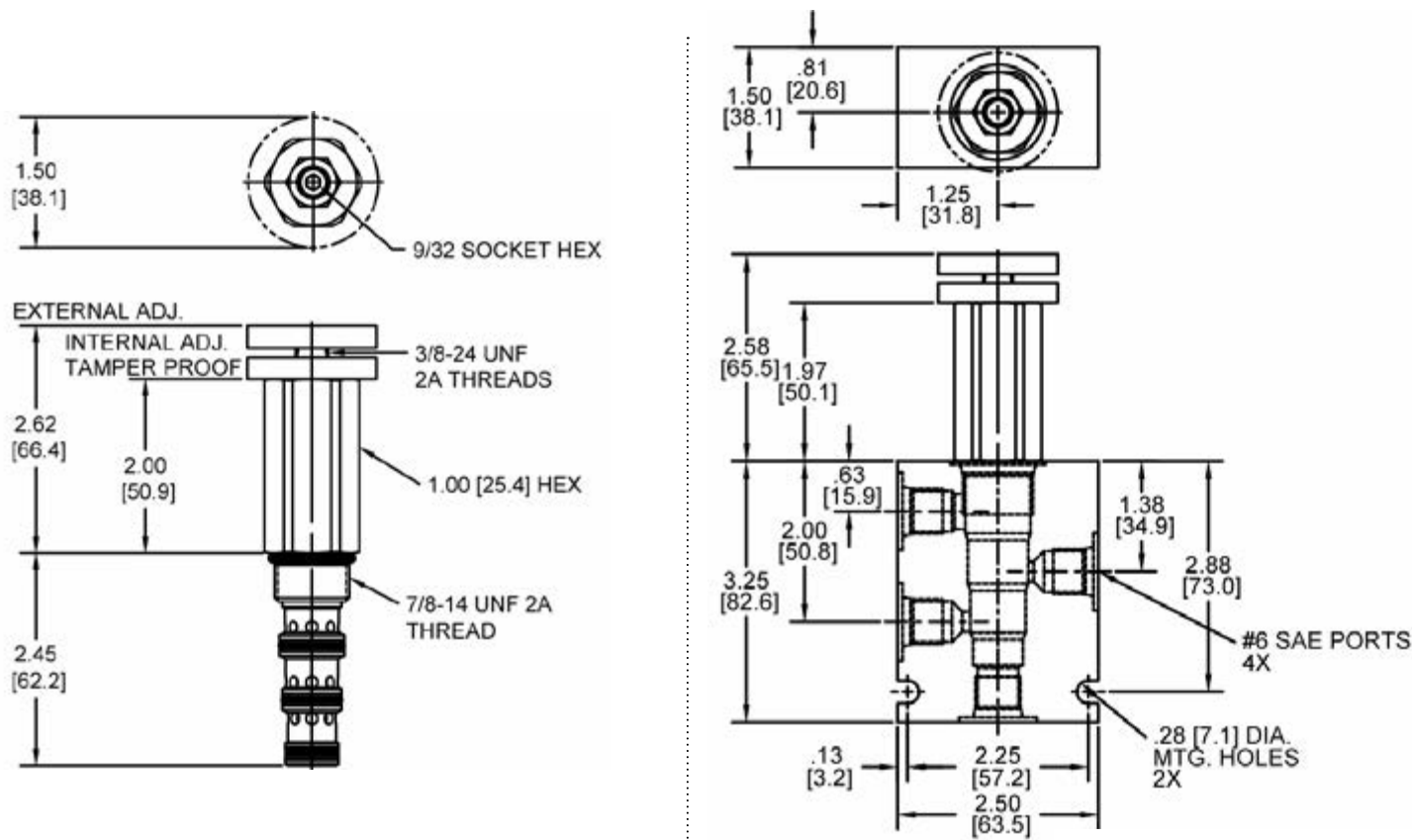
VALVE SPECIFICATIONS

Nominal Flow	10 GPM (38 LTR/M)
Rated Operating Pressure	3000 PSI (207 bar)
Typical Internal Leakage (150 SSU)	5 cu in/min (82 ml/min)
Viscosity Range	36 to 3000 SSU (3 to 647 cSt)
Filtration	ISO 18/16/13
Media Operating Temp. Range	-40° to 250°F (-40° to 120°C)
Weight	.63 lbs (.28 kg)
Operating Fluid Media	General Purpose Hydraulic Fluid
Cartridge Torque Requirements	30 ft-lbs (40.6 Nm)
Cavity	DELTA 4W
Cavity Form Tool (Finishing)	40500002
Seal Kit	21191214

**WARNING:** the specifications/application data shown in our catalogs and data sheets are intended only as a general guide for the product described (herein). Any specific application should not be undertaken without independent study, evaluation, and testing for suitability.

W/ 50/2022

DIMENSIONS



Body Weight: .99 lbs (.45 kg)

ORDERING INFORMATION

DG-PSI	-	-	-	-
<u>OPTIONS</u>			<u>BODIES</u>	
Buna Standard	00		Blank	Without Body
Viton Standard	V0		N	1/4" NPTF Ports
Buna, Knob	0K		S	#6 SAE Ports
Viton, Knob	VK			
Buna, Internal Adjust	0I			
Viton, Internal Adjust	VI			
Buna, Tamper Proof	0T			
Viton, Tamper Proof	VT			
			<u>PRESSURE RANGE</u>	
	0425	50 - 425 PSI		
	1500	425 - 1500 PSI		

**Tamper Proof**  
Fill in 4 Digit Pressure Setting  
Example: 0500 - 500 PSI