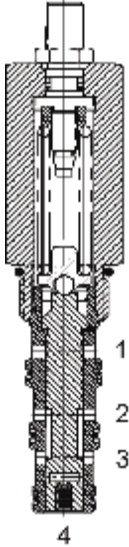


**DG-PSO SEQUENCE VALVE, 2 WAY NORMALLY OPEN, EXTERNAL PILOT****DESCRIPTION**

10 size, 7/8-14 thread, "Delta" series, 2 way normally open sequence valve, external pilot.

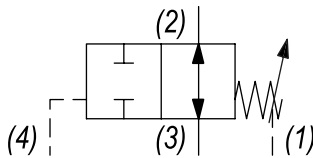
**OPERATION**

The DG-PSO in neutral (un-piloted), allows flow between (3) and (2) bi-directionally. The spring chamber is constantly vented at (1). On attainment of a predetermined pressure at (4), the cartridge shifts to block flow from (3) to (2).

Note: that the backpressure value at (1) must be added to the selected pressure setting to determine pilot pressure necessary to close valve.

**FEATURES**

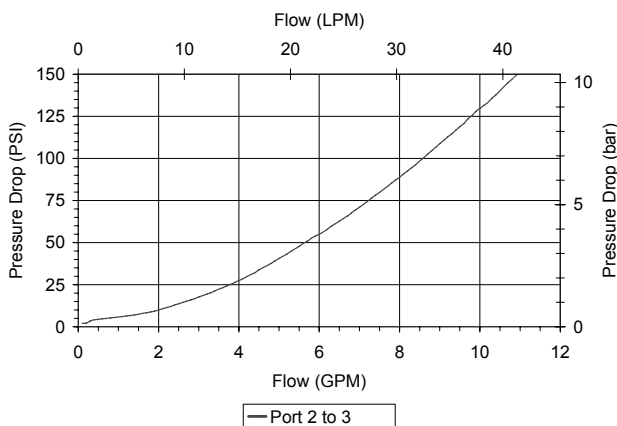
- Optional spring ranges to 1500 PSI (103 bar).
- Hardened parts for long life.
- Industry common cavity.

**HYDRAULIC SYMBOL**

Orifice .030 to .060 diameter recommended beneath port (4).

**PERFORMANCE**

Actual Test Data (Cartridge Only)

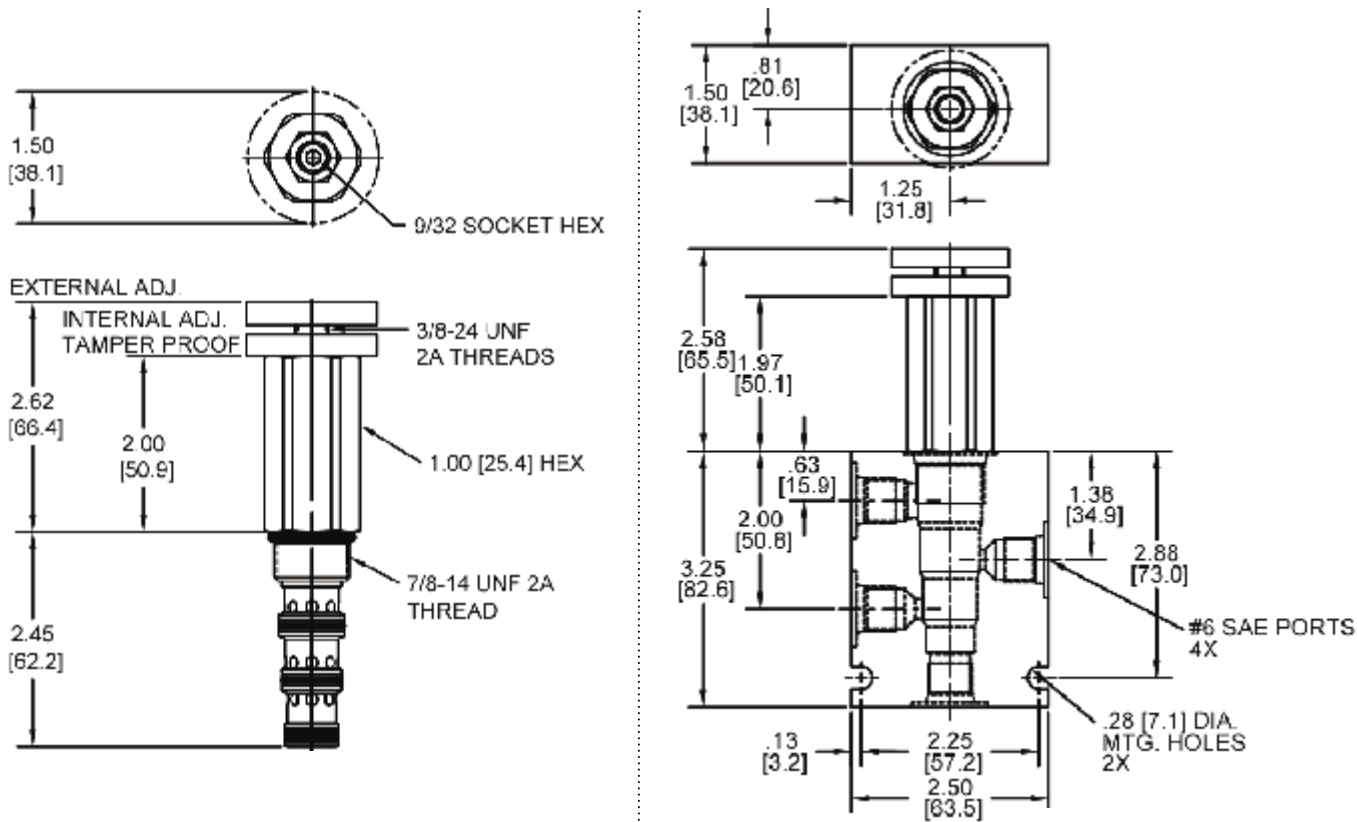
**VALVE SPECIFICATIONS**

Nominal Flow	10 GPM (38 LTR/M)
Rated Operating Pressure	3000 PSI (207 bar)
Typical Internal Leakage (150 SSU)	5 cu in/min (82 ml/min)
Viscosity Range	36 to 3000 SSU (3 to 647 cSt)
Filtration	ISO 18/16/13
Media Operating Temp. Range	-40° to 250°F (-40° to 120°C)
Weight	.62 lbs (.28 kg)
Operating Fluid Media	General Purpose Hydraulic Fluid
Cartridge Torque Requirements	30 ft-lbs (40.6 Nm)
Cavity	DELTA 4W
Cavity Form Tool (Finishing)	40500002
Seal Kit	21191214

**WARNING:** the specifications/application data shown in our catalogs and data sheets are intended only as a general guide for the product described (herein). Any specific application should not be undertaken without independent study, evaluation, and testing for suitability.

Via Malavolti, 36 - 41122 Modena - ITALY - Phone +39 (059) 254895 - Fax +39 (059) 253512 - mail: [tecnord@tecnord.com](mailto:tecnord@tecnord.com) - [www.tecnord.com](http://www.tecnord.com)

DIMENSIONS



Body Weight: .99 lbs (.45 kg)

ORDERING INFORMATION

DG-PSO	-	-	-	-	-
<b>OPTIONS</b>		<b>BODIES</b>		<b>PRESSURE RANGE</b>	
Buna Standard	00	Blank	Without Body	0425	50 - 425 PSI
Viton Standard	V0	N	1/4" NPTF Ports	1500	425 - 1500 PSI
Buna, Knob	0K	S	#6 SAE Ports		
Viton, Knob	VK				
Buna, Internal Adjust	0I				
Viton, Internal Adjust	VI				
Buna, Tamper Proof	0T				
Viton, Tamper Proof	VT				

**Tamper Proof**  
Fill in 4 Digit Pressure Setting  
Example: 0500 - 500 PSI