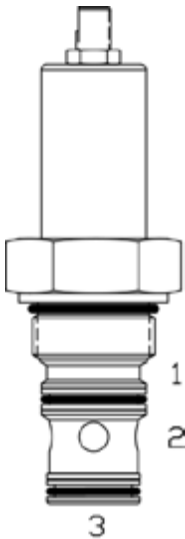


SL-PWB SEQUENCE VALVE, NORMALLY CLOSED, INTERNAL PILOT WITH REVERSE FREE FLOW

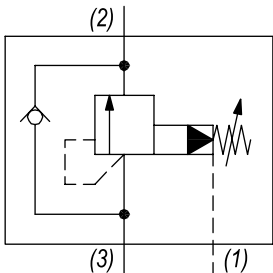


DESCRIPTION
16 size, 1 5/16-12 thread, "Super" series, internal pilot normally closed, sequence valve w/ reverse free flow.

OPERATION
The SL-PWB blocks flow from ports (3) to (2). On attainment of a predetermined pressure at (3) the valve shifts to allow flow from (3) to (2). Port (1) should be a tank line. Reverse flow from (2) to (3) occurs when the pressure at port (2) is at least 45 PSI (3.1 bar) higher than at port (3).

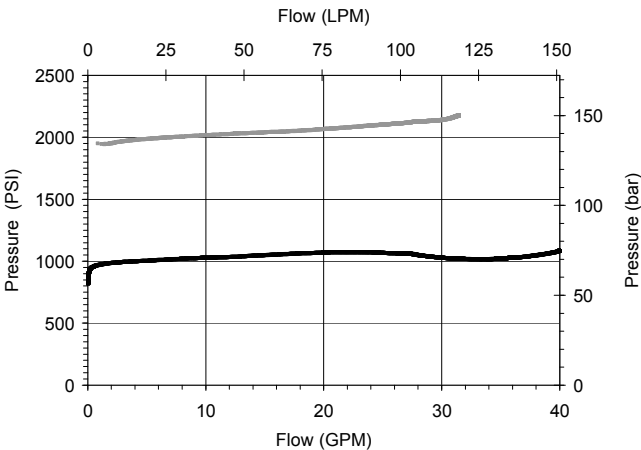
- FEATURES**
- Hardened parts for long life.
 - Industry common cavity.

HYDRAULIC SYMBOL



PERFORMANCE

Actual Test Data (Cartridge Only)

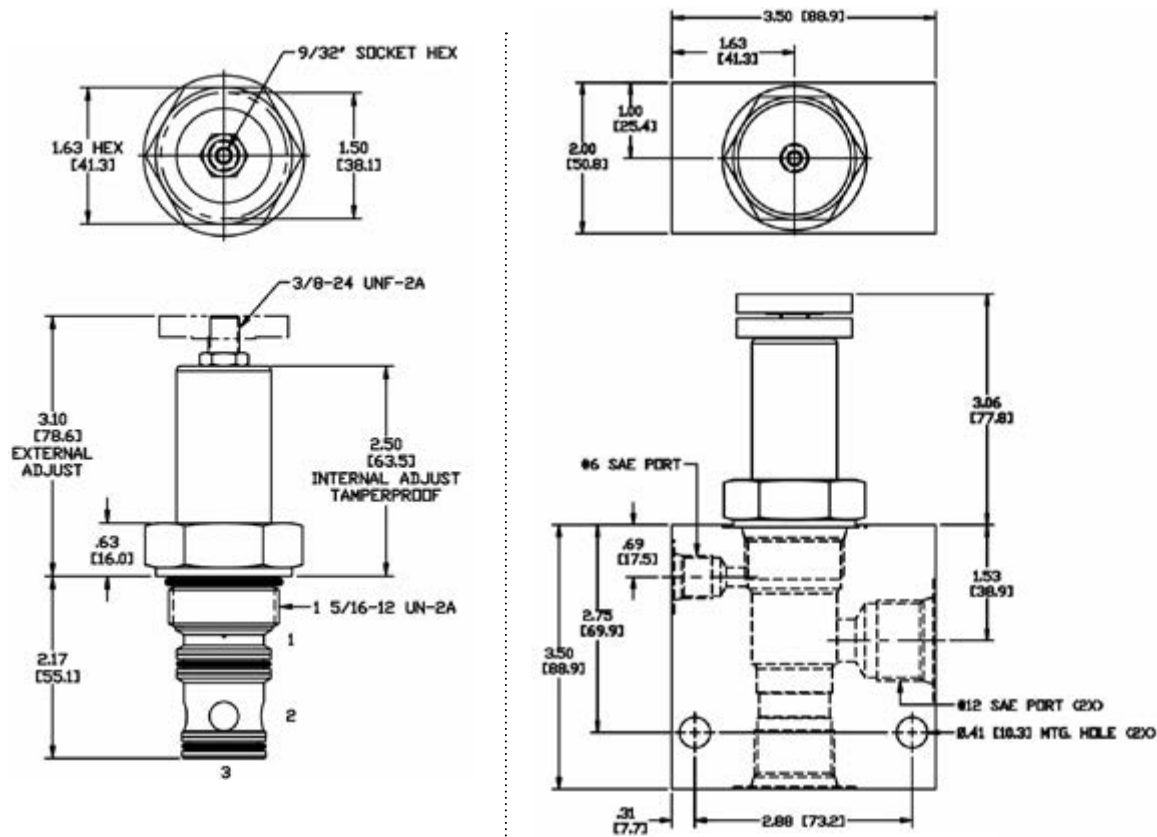


VALVE SPECIFICATIONS

Nominal Flow	40 GPM (151 LPM)
Rated Operating Pressure	3500 PSI (241 bar)
Viscosity Range	36 to 3000 SSU (3 to 647 cSt)
Filtration	ISO 18/16/13
Media Operating Temp. Range	-40° to 250°F (-40° to 120°C)
Weight	1.15 lbs (.52 kg)
Operating Fluid Media	General Purpose Hydraulic Fluid
Cartridge Torque Requirements	90 ft-lbs (122 Nm)
Cavity	SUPER 3WS
Cavity Form Tool (Finishing)	40500021
Seal Kit	21191404

WARNING: the specifications/application data shown in our catalogs and data sheets are intended only as a general guide for the product described (herein). Any specific application should not be undertaken without independent study, evaluation, and testing for suitability.

DIMENSIONS



Body Weight: 1.89 lbs (.86 kg)

ORDERING INFORMATION

SL-PWB	-	-	-	-
OPTIONS				BODIES
Buna Standard	00			Blank
Viton Standard	V0			S
Buna, Knob	0K			
Viton, Knob	VK			
Buna, Internal Adjust	0I			
Viton, Internal Adjust	VI			
Buna, Tamper Proof	0T			
Viton, Tamper Proof	VT			
			PRESSURE RANGE/SETTING	
		3000	500-3000 PSI	

Tamper Proof
Fill in 4 Digit Pressure Setting
Example: 2000 = 2000 PSI