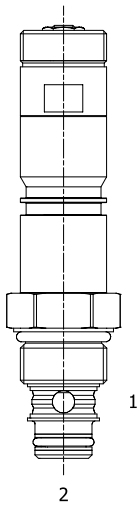


EB-P2A 2 WAY NORMALLY CLOSED, PROPORTIONAL FLOW CONTROL VALVE



DESCRIPTION

8 size, 3/4-16 thread, solenoid operated, 2 way normally closed poppet style, proportional flow control valve.

OPERATION

When de-energized the EB-P2A blocks flow from (1) to (2) and allows reverse flow from (2) to (1). When energized, the valve allows flow from (1) to (2). Flow is proportional to current applied to the coil. A compensator must be used to create a pressure compensated flow control function.

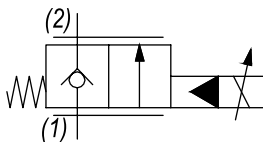
FEATURES

- Efficient wet-armature construction.
- Cartridges are voltage interchangeable.
- Industry common cavity.
- Unitized, molded coil design.
- Continuous duty rated solenoid.
- Optional coil voltages and terminations.



Curves are attained without pressure compensator. The valve can work with a pressure drop up to 200 bar.

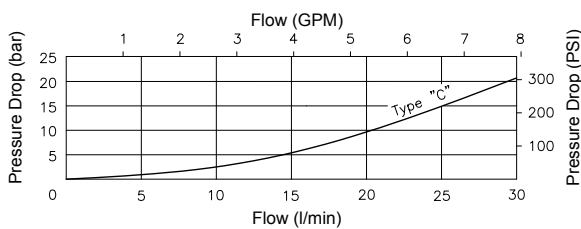
HYDRAULIC SYMBOL



PERFORMANCE

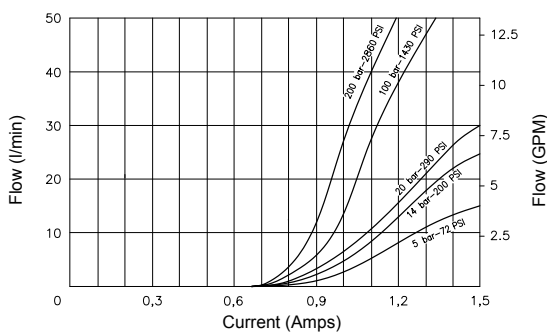
Pressure Drop

1 to 2 with valve completely open



Flow vs. Current at different Pressure Drop

Coil 12 VDC - hyd. - Oil 26 cSt (121 SSU) @ 40°C (104°F)



VALVE SPECIFICATIONS

Flow Range	See curves
Max System Pressure	3500 PSI (241 bar)
Leakage	0-10 drops / min @ 245 bar
Hysteresis	±3%
Viscosity Range	36 to 3000 SSU (3 to 647 cSt)
Filtration	ISO 18/16/13
Media Operating Temp. Range	-30°C / +100°C
Weight	.72 lbs (.32 kg)
Operating Fluid Media	General Purpose Hydraulic Fluid
Cartridge Torque Requirements	19 ft-lbs (25 Nm)
Coil Nut Torque Requirements	2-3 ft-lbs (3-4 Nm)
Cavity	POWER 2W
Cavity Tools Kit (form tool, reamer, tap)	40500005
Seal Kit	21191102

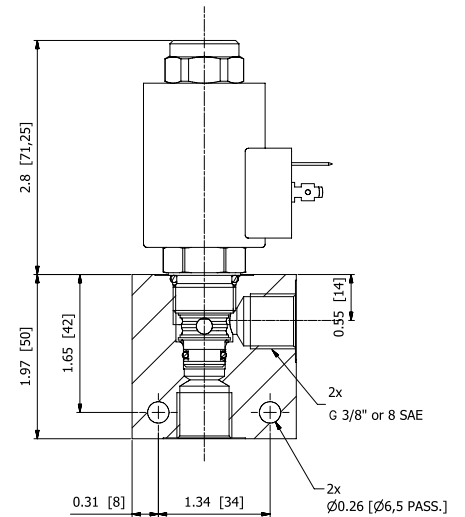
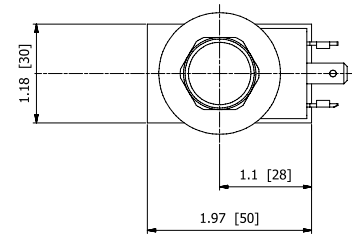
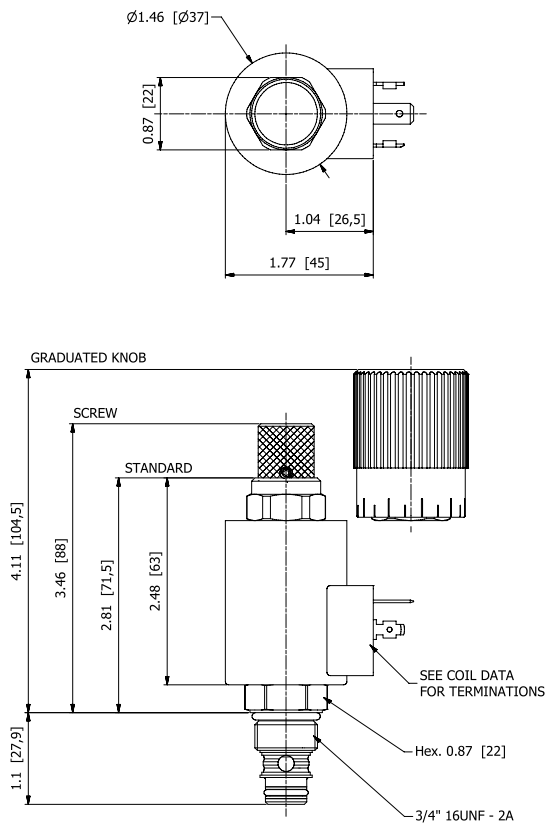
COIL SPECIFICATIONS

Current Supply Characteristics	PWM (Pulse Width Modulation)
Rated Current Range	400-1400 mA
PWM or Super-Imposed	
Dither Frequency	100 Hz
Coil Resistance (12 VDC)	7.2 Ohm ±5% at 68°F (20°C)

WARNING: the specifications/application data shown in our catalogs and data sheets are intended only as a general guide for the product described (herein). Any specific application should not be undertaken without independent study, evaluation, and testing for suitability.

Via Malavolti, 36 - 41122 Modena - ITALY - Phone +39 (059) 254895 - Fax +39 (059) 253512 - mail: tecnord@tecnord.com - www.tecnord.com

DIMENSIONS



(for bodies style and sizes see section "Accessories")

ORDERING INFORMATION

Approximate Coil Weight: .47 lbs (.21 kg)

EB-P2A -

OPTIONS

Buna Standard **C0** Up to 25 l/min
 Buna, Screw Type Override (Knob) **CS** Up to 25 l/min
 Buna, Screw Type Override (Grad. Knob) **CK** Up to 25 l/min

BODIES

Blank Without Body
N 3/8" BSP Ports
S #8 SAE Ports

VOLTAGE

12 12 VDC
24 24 VDC

"F" COIL TERMINATION

HC DIN 43650 (Hirschmann)
DI Deutsch-Integral DT04-2P
JT AMP Jr. Timer

NOTES: 1) Flows refer to a 14 bar Delta P
 2) For other seals, consult factory

WARNING: the specifications/application data shown in our catalogs and data sheets are intended only as a general guide for the product described (herein). Any specific application should not be undertaken without independent study, evaluation, and testing for suitability.

Via Malavolti, 36 - 41122 Modena - ITALY - Phone +39 (059) 254895 - Fax +39 (059) 253512 - mail: tecnord@tecnord.com - www.tecnord.com