

DE-S2F PILOT OPERATED POPPET, 2 WAY NORMALLY CLOSED, SOFT SEAT

DESCRIPTION

10 size, 7/8-14 thread, "Delta" series, solenoid operated, 2 way normally closed, pilot operated soft seat poppet valve with reverse flow de-energized.

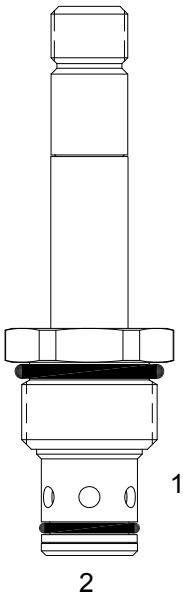
OPERATION

When de-energized the DE-S2F blocks flow from (1) to (2) and allows reverse flow from (2) to (1). When energized the valve allows flow from (1) to (2) but restricts reverse flow from (2) to (1).

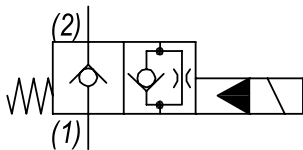
OPERATION OF MANUAL OVERRIDE OPTION: to override, pull knob out. On the detented version, after pulling knob out twist 180 degrees and release. The valve will remain in that position.

FEATURES

- Soft seat for ultra low leakage.
- Efficient wet-armature construction.
- Cartridges are voltage interchangeable.
- Manual override option.
- Industry common cavity.
- Unitized, molded coil design.
- Continuous duty rated solenoid.
- Optional coil voltages and terminations.
- Optional "I" Coil: Weatherproof, Thermal Shock, Immersion Safe.



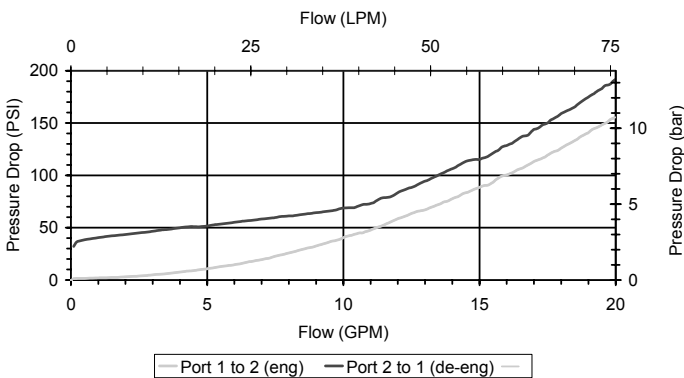
HYDRAULIC SYMBOL



Operational shift limit 10 GPM (38 LPM).
For shifted flow performance consult chart.

PERFORMANCE

Actual Test Data (Cartridge Only)

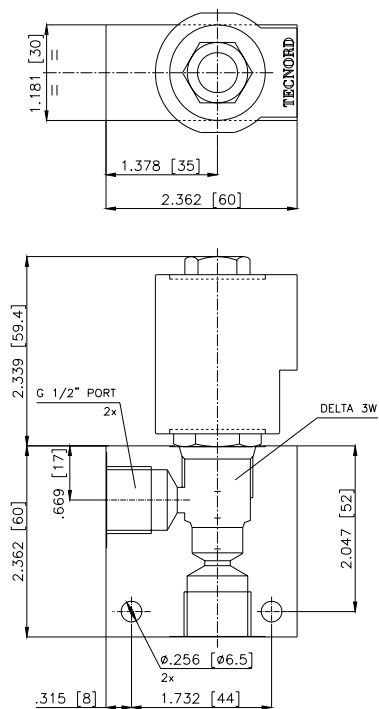
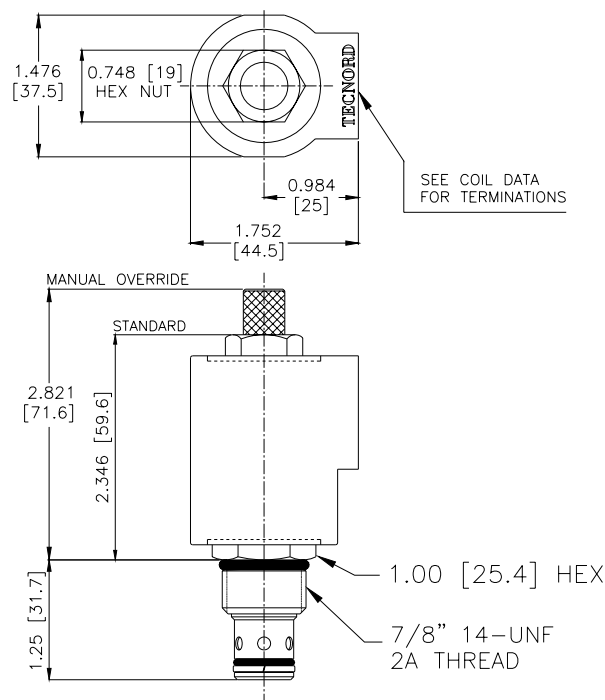


VALVE SPECIFICATIONS

Nominal Flow	10 GPM (38 LPM)
Rated Operating Pressure	1000 PSI (69 bar)
Typical Internal Leakage (150 SSU)	Negligible
Viscosity Range	36 to 3000 SSU (3 to 647 cSt)
Filtration	ISO 18/16/13
Media Operating Temp. Range	32° to 160°F (0° to 70°C)
Weight	.25 lbs (.11 kg)
Operating Fluid Media	General Purpose Hydraulic Fluid
Cartridge Torque Requirements	30 ft-lbs (40.6 Nm)
Coil Nut Torque Requirements	4-6 ft-lbs (5.4-8.1 Nm)
Cavity	DELTA 2W
Cavity Tools Kit	
(form tool, reamer, tap)	40500000
Seal Kit	21191200

WARNING: the specifications/application data shown in our catalogs and data sheets are intended only as a general guide for the product described (herein). Any specific application should not be undertaken without independent study, evaluation, and testing for suitability.

DIMENSIONS



ORDERING INFORMATION

Approximate Coil Weight: .56 lbs (.25 kg)

DE-S2F					
OPTIONS				BODIES	
Buna Standard	00			Blank	Without Body
Viton Standard	V0			N	1/2" BSP Ports
Buna, Override, Detent	0M			S	#8 SAE Ports
Viton, Override, Detent	VM				
Buna, Screen	A0				
Viton, Screen	W0				
Buna, Screen, Override	B2				
Viton, Screen, Override	V2				
Note: use screen only if flow direction is from (1) to (2)				VOLTAGE (other voltages available on request)	
				12	12 VDC
				24	24 VDC
				22	220 VAC without internal rectifier
"V" COIL TERMINATION (All DC Except as Noted)					
DL Double Lead (several types of termination can be attached on leads on request)		HC	DIN 43650 (Hirschmann) - (AC&DC)	DIA	"I" Coil AMP Superseal - Integral
		DI	Deutsch - Integral DT04-2P	DID	"I" Coil Deutsch - Integral DT04-2P
				DIJ	"I" Coil AMP Jr. Timer - Integral
				DIM	"I" Coil Metri-Pack - Integral
					IMMERSION PROOF "D" TYPE