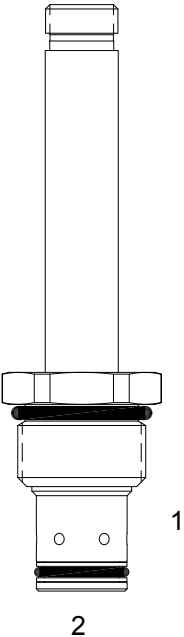


DE-S2I DIRECT ACTING POPPET, 2 WAY, NORMALLY CLOSED, BIDIRECTIONAL



DESCRIPTION

10 size, 7/8-14 thread, "Delta" series, solenoid operated, 2 way normally closed, bidirectional poppet valve.

OPERATION

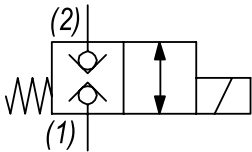
When de-energized the DE-S2I blocks flow from (1) to (2) and (2) to (1). When energized the valve allows flow from (1) to (2) and (2) to (1).

**OPERATION OF MANUAL OVERRIDE OPTION:** to override, turn the manual override screw clockwise. To release turn the manual override screw counter-clockwise.

FEATURES

- Hardened parts for long life.
- Efficient wet-armature construction.
- Cartridges are voltage interchangeable.
- Manual override option.
- Industry common cavity.
- Unitized, molded coil design.
- Continuous duty rated solenoid.
- Optional coil voltages and terminations.
- Optional "I" Coil: Weatherproof, Thermal Shock, Immersion Safe.

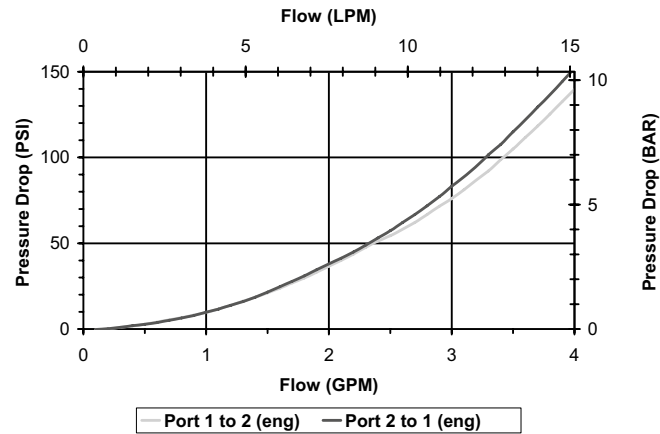
HYDRAULIC SYMBOL



For higher flows & pressures use Power Cavity  
HB-S2L

PERFORMANCE

Actual Test Data (Cartridge Only)

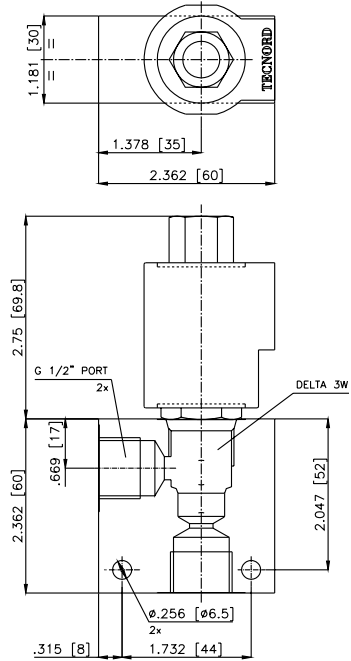
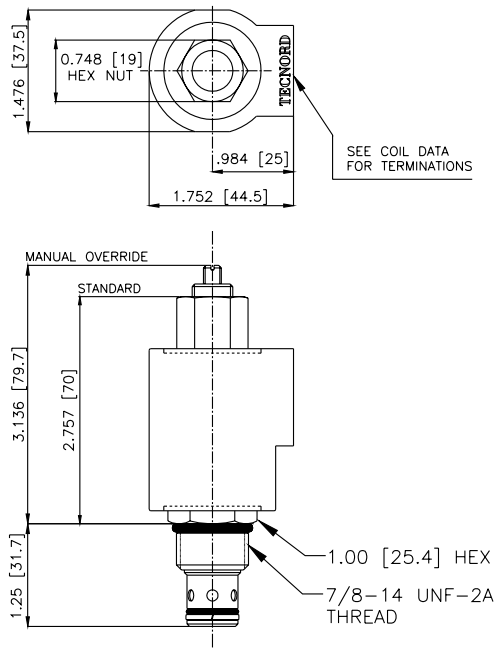


VALVE SPECIFICATIONS

Nominal Flow	3 GPM (11 LPM)
Rated Operating Pressure	3000 PSI (207 bar)
Typical Internal Leakage (150 SSU)	0-10 drops/min
Viscosity Range	36 to 3000 SSU (3 to 647 cSt)
Filtration	ISO 18/16/13
Media Operating Temp. Range	-40° to 250°F (-40° to 120°C)
Weight	.21 lbs. (.09 kg)
Operating Fluid Media	General Purpose Hydraulic Fluid
Cartridge Torque Requirements	30 ft-lbs (40.6 Nm)
Coil Nut Torque Requirements	4-6 ft-lbs (5.4-8.1 Nm)
Cavity	DELTA 2W
Cavity Tools Kit	
(form tool, reamer, tap)	40500000
Seal Kit	21191202

**WARNING:** the specifications/application data shown in our catalogs and data sheets are intended only as a general guide for the product described (herein). Any specific application should not be undertaken without independent study, evaluation, and testing for suitability.

DIMENSIONS



ORDERING INFORMATION

Approximate Coil Weight: .56 lbs (.25 kg)

<b>DE-S2I</b>							
<b><u>OPTIONS</u></b>				<b><u>BODIES</u></b>			
Buna Standard	<b>00</b>			<b>Blank</b>	Without Body		
Viton Standard	<b>V0</b>			<b>N</b>	3/8 NPT Ports		
Buna, Override, Detent	<b>0M</b>			<b>S</b>	#8 SAE Ports		
Viton, Override, Detent	<b>VM</b>						
Buna, Override, Knob	<b>0K</b>						
Viton, Override, Knob	<b>WK</b>						
Buna, Screen	<b>A0</b>						
Viton, Screen	<b>W0</b>						
Buna, Screen, Override	<b>B2</b>			<b>12</b>	12 VDC		
Viton, Screen, Override	<b>V2</b>			<b>24</b>	24 VDC		
Buna, Screen, Override, Knob	<b>B5</b>			<b>22</b>	220 VAC without internal rectifier		
Viton, Screen, Override, Knob	<b>V5</b>						
<b>Note: use screen only if flow direction is from (1) to (2)</b>							
<b><u>"V" COIL TERMINATION</u></b>							
<i>(All DC Except as Noted)</i>							