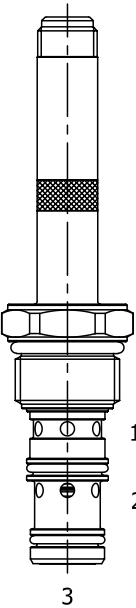


DF-S3G DIRECT ACTING POPPET, 3 WAY 2 POSITION



DESCRIPTION

10 size, 7/8-14 thread, "Delta" series, solenoid operated, 3 way 2 position, poppet valve.

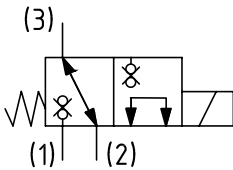
OPERATION

When de-energized the DF-S3G allows flow from (3) to (2) and blocks flow at port (1). When energized the valve allows flow from (1) to (2) and blocks flow at port (3).

FEATURES

- Hardened parts for long life.
- Efficient wet-armature construction.
- Cartridges are voltage interchangeable.
- Industry common cavity.
- Unitized, molded coil design.
- Continuous duty rated solenoid.
- Optional coil voltages and terminations.
- Optional "I" Coil: Weatherproof, Thermal Shock, Immersion Safe.

HYDRAULIC SYMBOL

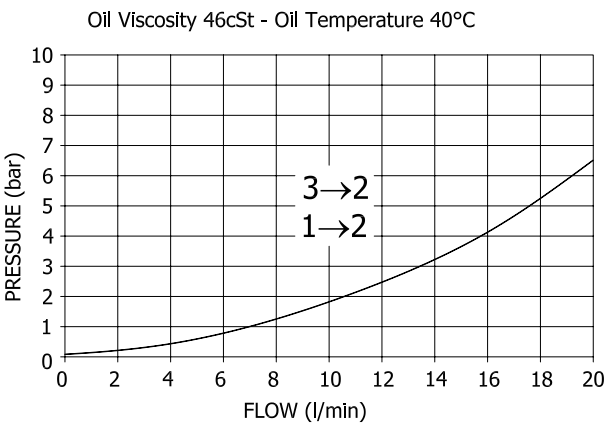


VALVE SPECIFICATIONS

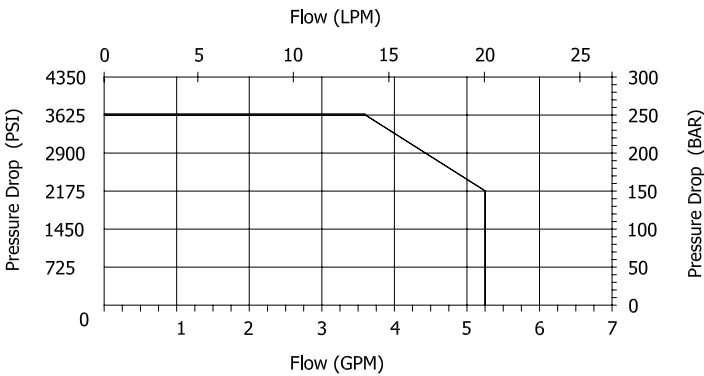
Nominal Flow	10 GPM (38 LPM)
Rated Operating Pressure	3000 PSI (207 bar)
Typical Internal Leakage (150 SSU)	5 cu in/min (82 ml/min)
Viscosity Range	36 to 3000 SSU (3 to 647 cSt)
Filtration	ISO 18/16/13
Media Operating Temp. Range	-40° to 250°F (-40° to 120°C)
Weight	.28 lbs (.12 kg)
Operating Fluid Media	General Purpose Hydraulic Fluid
Cartridge Torque Requirements	30 ft-lbs (40.6 Nm)
Coil Nut Torque Requirements	4-6 ft-lbs (5.4-8.1 Nm)
Cavity	DELTA 3W
Cavity Tools Kit (form tool, reamer, tap)	40500001
Seal Kit	21191210

PERFORMANCE

Actual Test Data (Cartridge Only)



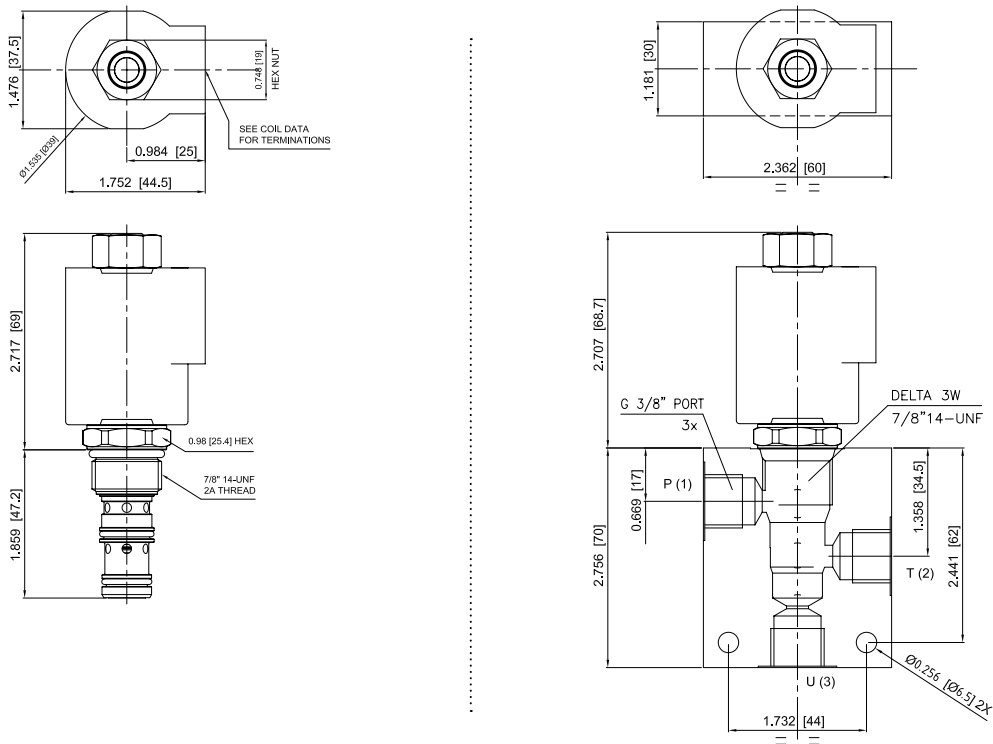
DE-RATING OF PRESSURE VS. FLOW



WARNING: the specifications/application data shown in our catalogs and data sheets are intended only as a general guide for the product described (herein). Any specific application should not be undertaken without independent study, evaluation, and testing for suitability.

VI 3/2023

DIMENSIONS



ORDERING INFORMATION

Approximate Coil Weight: .56 lbs (.25 kg)

DF-S3G - - - -

- OPTIONS**
- Buna Standard **00**
 - Viton Standard **V0**
 - Buna, Screen **A0**
 - Viton, Screen **W0**

- BODIES**
- Blank Without Body
 - N** 3/8" BSP Ports
 - S** #6 SAE Ports

Note: use screen only if flow direction is from (1) to (2)

- VOLTAGE** (other voltages available on request)
- 12** 12 VDC
 - 24** 24 VDC

"V" COIL TERMINATION
(All DC Except as Noted)

- DL** Double Lead
(several types of termination can be attached on leads on request)

- HC** DIN 43650 (Hirschmann) - (AC&DC)
DI Deutsch - Integral DT04-2P

- IMMERSION PROOF "D" TYPE**
- DIA** "I" Coil AMP Superseal - Integral
 - DID** "I" Coil Deutsch - Integral DT04-2P
 - DIJ** "I" Coil AMP Jr. Timer - Integral
 - DIM** "I" Coil Metri-Pack - Integral