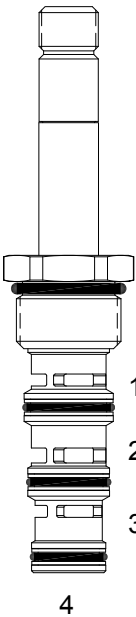


DG-S4F DIRECT ACTING SPOOL, 4 WAY 2 POSITION, ENERGIZED TO BLOCK



DESCRIPTION

10 size, 7/8-14 thread, "Delta" series, solenoid operated, 4 way 2 position, energized to block spool valve.

OPERATION

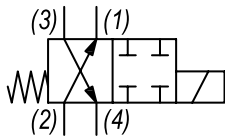
When de-energized the DG-S4F allows flow from (2) and (1), and from (3) to (4). When energized the valve blocks flow at all ports.

OPERATION OF MANUAL OVERRIDE OPTION: to override, turn the manual override screw counterclockwise. To release turn the manual override screw clockwise.

FEATURES

- Hardened parts for long life.
- Efficient wet-armature construction.
- Cartridges are voltage interchangeable.
- Manual override option.
- Industry common cavity.
- Unitized, molded coil design.
- Continuous duty rated solenoid.
- Optional coil voltages and terminations.
- Optional "I" Coil: Weatherproof, Thermal Shock, Immersion Safe.

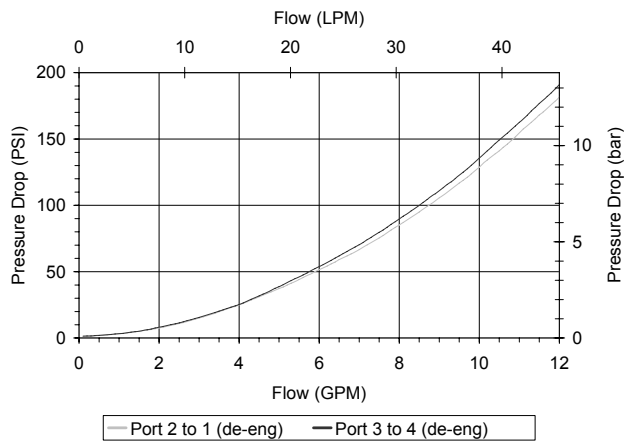
HYDRAULIC SYMBOL



For higher pressures see HG-S4F. Operational shift limit, 6 GPM (23 LPM). For shift performance consult chart.

PERFORMANCE

Actual Test Data (Cartridge Only)



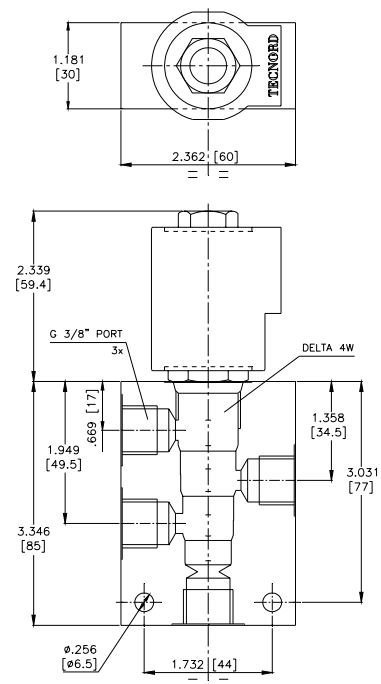
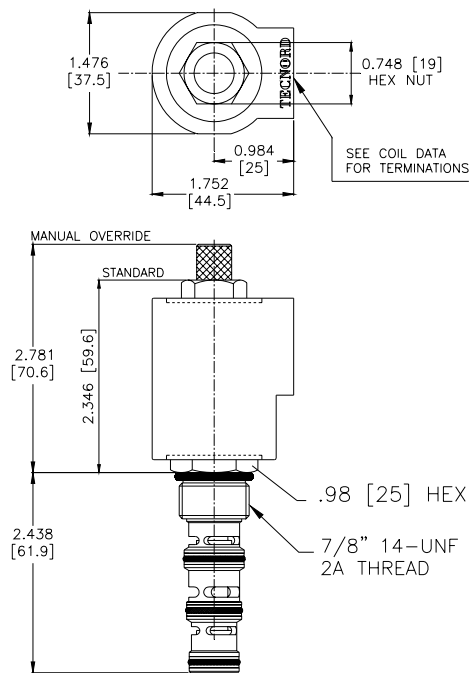
VALVE SPECIFICATIONS

Nominal Flow	6 GPM (23 LPM)
Rated Operating Pressure	3000 PSI (207 bar)
Typical Internal Leakage (150 SSU)	5 cu in/min (82 ml/min) per path
Viscosity Range	36 to 3000 SSU (3 to 647 cSt)
Filtration	ISO 18/16/13
Media Operating Temp. Range	-40° to 250°F (-40° to 120°C)
Weight	.31 lbs (.14 kg)
Operating Fluid Media	General Purpose Hydraulic Fluid
Cartridge Torque Requirements	30 ft-lbs (40.6 Nm)
Coil Nut Torque Requirements	4-6 ft-lbs (5.4-8.1 Nm)
Cavity	DELTA 4W
Cavity Tools Kit	
(form tool, reamer, tap)	40500002
Seal Kit	21191214

WARNING: the specifications/application data shown in our catalogs and data sheets are intended only as a general guide for the product described (herein). Any specific application should not be undertaken without independent study, evaluation, and testing for suitability.

11/3/2023

DIMENSIONS



ORDERING INFORMATION

Approximate Coil Weight: .56 lbs (.25 kg)

Approximate Coil Weight: .56 lbs (.25 kg)

<p>DG-S4F</p> <p><u>OPTIONS</u></p> <p>Buna Standard 00</p> <p>Viton Standard V0</p> <p>Buna, Override, Detent 0M</p> <p>Viton, Override, Detent VM</p> <p>Buna, Override, Non-Detent B1</p> <p>Viton, Override, Non-Detent V1</p>	<p style="text-align: center;">- - - -</p>	<p><u>BODIES</u></p> <p>Blank Without Body</p> <p>N 3/8" BSP Ports</p> <p>S #6 SAE Ports</p> <p><u>VOLTAGE</u> <i>(other voltages available on request)</i></p> <p>12 12 VDC</p> <p>24 24 VDC</p> <p>22 220 VAC without internal rectifier</p>
--	--	---

<p><u>"V" COIL TERMINATION</u></p> <p><i>(All DC Except as Noted)</i></p>	<p style="text-align: center;">- - - -</p>	<p><u>IMMERSION PROOF "D" TYPE</u></p> <p>DIA "I" Coil AMP Superseal - Integral</p> <p>DID "I" Coil Deutsch - Integral DT04-2P</p> <p>DIJ "I" Coil AMP Jr. Timer - Integral</p> <p>DIM "I" Coil Metri-Pack - Integral</p>
--	--	--

<p>DL Double Lead</p> <p><i>(several types of termination can be attached on leads on request)</i></p>	<p>HC DIN 43650 (Hirschmann) - (AC&DC)</p> <p>DI Deutsch - Integral DT04-2P</p>	
---	---	--