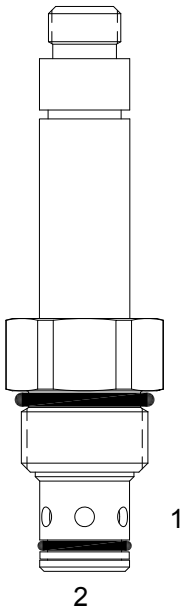


HE-S2B PILOT OPERATED POPPET, 2 WAY NORMALLY CLOSED



DESCRIPTION

“High Pressure”10 size, 7/8-14 thread, “Delta” series, solenoid operated, 2 way normally closed, pilot operated poppet valve with reverse flow energized and de-energized.

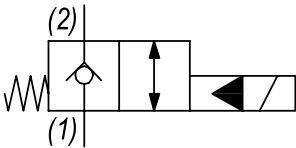
OPERATION

When de-energized the HE-S2B acts as a check valve, allowing flow to pass from (2) to (1), while blocking flow from (1) to (2). When energized the valve opens allowing flow to pass from (1) to (2).

FEATURES

- Hardened parts for long life.
- Efficient wet-armature construction.
- Cartridges are voltage interchangeable.
- Industry common cavity.
- Unitized, molded coil design.
- Continuous duty rated solenoid.
- Optional coil voltages and terminations.
- Optional “I” Coil: Weatherproof, Thermal Shock, Immersion Safe.

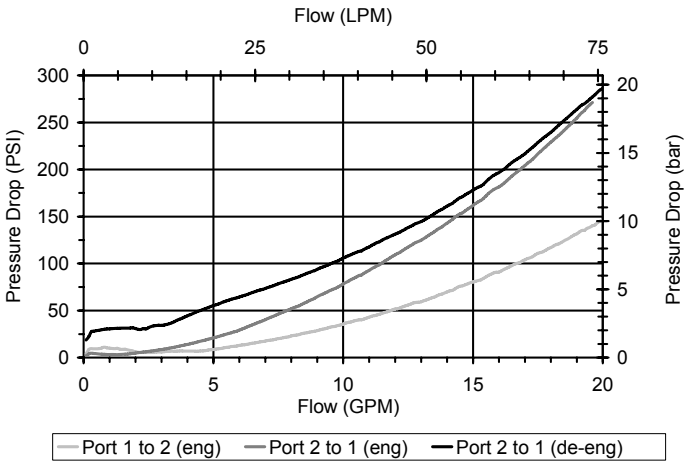
HYDRAULIC SYMBOL



Uses “L” Coil.

PERFORMANCE

Actual Test Data (Cartridge Only)

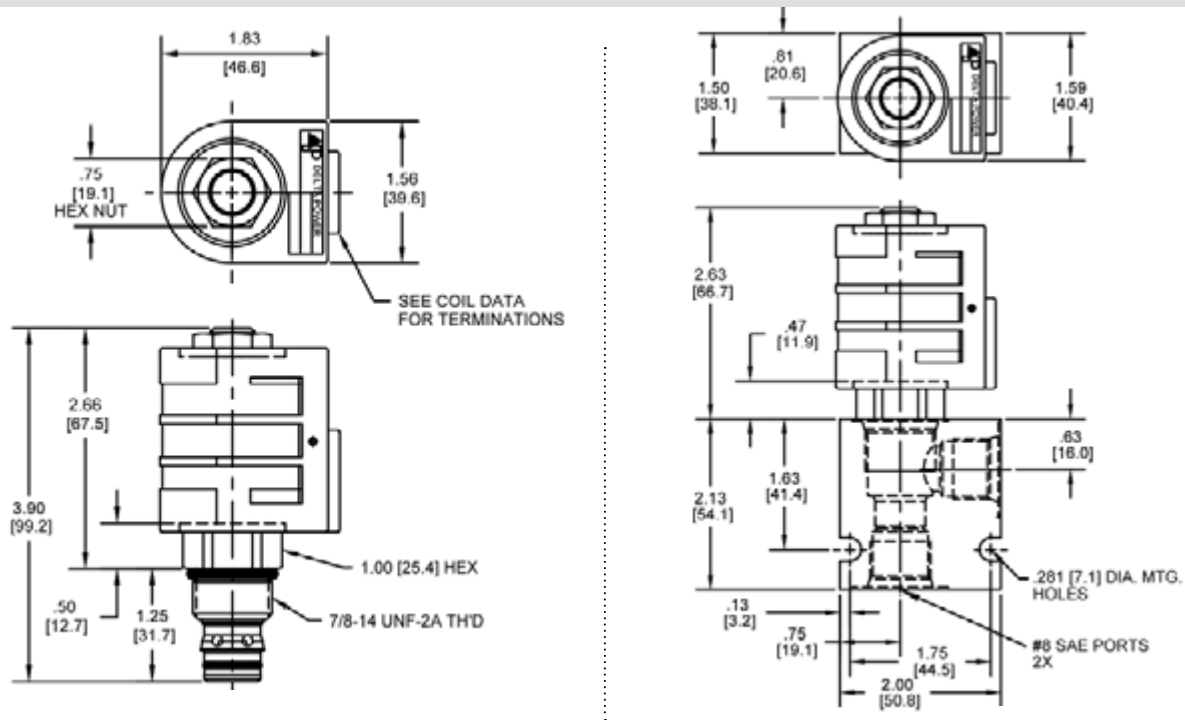


VALVE SPECIFICATIONS

Nominal Flow	15 GPM (57 LPM)
Rated Operating Pressure	4000 PSI (276 bar)
Typical Internal Leakage (150 SSU)	0-5 drops/min
Viscosity Range	36 to 3000 SSU (3 to 647 cSt)
Filtration	ISO 18/16/13
Media Operating Temp. Range	-40° to 250°F (-40° to 120°C)
Weight	.39 lbs (.17 kg)
Operating Fluid Media	General Purpose Hydraulic Fluid
Cartridge Torque Requirements	50 ft-lbs (67.8 Nm)
Coil Nut Torque Requirements	4-6 ft-lbs (5.4-8.1 Nm)
Cavity	DELTA 2W
Cavity Tools Kit	
(form tool, reamer, tap)	40500000
Seal Kit	21191200

**WARNING:** the specifications/application data shown in our catalogs and data sheets are intended only as a general guide for the product described (herein). Any specific application should not be undertaken without independent study, evaluation, and testing for suitability.

DIMENSIONS



ORDERING INFORMATION

Approximate Coil Weight: .68 lbs (.31 kg)

<b>HE-S2B</b> - - - -					
<b>OPTIONS</b>		<b>BODIES</b>		<b>Note: Aluminum, NOT durability rated for 4000 PSI. Consult factory for body options.</b>	
Buna Standard	00	Blank	Without Body		
Viton Standard	V0	N	3/8 NPTF Ports		
		S	#8 SAE Ports		
		<b>VOLTAGE</b>			
		06	6 VDC		
		12	12 VDC		
		24	24 VDC		
		36	36 VDC		
		48	48 VDC		
		25	25 VAC		
		11	120 VAC		
		22	220 VAC		
		44	440 VAC		
<b>"L" COIL TERMINATION</b> (All DC Except as Noted)				<b>IMMERSION PROOF "L" TYPE</b>	
DL Double Lead		SS Single Spade		IA	"I" Coil AMP Superseal - Integral
DT Deutsch on Leads DT04-2P		DS Double Spade		ID	"I" Coil Deutsch - Integral DT04-2P
ML Metri-Pack on Leads		HC DIN 43650 (Hirschmann) - (AC&DC)		IJ	"I" Coil AMP Jr. Timer - Integral
PL Packard on Leads		CL Conduit Lead - (AC Only)		IM	"I" Coil Metri-Pack - Integral
WL Weatherpack on Leads		DI Deutsch - Integral DT04-2P			

W 3/ 2023

**WARNING:** the specifications/application data shown in our catalogs and data sheets are intended only as a general guide for the product described (herein). Any specific application should not be undertaken without independent study, evaluation, and testing for suitability.