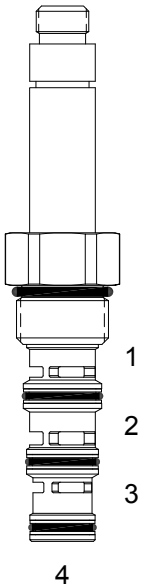


**HG-S4B**
DIRECT ACTING SPOOL, 4 WAY 2 POSITION, CLOSED CENTER



**DESCRIPTION**

“High Pressure” 10 size, 7/8-14 thread, “Delta” series, solenoid operated, 4 way 2 position closed center spool valve.

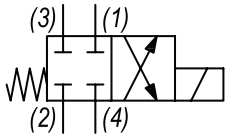
**OPERATION**

When de-energized the HG-S4B blocks flow at all ports. When energized the valve allows flow from (2) to (1) and from (3) to (4).

**FEATURES**

- Hardened parts for long life.
- Efficient wet-armature construction.
- Cartridges are voltage interchangeable.
- Industry common cavity.
- Unitized, molded coil design.
- Continuous duty rated solenoid.
- Optional coil voltages and terminations.
- Optional “I” Coil: Weatherproof, Thermal Shock, Immersion Safe.

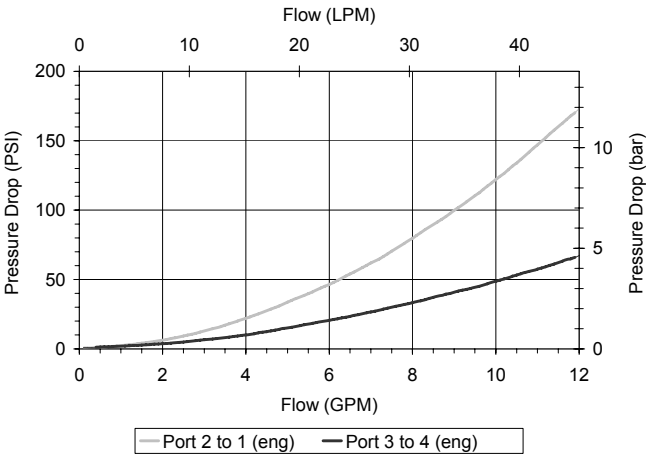
**HYDRAULIC SYMBOL**



Uses “L” Coils.  
Pressure differential between ports should not exceed 3000 PSI.

**PERFORMANCE**

Actual Test Data (Cartridge Only)



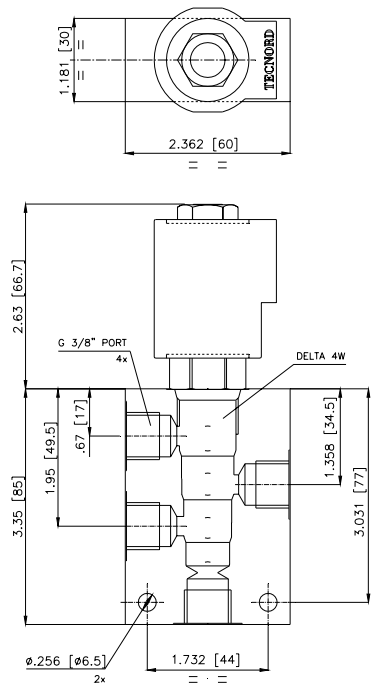
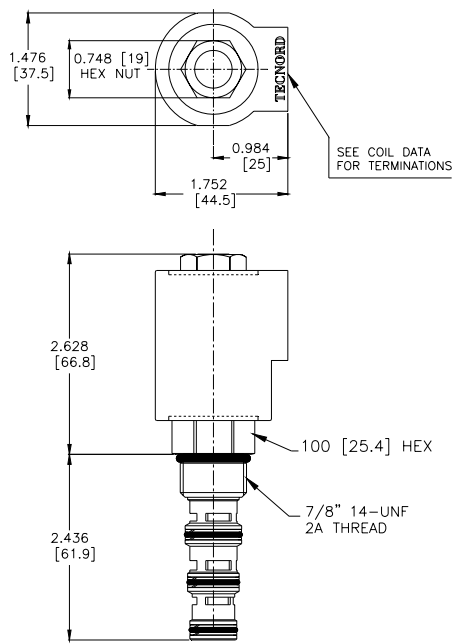
**VALVE SPECIFICATIONS**

Nominal Flow	10 GPM (38 LPM)
Rated Operating Pressure	4000 PSI (276 bar)
Typical Internal Leakage (150 SSU)	10 cu in/min (164 ml/min) per path
Viscosity Range	36 to 3000 SSU (3 to 647 cSt)
Filtration	ISO 18/16/13
Media Operating Temp. Range	-40° to 250°F (-40° to 120°C)
Weight	.44 lbs (.20 kg)
Operating Fluid Media	General Purpose Hydraulic Fluid
Cartridge Torque Requirements	30 ft-lbs (40.6 Nm)
Coil Nut Torque Requirements	4-6 ft-lbs (5.4-8.1 Nm)
Cavity	DELTA 4W
Cavity Tools Kit	
(form tool, reamer, tap)	40500002
Seal Kit	21191214

**WARNING:** the specifications/application data shown in our catalogs and data sheets are intended only as a general guide for the product described (herein). Any specific application should not be undertaken without independent study, evaluation, and testing for suitability.

11/ 3/2023

DIMENSIONS



ORDERING INFORMATION

Approximate Coil Weight: .68 lbs (.31 kg)

HG-S4B - - - -

**OPTIONS**

Buna Standard 00  
Viton Standard V0

**BODIES**

Blank Without Body  
N 3/8" BSP Ports  
S #6 SAE Ports

Note: Aluminum, NOT durability rated for 4000 PSI. Consult factory for body options.

**VOLTAGE** (other voltages available on request)

12 12 VDC  
24 24 VDC  
22 220 VAC without internal rectifier

**"L" COIL TERMINATION**

(All DC Except as Noted)

**DL** Double Lead  
(several types of termination can be attached on leads on request)

**HC** DIN 43650 (Hirschmann) - (AC&DC)  
**DI** Deutsch - Integral DT04-2P

**IMMERSION PROOF "L" TYPE**

**LIA** "I" Coil AMP Superseal - Integral  
**LID** "I" Coil Deutsch - Integral DT04-2P  
**LIJ** "I" Coil AMP Jr. Timer - Integral  
**LIM** "I" Coil Metri-Pack - Integral