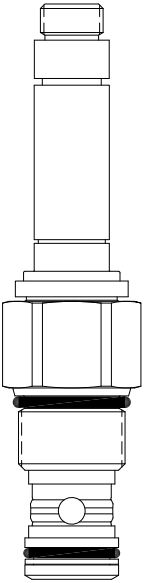


HT-S2B PILOT OPERATED POPPET, 2 WAY NORMALLY CLOSED



DESCRIPTION

“High pressure” 12 size, 1 1/16-12 thread, “Tecnord” series, solenoid operated, 2 way normally closed, pilot operated poppet valve with reverse flow energized and de-energized.

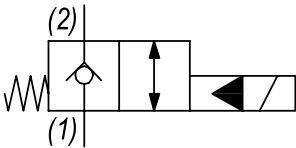
OPERATION

When de-energized the HT-S2B blocks flow from (1) to (2) and allows reverse flow from (2) to (1). When energized the valve allows flow from (1) to (2) and from (2) to (1).

FEATURES

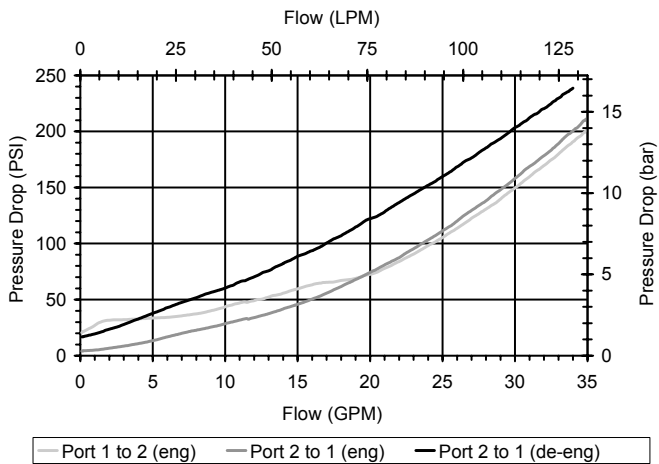
- Hardened parts for long life.
- Efficient wet-armature construction.
- Cartridges are voltage interchangeable.
- Industry common cavity.
- Unitized, molded coil design.
- Continuous duty rated solenoid.
- Optional coil voltages and terminations.

HYDRAULIC SYMBOL



PERFORMANCE

Actual Test Data (Cartridge Only)

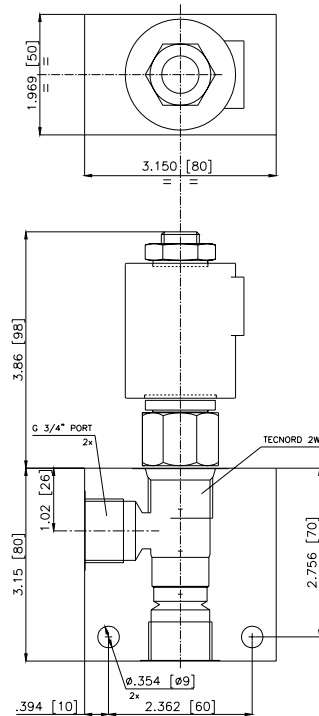
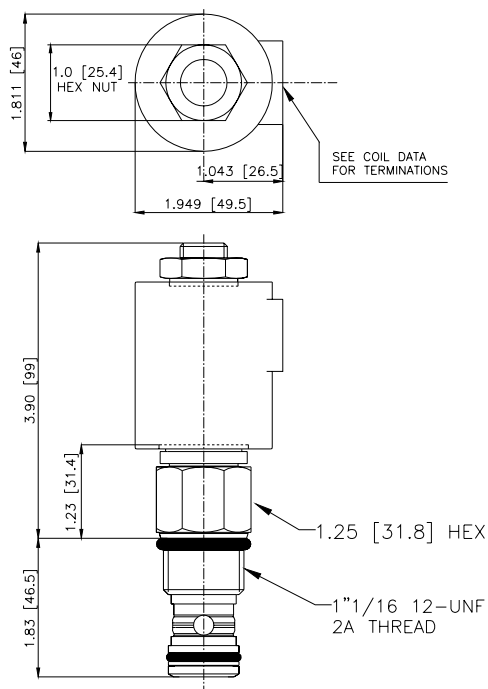


VALVE SPECIFICATIONS

| | |
|------------------------------------|---------------------------------|
| Nominal Flow | 25 GPM (95 LPM) |
| Rated Operating Pressure | 5000 PSI (345 bar) |
| Typical Internal Leakage (150 SSU) | 0-8 drops/min |
| Viscosity Range | 36 to 3000 SSU (3 to 647 cSt) |
| Filtration | ISO 18/16/13 |
| Media Operating Temp. Range | -40° to 250°F (-40° to 120°C) |
| Weight | .94 lbs (.43 kg) |
| Operating Fluid Media | General Purpose Hydraulic Fluid |
| Cartridge Torque Requirements | 50 ft-lbs (67.8 Nm) |
| Coil Nut Torque Requirements | 5-7 ft-lbs (6.8-9.5 Nm) |
| Cavity | TECNORD 2W |
| Cavity Tools Kit | |
| (form tool, reamer, tap) | 40500032 |
| Seal Kit | 21191301 |

WARNING: the specifications/application data shown in our catalogs and data sheets are intended only as a general guide for the product described (herein). Any specific application should not be undertaken without independent study, evaluation, and testing for suitability.

DIMENSIONS



ORDERING INFORMATION

Approximate Coil Weight: .78 lbs (.35 kg)

HT-S2B - - - - -

OPTIONS

- Buna Standard 00
- Viton Standard V0
- Buna, Screen A0
- Viton, Screen W0

Note: use screen only if flow direction is from (1) to (2)

"T" COIL TERMINATION
(All DC Except as Noted)

- Double Lead DL
- (several types of termination can be attached on leads on request)
- DIN 43650 (Hirschmann) - (AC&DC) HC

BODIES

- Blank Without Body
- N 3/4" BSP Ports
- S #12 SAE Ports

VOLTAGE (other voltages available on request)

- 12 12 VDC
- 24 24 VDC
- 22 220 VAC without internal rectifier