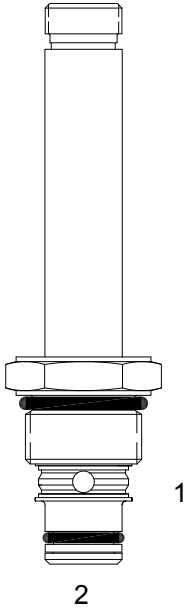


**PB-S2D PILOT OPERATED POPPET, 2 WAY NORMALLY OPEN**



**DESCRIPTION**

8 size, 3/4-16 thread, "Power" series, solenoid operated, 2 way normally open, pilot operated poppet valve with free reverse flow energized and de-energized.

**OPERATION**

When de-energized the PB-S2D allows flow from (1) to (2) or (2) to (1).

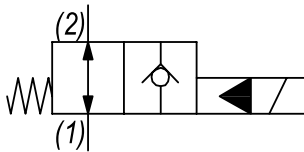
When energized the valve blocks flow from (1) to (2) and allows flow from (2) to (1).

**OPERATION OF MANUAL OVERRIDE OPTION:** to override, turn the manual override screw clockwise. To release turn the manual override screw counterclockwise.

**FEATURES**

- Hardened parts for long life.
- Efficient wet-armature construction.
- Cartridges are voltage interchangeable.
- Manual override option.
- Industry common cavity.
- Unitized, molded coil design.
- Continuous duty rated solenoid.
- Optional coil voltages and terminations.
- Optional "I" Coil: Weatherproof, Thermal Shock, Immersion Safe.

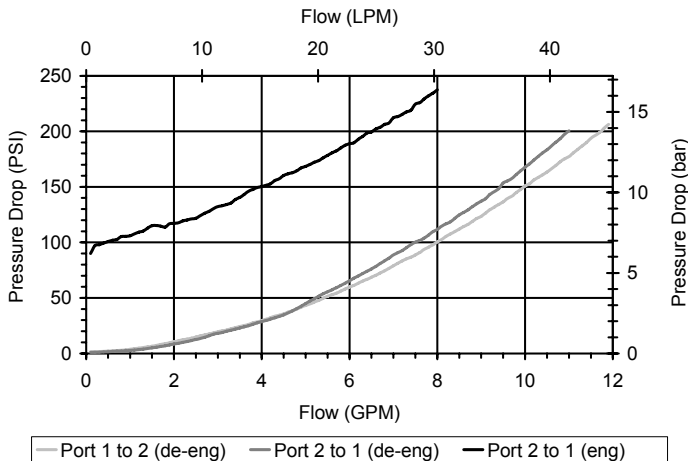
**HYDRAULIC SYMBOL**



Unshifted limit of 10 GPM (38 LPM) from (1) to (2) energized and from (2) to (1) de-energized. For shifted flow performance consult chart.

**PERFORMANCE**

Actual Test Data (Cartridge Only)

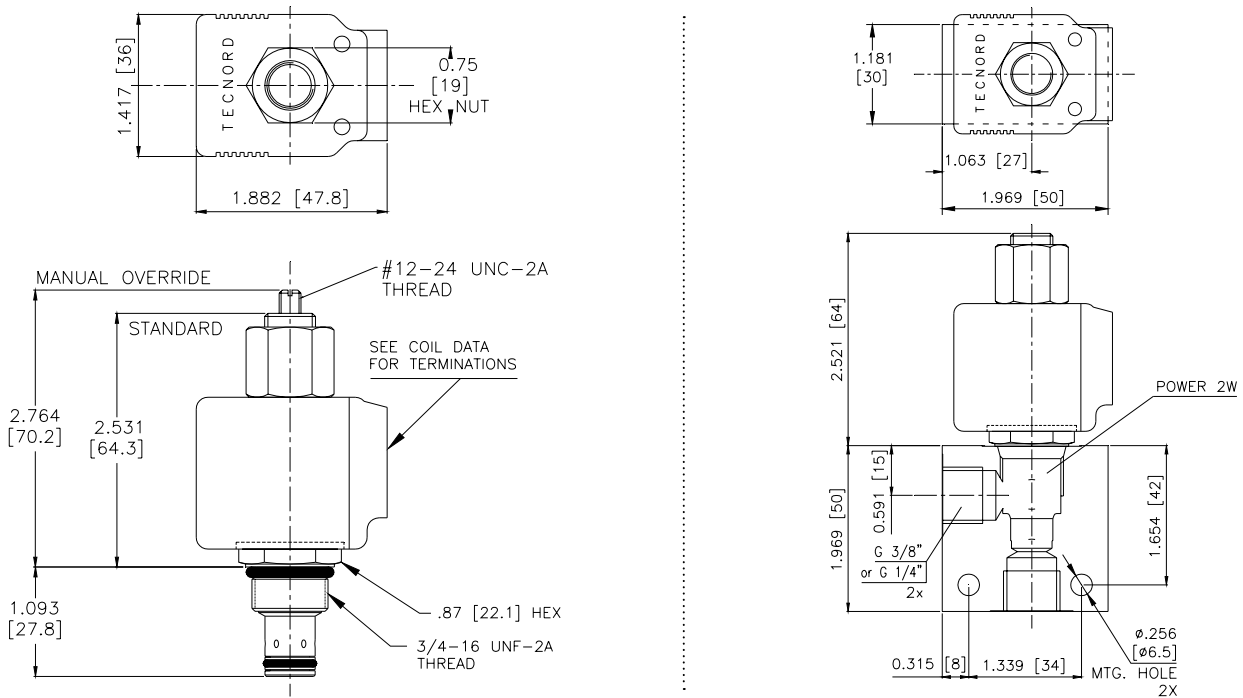


**VALVE SPECIFICATIONS**

|   |                                 |
|---|---------------------------------|
| Nominal Flow                              | 10 GPM (38 LPM)                 |
| Rated Operating Pressure                  | 3500 PSI (241 bar)              |
| Typical Internal Leakage (150 SSU)        | 0-5 drops/min                   |
| Viscosity Range                           | 36 to 3000 SSU (3 to 647 cSt)   |
| Filtration                                | ISO 18/16/13                    |
| Media Operating Temp. Range               | -40° to 250°F (-40° to 120°C)   |
| Weight                                    | .22 lbs (.10 kg)                |
| Operating Fluid Media                     | General Purpose Hydraulic Fluid |
| Cartridge Torque Requirements             | 25 ft-lbs (34 Nm)               |
| Coil Nut Torque Requirements              | 4-6 ft-lbs (5.4-8.1 Nm)         |
| Cavity                                    | POWER 2W                        |
| Cavity Tools Kit (form tool, reamer, tap) | 40500005                        |
| Seal Kit                                  | 21191100                        |

**WARNING:** the specifications/application data shown in our catalogs and data sheets are intended only as a general guide for the product described (herein). Any specific application should not be undertaken without independent study, evaluation, and testing for suitability.

**DIMENSIONS**



**ORDERING INFORMATION**

Approximate Coil Weight: .42 lbs (.19 kg)

**PB-S2D**

- OPTIONS**
- Buna Standard **00**
  - Viton Standard **V0**
  - Buna, Override, Detent **0M**
  - Viton, Override, Detent **VM**
  - Buna, Override, Knob **0K**
  - Viton, Override, Knob **VK**
  - Buna, Screen **A0**
  - Viton, Screen **W0**
  - Buna, Screen, Override **B2**
  - Viton, Screen, Override **V2**
  - Buna, Screen, Override, Knob **B5**
  - Viton, Screen, Override, Knob **V5**

**Note: use screen only if flow direction is from (1) to (2)**

- BODIES**
- Blank Without Body
  - N** 1/4" BSP Ports
  - N1** 3/8" BSP Ports
  - S** #6 SAE Ports

- VOLTAGE** (other voltages available on request)
- 12** 12 VDC
  - 24** 24 VDC
  - 22** 220 VAC with molded full wave rectifier

**"P" TYPE "J" COIL TERMINATION**

- JA** "J" Coil AMP Superseal - Integral
- JD** "J" Coil Deutsch - Integral DT04-2P
- JJ** "J" Coil AMP Jr. Time - Integral
- JL** "J" Coil Double Lead
- JH** "J" Coil DIN 43650 (Hirschmann)