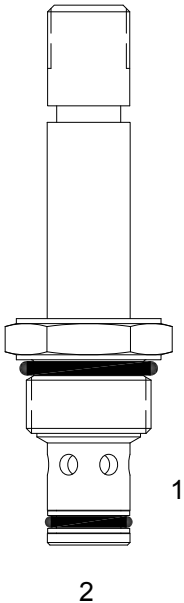


PB-S2G DIRECT ACTING SPOOL, 2 WAY NORMALLY CLOSED



DESCRIPTION

8 size, 3/4-16 thread, "Power" series, solenoid operated, 2 way normally closed, spool valve.

OPERATION

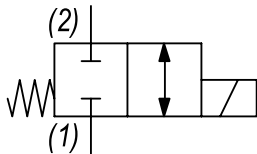
When de-energized the PB-S2G blocks flow from (1) to (2) and (2) to (1). When energized the valve allows flow from (1) to (2) and (2) to (1).

OPERATION OF MANUAL OVERRIDE OPTION: to override, pull knob out. On the detented version, after pulling knob out twist 180 degrees and release. The valve will remain in that position.

FEATURES

- Hardened parts for long life.
- Efficient wet-armature construction.
- Cartridges are voltage interchangeable.
- Manual override option.
- Industry common cavity.
- Unitized, molded coil design.
- Continuous duty rated solenoid.
- Optional coil voltages and terminations.
- Optional "I" Coil: Weatherproof, Thermal Shock, Immersion Safe.

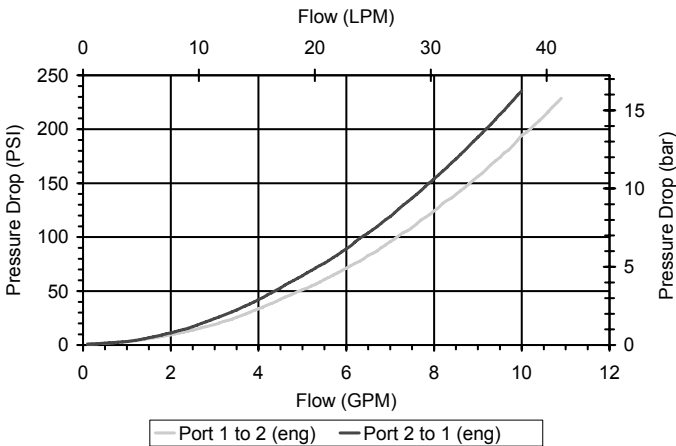
HYDRAULIC SYMBOL



Operational shift limit in (2) to (1) direction is 4 GPM (15 LPM). For shifted flow performance consult chart.

PERFORMANCE

Actual Test Data (Cartridge Only)



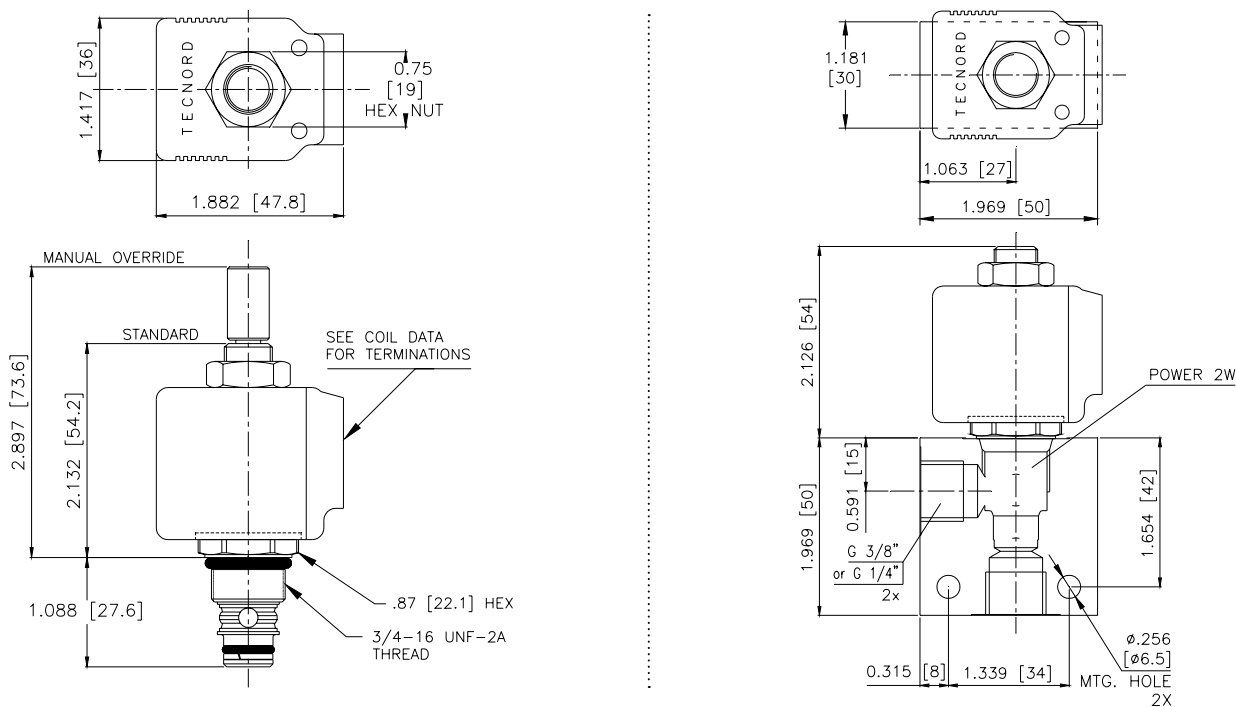
VALVE SPECIFICATIONS

Nominal Flow	8 GPM (30 LPM) from (1) to (2) 4 GPM (15 LPM) from (2) to (1)
Rated Operating Pressure	3000 PSI (207 bar)
Typical Internal Leakage (150 SSU)	5 cu in/min (82 ml/min)
Viscosity Range	36 to 3000 SSU (3 to 647 cSt)
Filtration	ISO 18/16/13
Media Operating Temp. Range	-40° to 250°F (-40° to 120°C)
Weight	.19 lbs (.09 kg)
Operating Fluid Media	General Purpose Hydraulic Fluid
Cartridge Torque Requirements	25 ft-lbs (34 Nm)
Coil Nut Torque Requirements	4-6 ft-lbs (5.4-8.1 Nm)
Cavity	POWER 2W
Cavity Tools Kit	
(form tool, reamer, tap)	40500005
Seal Kit	21191102

WARNING: the specifications/application data shown in our catalogs and data sheets are intended only as a general guide for the product described (herein). Any specific application should not be undertaken without independent study, evaluation, and testing for suitability.

11/3/2023

DIMENSIONS



ORDERING INFORMATION

Approximate Coil Weight: .42 lbs (.19 kg)

PB-S2G

OPTIONS

- Buna Standard 00
- Viton Standard V0
- Buna, Override, Detent 0M
- Viton, Override, Detent VM
- Buna, Screen A0
- Viton, Screen W0
- Buna, Override, Non-Detent B1
- Viton, Override, Non-Detent V1
- Buna, Screen, Override, Non-Detent B3
- Viton, Screen, Override, Non-Detent V3
- Buna, Screen, Override, Detent B4
- Viton, Screen, Override, Detent V4

Note: use screen only if flow direction is from (1) to (2)

BODIES

- Blank Without Body
- N 1/4" BSP Ports
- N1 3/8" BSP Ports
- S #6 SAE Ports

VOLTAGE (other voltages available on request)

- 12 12 VDC
- 24 24 VDC
- 22 220 VAC without internal rectifier

"P" TYPE "J" COIL TERMINATION

- JA "J" Coil AMP Superseal - Integral
- JD "J" Coil Deutsch - Integral DT04-2P
- JJ "J" Coil AMP Jr. Time - Integral
- JL "J" Coil Double Lead
- JH "J" Coil DIN 43650 (Hirschmann)