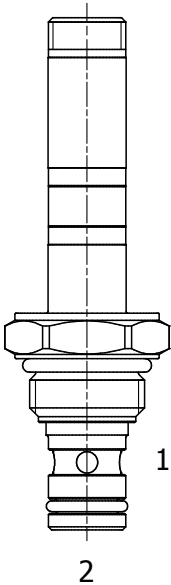


PB-S2I DIRECT ACTING POPPET, 2 WAY, NORMALLY CLOSED, BIDIRECTIONAL



DESCRIPTION
8 size, 3/4-16 thread, "Power" series, solenoid operated, 2 way normally closed, bidirectional poppet valve.

OPERATION
When de-energized the PB-S2I blocks flow from (1) to (2) and from (2) to (1). When energized the valve allows flow from (1) to (2) and from (2) to (1).

MANUAL OVERRIDE OPTION: to override, turn clockwise the manual override screw. To release, turn the manual override screw counter-clockwise.

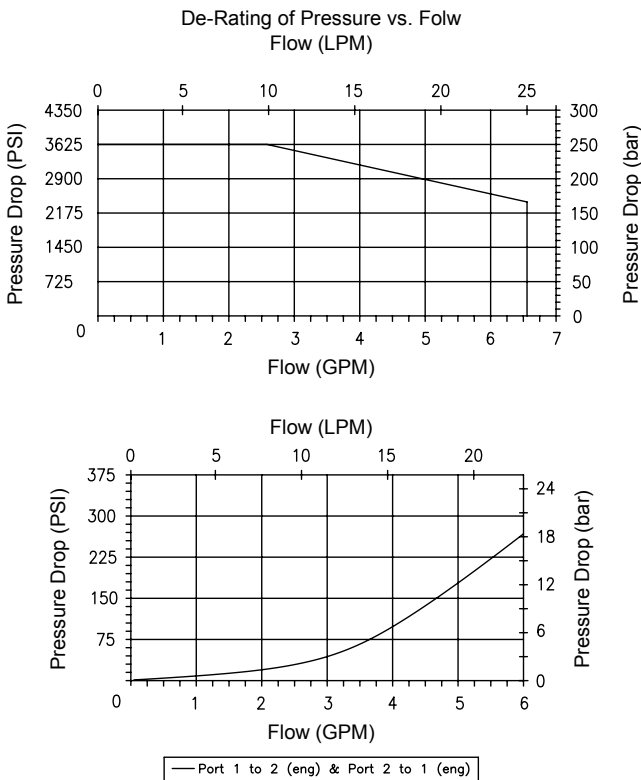
- FEATURES**
- Hardened parts for long life.
 - Efficient wet-armature construction.
 - Cartridges are voltage interchangeable.
 - Industry common cavity.
 - Unitized, molded coil design.
 - Continuous duty rated solenoid.
 - Optional coil voltages and terminations.



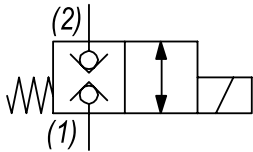
Zinc Nickel plating on all exposed surfaces (>500hours corrosion resistance).
For higher pressure and higher flow option for this function see HB-S2L

PERFORMANCE

Actual Test Data (Cartridge Only)



HYDRAULIC SYMBOL

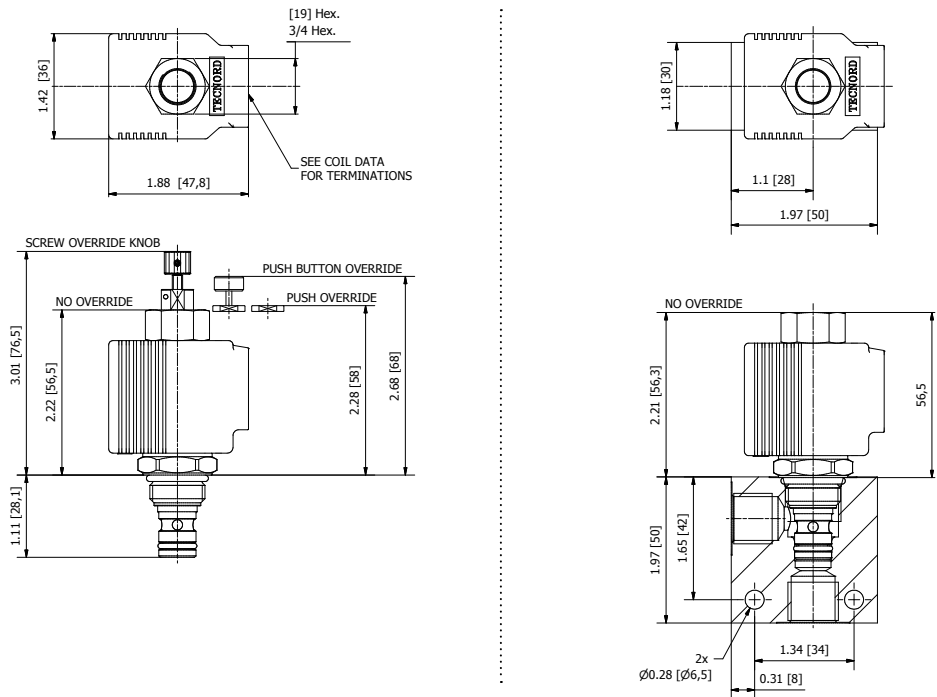


VALVE SPECIFICATIONS

Nominal Flow	3 GPM (11 LPM)
Rated Operating Pressure	3600 PSI (250 bar)
Typical Internal Leakage (150 SSU)	0-10 drops/min at 3600 PSI (250 bar)
Viscosity Range	36 to 3000 SSU (3 to 647 cSt)
Filtration	ISO 18/16/13
Media Operating Temp. Range	-40° to 210°F (-40° to 100°C) BUNA seals -4° to 250°F (-20° to 120°C) VITON seals
Weight	.29 lbs (.13 kg)
Operating Fluid Media	General Purpose Hydraulic Fluid
Cartridge Torque Requirements	25 ft-lbs (34 Nm)
Coil Nut Torque Requirements	4-6 ft-lb (5.4-8.1 Nm)
Cavity	POWER 2W
Cavity Tools Kit	40500005
Seal Kit	Buna Kit: 64900222 Viton Kit: 64900223

WARNING: the specifications/application data shown in our catalogs and data sheets are intended only as a general guide for the product described (herein). Any specific application should not be undertaken without independent study, evaluation, and testing for suitability.

DIMENSIONS



ORDERING INFORMATION

PB - S2I - - - -			
OPTIONS		BODIES	
Buna Standard	00	Blank	Without Body
Viton Standard	V0	N	1/4 NPTF Ports
Buna Knob	0K	S	#6 SAE Ports
Viton Knob	VK	VOLTAGE	
		06	6 VDC
		12	12 VDC
		24	24 VDC
		36	36 VDC
		48	48 VDC
		25	24 VAC
		11	120 VAC
		22	220 VAC
		44	440 VAC

Approximate Coil Weight: .42 lbs (.19 kg)

"P" COIL TERMINATION		IMMERSION PROOF "I" COIL TERMINATION	
DL Double Lead	SS Single Spade	IA "I" Coil AMP Superseal - Integral	
DT Deutsch on Leads DT04-2P	DS Double Spade	ID "I" Coil Deutsch - Integral DT04-2P	
ML Metri-Pack on Leads	HC DIN 43650 (Hirschmann) - (AC&DC)	IJ "I" Coil AMP Jr. Timer - Integral	
PL Packard on Leads	CL Conduit Lead - (AC Only)	IM "I" Coil Metri-Pack - Integral	
WL Weatherpack on Leads	DI Deutsch - Integral DT04-2P		

For Optional Coil Terminations See Coil Section