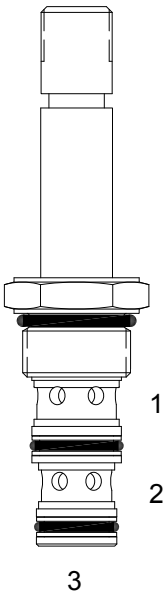


PP-S3A DIRECT ACTING SPOOL, 3 WAY 2 POSITION



DESCRIPTION

8 size, 3/4-16 thread, "Power" series, solenoid operated, 3 way 2 position, spool valve.

OPERATION

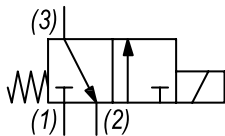
When de-energized the PP-S3A allows flow from (3) to (2) and blocks flow at port (1). When energized the valve allows flow from (1) to (3) and blocks flow at port (2).

**OPERATION OF MANUAL OVERRIDE OPTION:** to override, pull knob out. On the detented version, after pulling knob out twist 180 degrees and release. The valve will remain in that position.

FEATURES

- Hardened parts for long life.
- Efficient wet-armature construction.
- Cartridges are voltage interchangeable.
- Manual override option.
- Industry common cavity.
- Unitized, molded coil design.
- Continuous duty rated solenoid.
- Optional coil voltages and terminations.
- Optional "I" Coil: Weatherproof, Thermal Shock, Immersion Safe.

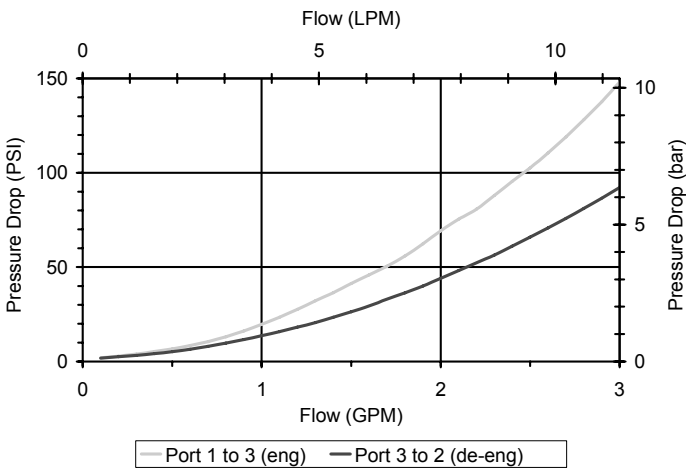
HYDRAULIC SYMBOL



Operational shift limit 3 GPM (11 LPM) from (1) to (3) at 3000 PSI (207 bar) and (3) to (2) with no load. For shifted flow performance consult chart.

PERFORMANCE

Actual Test Data (Cartridge Only)



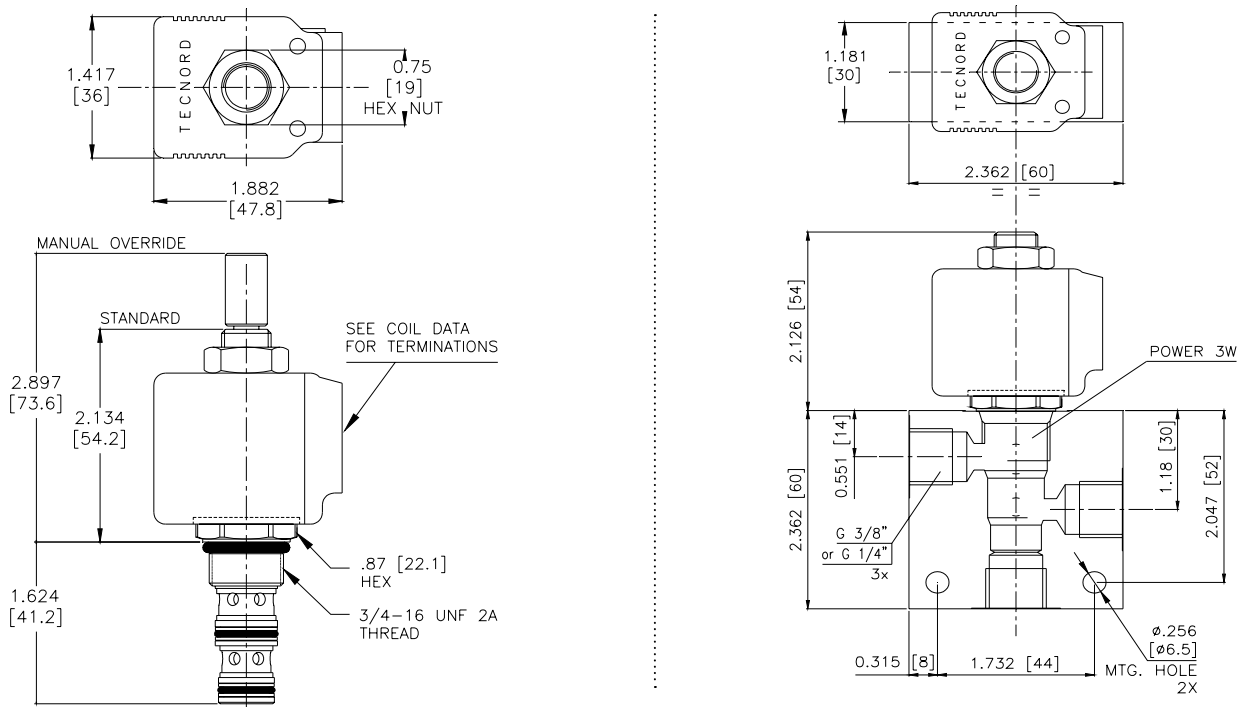
VALVE SPECIFICATIONS

Nominal Flow	3 GPM (11 LPM)
Rated Operating Pressure	3000 PSI (207 bar)
Typical Internal Leakage (150 SSU)	5 cu in/min (82 ml/min)
Viscosity Range	36 to 3000 SSU (3 to 647 cSt)
Filtration	ISO 18/16/13
Media Operating Temp. Range	-40° to 250°F (-40° to 120°C)
Weight	.23 lbs (.10 kg)
Operating Fluid Media	General Purpose Hydraulic Fluid
Cartridge Torque Requirements	25 ft-lbs (34 Nm)
Coil Nut Torque Requirements	4-6 ft-lbs (5.4-8.1 Nm)
Cavity	POWER 3W
Cavity Tools Kit	
(form tool, reamer, tap)	40500024
Seal Kit	21191105

**WARNING:** the specifications/application data shown in our catalogs and data sheets are intended only as a general guide for the product described (herein). Any specific application should not be undertaken without independent study, evaluation, and testing for suitability.

1/1 3/2023

DIMENSIONS



ORDERING INFORMATION

Approximate Coil Weight: .42 lbs (.19 kg)

PP-S3A									
OPTIONS								BODIES	
Buna Standard	00							Blank	Without Body
Viton Standard	V0							N	1/4" BSP Ports
Buna, Override, Detent	0M							N1	3/8" BSP Ports
Viton, Override, Detent	VM							S	#6 SAE Ports
Buna, Screen	A0								
Viton, Screen	W0								
Buna, Override, Non-Detent	B1								
Viton, Override, Non-Detent	V1								
Buna, Screen, Override, Non-Detent	B3							12	12 VDC
Viton, Screen, Override, Non-Detent	V3							24	24 VDC
Buna, Screen, Override, Detent	B4							22	220 VAC without internal rectifier
Viton, Screen, Override, Detent	V4								
<b>Note: use screen only if flow direction is from (1) to (2)</b>									
<b><u>"P" TYPE "J" COIL TERMINATION</u></b>									
JA	"J" Coil AMP Superseal - Integral			JJ	"J" Coil AMP Jr. Time - Integral			JL	"J" Coil Double Lead
JD	"J" Coil Deutsch - Integral DT04-2P							JH	"J" Coil DIN 43650 (Hirschmann)