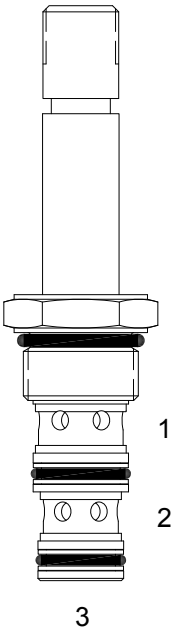


PP-S3D DIRECT ACTING SPOOL, 3 WAY 2 POSITION, SELECTOR



DESCRIPTION

8 size, 3/4-16 thread, "Power" series, solenoid operated, 3 way 2 position, selector spool valve.

OPERATION

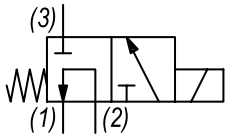
When de-energized the PP-S3D allows flow from (2) to (1) and blocks flow at port (3). When energized the valve allows flow from (2) to (3) and blocks flow at port (1).

OPERATION OF MANUAL OVERRIDE OPTION: to override, pull knob out. On the detented version, after pulling knob out twist 180 degrees and release. The valve will remain in that position.

FEATURES

- Hardened parts for long life.
- Efficient wet-armature construction.
- Cartridges are voltage interchangeable.
- Manual override option.
- Industry common cavity.
- Unitized, molded coil design.
- Continuous duty rated solenoid.
- Optional coil voltages and terminations.
- Optional "I" Coil: Weatherproof, Thermal Shock, Immersion Safe.

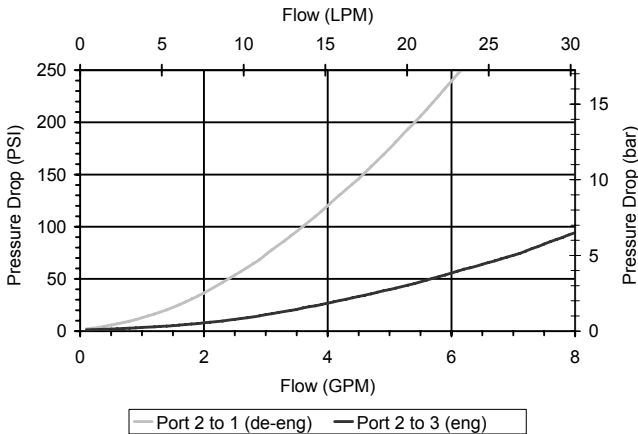
HYDRAULIC SYMBOL



Operational shift limit 3 GPM (11 LPM) from (2) or (3). Consult factory for flow in (1) that exceed 3 GPM. For shifted flow performance consult chart.

PERFORMANCE

Actual Test Data (Cartridge Only)

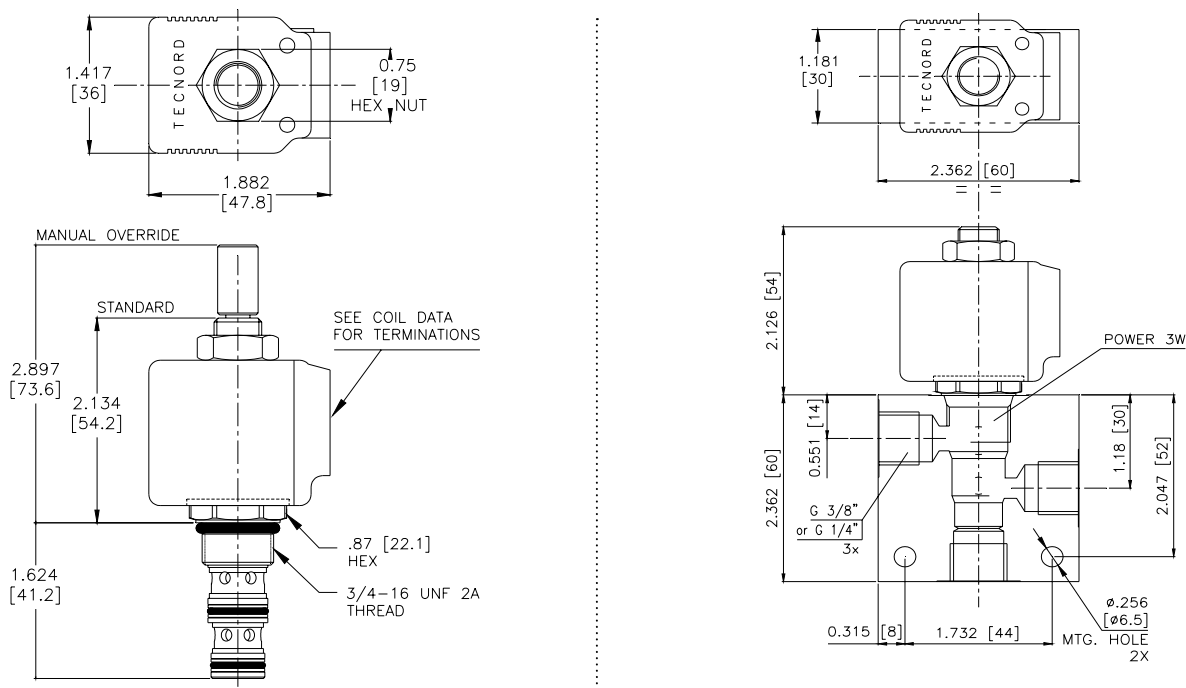


VALVE SPECIFICATIONS

Nominal Flow	3 GPM (11 LPM)
Rated Operating Pressure	3000 PSI (207 bar)
Typical Internal Leakage (150 SSU)	5 cu in/min (82 ml/min)
Viscosity Range	36 to 3000 SSU (3 to 647 cSt)
Filtration	ISO 18/16/13
Media Operating Temp. Range	-40° to 250°F (-40° to 120°C)
Weight	.22 lbs (.10 kg)
Operating Fluid Media	General Purpose Hydraulic Fluid
Cartridge Torque Requirements	25 ft-lbs (34 Nm)
Coil Nut Torque Requirements	4-6 ft-lbs (5.4-8.1 Nm)
Cavity	POWER 3W
Cavity Tools Kit	
(form tool, reamer, tap)	40500024
Seal Kit	21191105

WARNING: the specifications/application data shown in our catalogs and data sheets are intended only as a general guide for the product described (herein). Any specific application should not be undertaken without independent study, evaluation, and testing for suitability.

DIMENSIONS



ORDERING INFORMATION

Approximate Coil Weight: .42 lbs (.19 kg)

PP-S3D - - - -			
OPTIONS		BODIES	
Buna Standard	00	Blank	Without Body
Viton Standard	V0	N	1/4" BSP Ports
Buna, Override, Detent	0M	N1	3/8" BSP Ports
Viton, Override, Detent	VM	S	#6 SAE Ports
Buna, Screen	A0		
Viton, Screen	W0		
Buna, Override, Non-Detent	B1		
Viton, Override, Non-Detent	V1		
Buna, Screen, Override, Non-Detent	B3		
Viton, Screen, Override, Non-Detent	V3		
Buna, Screen, Override, Detent	B4		
Viton, Screen, Override, Detent	V4		
Note: use screen only if flow direction is from (1) to (2)			
"P" TYPE "J" COIL TERMINATION			
JA	"J" Coil AMP Superseal - Integral	JJ	"J" Coil AMP Jr. Time - Integral
JD	"J" Coil Deutsch - Integral DT04-2P	JL	"J" Coil Double Lead
		JH	"J" Coil DIN 43650 (Hirschmann)

W 3/1 2023

WARNING: the specifications/application data shown in our catalogs and data sheets are intended only as a general guide for the product described (herein). Any specific application should not be undertaken without independent study, evaluation, and testing for suitability.