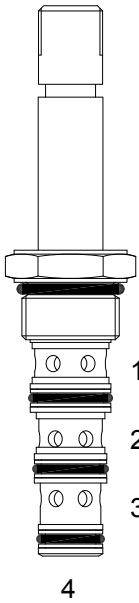


PQ-S4D DIRECT ACTING SPOOL, 4 WAY 2 POSITION, CRISS CROSS



DESCRIPTION

8 size, 3/4-16 thread, "Power" series, solenoid operated, 4 way 2 position, criss cross, bottom flow spool valve.

OPERATION

When de-energized the PQ-S4D allows flow from (3) to (2), and from (4) to (1). When energized the valve allows flow from (1) to (2) and from (4) to (3).

**OPERATION OF MANUAL OVERRIDE OPTION:** to override, pull knob out. On the detented version, after pulling knob out twist 180 degrees and release. The valve will remain in that position.

FEATURES

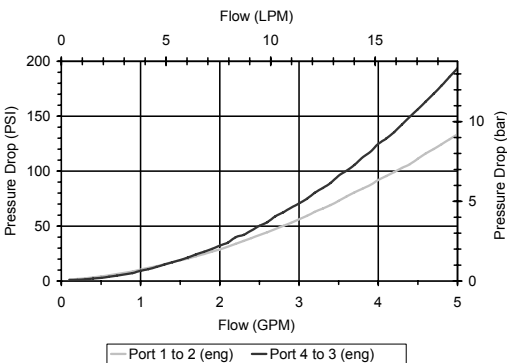
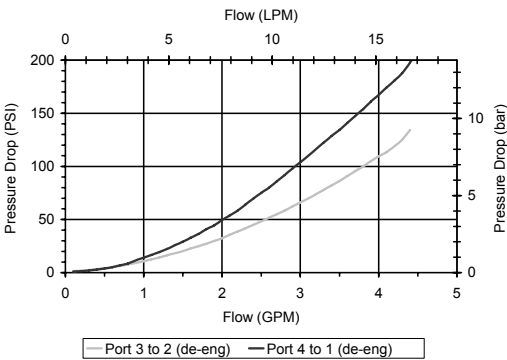
- Hardened parts for long life.
- Efficient wet-armature construction.
- Cartridges are voltage interchangeable.
- Manual override option.
- Industry common cavity.
- Unitized, molded coil design.
- Continuous duty rated solenoid.
- Optional coil voltages and terminations.
- Optional "I" Coil: Weatherproof, Thermal Shock, Immersion Safe.



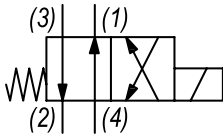
Modes of shift operation to 3 GPM,  
Consult Factory.

PERFORMANCE

Actual Test Data (Cartridge Only)



HYDRAULIC SYMBOL



VALVE SPECIFICATIONS

|                                    |                                  |
|------------------------------------|----------------------------------|
| Nominal Flow                       | 2.5 GPM (9.5 LPM)                |
| Rated Operating Pressure           | 3000 PSI (207 bar)               |
| Typical Internal Leakage (150 SSU) | 5 cu in/min (82 ml/min) per path |
| Viscosity Range                    | 36 to 3000 SSU (3 to 647 cSt)    |
| Filtration                         | ISO 18/16/13                     |
| Media Operating Temp. Range        | -40° to 250°F (-40° to 120°C)    |
| Weight                             | .24 lbs (.11 kg)                 |
| Operating Fluid Media              | General Purpose Hydraulic Fluid  |
| Cartridge Torque Requirements      | 25 ft-lbs (34 Nm)                |
| Coil Nut Torque Requirements       | 4-6 ft-lbs (5.4-8.1 Nm)          |
| Cavity                             | POWER 4W                         |
| Cavity Tools Kit                   |                                  |
| (form tool, reamer, tap)           | 40500029                         |
| Seal Kit                           | 21191108                         |

**WARNING:** the specifications/application data shown in our catalogs and data sheets are intended only as a general guide for the product described (herein). Any specific application should not be undertaken without independent study, evaluation, and testing for suitability.

1/ 3/2023

