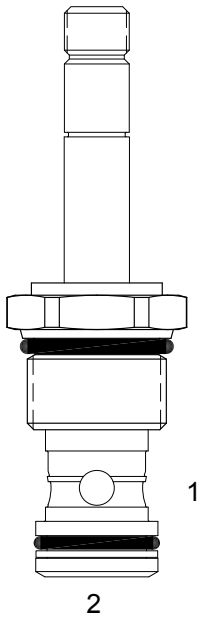


TT-S2B PILOT OPERATED POPPET, 2 WAY NORMALLY CLOSED



DESCRIPTION

12 size, 1 1/16-12 thread, "Tecnord" series, solenoid operated, 2 way normally closed, pilot operated poppet valve with reverse flow energized and de-energized.

OPERATION

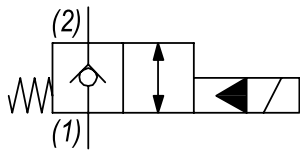
When de-energized the TT-S2B blocks flow from (1) to (2) and allows reverse flow from (2) to (1). When energized the valve allows flow from (1) to (2) and from (2) to (1).

OPERATION OF MANUAL OVERRIDE OPTION: to override, pull knob out. On the detented version, after pulling knob out twist 180 degrees and release. The valve will remain in that position.

FEATURES

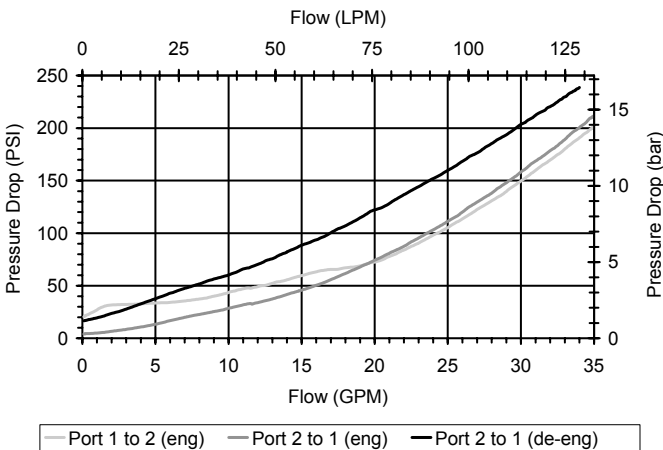
- Hardened parts for long life.
- Efficient wet-armature construction.
- Cartridges are voltage interchangeable.
- Manual override option.
- Industry common cavity.
- Unitized, molded coil design.
- Continuous duty rated solenoid.
- Optional coil voltages and terminations.
- Optional "I" Coil: Weatherproof, Thermal Shock, Immersion Safe.

HYDRAULIC SYMBOL



PERFORMANCE

Actual Test Data (Cartridge Only)



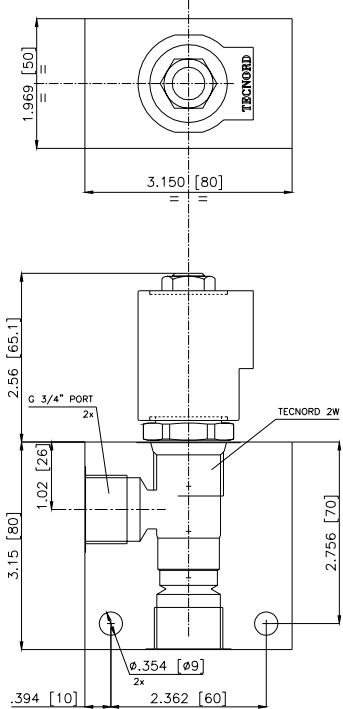
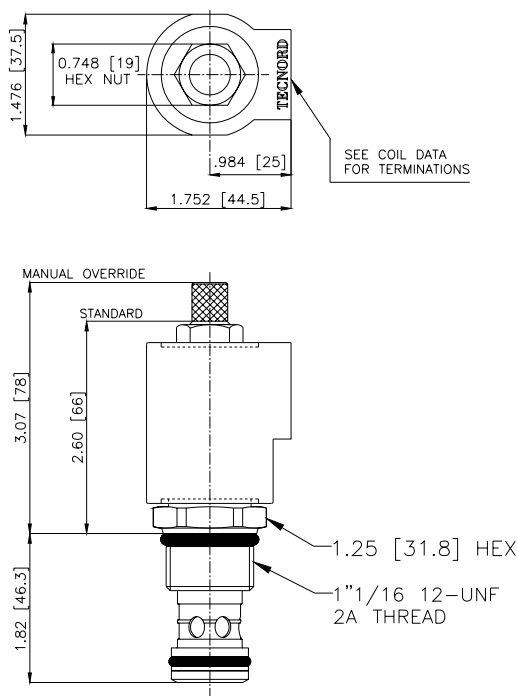
VALVE SPECIFICATIONS

Nominal Flow	25 GPM (95 LPM)
Rated Operating Pressure	3000 PSI (207 bar)
Typical Internal Leakage (150 SSU)	0-5 drops/min
Viscosity Range	36 to 3000 SSU (3 to 647 cSt)
Filtration	ISO 18/16/13
Media Operating Temp. Range	-40° to 250°F (-40° to 120°C)
Weight	.49 lbs (.22 kg)
Operating Fluid Media	General Purpose Hydraulic Fluid
Cartridge Torque Requirements	50 ft-lbs (67.8 Nm)
Coil Nut Torque Requirements	4-6 ft-lbs (5.4-8.1 Nm)
Cavity	TECNORD 2W
Cavity Tools Kit	
(form tool, reamer, tap)	40500032
Seal Kit	21191300

WARNING: the specifications/application data shown in our catalogs and data sheets are intended only as a general guide for the product described (herein). Any specific application should not be undertaken without independent study, evaluation, and testing for suitability.

1/ 3/2023

DIMENSIONS



ORDERING INFORMATION

Approximate Coil Weight: .56 lbs (.25 kg)

TT-S2B							
OPTIONS				BODIES			
Buna Standard	00			Blank	Without Body		
Viton Standard	V0			N	3/4" BSP Ports		
Buna, Override, Detent	0M			S	#12 SAE Ports		
Viton, Override, Detent	VM						
Buna, Screen	A0						
Viton, Screen	W0						
Buna, Override, Non-Detent	B1						
Viton, Override, Non-Detent	V1						
Buna, Screen, Override, Non-Detent	B3						
Viton, Screen, Override, Non-Detent	V3						
Buna, Screen, Override, Detent	B4						
Viton, Screen, Override, Detent	V4						
Note: use screen only if flow direction is from (1) to (2)							
"V" COIL TERMINATION (All DC Except as Noted)				VOLTAGE (other voltages available on request)			
				12		12 VDC	
				24		24 VDC	
				22		220 VAC without internal rectifier	
DL Double Lead (several types of termination can be attached on leads on request)		HC DIN 43650 (Hirschmann) - (AC&DC)		DIA		IMMERSION PROOF "D" TYPE	
		DI Deutsch - Integral DT04-2P		DID		"I" Coil AMP Superseal - Integral	
				DIJ		"I" Coil AMP Jr. Timer - Integral	
				DIM		"I" Coil Metri-Pack - Integral	