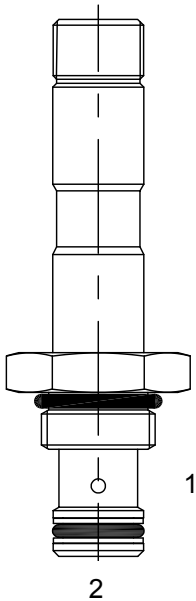


UA-S2E POPPET, 2 WAY, NORMALLY CLOSED, BIDIRECTIONAL

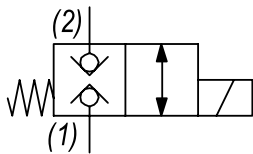


DESCRIPTION
7 size, 5/8-18 thread, "Mini" series, solenoid operated, 2 way normally closed, bidirectional poppet valve.

OPERATION
When de-energized the UA-S2E blocks flow from (1) to (2) and (2) to (1). When energized, the valve allows flow from (1) to (2) and (2) to (1).

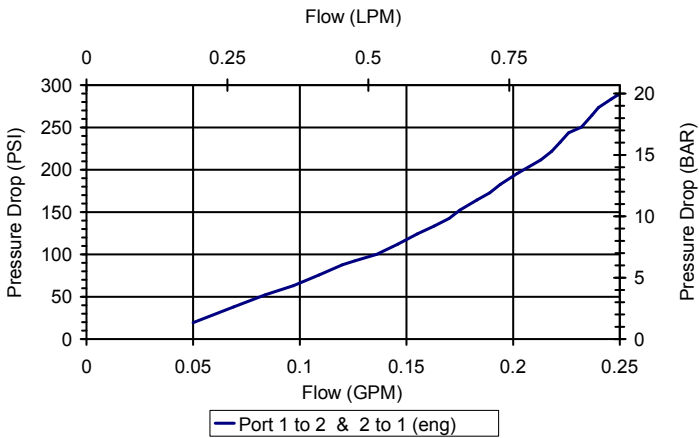
- FEATURES**
- Hardened parts for long life.
 - Efficient wet-armature construction.
 - Cartridges are voltage interchangeable.
 - Industry common cavity.
 - Unitized, molded coil design.
 - Continuous duty rated solenoid.
 - Optional coil voltages and terminations.

HYDRAULIC SYMBOL



PERFORMANCE

Actual Test Data (Cartridge Only)

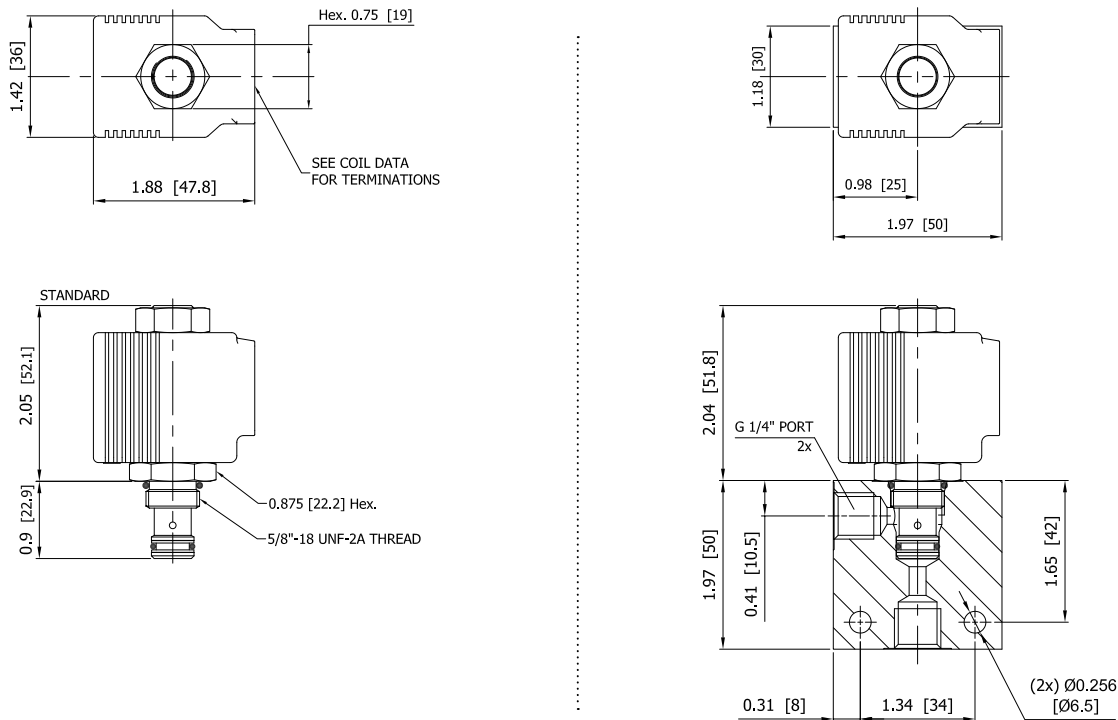


VALVE SPECIFICATIONS

Nominal Flow	0.20 GPM (0.76 LPM)
Rated Operating Pressure	4000 PSI (276 bar)
Typical Internal Leakage (150 SSU)	0-10 drops/min
Viscosity Range	36 to 3000 SSU (3 to 647 cSt)
Filtration	ISO 18/16/13
Media Operating Temp. Range	-40° to 250°F (-40° to 120°C)
Weight	.18 lbs (.08 kg)
Operating Fluid Media	General Purpose Hydraulic Fluid
Cartridge Torque Requirements	15 ft-lbs (20.3 Nm)
Coil Nut Torque Requirements	4-6 ft-lbs (5.4-8.1 Nm)
Cavity	MINI 2W
Cavity Form Tool (Finishing)	40500003
Seal Kit	21191003

WARNING: the specifications/application data shown in our catalogs and data sheets are intended only as a general guide for the product described (herein). Any specific application should not be undertaken without independent study, evaluation, and testing for suitability.

DIMENSIONS



ORDERING INFORMATION

Approximate Coil Weight: .30 lbs (.14 kg)

UA-S2E					
<u>OPTIONS</u>				<u>BODIES</u>	
Buna Standard	00			Blank	Without Body
Viton Standard	V0			N	1/4" BSP Ports
Buna, Screen	A0			S	#6 SAE Ports
Viton, Screen	W0				
Note: use screen only if flow direction is from (1) to (2)					
				<u>VOLTAGE</u> (other voltages available on request)	
				12	12 VDC
				24	24 VDC
				26	220 VAC with molded full wave rectifier
<u>"P" TYPE "J" COIL TERMINATION</u>					
JA	"J" Coil AMP Superseal - Integral		JJ	"J" Coil AMP Jr. Time - Integral	
JD	"J" Coil Deutsch - Integral DT04-2P		JL	"J" Coil Double Lead	
			JH	"J" Coil DIN 43650 (Hirschmann)	