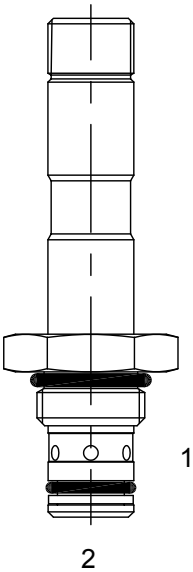


UA-S2F PILOT OPERATED POPPET, 2 WAY, NORMALLY CLOSED – SOFT SEAT



DESCRIPTION

7 size, 5/8-18 thread, “Mini” series, solenoid operated, 2 way normally closed, pilot operated soft seat poppet valve with reverse flow de-energized.

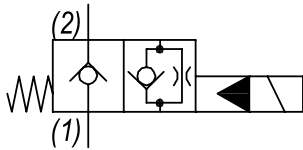
OPERATION

When de-energized the UA-S2F blocks flow from (1) to (2) and allows free reverse flow from (2) to (1). When energized, the valve allows flow from (1) to (2) and restricts flow from (2) to (1).

FEATURES

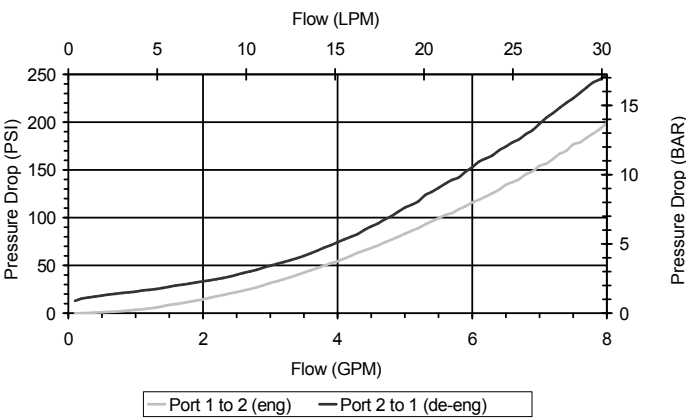
- Soft seat for ultra low leakage.
- Efficient wet-armature construction.
- Cartridges are voltage interchangeable.
- Industry common cavity.
- Unitized, molded coil design.
- Continuous duty rated solenoid.
- Optional coil voltages and terminations.

HYDRAULIC SYMBOL



PERFORMANCE

Actual Test Data (Cartridge Only)



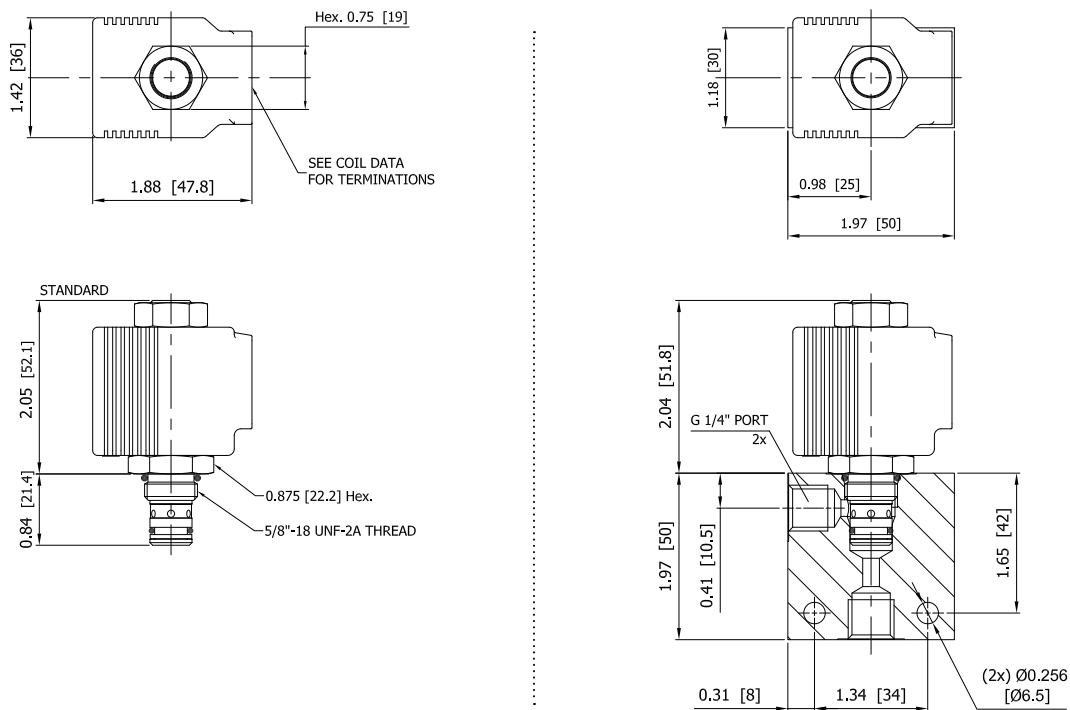
VALVE SPECIFICATIONS

Nominal Flow	4 GPM (15 LPM)
Rated Operating Pressure	3000 PSI (207 bar)
Typical Internal Leakage (150 SSU)	Negligible
Viscosity Range	36 to 3000 SSU (3 to 647 cSt)
Filtration	ISO 18/16/13
Media Operating Temp. Range	32° to 160°F (0° to 70°C)
Weight	.12 lbs (.05 kg)
Operating Fluid Media	General Purpose Hydraulic Fluid
Cartridge Torque Requirements	15 ft-lbs (20.3 Nm)
Coil Nut Torque Requirements	4-6 ft-lbs (5.4-8.1 Nm)
Cavity	MINI 2W
Cavity Form Tool (Finishing)	40500003
Seal Kit	21191000

**WARNING:** the specifications/application data shown in our catalogs and data sheets are intended only as a general guide for the product described (herein). Any specific application should not be undertaken without independent study, evaluation, and testing for suitability.

11/3/2023

DIMENSIONS



ORDERING INFORMATION

Approximate Coil Weight: .30 lbs (.14 kg)

UA-S2F - - - -			
<b>OPTIONS</b>		<b>BODIES</b>	
Buna Standard	00	Blank	Without Body
Viton Standard	V0	N	1/4" BSP Ports
Buna, Screen	A0	S	#6 SAE Ports
Viton, Screen	W0		
<b>Note: use screen only if flow direction is from (1) to (2)</b>		<b>VOLTAGE</b> (other voltages available on request)	
		12	12 VDC
		24	24 VDC
		26	220 VAC with molded full wave rectifier
<b>"P" TYPE "J" COIL TERMINATION</b>			
JA	"J" Coil AMP Superseal - Integral	JJ	"J" Coil AMP Jr. Time - Integral
JD	"J" Coil Deutsch - Integral DT04-2P	JL	"J" Coil Double Lead
		JH	"J" Coil DIN 43650 (Hirschmann)