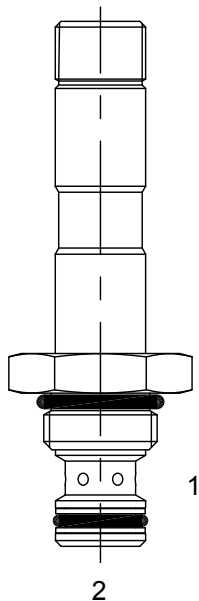


**UA-S2H** DIRECT ACTING SPOOL, 2 WAY NORMALLY OPEN



**DESCRIPTION**

7 size, 5/8-18 thread, "Mini" series, solenoid operated, 2 way normally open, spool valve.

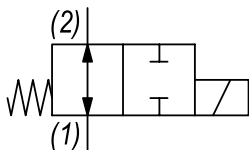
**OPERATION**

When de-energized the UA-S2H allows flow from (1) to (2) and (2) to (1). When energized, the valve blocks flow from (1) to (2) and (2) to (1).

**FEATURES**

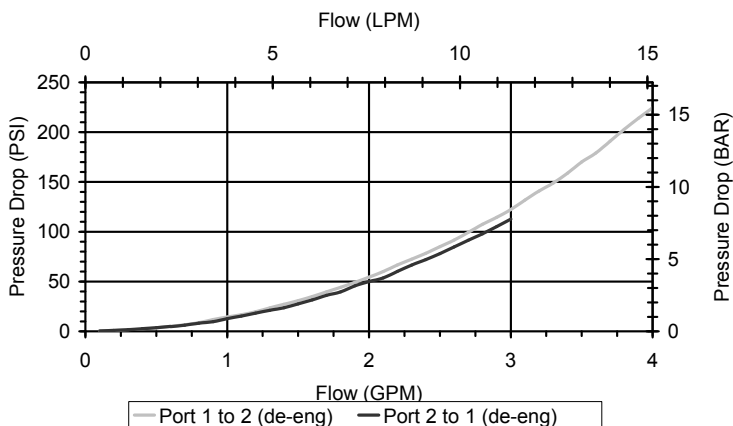
- Hardened parts for long life.
- Efficient wet-armature construction.
- Cartridges are voltage interchangeable.
- Industry common cavity.
- Unitized, molded coil design.
- Continuous duty rated solenoid.
- Optional coil voltages and terminations.

**HYDRAULIC SYMBOL**



**PERFORMANCE**

Actual Test Data (Cartridge Only)



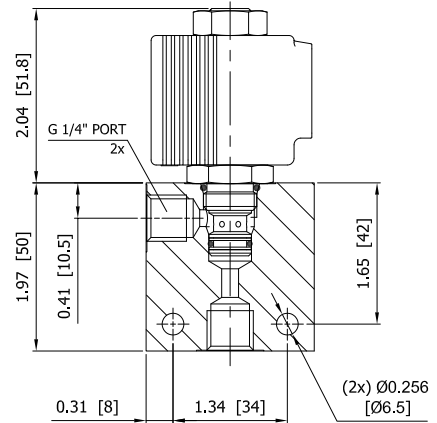
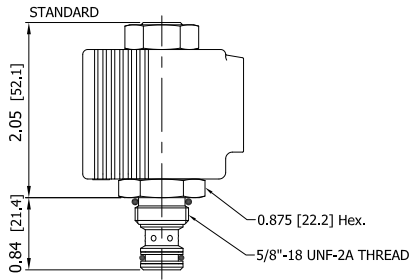
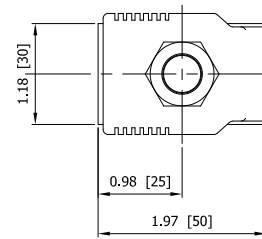
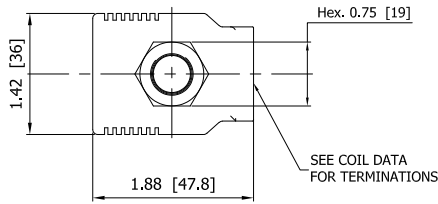
**VALVE SPECIFICATIONS**

Nominal Flow	2 GPM (8 LPM) from (1) to (2) 1 GPM (4 LPM) from (2) to (1)
Rated Operating Pressure	4000 PSI (276 bar)
Typical Internal Leakage (150 SSU)	8 cu in/min (131 ml/min)
Viscosity Range	36 to 3000 SSU (3 to 647 cSt)
Filtration	ISO 18/16/13
Media Operating Temp. Range	-40° to 250°F (-40° to 120°C)
Weight	.12 lbs (.05 kg)
Operating Fluid Media	General Purpose Hydraulic Fluid
Cartridge Torque Requirements	15 ft-lbs (20.3 Nm)
Coil Nut Torque Requirements	4-6 ft-lbs (5.4-8.1 Nm)
Cavity	MINI 2W
Cavity Form Tool (Finishing)	40500003
Seal Kit	21191002

**WARNING:** the specifications/application data shown in our catalogs and data sheets are intended only as a general guide for the product described (herein). Any specific application should not be undertaken without independent study, evaluation, and testing for suitability.

# SOLENOID OPERATED DIRECTIONAL CONTROLS

## DIMENSIONS



## ORDERING INFORMATION

Approximate Coil Weight: .30 lbs (.14 kg)

UA-S2H - - - -

### OPTIONS

Buna Standard **00**  
 Viton Standard **V0**  
 Buna, Screen **A0**  
 Viton, Screen **W0**

Note: use screen only if flow direction is from (1) to (2)

### BODIES

Blank Without Body  
**N** 1/4" BSP Ports  
**S** #6 SAE Ports

### VOLTAGE (other voltages available on request)

**12** 12 VDC  
**24** 24 VDC  
**26** 220 VAC with molded full wave rectifier

### "P" TYPE "J" COIL TERMINATION

**JA** "J" Coil AMP Superseal - Integral  
**JD** "J" Coil Deutsch - Integral DT04-2P

**JJ** "J" Coil AMP Jr. Time - Integral

**JL** "J" Coil Double Lead  
**JH** "J" Coil DIN 43650 (Hirschmann)