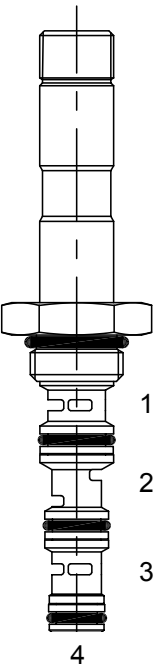


UD-S4B DIRECT ACTING SPOOL, 4 WAY 2 POSITION, CLOSED CENTER



DESCRIPTION

7 size, 5/8-18 thread, "Mini" series, solenoid operated, 4 way 2 position, closed center spool valve.

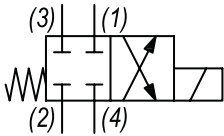
OPERATION

When de-energized the UD-S4B blocks flow at all ports. When energized, the valve allows flow from (2) to (1) and (3) to (4).

FEATURES

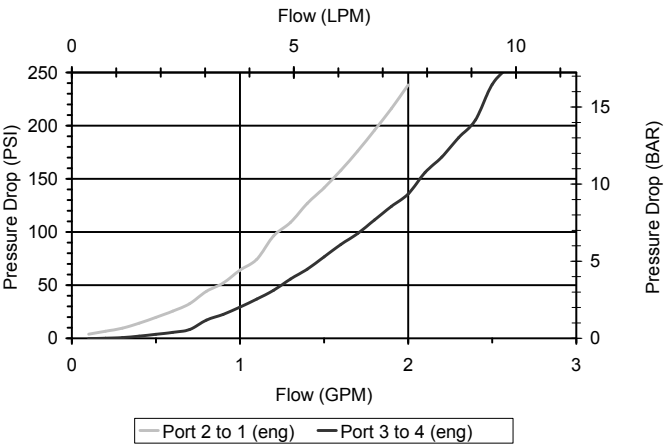
- Hardened parts for long life.
- Efficient wet-armature construction.
- Cartridges are voltage interchangeable.
- Industry common cavity.
- Unitized, molded coil design.
- Continuous duty rated solenoid.
- Optional coil voltages and terminations.

HYDRAULIC SYMBOL



PERFORMANCE

Actual Test Data (Cartridge Only)

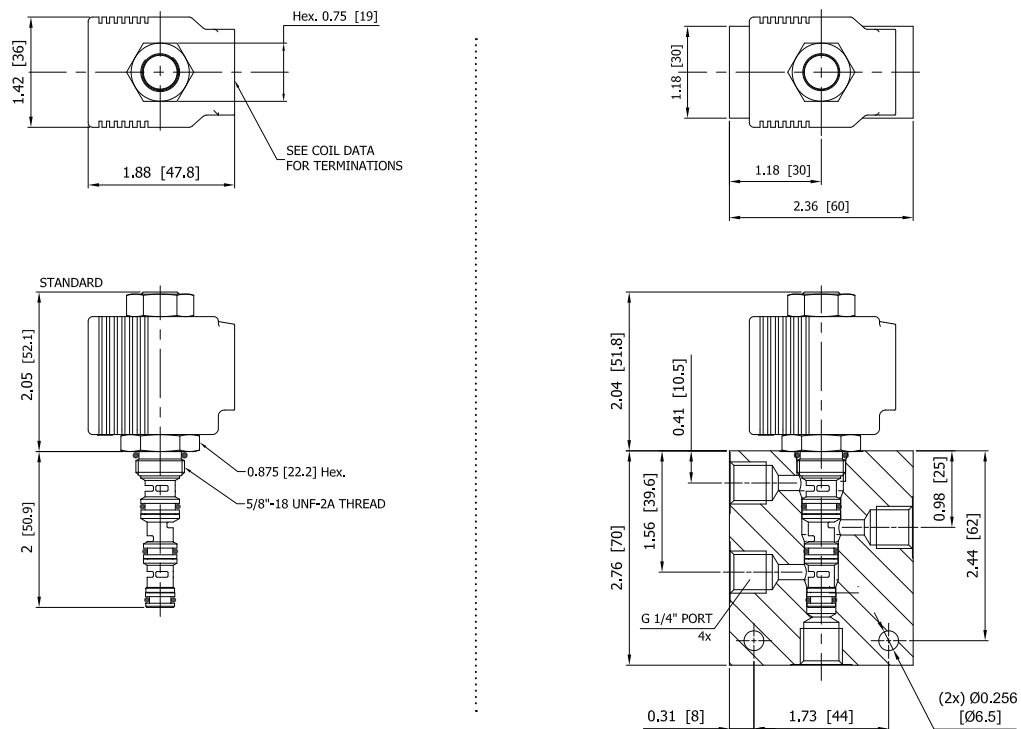


VALVE SPECIFICATIONS

Nominal Flow	1.5 GPM (6 LPM)
Rated Operating Pressure	4000 PSI (276 bar)
Typical Internal Leakage (150 SSU)	8 cu in/min (131 ml/min)
Viscosity Range	36 to 3000 SSU (3 to 647 cSt)
Filtration	ISO 18/16/13
Media Operating Temp. Range	-40° to 250°F (-40° to 120°C)
Weight	.15 lbs (.07 kg)
Operating Fluid Media	General Purpose Hydraulic Fluid
Cartridge Torque Requirements	15 ft-lbs (20.3 Nm)
Coil Nut Torque Requirements	4-6 ft-lbs (5.4-8.1 Nm)
Cavity	MINI 4W
Cavity Form Tool (Finishing)	40500006
Seal Kit	21191008

**WARNING:** the specifications/application data shown in our catalogs and data sheets are intended only as a general guide for the product described (herein). Any specific application should not be undertaken without independent study, evaluation, and testing for suitability.

DIMENSIONS



ORDERING INFORMATION

Approximate Coil Weight: .30 lbs (.14 kg)

UD-S4B - - - -			
<b>OPTIONS</b>		<b>BODIES</b>	
Buna Standard	00	Blank	Without Body
Viton Standard	V0	N	1/4" BSP Ports
Buna, Screen	A0	S	#6 SAE Ports
Viton, Screen	W0		
<b>Note: use screen only if flow direction is from (1) to (2)</b>		<b>VOLTAGE</b> (other voltages available on request)	
		12	12 VDC
		24	24 VDC
		26	220 VAC with molded full wave rectifier
<b>"P" TYPE "J" COIL TERMINATION</b>			
JA	"J" Coil AMP Superseal - Integral	JJ	"J" Coil AMP Jr. Time - Integral
JD	"J" Coil Deutsch - Integral DT04-2P	JL	"J" Coil Double Lead
		JH	"J" Coil DIN 43650 (Hirschmann)